













APPLICATION	PARTS NO.	PICTURE
DEF Pump/Urea pump Denoxtronic 2.2 24V  <b>Suitable for</b> Volvo	<b>To Replace</b> 22851845	
DEF Pump/Urea pump Denoxtronic 2.2 12V  <b>Suitable for</b> Volvo	<b>To Replace</b> 21577507	
DEF Pump/Urea pump Denoxtronic 2.2  <b>Suitable for</b> Volvo	<b>To Replace</b> 21332695 21266765 21576178 21266765	
DEF Pump/Urea pump Denoxtronic 2.2  <b>Suitable for</b> Volvo	<b>To Replace</b> 21266765	
DEF Pump/Urea pump Denoxtronic 2.2 12V  <b>Suitable for</b> PACCAR	<b>To Replace</b> 2050811	
DEF Pump/Urea pump Denoxtronic 2.2 12V  <b>Suitable for</b> MACK	<b>To Replace</b> 21577511 85003864	




APPLICATION	PARTS NO.	PICTURE
DEF Pump/Urea pump Denoxtronic 2.2 12v  <b>Suitable for</b> Kenworth	<b>To Replace</b> 2871879-RX, 2871879-RXA, 2871879, 2871879RX, 2871879RXA	
DEF Pump/Urea pump Denoxtronic 2.2 12V  <b>Suitable for</b> Dodge Ram	<b>To Replace</b> 0444042092 0444042093 098644D120 098644D122	
DEF Pump/Urea pump Denoxtronic 2.2 12V  <b>Suitable for</b> cummins	<b>To Replace</b> 8-98268811-0 5500	
DEF Pump/Urea pump Denoxtronic 2.2 12V  <b>Suitable for</b> cummins	<b>To Replace</b> 4387304 4387304RX	
DEF Pump/Urea pump Denoxtronic 2.2 12V  <b>Suitable for</b> cummins	<b>To Replace</b> 4387657 4387657RX	
DEF Pump/Urea pump Denoxtronic 2.2 12V  <b>Suitable for</b> cummins	<b>To Replace</b> A028Y792	

APPLICATION	PARTS NO.	PICTURE
DEF Pump/Urea pump Denoxtronic 2.2 12V  <b>Suitable for</b> cummins	<b>To Replace</b> 2871879	
DEF Pump/Urea pump Denoxtronic 2.2 12V  <b>Suitable for</b> Komatsu	<b>To Replace</b> 6540-71-2510	
DEF Pump/Urea pump  <b>Suitable for</b> DAF	<b>To Replace</b> 5273338	
DEF Pump/Urea pump  <b>Suitable for</b> DAF	<b>To Replace</b> 1705244	
DEF Pump/Urea pump  <b>Suitable for</b> DAF	<b>To Replace</b> 1409391	
DEF Pump/Urea pump  <b>Suitable for</b> DAF	<b>To Replace</b> 4931694	

APPLICATION	PARTS NO.	PICTURE
DEF Pump/Urea pump  <b>Suitable for</b> Mercedes Benz	<b>To Replace</b> A0001400378	
DEF Pump/Urea pump  <b>Suitable for</b> Mercedes Benz	<b>To Replace</b> A0001400478	
DEF Pump/Urea pump  <b>Suitable for</b> Mercedes Benz	<b>To Replace</b> A0001400578	
DEF Pump/Urea pump Denoxtronic 2.2  <b>Suitable for</b> John Deere	<b>To Replace</b> Re553796	
DEF Pump/Urea pump  <b>Suitable for</b> ORD/cummins	<b>To Replace</b> CC45.5H298.AB/M6YYC 5273337	
DEF Pump/Urea pump  <b>Suitable for</b> Cummins/Ecofit	<b>To Replace</b> 5303018	

APPLICATION	PARTS NO.	PICTURE
DEF Pump/Urea pump  <b>Suitable for</b> Cummins/Ecofit	<b>To Replace</b> 4328805	
DEF Pump/Urea pump  <b>Suitable for</b> Cummins/Ecofit	<b>To Replace</b> 5303585	
DEF Pump/Urea pump /12V  <b>Suitable for</b> ISUZU	<b>To Replace</b> 8982688110 0444042104	
DEF Pump/Urea pump /24V  <b>Suitable for</b> HINO	<b>To Replace</b> S17HO-E0020	
DEF Pump/Urea pump  <b>Suitable for</b> MAN/VW	<b>To Replace</b> 212.131.113.8	
DEF Pump/Urea pump  <b>Suitable for</b> MAN	<b>To Replace</b> 2P0.131.113	

APPLICATION	PARTS NO.	PICTURE
Suitable for Mercedes	<b>To Replace</b> 0280158707 0280158714 0280158701 ISX2888173	
Suitable for Cummins	<b>To Replace</b> A045U724 5303018/42.0019 6.33190/0445120019 4047755625856 0445120084	
Suitable for Mercedes	<b>To Replace</b> 21332695 21266765 21576178 21266765	
Suitable for Scania	<b>To Replace</b> 30432780 444011015 2001791	
Suitable for Mercedes	<b>To Replace</b> 044403016/A030F171 0444043015-LW A030P707/0444043015 2888173/A030P707 2888112/288817 A444606318/0444043 0444043009	
	<b>To Replace</b> 0444023019 0444028008 0444023048 0444023 /0444023053 21574984	

APPLICATION	PARTS NO.	PICTURE
<p><b>Suitable for</b> Mercedes</p>	<p><b>To Replace</b>                      0 444 021 021                      3C0131113C                      3C0131113D                      95811141330                      A0004901013                      0444021031                      A0004900713                      A4704905900</p>	
<p><b>Suitable for</b></p>	<p><b>To Replace</b>                      0 444 021 024                      A164 490 05 13                      A1644900513                      MA1644900513                      A1644900213                      A1644900413                      07174848</p>	
<p><b>Suitable for</b></p>	<p><b>To Replace</b>                      0 444 021 04 52                      Lr062819                      FPLA-189E3-AC                      FX23-189E3-AA                      FX23-189E3-AB                      LR134710                      LR071703</p>	

## NOx Sensor List

REFERENCE	OE –Ref. No.	Descriptions	24V/12V
BM701	7587130 – 5WK9 6621K, 7580517, 7587127	NOx sensor for BMW	12V
BM702	7587129 – 5WK9 6610L, 7587128, 7580518	NOx sensor for BMW	12V
BM703	7587129 – 5WK9 6610K	NOx sensor for BMW	12V
BM704	7587130 – 5WK9 6621F	NOx sensor for BMW	12V
BM705	7587130 – 5WK9 6621H	NOx sensor for BMW	12V
BM706	7587130 – 5WK9 6621J	NOx sensor for BMW	12V
BM707	7587130 – 5WK9 6621G	NOx sensor for BMW	12V
BM708	8576471 – 5WK9 6699B	NOx sensor for BMW	12V
BM709	8576469 – 5WK9 6697B	NOx sensor for BMW	12V
BM710	8751666 – 5WK9 6699	NOx sensor for BMW	12V
BM711	8511664 – 5WK9 6697	NOx sensor for BMW	12V
BM712			
BM713			
BM714			
CU801	2894940 – 5WK9 6675A	NOx sensor for CUMMINS / DAF	24V
CU802	4326863 – 5WK9 6765A	NOx sensor for CUMMINS	24V
CU803	5WK9 6756 / A2C81234400-03	NOx sensor for YUCHAI	24V
CU804	5WK9 7103 / A2C93843000-01	NOx sensor for YUCHAI	24V
CU805	5WK9 7100 / A2C86399600-01	NOx sensor for CUMMINS / DAF	24V
CU806	4326868 – 5WK9 6752C, 1953530, 1928760	NOx sensor for CUMMINS	24V
CU807	4326472 – 5WK9 6750A	NOx sensor for CUMMINS	24V
CU808	4326862 – 5WK9 6751C	NOx sensor for CUMMINS	24V
CU809			
CU810			
CU811			
CU812			
CU813			
CU814			
CU815			

All NOx sensors are equipped with original new NGK probe.

[www.0086PARTS.com](http://www.0086PARTS.com)



## NOx Sensor List

REFERENCE	OE –Ref. No.	Descriptions	24V/12V
CU701	4326869 – 5WK9 6753B, A2C95993800-01	NOx sensor for CUMMINS	12V
CU702	4326870 – 5WK9 6740B, A2C95990700-01	NOx sensor for CUMMINS	12V
CU703	4326874 – 5WK9 6741A, A2C89787500-02	NOx sensor for CUMMINS	12V
CU704	4326872 – 5WK9 6749B, A2C95992000-01	NOx sensor for CUMMINS	12V
CU705	2872944 – 5WK9 6740, 287294400, 3687930	NOx sensor for CUMMINS	12V
CU706	2872948 – 5WK9 6742, A2C34947100-01	NOx sensor for CUMMINS	12V
CU707	2872942 – 5WK9 6749, A2C93947200-01	NOx sensor for CUMMINS	12V
CU708	2872946 – 5WK9 6741, A2C34947000-01	NOx sensor for CUMMINS	12V
CU709	2872947 – 5WK9 6753, A2C34968000-01	NOx sensor for CUMMINS	12V
CU710			
CU711			
CU712			
CU701			
CU713			
CU714			
CU715			
DA801	2011649 – 5WK9 6628C, 1836060, 1793379	NOx sensor for DAF, Upstream	24V
DA802	2011650 – 5WK9 6626C, 2011648, 1836061 1836059, 1793380, 1793378, 1746581	NOx sensor for DAF, Downstream	24V
DA803	2894940 – 5WK9 6675A, 1705572, 1705520	NOx sensor for DAF	24V
DA804	2006245 – 5WK9 6661D, 1973527, 1904788 1932603, 1936258	NOx sensor for DAF	24V
DA805	1953530, 4326868 – 5WK9 6752C, 1928760	NOx sensor for DAF, CUMMINS	24V
DA806			
DA807			
DA808			
DA809			
DA810			
DA811			

All NOx sensors are equipped with original new NGK probe.

www.0086PARTS.com

## NOx Sensor List

REFERENCE	OE -Ref. No.	Descriptions	24V/12V
IV801	5801754015 – 5WK9 6615F, 5801424181	NOx sensor for IVECO	24V
	5801273980, 42558451, 41271167, 8046503		
IV802	5801754016 – 5WK9 6733B, 5801443021	NOx sensor for IVECO	24V
IV803	5801754014 – 5WK9 6775A, 5801627703	NOx sensor for IVECO, Euro 6	24V
IV804	5801777219 – 5WK9 6720A, 5801429373	NOx sensor for IVECO, Euro 6	24V
	5801627702 – 5WK9 6720		
IV805			
IV806			
IV807			
IV808			
MA801	51154080015 – 5WK9 6618D/ 6618C,	NOx sensor for MAN	24V
	51154080009, 81154080000, 81154080004		
MA802	51154080017 – 5WK9 6722B, 51154080008	NOx sensor for MAN, Euro 6	24V
MA803	51154080019 – 5WK9 6790B, 51154080012	NOx sensor for MAN, Euro 6	24V
MA804	51154080018 – 5WK9 6783B, 51154080011	NOx sensor for MAN, Euro 6	24V

All NOx sensors are equipped with original new NGK probe.

www.0086PARTS.com

## NOx Sensor List

REFERENCE	OE -Ref. No.	Descriptions	24V/12V
NS-MB801	A0091533628 – 5WK9 6616F, A006153728	NOx sensor for Mercedes-Benz	24V
NS-MB802	A0091533628 – 5WK9 6616D	NOx sensor for Mercedes-Benz	24V
NS-MB803	A0101539328, A2C39120900-042C	Mercedes-Benz, Euro 6	24V
	A0081539828 – 5WK9 6642A/ 6642B/ 6642		
NS-MB804	A0101539528 – 5WK9 6653C, A0091530028	Mercedes-Benz, Euro 6	24V
NS-MB805	A0101539428, A2C39121100-052C	Mercedes-Benz, Euro 6	24V
	A0081539928 – 5WK9 6652A/ 6652B		
NS-MB806	A0101539628 – 5WK9 6659C, A0091530128	Mercedes-Benz, Euro 6	24V
NS-MB807			
NS-MB808			
NS-MB809			
NS-MB810			
NS-MB701	A0009053503 – 5WK9 6682C/ 6682D	NOx sensor for Mercedes-Benz	12V
	A0009052800, 0009057000, 0009055300		
NS-MB702	A0009053603 – 5WK9 6683D, A0009057100	NOx sensor for Mercedes-Benz	12V
	A0009052800, 0009052900, 0065420918		
NS-MB703	A0101532328 – 5WK9 7339A	NOx sensor for MB, DETROIT	12V
NS-MB704	A0101532228 – 5WK9 7338A	NOx sensor for MB, DETROIT	12V
NS-MB705	A0009053403 – 5WK9 6681D / 6681C	NOx sensor for MB	12V
NS-MB706	A0009059803 – 5WK9 6683E	NOx sensor for MB	12V

All NOx sensors are equipped with original new NGK probe.

www.0086PARTS.com

## NOx Sensor List

REFERENCE	OE –Ref. No.	Descriptions	24V/12V
RV801	7422827993/ 22827993 – 5WK9 7371	NOx sensor for	24V
	7422219283/ 22219283 – 5WK9 6717B	RENAULT/ VOLVO, Euro 6	
RV802	7422827995/ 22827995 – 5WK9 7372	NOx sensor for	24V
	7422219284/ 22219284 – 5WK9 6732B	RENAULT/VOLVO, Euro 6	
RV803	7422827991/ 22827991 – 5WK9 7368	NOx sensor for	24V
	7422219281/ 22219281 – 5WK9 6718B	RENAULT/VOLVO, Euro 6	
RV804			
RV805			
RV806			
RV807			
RV808			
RV809			
RV810			
VO701	22303391 – 5WK9 7366, 21636088, 21567763		12V
	22014032 – 5WK9 6643E, 21346963, 21479637		
VO702	22303390 – 5WK9 7367, 21636091, 21567764		12V
	21479638, 21346959, 21302275, 21227721		
VO703			
VO704			

All NOx sensors are equipped with original new NGK probe.

## NOx Sensor List

REFERENCE	OE –Ref. No.	Descriptions	24V/12V
SC801	2294290 –5WK97400, 2296800 –5WK96694C	NOx sensor for	24V
	2247380 –5WK96694B, 2064768 –5WK96694A	SCANIA, Euro 6	
SC802	2294291 – 5WK97401, 2296801 –5WK96695C	NOx sensor for	24V
	2247381 –5WK96695B, 2064769 –5WK9 6695A	SCANIA, Euro 6	
SC803	2296799 – 5WK9 6612F, 2247379, 1872080	NOx sensor for SCANIA	24V
	2020691 – 5WK9 6612D, 1782596, 1908536		
SC804			
SC805			

## Exhaust Temperature Sensor

REFERENCE	OE -Ref. No.	Applications
DA601	1810690, 1689811	DAF XF105 – CF75 – CF85, Upstream, Euro 5
DA602	1810691, 1689812	DAF XF105 – CF75 – CF85, Downstream, Euro 5
RV601	7420889280/20889280,7420451990/20451990	RVI, VOLVO FH-FM-B13R
RV602	7421412472/ 21412472	RVI, VOLVO FH-FM-B5LH-B8R-B11R
RV603	7421285163/ 21285163	RVI GAMME C-D-T, VOLVO FH-FM-FE-FL
TS-MA601	81274210264, 81274210263, 81274210253	MAN Trucks, TGL- TGA- TGS- TGM- TGX
	81274210237, 81274210242	

All NOx sensors are equipped with original new NGK probe.

## Exhaust Temperature Sensor

REFERENCE	OE -Ref. No.	Applications
MB601	A0061530628, <b>A1614310103</b>	MERCEDES-BENZ Trucks, Actros- Axor- Antos
MB602	A0061530728	MERCEDES-BENZ Trucks,
TS-SC601	2265872	SCANIA Trucks,
TS-SC602	2604683	SCANIA

All NOx sensors are equipped with original new NGK probe.

[www.0086PARTS.com](http://www.0086PARTS.com)

## Exhaust Temperature Sensor

REFERENCE	OE -Ref. No.	Applications
IV601	5801455940, 504102603	IVECO (Before Catalyst), Stralis
IV602	5801455941, 504109529	IVECO (After Catalyst)

All NOx sensors are equipped with original new NGK probe.



AdBlue<sup>®</sup> x TEMCO  
a reliable & affordable solution

AdBlue<sup>®</sup> helps vehicles meet  
Euro 5 and 6 emissions standards

EXPERTISE LEAD EXCELLENCE

**Temco**

For a blue sky & better tomorrow



# TEMCO – Why AdBlue<sup>®</sup> For a blue sky & better tomorrow

## What is AdBlue<sup>®</sup>

AdBlue<sup>®</sup> is the VDA's registered name for Diesel Exhaust Fluid (DEF) and is a pure solution of 32.5% urea and de-ionised water.

## Why Use AdBlue<sup>®</sup>

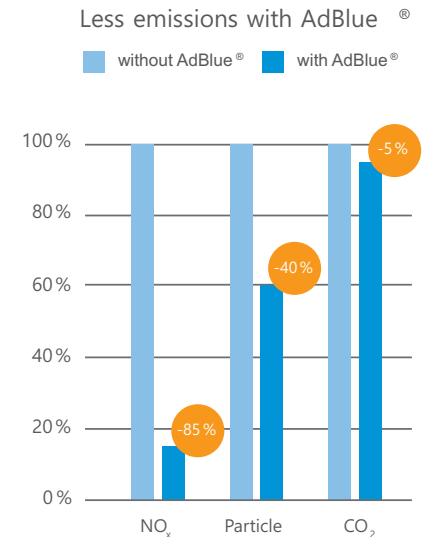
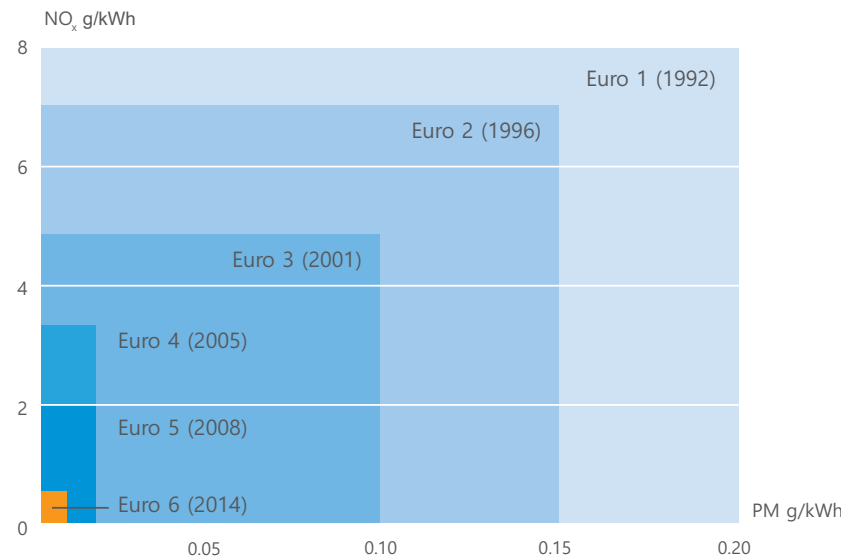
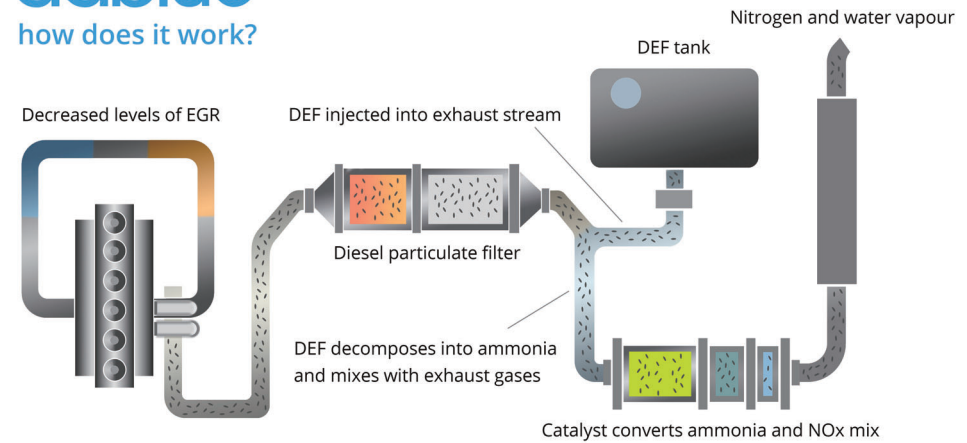
AdBlue<sup>®</sup> is essential for the correct operation of an advanced pollution control technology installed in vehicle exhaust system called Selective Catalytic Reduction or SCR. Unlike diesel, AdBlue<sup>®</sup> is a clear, non-toxic liquid that is safe to handle and does not damage the environment.

AdBlue<sup>®</sup> is required by the majority of heavy duty diesel vehicles using Euro V & VI engine technology.

## What does AdBlue<sup>®</sup> do?

The SCR system uses AdBlue<sup>®</sup> and a base metal catalyst in the vehicle's muffler to reduce Nitric Oxide (NO<sub>x</sub>) to water vapour and atmospheric nitrogen. This reaction takes place downstream of the engine in the exhaust system and is known as "after-treatment". The SCR system has the potential to achieve > 80% NO<sub>x</sub> reduction rates, allowing the engine to be turned for maximum efficiency which goes and estimated fuel saving of 3-5%.

AdBlue<sup>®</sup> is required by the majority of heavy duty diesel vehicles using Euro V & VI engine technology.



## AdBlue<sup>®</sup> Production Overview

AdBlue<sup>®</sup> is essential for the correct operation of an advanced pollution control technology installed in vehicle exhaust system called Selective Catalytic Reduction or SCR. Unlike diesel, AdBlue<sup>®</sup> is a clear, non-toxic liquid that is safe to handle and does not damage the environment.

## AdBlue<sup>®</sup> Legal Overview

The VDA is the custodian of the trademark AdBlue<sup>®</sup>. It is paramount that the AUS 32 is blended according to the ISO 22241 spec with the certification of the VDA, to be able to market and sell the product as AdBlue<sup>®</sup>

# TEMCO - Advantage

## Expertise with benefits

Key benefits of AdBlue® by TEMCO:



It protects SCR systems  
As the purity of AdBlue by BASF is closely controlled, it does not damage SCR systems.



It reduces fuel consumption  
AdBlue® cuts fuel consumption by 5 %  
– without reducing engine output.



It reduces exhaust emissions  
The amount of NO<sub>x</sub> in exhaust gas can be reduced by 85 – 95 %.



It is environmentally friendly  
AdBlue® by BASF is fully biodegradable and does not pollute water and soil.



It helps vehicles meet the latest emissions standards  
AdBlue® helps vehicles comply with Euro 4, 5 and 6 standards.



It has a long shelf life  
AdBlue® has a shelf life of at least 12 months when stored under recommended conditions.

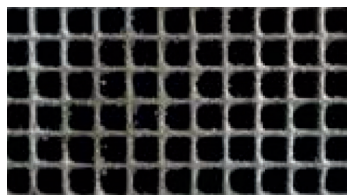


It is delivered in liquid form  
As AdBlue® by BASF is supplied in liquid form, it is easy to store and deploy.

Parameter	Requirements acc. to ISO 22241	Test Method
Urea Content	31.8 - 33.2%	ISO 22241-2 Ann. C
Density at 20 °C	1.087 - 1.093 g/cm	DIN EN ISO 12185
Refracting Index at 20 °C	1.3814 - 1.3843	ISO 22241-2 Ann. C
Alkalinity as NH <sub>3</sub>	≤ 0.2 %	ISO 22241-2 Ann. D
Biuret	≤ 0.3 %	ISO 22241-2 Ann. E
Aldehyde	≤ 5 mg/kg	ISO 22241-2 Ann. F
Insolubles	≤ 20 mg/kg	ISO 22241-2 Ann. G
Phosphate (PQ)	≤ 0.5 mg/kg	ISO 22241-2 Ann. H
Calcium	≤ 0.5 mg/kg	ISO 22241-2 Ann. I
Iron	≤ 0.5 mg/kg	ISO 22241-2 Ann. I
Copper	≤ 0.2 mg/kg	ISO 22241-2 Ann. I
Zinc	≤ 0.2 mg/kg	ISO 22241-2 Ann. I
Chromium	≤ 0.2 mg/kg	ISO 22241-2 Ann. I
Nickel	≤ 0.2 mg/kg	ISO 22241-2 Ann. I
Aluminum	≤ 0.5 mg/kg	ISO 22241-2 Ann. I
Magnesium	≤ 0.5 mg/kg	ISO 22241-2 Ann. I
Sodium	≤ 0.5 mg/kg	ISO 22241-2 Ann. I
Potassium	≤ 0.5 mg/kg	ISO 22241-2 Ann. I

✓ AdBlue® by TEMCO:

- Reduces maintenance costs
- Extends SCR system lifespan
- Ensures SCR system efficiency
- Improves fuel economy

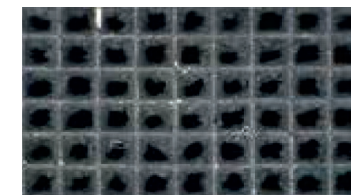


SCR system after 40,000 km – using AdBlue® by TEMCO



Low-quality aqueous urea solution:

- Reduced SCR system lifespan
- Increased emission of pollutants
- Clogged catalytic converter
- Clogged exhaust and injector



SCR system after 40,000 km – using low-quality aqueous urea solution

# TEMCO - Application

## For board range diesel engines

For all applications

AdBlue® can be deployed in all diesel engines that feature SCR technology – including those in buses, trucks, ships, cars, stationary and mobile power plants, and mining, construction and agricultural vehicles.

