

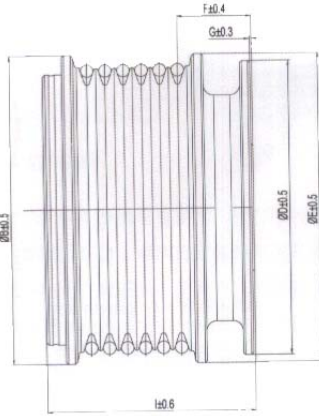
# ALTERNATOR PULLEY



## PARTS NO.

## PRODUCT INFO

## CROSSREFERENCE



NB80005

No. of groove	6
Angle of groove	37
Out diameter	61
OD of groove:	55.8
Height	40.95
Distance between mandrel end & 1st teeth	14.55
Inner diameter	17
Depth of reference hole	11.1
Distance between mandrel & pulley end surface	0.3
Direction of rotation	CW
Screw	M16
Protetive Cap	Outside

INA:	F-227628.4 F-227628.5
VALEO:	593491
BOSCH:	F00M991002:
WAI	24-91255-3
HITACHI	GD214998-1
VW	028903119AM
CARGO	230293

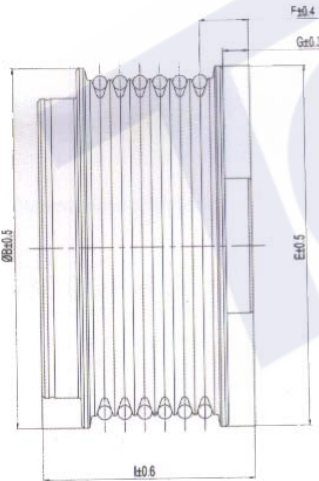
## APPLICATION

AUDI: A2  
 FORD: GALAXY  
 SEAT: ALHAMBRA  
 SKODA: FABIA  
 VW: BORA CADDY  
 GOLF: IV

## PARTS NO.

## PRODUCT INFO

## CROSSREFERENCE



NB80008

No. of groove	6
Angle of groove	37
Out diameter	64.25
OD of groove:	59.92
Height	37.8
Distance between mandrel end & 1st teeth	8.86
Inner diameter	17
Depth of reference hole	13.2
Distance between mandrel & pulley end surface	4.7
Direction of rotation	CW
Screw	M16
Protetive Cap	Outside

INA:	4702068
VALEO:	
BOSCH:	
WAI	
HITACHI	
VW	
CARGO	

## APPLICATION

CHERY 1.5TD

P.S.

1. THE LENGTH DOES NOT INCLUDE DUST COVER.

2. CW MEANS CLOCKWISE, CCW MEAS ANTICLOCKWISE.

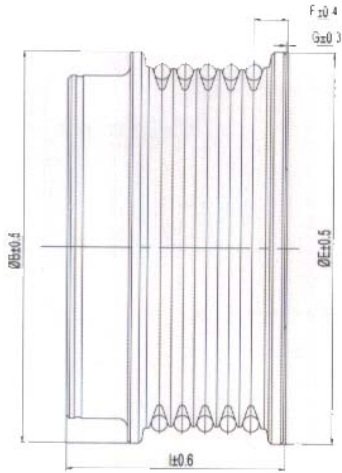
# ALTERNATOR PULLEY



## PARTS NO.

## PRODUCT INFO

## CROSSREFERENCE



No. of groove	5
Angle of groove	37
Out diameter	61
OD of groove:	55.87
Height	35
Distance between mandrel end & 1st teeth	5
Inner diameter	17
Depth of reference hole	11.1
Distance between mandrel & pulley end surface	0.3
Direction of rotation	CW
Screw	M16
Protetive Cap	outside

INA	F-225652.10:F-225653.6
VALEO:	2547439 2574439
BOSCH:	FOOM991043
WAI	24-91256-3W
HITACHI	
VW	022903119B
CARGO	230302

### APPLICATION

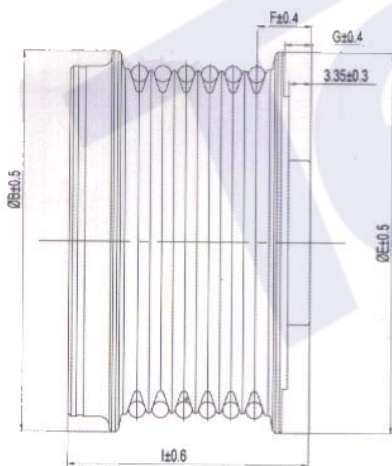
AUDI:A4 1.9TDI  
 PORSCHE:911  
 BOXSTER  
 SKODA: SUPERB 2.0

NB80011

## PARTS NO.

## PRODUCT INFO

## CROSSREFERENCE



No. of groove	6
Angle of groove	37
Out diameter	58
OD of groove	52.57:
Height	36.6
Distance between mandrel end & 1st teeth	8.3
Inner diameter	17
Depth of reference hole	17
Distance between mandrel & pulley end surface	4.1
Direction of rotation	CW
Screw	M16
Protetive Cap	outside

INA :	
VALEO:	2650319
BOSCH:	
WAI	
HITACHI	
VW	
CARGO	

### APPLICATION

NB80012

### P.S.

- 1.THE LENGTH DOES NOT INCLUDE DUST COVER.
- 2.CW MEANS CLOCKWISE,CCW MEAS ANTICLOCKWISE.

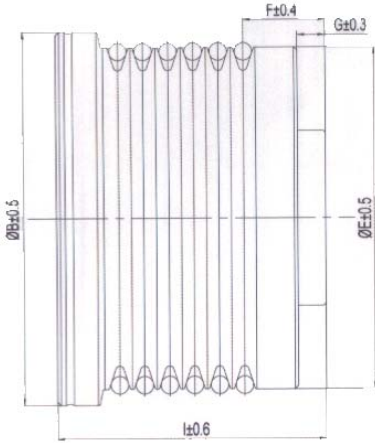
# ALTERNATOR PULLEY



## PARTS NO.

## PRODUCT INFO

## CROSSREFERENCE



No. of groove	6
Angle of groove	36
Out diameter	48.8
OD of groove:	48.8
Height	38.3
Distance between mandrel end & 1st teeth	11.65
Inner diameter	17
Depth of reference hole	14.4
Distance between mandrel & pulley end surface	3.95
Direction of rotation	CW
Screw	M16
Protetive Cap	outside

INA:	
VALEO:	2604127
BOSCH:	
WAI	
HITACHI	
VW	
CARGO	

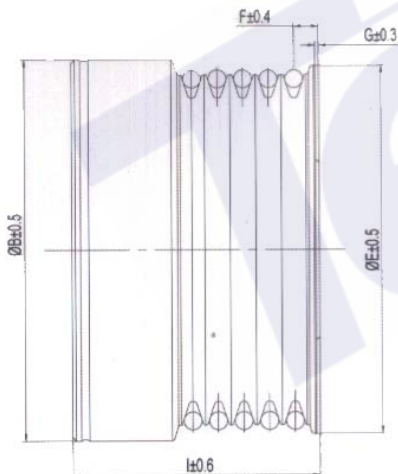
## APPLICATION

NB80013

## PARTS NO.

## PRODUCT INFO

## CROSSREFERENCE



No. of groove	5
Angle of groove	36
Out diameter	51.5
OD of groove:	
Height	34.4
Distance between mandrel end & 1st teeth	3.3
Inner diameter	17
Depth of reference hole	11.1
Distance between mandrel & pulley end surface	3
Direction of rotation	CW
Screw	M16
Protetive Cap	outside

INA:	
VALEO:	2608612
WAI	
HITACHI	
VW	
CARGO	

## APPLICATION

ROEWO 350

NB80015

### P.S.

- 1.THE LENGTH DOES NOT INCLUDE DUST COVER.
- 2.CW MEANS CLOCKWISE,CCW MEAS ANTICLOCKWISE.

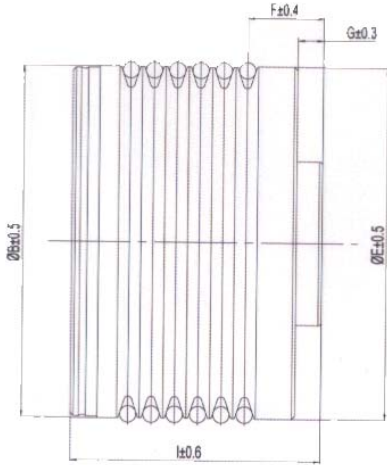
# ALTERNATOR PULLEY

RoHS CE UL ISO9001:2000

## PARTS NO.

## PRODUCT INFO

## CROSSREFERENCE



No. of groove	6
Angle of groove	40
Out diameter	54.3
OD of groove	55.29:
Height	38.3
Distance between mandrel end & 1st teeth	10.2
Inner diameter	17
Depth of reference hole	14.4
Distance between mandrel & pulley end surface	4
Direction of rotation	CW
Screw	M16
Protetive Cap	Outside

INA:  
 VALEO 2601052 4547636:  
 BOSCH:  
 WAI  
 HITACHI  
 VW  
 CARGO

## APPLICATION

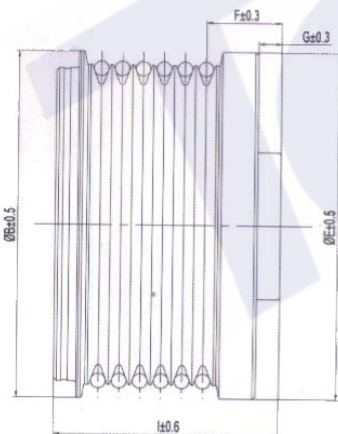
CITROEN

NB80017

## PARTS NO.

## PRODUCT INFO

## CROSSREFERENCE



No. of groove	6
Angle of groove	40
Out diameter	59
OD of groove:	54.3
Height	38.3
Distance between mandrel end & 1st teeth	12.9
Inner diameter	17
Depth of reference hole	16
Distance between mandrel & pulley end surface	3.95
Direction of rotation	CW
Screw	M16
Protetive Cap	Outside

INA: F-236591 F-236591.1  
 VALEO:2602911 593832  
 BOSCH:  
 WAI  
 HITACHI  
 VW  
 CARGO 234794

## APPLICATION

CITROEN:C5,C8D  
 PEUGEOT"406,806,EXPERT

NB80018

### P.S.

- 1.THE LENGTH DOES NOT INCLUDE DUST COVER.
- 2.CW MEANS CLOCKWISE,CCW MEAS ANTICLOCKWISE.

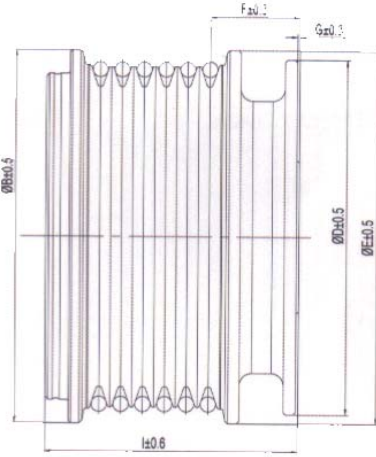
# ALTERNATOR PULLEY



## PARTS NO.

## PRODUCT INFO

## CROSSREFERENCE



No. of groove	6
Angle of groove	37
Out diameter	61
OD of groove:	56.2
Height	40.95
Distance between mandrel end & 1st teeth	14.55
Inner diameter	17
Depth of reference hole	11.1
Distance between mandrel & pulley end surface	0.3
Direction of rotation	CW
Screw	M16
Protetive Cap	Outside

INA: F-226804.4 F-226804.5  
 VALEO:  
 BOSCH: 1126601559  
 WAI  
 HITACHI:  
 VW: 038903119 038903165  
 CARGO: 138203

### APPLICATION

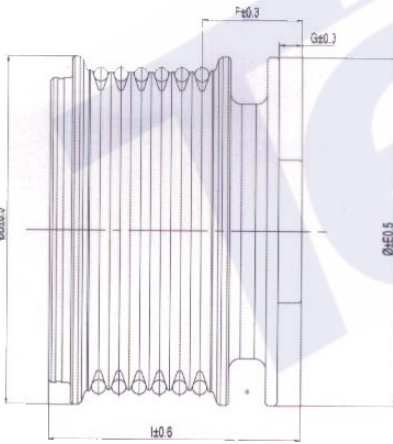
AUDI: A3 1.9TDI  
 SKODA:OCTAVIA,  
 GOLF IV 1.9SDI/TDI,SH 1.8T 20V  
 NEW BEETLE 1.9TDI  
 SEAT:ALHAMBRA 1.8 TURBO

NB80019

## PARTS NO.

## PRODUCT INFO

## CROSSREFERENCE



No. of groove	6
Angle of groove	40
Out diameter	59
OD of groove:	55.28
Height	43.55
Distance between mandrel end & 1st teeth	17.45
Inner diameter	17
Depth of reference hole	14.4
Distance between mandrel & pulley end surface	4.05
Direction of rotation	CW
Screw	M16
Protetive Cap	Outside

INA: F-550181.03 535010510  
 VALEO: 2602881 2604211  
 BOSCH:  
 WAI  
 HITACHI  
 VW  
 CARGO

### APPLICATION

DECIA:LOGAN 1.4,1.6  
 MEGANE 1 1.4 16V,1.6  
 SCENIC 1.4 16V,1.6 16V

NB80020

### P.S.

- 1.THE LENGTH DOES NOT INCLUDE DUST COVER.
- 2.CW MEANS CLOCKWISE,CCW MEAS ANTICLOCKWISE.



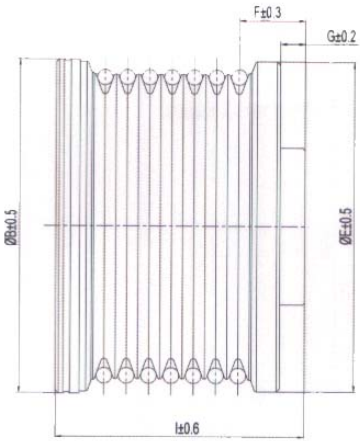
# ALTERNATOR PULLEY



## PARTS NO.

## PRODUCT INFO

## CROSSREFERENCE



No. of groove	7
Angle of groove	40
Out diameter	52.6
OD of groove:	48.63
Height	40.8
Distance between mandrel end & 1st teeth	11.65
Inner diameter	17
Depth of reference hole	16
Distance between mandrel & pulley end surface	5.05
Direction of rotation	CW
Screw	M16
Protetive Cap	Outside

INA: F-236675.02 F-236675.03  
 VALEO: 2601010 595226  
 BOSCH:  
 WAI  
 HITACHI  
 VW  
 CARGO

### APPLICATION

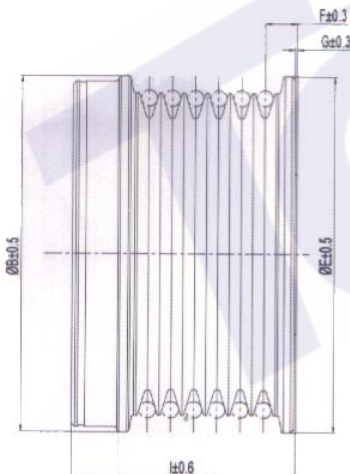
RENAULT

NB80021

## PARTS NO.

## PRODUCT INFO

## CROSSREFERENCE



No. of groove	6
Angle of groove	34
Out diameter	55
OD of groove:	49.75
Height	34.6
Distance between mandrel end & 1st teeth	5
Inner diameter	17
Depth of reference hole	11.1
Distance between mandrel & pulley end surface	0.3
Direction of rotation	CW
Screw	M16
Protetive Cap	Outside

INA:  
 VALEO: 2604508  
 BOSCH:  
 WAI  
 HITACHI  
 VW  
 CARGO

### APPLICATION

CHERY 1.5TD

NB80022

### P.S.

- 1.THE LENGTH DOES NOT INCLUDE DUST COVER.
- 2.CW MEANS CLOCKWISE,CCW MEAS ANTICLOCKWISE.

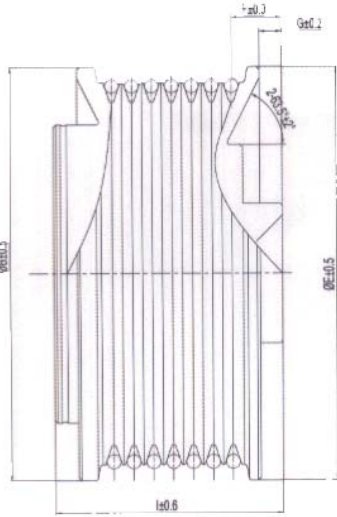
# ALTERNATOR PULLEY

RoHS COMPLIANCE CE UL ISO9001:2000

## PARTS NO.

## PRODUCT INFO

## CROSSREFERENCE



No. of groove	7
Angle of groove	37
Out diameter	74
OD of groove:	68.4
Height	40.8
Distance between mandrel end & 1st teeth	9
Inner diameter	17
Depth of reference hole	20
Distance between mandrel & pulley end surface	4
Direction of rotation	CW
Screw	M16
Protetive Cap	Outside

INA:  
 VALEO:  
 BOSCH:  
 WAI  
 HITACHI  
 VW  
 CARGO

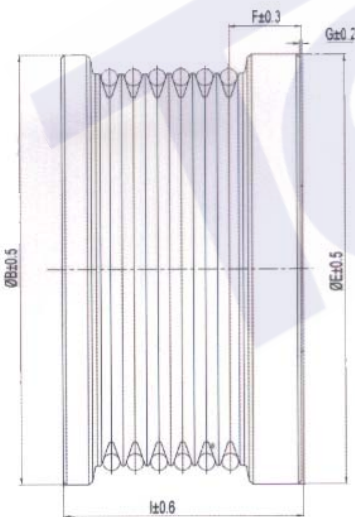
## APPLICATION

NB80023

## PARTS NO.

## PRODUCT INFO

## CROSSREFERENCE



No. of groove	6
Angle of groove	38
Out diameter	64
OD of groove:	60.2
Height	35.9
Distance between mandrel end & 1st teeth	10.9
Inner diameter	17
Depth of reference hole	7
Distance between mandrel & pulley end surface	0.3
Direction of rotation	CW
Screw	M16
Protetive Cap	Intside

INA:  
 VALEO:  
 BOSCH:  
 WAI  
 HITACHI  
 VW  
 CARGO

## APPLICATION

NB80024

### P.S.

1. THE LENGTH DOES NOT INCLUDE DUST COVER.

2. CW MEANS CLOCKWISE, CCW MEAS ANTICLOCKWISE.

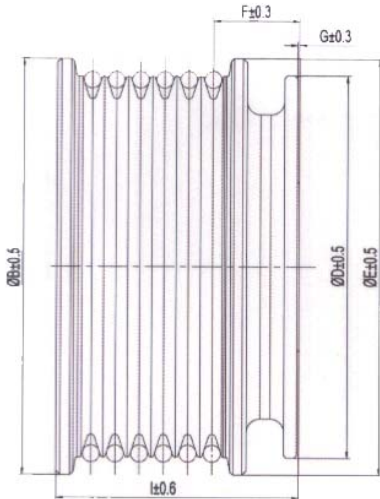
# ALTERNATOR PULLEY



## PARTS NO.

## PRODUCT INFO

## CROSSREFERENCE



No. of groove	6
Angle of groove	36
Out diameter	61
OD of groove:	55.8
Height	35.6
Distance between mandrel end & 1st teeth	12.7
Inner diameter	17
Depth of reference hole	11.1
Distance between mandrel & pulley end surface	0.3
Direction of rotation	CW
Screw	M16
Protetive Cap	Inside

INA: 61D092215 F-231142  
 VALEO: F00M147732,F00M991108  
 BOSCH:24-91274  
 WAI  
 HITACHI 06B-903-119B  
 VW  
 CARGO

### APPLICATION

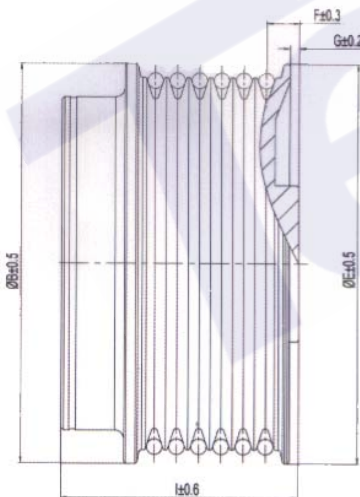
AUDI: A4(8D2,8D5,B5)1.6  
 A4(8E2,8E5,B6)1.6,1.8T  
 A4(8EC,8ED)1.6,2.0  
 A6(4B,C5)2.0

NB80025

## PARTS NO.

## PRODUCT INFO

## CROSSREFERENCE



No. of groove	6
Angle of groove	36
Out diameter	59
OD of groove:	53
Height	38
Distance between mandrel end & 1st teeth	5.3
Inner diameter	17
Depth of reference hole	14.4
Distance between mandrel & pulley end surface	1.5
Direction of rotation	CW
Screw	M16
Protetive Cap	Outside

INA: F-237401.01  
 VALEO:  
 BOSCH:  
 WAI 24-2281-3  
 HITACHI  
 VW  
 CARGO

### APPLICATION

FORD  
 MERCURY  
 MAZDA

NB80026

### P.S.

- 1.THE LENGTH DOES NOT INCLUDE DUST COVER.
- 2.CW MEANS CLOCKWISE,CCW MEAS ANTICLOCKWISE.



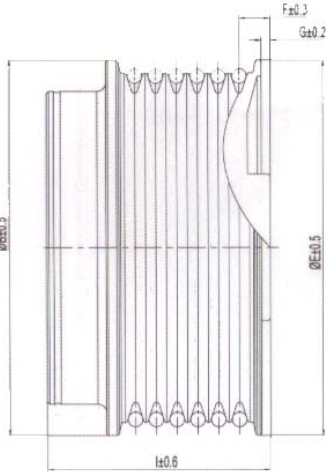
# ALTERNATOR PULLEY



## PARTS NO.

## PRODUCT INFO

## CROSSREFERENCE



No. of groove	6
Angle of groove	37
Out diameter	64
OD of groove:	55.9
Height	38
Distance between mandrel end & 1st teeth	5.3
Inner diameter	17
Depth of reference hole	14.4
Distance between mandrel & pulley end surface	1.5
Direction of rotation	CW
Screw	M16
Protetive Cap	Outside

INA: F-233591 61D082723  
 VALEO:  
 BOSCH:  
 WAI 24-2278-3  
 HITACHI  
 VW  
 CARGO

### APPLICATION

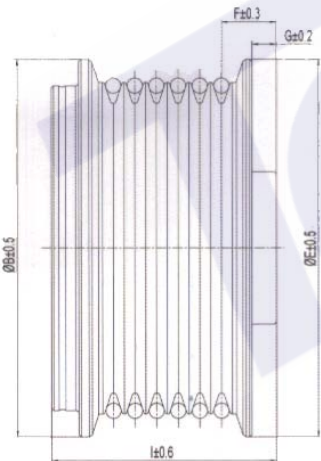
FORD  
 MERCURY

NB80027

## PARTS NO.

## PRODUCT INFO

## CROSSREFERENCE



No. of groove	6
Angle of groove	36
Out diameter	62
OD of groove:	54.4
Height	37
Distance between mandrel end & 1st teeth	9
Inner diameter	17
Depth of reference hole	17
Distance between mandrel & pulley end surface	4
Direction of rotation	CW
Scre	M16
Protetive Cap	Outside

INA: F-235931  
 VALEO:  
 BOSCH:  
 WAI 24-290-001  
 HITACHI  
 VW  
 CARGO

### APPLICATION

FORD

NB80028

### P.S.

- 1.THE LENGTH DOES NOT INCLUDE DUST COVER.
- 2.CW MEANS CLOCKWISE,CCW MEAS ANTICLOCKWISE.

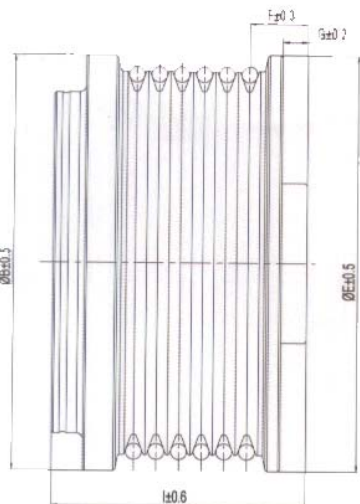
# ALTERNATOR PULLEY

RoHS COMPLIANCE CE UL ISO9001:2000

## PARTS NO.

## PRODUCT INFO

## CROSSREFERENCE



No. of groove	6
Angle of groove	40
Out diameter	65
OD of groove:	60
Height	39.7
Distance between mandrel end & 1st teeth	9
Inner diameter	17
Depth of reference hole	171
Distance between mandrel & pulley end surface	4
Direction of rotation	CW
Screw	M16
Protetive Cap	Outside

INA:	F-229974 535001710
VALEO:	
BOSCH:	
WAI	24-2279
HITACHI	
VW	
CARGO	

### APPLICATION

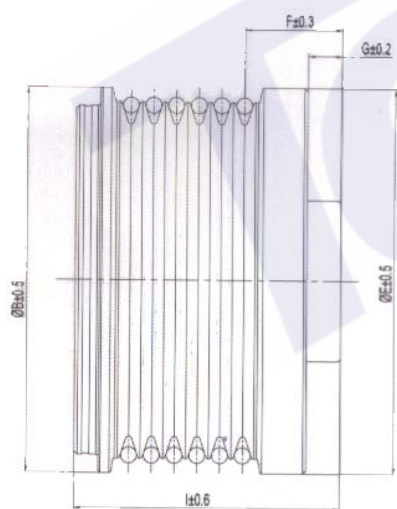
FORD ,LINCOLN  
 MAZDA,  
 MERCEDES-BENZ  
 PROBE II(ECP)2.5V6 24N

NB80029

## PARTS NO.

## PRODUCT INFO

## CROSSREFERENCE



No. of groove	6
Angle of groove	36.6
Out diameter	60.1
OD of groove:	55.5
Height	41.6
Distance between mandrel end & 1st teeth	15.2
Inner diameter	17
Depth of reference hole	11.3
Distance between mandrel & pulley end surface	5.3
Direction of rotation	CW
Screw	M14LH
Protetive Cap	Outside

INA:	F-231108.02 535002410
VALEO:	
BOSCH:	
WAI	28-82275-3W
HITACHI	
VW	
CARGO	

### APPLICATION

VOLVO

NB80030

P.S.

- 1.THE LENGTH DOES NOT INCLUDE DUST COVER.
- 2.CW MEANS CLOCKWISE,CCW MEAS ANTICLOCKWISE.

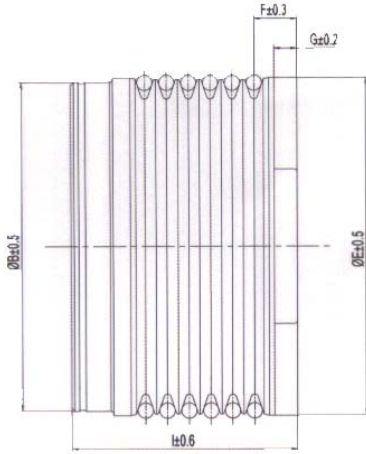
# ALTERNATOR PULLEY



## PARTS NO.

## PRODUCT INFO

## CROSSREFERENCE



No. of groove	6
Angle of groove	37
Out diameter	54.3
OD of groove:	54.3
Height	35
Distance between mandrel end & 1st teeth	7
Inner diameter	17
Depth of reference hole	11.3
Distance between mandrel & pulley end surface	3.8
Direction of rotation	CW
Screw	M16
Protetive Cap	Outside

INA: 535003910  
 VALEO: 2547917 2605132  
 BOSCH:  
 WAI 24-94251-3W  
 HITACHI  
 VW  
 CARGO

### APPLICATION

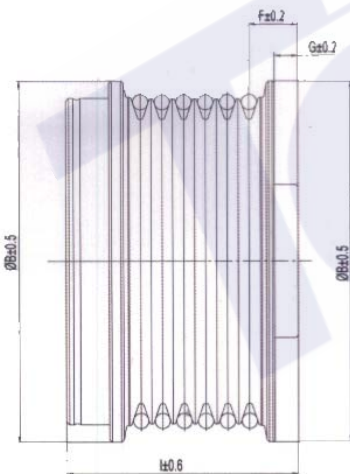
XANTIA 2.0L  
 FIAT: ULYSSE 2.0L  
 LANCIA: PHEDRA 2.2L  
 PEUGEOT: 206 2.0L, 406 2.0L, 2.2L  
 CITROEN: C5 2.0L, 2.2L, C8 2.0L, 2.2L

Nb80031

## PARTS NO.

## PRODUCT INFO

## CROSSREFERENCE



No. of groove	6
Angle of groove	38
Out diameter	59
OD of groove:	54.1
Height	38.1
Distance between mandrel end & 1st teeth	7.9
Inner diameter	17
Depth of reference hole	13.2
Distance between mandrel & pulley end surface	3.8
Direction of rotation	CW
Screw	M16
Protetive Cap	Outside

INA: 535 0063 10  
 VALEO: 439524 593891 2600161  
 BOSCH:  
 WAI 24-94252-3W  
 HITACHI  
 VW  
 CARGO

### APPLICATION

FIAT  
 OPEL  
 SUZUKI  
 VAUXHALL

NB80032

P.S.

1. THE LENGTH DOES NOT INCLUDE DUST COVER.

2. CW MEANS CLOCKWISE, CCW MEAS ANTICLOCKWISE.

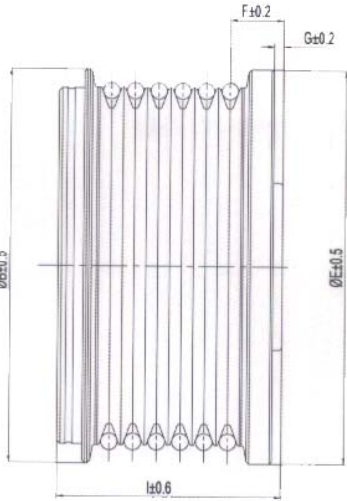
# ALTERNATOR PULLEY



## PARTS NO.

## PRODUCT INFO

## CROSSREFERENCE



No. of groove	6
Angle of groove	40
Out diameter	59
OD of groove:	54.2
Height	33.5
Distance between mandrel end & 1st teeth	8
Inner diameter	17
Depth of reference hole	11.13
Distance between mandrel & pulley end surface	1.4
Direction of rotation	CW
Screw	M16
Protetive Cap	Outside

INA:  
 VALEO:  
 BOSCH: F00M147764 F00M991171  
 WAI 24-91278-3W  
 HITACHI  
 VW  
 CARGO

## APPLICATION

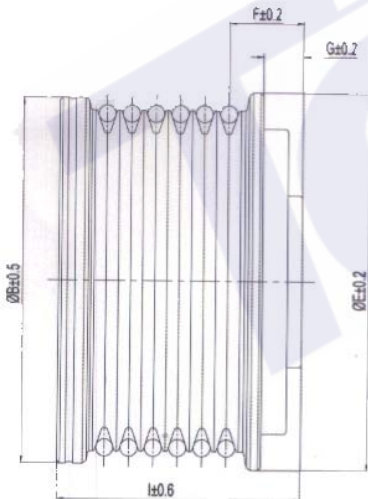
CITROEN  
 PEUGEOT

NB80033

## PARTS NO.

## PRODUCT INFO

## CROSSREFERENCE



No. of groove	6
Angle of groove	35.4
Out diameter	55
OD of groove:	49.7
Height	36.7
Distance between mandrel end & 1st teeth	10.9
Inner diameter	17
Depth of reference hole	16.3
Distance between mandrel & pulley end surface	2.1
Direction of rotation	CW
Screw	M16
Protetive Cap	Outside

INA: F-559585 53500161-  
 VALEO:  
 BOSCH: 01221AA4Z0 01221AA5L0  
 WAI 24-91264-3W  
 HITACHI  
 VW  
 CARGO

## APPLICATION

MERCEDES BENZ

NB80034

P.S.

1.THE LENGTH DOES NOT INCLUDE DUST COVER.

2.CW MEANS CLOCKWISE,CCW MEAS ANTICLOCKWISE.

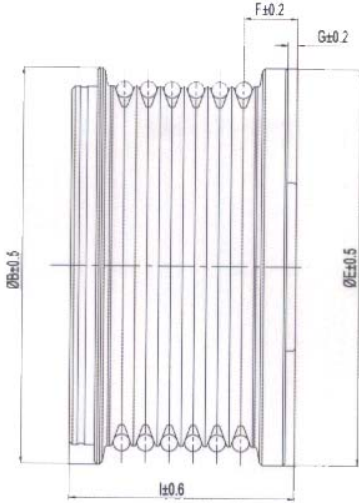
# ALTERNATOR PULLEY

RoHS CE UL ISO9001:2000

## PARTS NO.

## PRODUCT INFO

## CROSSREFERENCE



No. of groove	6
Angle of groove	36.7
Out diameter	53.1
OD of groove:	53.1
Height	37
Distance between mandrel end & 1st teeth	6.4
Inner diameter	17
Depth of reference hole	17.3
Distance between mandrel & pulley end surface	3.4
Direction of rotation	CW
Screw	M16
Protetive Cap	Outside

INA: F-232854 F-556615  
 VALEO:  
 BOSCH:  
 WAI 24-2282-3W  
 HITACHI  
 VW  
 CARGO

## APPLICATION

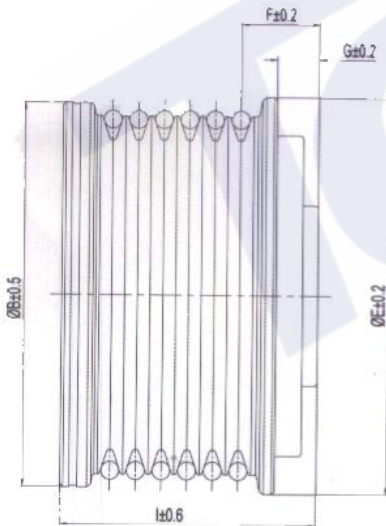
FORD  
 MONDEO

NB80035

## PARTS NO.

## PRODUCT INFO

## CROSSREFERENCE



No. of groove	5
Angle of groove	36
Out diameter	48.8
OD of groove:	48.8
Height	38.3
Distance between mandrel end & 1st teeth	15.2
Inner diameter	17
Depth of reference hole	16
Distance between mandrel & pulley end surface	4
Direction of rotation	CW
Screw	M16
Protetive Cap	Outside

INA: f-234637.04  
 VALEO: 2548621 2604092 593516  
 BOSCH:  
 WAI 24-94253-3  
 HITACHI  
 VW  
 CARGO

## APPLICATION

OPEL:MOVANO 2.5L  
 ,VIVARO 1.9L  
 RENAULT:MASTER 1.9L  
 ,TRAFIC 1.9LI

NB80036

P.S.

1.THE LENGTH DOES NOT INCLUDE DUST COVER.

2.CW MEANS CLOCKWISE,CCW MEAS ANTICLOCKWISE.



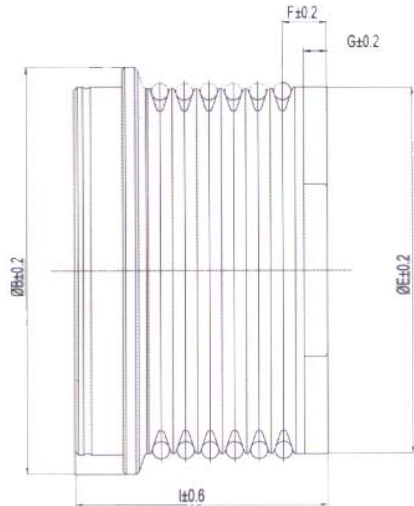
# ALTERNATOR PULLEY



## PARTS NO.

## PRODUCT INFO

## CROSSREFERENCE



No. of groove	6
Angle of groove	40
Out diameter	65
OD of groove:	60.5
Height	37.3
Distance between mandrel end & 1st teeth	13.2
Inner diameter	17
Depth of reference hole	11.1
Distance between mandrel & pulley end surface	3
Direction of rotation	CW
Screw	M17
Protetive Cap	Inside

INA: F-230866.4 F-230866.7  
 VALEO:  
 BOSCH:  
 WAI 24-93250-3W  
 HITACHI  
 VW  
 CARGO 230313

### APPLICATION

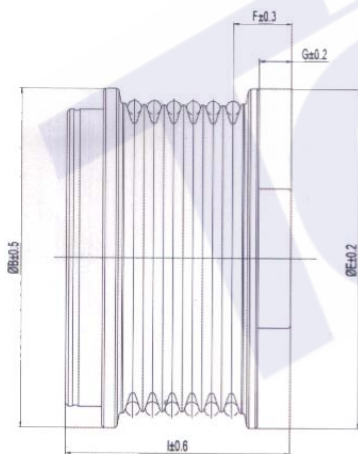
ALFA ROMEO  
 FIAT  
 LANCAI

NB80037

## PARTS NO.

## PRODUCT INFO

## CROSSREFERENCE



No. of groove	6
Angle of groove	37
Out diameter	61
OD of groove:	55.7
Height	40.5
Distance between mandrel end & 1st teeth	10.6
Inner diameter	17
Depth of reference hole	16
Distance between mandrel & pulley end surface	5.9
Direction of rotation	CW
Screw	M16
Protetive Cap	Outside

INA: F-556599.01  
 VALEO: 2546952 ,593515, 8641982  
 BOSCH:  
 WAI 24-94255-3  
 HITACHI  
 VW  
 CARGO

### APPLICATION

RENAULT KANGOO  
 1.9L,LAGUNA,MEGANE  
 ESPACE

NB80038

### P.S.

1.THE LENGTH DOES NOT INCLUDE DUST COVER.

2.CW MEANS CLOCKWISE,CCW MEAS ANTICLOCKWISE.

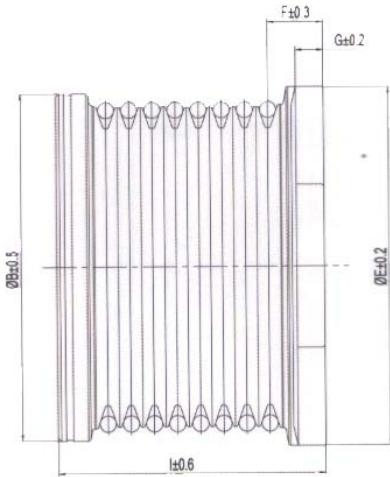
# ALTERNATOR PULLEY

RoHS COMPLIANCE CE UL ISO9001:2000

## PARTS NO.

## PRODUCT INFO

## CROSSREFERENCE



No. of groove	8
Angle of groove	36
Out diameter	55
OD of groove:	49.6
Height	41.1
Distance between mandrel end & 1st teeth	8.6
Inner diameter	17
Depth of reference hole	11.3
Distance between mandrel & pulley end surface	4.3
Direction of rotation	CW
Screw	M14
Protetive Cap	Outside

INA: F-558553  
 VALEO:  
 BOSCH:  
 WAI 24-82113-3  
 HITACHI  
 VW  
 CARGO

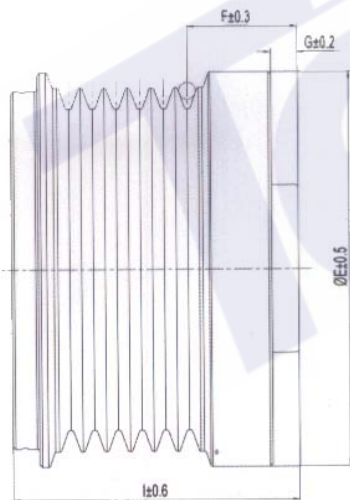
## APPLICATION

NB80039

## PARTS NO.

## PRODUCT INFO

## CROSSREFERENCE



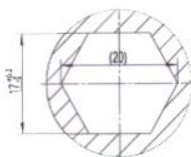
No. of groove	6
Angle of groove	39
Out diameter	59
OD of groove:	54.2
Height	43
Distance between mandrel end & 1st teeth	16.5
Inner diameter	17
Depth of reference hole	12
Distance between mandrel & pulley end surface	4
Direction of rotation	CW
Screw	M14
Protetive Cap	Outs4de

INA:  
 VALEO:  
 BOSCH:  
 WAI  
 HITACHI  
 VW  
 CARGO

## APPLICATION

OPEL  
 VOLKSWAGEN

NB80040



P.S.

1. THE LENGTH DOES NOT INCLUDE DUST COVER.
2. CW MEANS CLOCKWISE, CCW MEAS ANTICLOCKWISE.

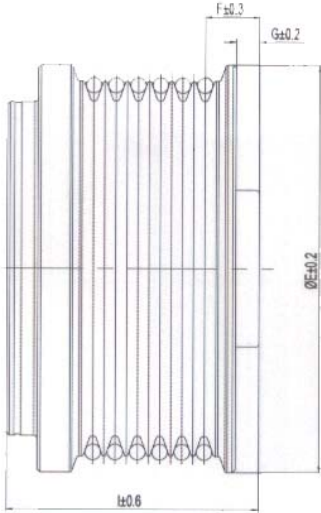
# ALTERNATOR PULLEY



## PARTS NO.

## PRODUCT INFO

## CROSSREFERENCE



No. of groove	6
Angle of groove	39
Out diameter	65
OD of groove:	59.9
Height	39.4
Distance between mandrel end & 1st teeth	8.7
Inner diameter	17
Depth of reference hole	17.6
Distance between mandrel & pulley end surface	3.7
Direction of rotation	CW
Screw	M17
Protetive Cap	Outside

INA: F-232600 535003510  
 VALEO:  
 BOSCH:  
 WAI 24-2280  
 HITACHI  
 VW  
 CARGO

### APPLICATION

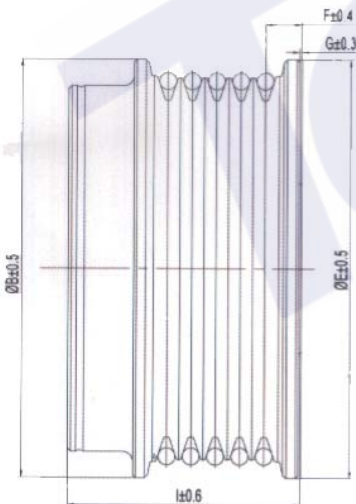
MAZDA:MPV II(LW)2.5V6

NB80041

## PARTS NO.

## PRODUCT INFO

## CROSSREFERENCE



No. of groove	5
Angle of groove	37
Out diameter	61
OD of groove:	55.87
Height	35
Distance between mandrel end & 1st teeth	5
Inner diameter	17
Depth of reference hole	16
Distance between mandrel & pulley end surface	0.3
Direction of rotation	CW
Screw	M16
Protetive Cap	Outside

INA: f-225653 535000410  
 VALEO:  
 BOSCH: 1126601566 0123320055  
 WAI 24-91106  
 HITACHI  
 VW 028903119t 028903028  
 CARGO

### APPLICATION

V.W.  
 AUDIi

NB80043

### P.S.

- 1.THE LENGTH DOES NOT INCLUDE DUST COVER.
- 2.CW MEANS CLOCKWISE,CCW MEAS ANTICLOCKWISE.

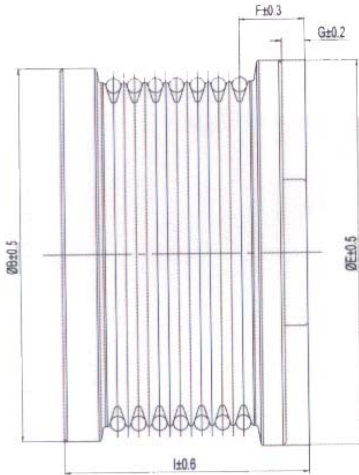
# ALTERNATOR PULLEY



## PARTS NO.

## PRODUCT INFO

## CROSSREFERENCE



No. of groove	7
Angle of groove	36
Out diameter	65
OD of groove:	55.1
Height	41.5
Distance between mandrel end & 1st teeth	11.1
Inner diameter	15
Depth of reference hole	15
Distance between mandrel & pulley end surface	3.9
Direction of rotation	CW
Screw	M14
Protetive Cap	Intside

INA: F-567525 535017310  
 VALEO:  
 BOSCH:  
 WAI 24-82114-3  
 HITACHI  
 VW  
 CARGO

### APPLICATION

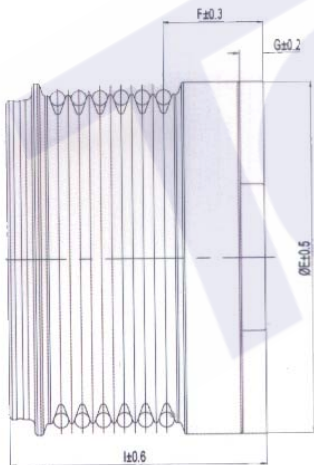
TOYOTA:  
 HIACE IV (H1,H2) 2.5D-4D  
 HILUX 2.5D, 2.5D4d  
 HILUX (N) 2.5D-4D  
 LAND CRUISER(J12) 3.0D-4D

NB80044

## PARTS NO.

## PRODUCT INFO

## CROSSREFERENCE



No. of groove	6
Angle of groove	40
Out diameter	58.7
OD of groove:	54.8
Height	43.8
Distance between mandrel end & 1st teeth	4
Inner diameter	17
Depth of reference hole	14
Distance between mandrel & pulley end surface	16.8
Direction of rotation	CW
Screw	M16
Protetive Cap	Outside

INA: 535 0117 10  
 VALEO: 493839 593610 439306  
 BOSCH:  
 WAI 24-94254  
 HITACHI  
 VW  
 CARGO

### APPLICATION

RENAULT

NB80045

### P.S.

- 1.THE LENGTH DOES NOT INCLUDE DUST COVER.
- 2.CW MEANS CLOCKWISE,CCW MEAS ANTICLOCKWISE.

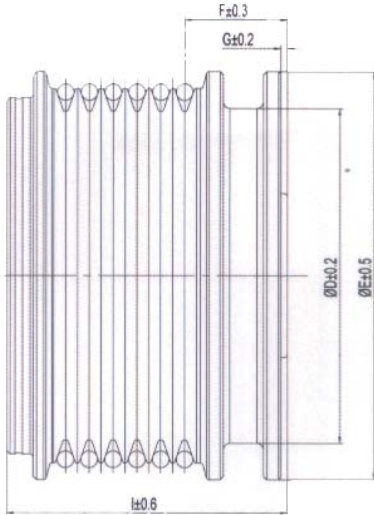
# ALTERNATOR PULLEY



## PARTS NO.

## PRODUCT INFO

## CROSSREFERENCE



No. of groove	6
Angle of groove	38
Out diameter	61
OD of groove:	56.1
Height	42
Distance between mandrel end & 1st teeth	15.4
Inner diameter	17
Depth of reference hole	16
Distance between mandrel & pulley end surface	1
Direction of rotation	CW
Screw	M16
Protetive Cap	Outside

INA: F-226804 535001010  
 VALEO:  
 BOSCH: 1126601559 0123310035  
 WAI 24-91101-1  
 HITACHI  
 VW  
 CARGO

### APPLICATION

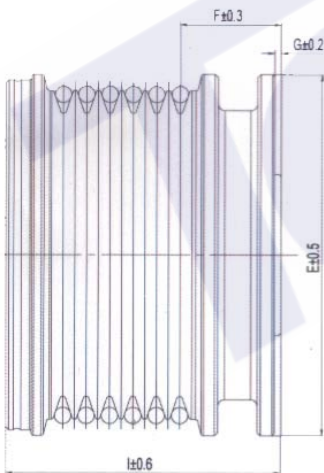
AUDI: A3(8L1)1.9TDI  
 SAET:ALHAMBRA 1.8T 20V  
 SKODA:OCTAVIA(1U) 1.9SDI, 1.9TDI  
 VOLKSWAGEN:GOLF IV 1.9TDI, 2.3V5,1.9SDIT 20V

NB80046

## PARTS NO.

## PRODUCT INFO

## CROSSREFERENCE



No. of groove	6
Angle of groove	38
Out diameter	55
OD of groove:	49.9
Height	42
Distance between mandrel end & 1st teeth	15.4
Inner diameter	17
Depth of reference hole	8
Distance between mandrel & pulley end surface	1
Direction of rotation	CW
Screw	M16
Protetive Cap	Outside

INA:  
 VALEO:  
 BOSCH: 1126601-597 0123320051  
 WAI 24-91263-1  
 HITACHI  
 VW  
 CARGO

### APPLICATION

VITO TRUCKS  
 MERCEDES SPRINTER

NB80047

### P.S.

- 1.THE LENGTH DOES NOT INCLUDE DUST COVER.
- 2.CW MEANS CLOCKWISE,CCW MEAS ANTICLOCKWISE.



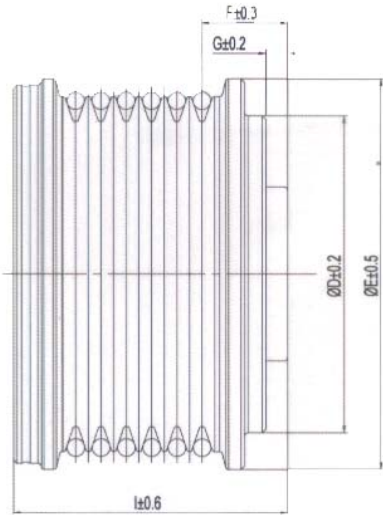
# ALTERNATOR PULLEY



## PARTS NO.

## PRODUCT INFO

## CROSSREFERENCE



No. of groove	6
Angle of groove	37
Out diameter	55
OD of groove:	50
Height	38.7
Distance between mandrel end & 1st teeth	12.1
Inner diameter	17
Depth of reference hole	16.3
Distance between mandrel & pulley end surface	3.1
Direction of rotation	CW
Screw	M16
Protetive Cap	Outside

INA:  
 VALEO:  
 BOSCH:01221AA4Z0 01221AA5LO  
 WAI 24-91264-1  
 HITACHI  
 VW  
 CARGO

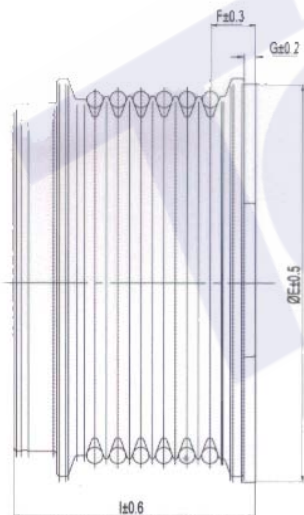
## APPLICATION

NB80048

## PARTS NO.

## PRODUCT INFO

## CROSSREFERENCE



No. of groove	6
Angle of groove	40
Out diameter	61
OD of groove:	55.6
Height	37.4
Distance between mandrel end & 1st teeth	7
Inner diameter	17
Depth of reference hole	16
Distance between mandrel & pulley end surface	1.8
Direction of rotation	CW
Screw	M16
Protetive Cap	Outside

INA:  
 VALEO:  
 BOSCH:  
 WAI 24-91241  
 HITAC HI  
 VW  
 CARGO

## APPLICATION

NB80049

P.S.

- 1.THE LENGTH DOES NOT INCLUDE DUST COVER.
- 2.CW MEANS CLOCKWISE,CCW MEAS ANTICLOCKWISE.

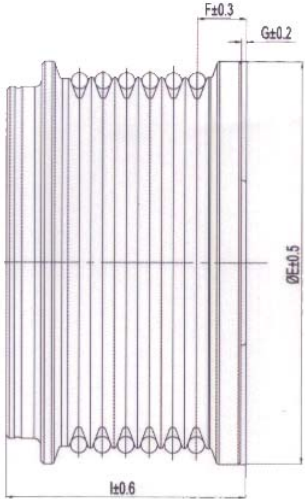
# ALTERNATOR PULLEY



## PARTS NO.

## PRODUCT INFO

## CROSSREFERENCE



No. of groove	6
Angle of groove	40
Out diameter	61
OD of groove:	56.2
Height	36.4
Distance between mandrel end & 1st teeth	7.5
Inner diameter	17
Depth of reference hole	11.3
Distance between mandrel & pulley end surface	0.8
Direction of rotation	CW
Screw	M16
Protetive Cap	Outside

INA: F-230846 535002210  
 VALEO:  
 BOSCH:F00M991044 0124515024  
 WAI 24-91260  
 HITACHI  
 VW 038903119L 0179030160  
 CARGO

### APPLICATION

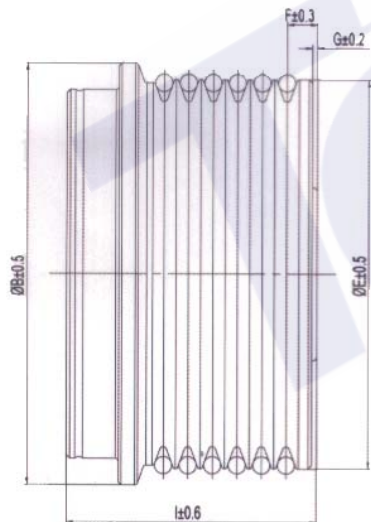
VOLKSWAGEN: PASSAT 2.3V5  
 , 2.3VR5

NB80050

## PARTS NO.

## PRODUCT INFO

## CROSSREFERENCE



No. of groove	6
Angle of groove	40
Out diameter	56.3
OD of groove:	56.3
Height	36.3
Distance between mandrel end & 1st teeth	4.4
Inner diameter	17
Depth of reference hole	11.3
Distance between mandrel & pulley end surface	0.7
Direction of rotation	CW
Screw	M16
Protetive Cap	Outside

INA: F-230209 535003210  
 VALEO:  
 BOSCH: F00M991090 F010LD1120  
 WAI 24-91268  
 HITACHI  
 VW 028903119A J377903015  
 CARGO

### APPLICATION

VOLKSWAGEN: PARATE 1.9D

NB80051

P.S.

1.THE LENGTH DOES NOT INCLUDE DUST COVER.

2.CW MEANS CLOCKWISE,CCW MEAS ANTICLOCKWISE.

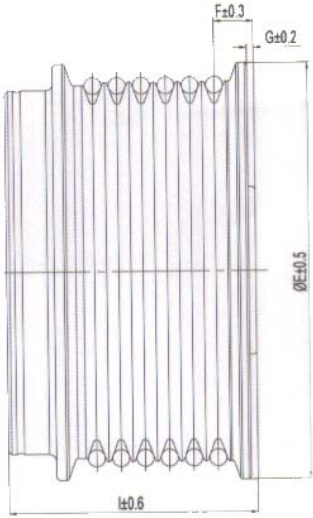
# ALTERNATOR PULLEY



## PARTS NO.

## PRODUCT INFO

## CROSSREFERENCE



No. of groove	6
Angle of groove	40
Out diameter	61
OD of groove:	55.5
Height	36.4
Distance between mandrel end & 1st teeth	5.8
Inner diameter	17
Depth of reference hole	7.7
Distance between mandrel & pulley end surface	1
Direction of rotation	CW
Screw	M16
Protetive Cap	Outside

INA: F225643.5 F225643.5  
 VALEO:  
 BOSCH:1126601549 1126601572  
 WAI 24-91252  
 HITACHI  
 VW  
 CARGO: 138807

### APPLICATION

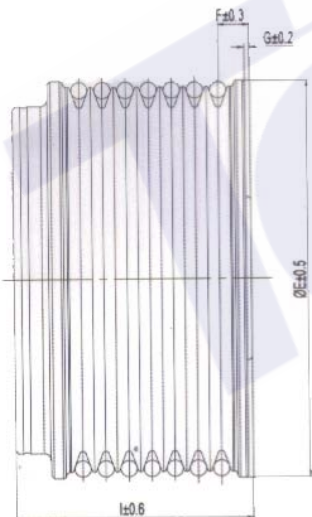
MERCRCDES-BENZ:  
 VITO(638)108D2.3  
 V-KLASSE/CLASS(638/2)  
 V230TD

NB80052

## PARTS NO.

## PRODUCT INFO

## CROSSREFERENCE



No. of groove	7
Angle of groove	40
Out diameter	61
OD of groove:	59.1
Height	36.6
Distance between mandrel end & 1st teeth	4.9
Inner diameter	17
Depth of reference hole	9
Distance between mandrel & pulley end surface	0.8
Direction of rotation	CW
Screw	M16
Protetive Cap	Outside

INA: 535007130  
 VALEO:  
 BOSCH: F00M991078 0124315019  
 WAI 24-91266  
 HITACHI  
 VW  
 CARGO

### APPLICATION

FORD TRANSIT  
 OPEL  
 VAUXHALL

NB80053

### P.S.

- 1.THE LENGTH DOES NOT INCLUDE DUST COVER.
- 2.CW MEANS CLOCKWISE,CCW MEAS ANTICLOCKWISE.

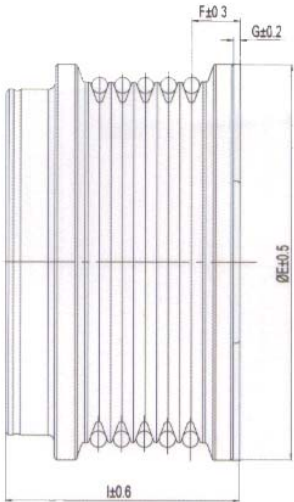
# ALTERNATOR PULLEY



## PARTS NO.

## PRODUCT INFO

## CROSSREFERENCE



No. of groove	5
Angle of groove	40
Out diameter	61
OD of groove:	55.8
Height	36.4
Distance between mandrel end & 1st teeth	7.5
Inner diameter	17
Depth of reference hole	17.3
Distance between mandrel & pulley end surface	1
Direction of rotation	CW
Screw	M16
Protetive Cap	Outside

INA: F-226322.4 F-226322.12  
 VALEO:  
 BOSCH: F00M992711 1126601567  
 WAI 24-91259  
 HITACHI  
 VW 058903119C 058903016D  
 CARGO

### APPLICATION

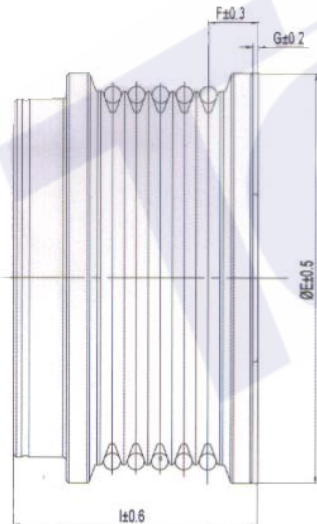
AUDI: A6 1.8 , 1.8T

NB80054

## PARTS NO.

## PRODUCT INFO

## CROSSREFERENCE



No. of groove	5
Angle of groove	40
Out diameter	61
OD of groove:	55.6
Height	36.4
Distance between mandrel end & 1st teeth	7.4
Inner diameter	17
Depth of reference hole	11.3
Distance between mandrel & pulley end surface	0.8
Direction of rotation	CW
Screw	M16
Protetive Cap	Outside

INA: 535000810  
 VALEO:  
 BOSCH: F00M991042 0124515025  
 WAI 24-91253  
 HITACHI  
 VW:038903119P 06B903016B  
 CARGO

### APPLICATION

AUDI:A4 1.6, 1.8, 1.8T  
 A6 1.8, 1.8T  
 SKODA: SUPERB(3U4)2.0  
 VOLKSWAGEN:  
 PASSAT 1.6,1.8T 20V,2.0

NB80055

### P.S.

1.THE LENGTH DOES NOT INCLUDE DUST COVER.

2.CW MEANS CLOCKWISE,CCW MEAS ANTICLOCKWISE.



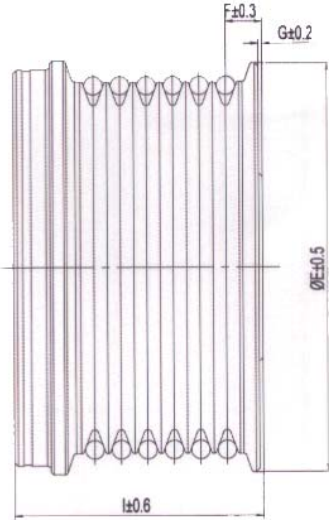
# ALTERNATOR PULLEY



## PARTS NO.

## PRODUCT INFO

## CROSSREFERENCE



No. of groove	6
Angle of groove	40
Out diameter	55
OD of groove:	49.9
Height	32.3
Distance between mandrel end & 1st teeth	14.7
Inner diameter	17
Depth of reference hole	8
Distance between mandrel & pulley end surface	0.3
Direction of rotation	CW
Screw	M16
Protetive Cap	Outside

INA: F-226962  
 VALEO:  
 BOSCH: F00M991134 0124325114  
 WAI  
 HITACHI: 24-91270  
 VW  
 CARGO

## APPLICATION

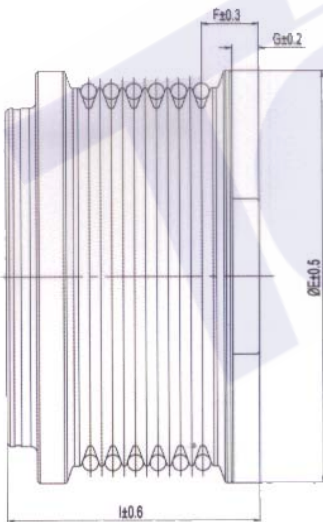
OPEL  
 CHREVROLET

NB80056

## PARTS NO.

## PRODUCT INFO

## CROSSREFERENCE



No. of groove	6
Angle of groove	40
Out diameter	65
OD of groove:	59.9
Height	40
Distance between mandrel end & 1st teeth	9
Inner diameter	17
Depth of reference hole	17.2
Distance between mandrel & pulley end surface	4.2
Direction of rotation	CW
Screw	M16
Protetive Cap	Outside

INA: f-229974 535001710  
 VALEO:  
 BOSCH:  
 WAI  
 HITACHI: 24-2279  
 VW  
 CARGO

## APPLICATION

MAZDA:  
 626 IV(GE,GV)2.5 24V  
 MPV II(LW)2.5V6  
 MERCEDES-BENZ:  
 PROBE II(ECP)2.5V6 24V  
 FORD  
 LINCOLN

NB80057

## P.S.

- 1.THE LENGTH DOES NOT INCLUDE DUST COVER.
- 2.CW MEANS CLOCKWISE,CCW MEAS ANTICLOCKWISE.



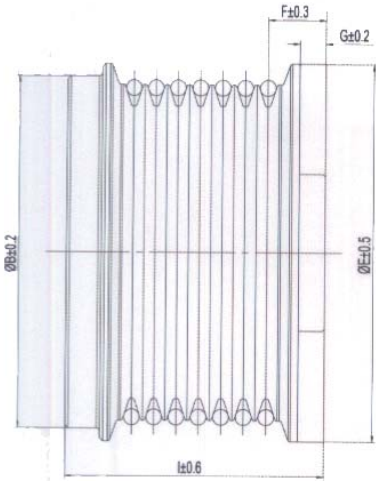
# ALTERNATOR PULLEY



## PARTS NO.

## PRODUCT INFO

## CROSSREFERENCE



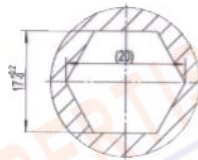
No. of groove	7
Angle of groove	36
Out diameter	59
OD of groove:	52.5
Height	41
Distance between mandrel end & 1st teeth	9.1
Inner diameter	17
Depth of reference hole	11
Distance between mandrel & pulley end surface	4.1
Direction of rotation	CW
Screw	M14
Protetive Cap	Intside

INA:  
 VALEO:  
 BOSCH: 24-82290-4  
 WAI  
 HITACHI  
 VW  
 CARGO

## APPLICATION

LEXUS  
 TOYOTA

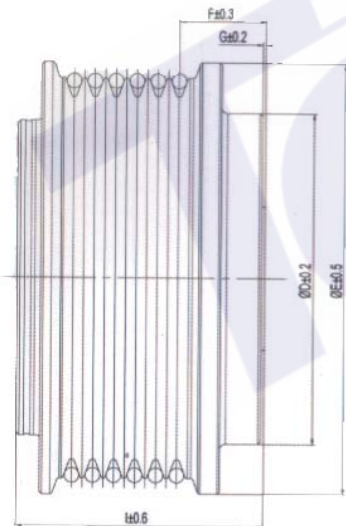
NB80058



## PARTS NO.

## PRODUCT INFO

## CROSSREFERENCE



No. of groove	6
Angle of groove	40
Out diameter	73
OD of groove:	67.8
Height	42.1
Distance between mandrel end & 1st teeth	14.7
Inner diameter	17
Depth of reference hole	11.9
Distance between mandrel & pulley end surface	0.5
Direction of rotation	CW
Screw	M16
Protetive Cap	Outside

INA: F-227820 53500521-  
 VALEO:  
 BOSCH: F00M061005,0123520014  
 WAI 24-91279  
 HITACHI  
 VW:021903 119H 021903119K  
 CARGO

## APPLICATION

VOLKSWAGEN:  
 LT28-35II 2.8TDI  
 LT28-46II 2.8TDI  
 TRANSPORTER IV 2.5TDI  
 VOLVO:  
 S360 2.5T,R2,5T,2.4D,2.4D5

NB80059

### P.S.

- 1.THE LENGTH DOES NOT INCLUDE DUST COVER.
- 2.CW MEANS CLOCKWISE,CCW MEAS ANTICLOCKWISE.

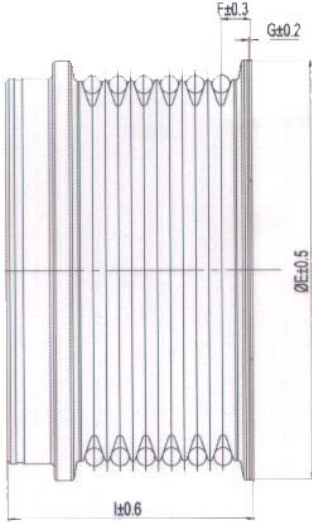
# ALTERNATOR PULLEY



## PARTS NO.

## PRODUCT INFO

## CROSSREFERENCE



No. of groove	6
Angle of groove	37
Out diameter	58
OD of groove:	52.6
Height	34
Distance between mandrel end & 1st teeth	4.3
Inner diameter	17
Depth of reference hole	11.3
Distance between mandrel & pulley end surface	0.3
Direction of rotation	CW
Screw	M16
Protetive Cap	Outside

INA: F-233525 535002510  
 VALEO:  
 BOSCH: F00M991105 0124515073  
 WAI 24-91103-3  
 HITACHI  
 VW  
 CARGO

### APPLICATION

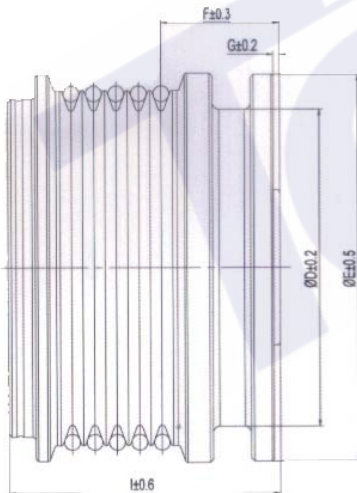
AUDI: A2  
 PORSCHE:  
 911(996) 3.4 CARRERA,3.6  
 TURBO 4  
 BOXSTER(996) 2.7,2.7 24V,S3.2

NB80060

## PARTS NO.

## PRODUCT INFO

## CROSSREFERENCE



No. of groove	5
Angle of groove	40
Out diameter	61
OD of groove:	56
Height	43
Distance between mandrel end & 1st teeth	18.7
Inner diameter	17
Depth of reference hole	16
Distance between mandrel & pulley end surface	1
Direction of rotation	CW
Screw	M16
Protetive Cap	Outside

INA: F-226556 535000910  
 VALEO:  
 BOSCH: 1126601556 0123320036  
 WAI: 24-91257  
 HITACHI  
 VW: 028903119S 028903026A  
 CARGO

### APPLICATION

SEAT  
 V.W

NB80062

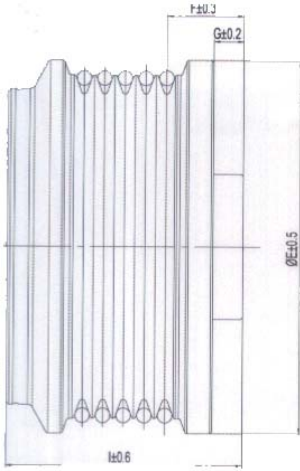
### P.S.

- 1.THE LENGTH DOES NOT INCLUDE DUST COVER.
- 2.CW MEANS CLOCKWISE,CCW MEAS ANTICLOCKWISE.

### PARTS NO.

### PRODUCT INFO

### CROSSREFERENCE



No. of groove	5
Angle of groove	40
Out diameter	63
OD of groove:	58
Height	40.7
Distance between mandrel end & 1st teeth	13.1
Inner diameter	17
Depth of reference hole	12
Distance between mandrel & pulley end surface	5.1
Direction of rotation	CW
Screw	M14
Protetive Cap	Outside

INA:  
 VALEO:  
 BOSCH:  
 WAI: 24-82230  
 HITACHI  
 VW  
 CARGO

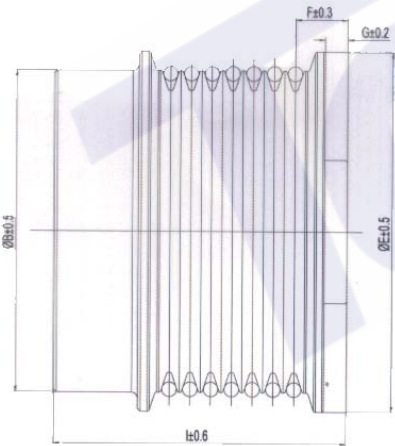
### APPLICATION

NB80064

### PARTS NO.

### PRODUCT INFO

### CROSSREFERENCE



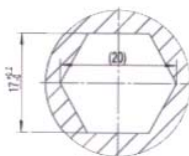
No. of groove	7
Angle of groove	37
Out diameter	61.5
OD of groove:	55
Height	50.2
Distance between mandrel end & 1st teeth	9
Inner diameter	17
Depth of reference hole	12.4
Distance between mandrel & pulley end surface	3.0
Direction of rotation	CW
Screw	M16
Protetive Cap	Intside

INA:  
 VALEO:  
 BOSCH:  
 WAI:24-82291-4  
 HITACHI  
 VW  
 CARGO

### APPLICATION

TOYOTA

NB80065



P.S.

- 1.THE LENGTH DOES NOT INCLUDE DUST COVER.
- 2.CW MEANS CLOCKWISE,CCW MEAS ANTICLOCKWISE.

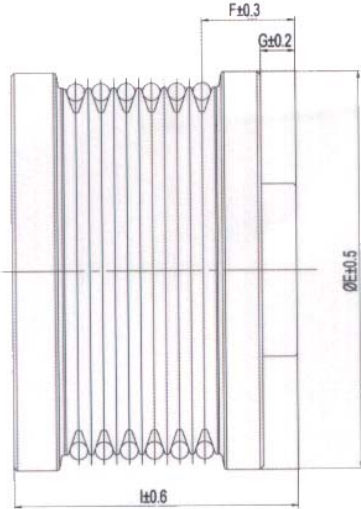
# ALTERNATOR PULLEY



## PARTS NO.

## PRODUCT INFO

## CROSSREFERENCE



No. of groove	6
Angle of groove	37
Out diameter	56.5
OD of groove:	52.1
Height	40.4
Distance between mandrel end & 1st teeth	13.2
Inner diameter	17
Depth of reference hole	11.3
Distance between mandrel & pulley end surface	4.9
Direction of rotation	CW
Screw	M16
Protetive CAP	Inside

INA: F-232288 535004410  
 VALEO:  
 BOSCH:  
 WAI  
 HITACHI  
 VW:24-81107-3  
 CARGO

### APPLICATION

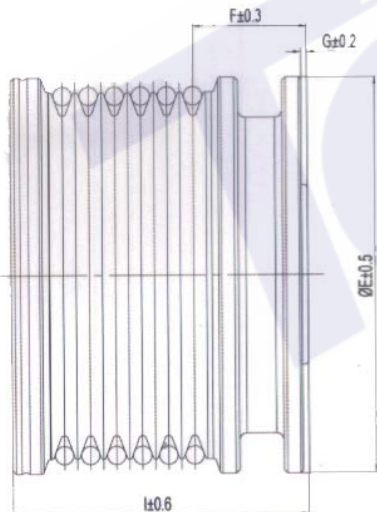
NISSAN:  
 NISSAN-ALTIMA(SEDAN)2.5 16V  
 NISSAN-SENTRA(SEDAN)2.5 16V  
 PRIMERA(P12,WP12)2.9  
 X-TRAIL(T30)2.0,2.5

NB80066

## PARTS NO.

## PRODUCT INFO

## CROSSREFERENCE



No. of groove	6
Angle of groove	40
Out diameter	54
OD of groove:	50
Height	40.4
Distance between mandrel end & 1st teeth	13.2
Inner diameter	17
Depth of reference hole	11.3
Distance between mandrel & pulley end surface	4.9
Direction of rotation	CW
Screw	M16
Protetive Cap	Outside

INA: F-233197 535005010  
 VALEO:  
 BOSCH: F00M991125 0124325029  
 WAI: 24-91265  
 HITACHI  
 VW  
 CARGO

### APPLICATION

DODGE SPRINTER  
 FREIGHTLINER SPRINTER  
 VAN 2.7L DIESEL  
 MERCEDSE-BENZ

NB80067

P.S.

1.THE LENGTH DOES NOT INCLUDE DUST COVER.

2.CW MEANS CLOCKWISE,CCW MEAS ANTICLOCKWISE.



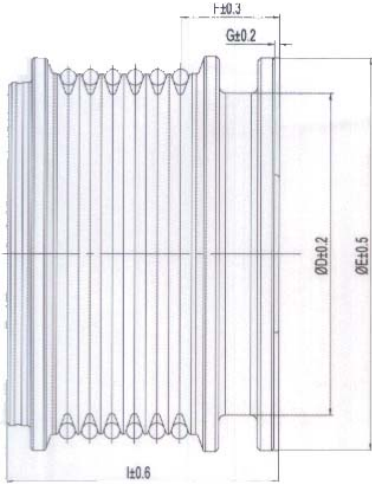
# ALTERNATOR PULLEY



## PARTS NO.

## PRODUCT INFO

## CROSSREFERENCE



No. of groove	6
Angle of groove	40
Out diameter	61
OD of groove:	56
Height	43
Distance between mandrel end & 1st teeth	15.5
Inner diameter	17
Depth of reference hole	8
Distance between mandrel & pulley end surface	0.8
Direction of rotation	CW
Screw	M16
Protetive Cap	Outside

INAF-225644 535000310:  
 VALEO:  
 BOSCH: 1126601568 0123320041  
 WAI: 24-91254  
 HITACHI  
 VW  
 CARGO

### APPLICATION

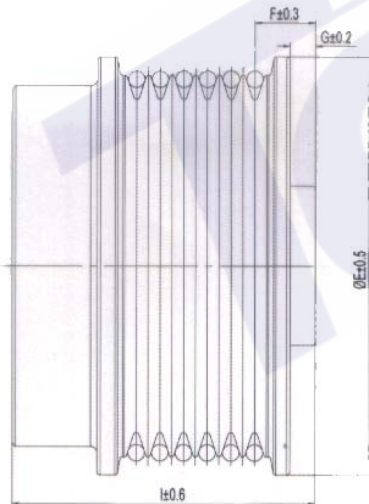
MERCEDES E CLASS DIESEL  
 MERCEDES SPRINTER

NB80068

## PARTS NO.

## PRODUCT INFO

## CROSSREFERENCE



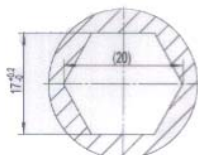
No. of groove	6
Angle of groove	36
Out diameter	63
OD of groove:	57.5
Height	45.2
Distance between mandrel end & 1st teeth	9.1
Inner diameter	17
Depth of reference hole	12
Distance between mandrel & pulley end surface	3.8
Direction of rotation	CW
Screw	M14
Protetive Cap	Intside

INA:  
 VALEO:  
 BOSCH:  
 WAI:24-82294-4  
 HITACHI  
 VW  
 CARGO

### APPLICATION

JEEP DIESEL

NB80069



### P.S.

- 1.THE LENGTH DOES NOT INCLUDE DUST COVER.
- 2.CW MEANS CLOCKWISE,CCW MEAS ANTICLOCKWISE.



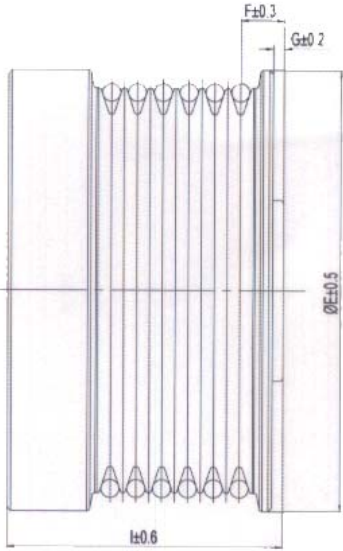
# ALTERNATOR PULLEY



## PARTS NO.

## PRODUCT INFO

## CROSSREFERENCE



No. of groove	6
Angle of groove	36
Out diameter	61
OD of groove:	56
Height	38
Distance between mandrel end & 1st teeth	5.97
Inner diameter	17
Depth of reference hole	8
Distance between mandrel & pulley end surface	1.48
Direction of rotation	CCW
Screw	M16LH
Protetive Cap	Intside

INA: F-553099  
 VALEO:  
 BOSCH: F00M991061 0124515019  
 WAI: 24-91104-3W  
 HITACHI  
 VW  
 CARGO

## APPLICATION

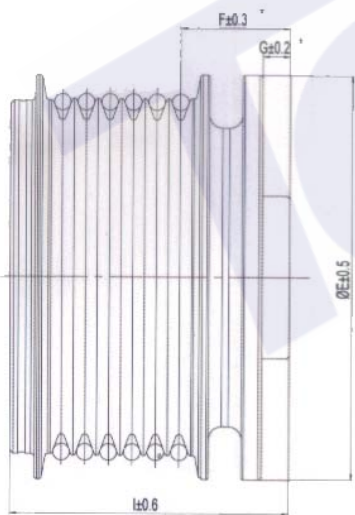
VOLVO

NB80070

## PARTS NO.

## PRODUCT INFO

## CROSSREFERENCE



No. of groove	6
Angle of groove	38
Out diameter	61
OD of groove:	53.8
Height	42.1
Distance between mandrel end & 1st teeth	16.54
Inner diameter	17
Depth of reference hole	11.3
Distance between mandrel & pulley end surface	4.14
Direction of rotation	CW
Screw	M14
Protetive Cap	Outside

INA: F-568861 535018110  
 VALEO:  
 BOSCH:  
 WAI  
 HITACHI  
 VW  
 CARGO

## APPLICATION

FORD FOCUS 1.6L,2.0L  
 MAZDA 3 1.6L  
 VOLVO C30 1.6L  
 VOLVO V50 2.0L

NB80072

P.S.

1.THE LENGTH DOES NOT INCLUDE DUST COVER.

2.CW MEANS CLOCKWISE,CCW MEAS ANTICLOCKWISE.

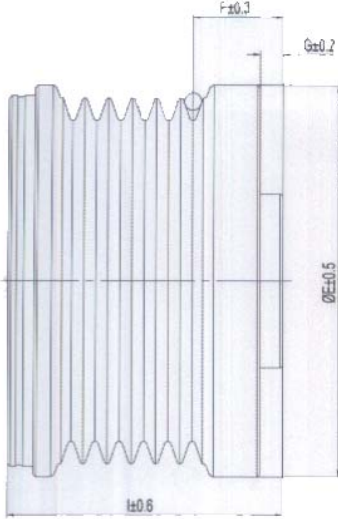
# ALTERNATOR PULLEY



## PARTS NO.

## PRODUCT INFO

## CROSSREFERENCE



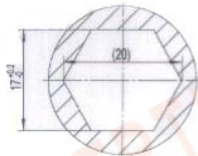
No. of groove	6
Angle of groove	40
Out diameter	56.4
OD of groove:	52.6
Height	40.6
Distance between mandrel end & 1st teeth	13.15
Inner diameter	17
Depth of reference hole	17
Distance between mandrel & pulley end surface	3.3
Direction of rotation	CW
Screw	M17
Protetive Cap	Outside

INA:  
 VALEO:  
 BOSCH:  
 WAI  
 HITACHI  
 VW  
 CARGO

## APPLICATION

NISSAN

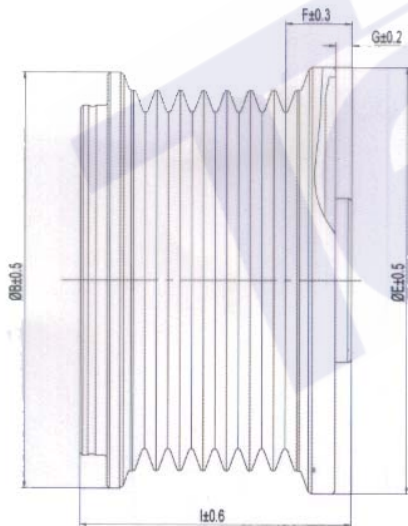
NB80073



## PARTS NO.

## PRODUCT INFO

## CROSSREFERENCE



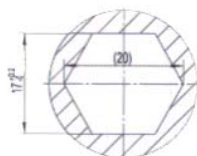
No. of groove	7
Angle of groove	40
Out diameter	65
OD of groove:	58
Height	41.3
Distance between mandrel end & 1st teeth	10.1
Inner diameter	15
Depth of reference hole	13
Distance between mandrel & pulley end surface	2.5
Direction of rotation	CW
Screw	M14
Protetive Cap	Outside

INA:  
 VALEO:  
 BOSCH:  
 WAI  
 HITACHI  
 VW  
 CARGO

## APPLICATION

NISSAN

NB80074



## P.S.

1. THE LENGTH DOES NOT INCLUDE DUST COVER.
2. CW MEANS CLOCKWISE, CCW MEAS ANTICLOCKWISE.

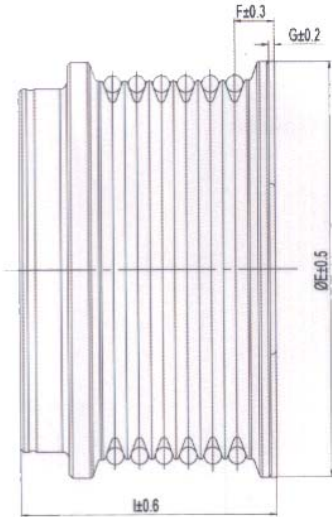
# ALTERNATOR PULLEY



## PARTS NO.

## PRODUCT INFO

## CROSSREFERENCE



No. of groove	6
Angle of groove	37
Out diameter	64
OD of groove:	58.7
Height	36.2
Distance between mandrel end & 1st teeth	7.87
Inner diameter	17
Depth of reference hole	11.3
Distance between mandrel & pulley end surface	0.84
Direction of rotation	CW
Screw	M16
Protetive Cap	Outside

INA: F-554766.01 535016010  
 VALEO:  
 BOSCH: F00M391120 0121615002  
 WAI: 24-91321-3W  
 HITACHI  
 VW  
 CARGO

## APPLICATION

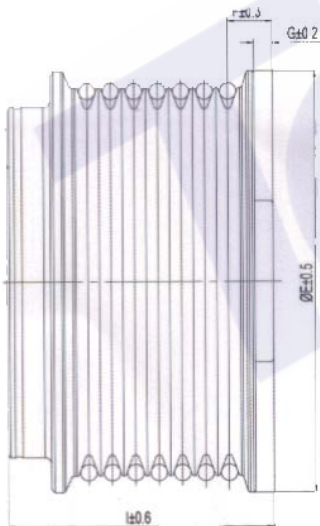
CITROEN: JUMPER 2.2HDI  
 100,2.2HDI 120  
 FIAT: DUCATO(250) 100  
 MULTIJET 2.2D  
 FORD:  
 TRANSIT 2.2TDCI  
 TRANSIT TOURNEO 2.2TDCI  
 PEUGEOT: BOXER 2.2HDI  
 100,2.2HDI 120

NB80076

## PARTS NO.

## PRODUCT INFO

## CROSSREFERENCE



No. of groove	7
Angle of groove	40
Out diameter	64
OD of groove:	59
Height	40.5
Distance between mandrel end & 1st teeth	6.8
Inner diameter	17
Depth of reference hole	11.3
Distance between mandrel & pulley end surface	2.8
Direction of rotation	CW
Screw	M16
Protetive Cap	Outside

INA: F-228751 535005310  
 VALEO:  
 BOSCH:  
 WAI: 24-81109  
 HITACHI: LR170-761B LR190-752  
 VW  
 CARGO

## APPLICATION

NISSAN:  
 PATROL GR11(Y61)3.0DTI  
 TERRANO II(R20)3.0DI

NB80077

### P.S.

1. THE LENGTH DOES NOT INCLUDE DUST COVER.
2. CW MEANS CLOCKWISE, CCW MEAS ANTICLOCKWISE.

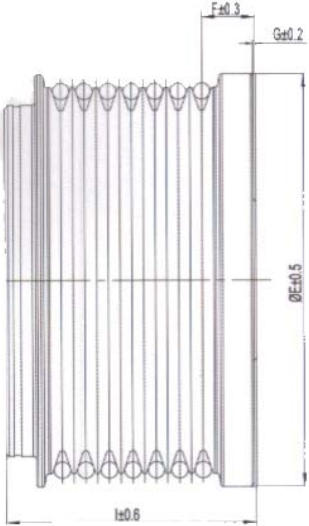
# ALTERNATOR PULLEY



## PARTS NO.

## PRODUCT INFO

## CROSSREFERENCE



No. of groove	7
Angle of groove	37
Out diameter	61
OD of groove:	58.6
Height	38.1
Distance between mandrel end & 1st teeth	8.18
Inner diameter	17
Depth of reference hole	11.3
Distance between mandrel & pulley end surface	0.45
Direction of rotation	CW
Screw	M16
Protetive Cap	Outside

INA: F-556174.01  
 VALEO:  
 BOSCH: F00M349878 0121615003  
 WAI: 24-91307-3  
 HITACHI  
 VW  
 CARGO

## APPLICATION

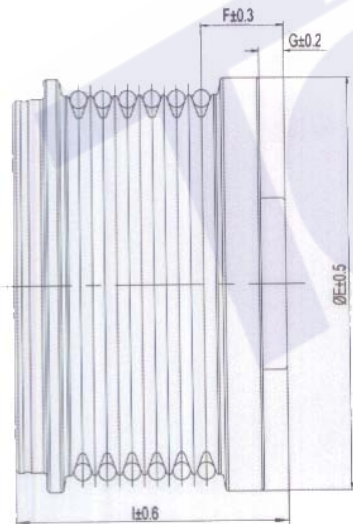
Ford:  
 Transit 2.4l, 3.2l  
 Landrover defender 2.4l

NB80078

## PARTS NO.

## PRODUCT INFO

## CROSSREFERENCE



No. of groove	6
Angle of groove	40
Out diameter	59
OD of groove:	54.1
Height	39.2
Distance between mandrel end & 1st teeth	11.84
Inner diameter	17
Depth of reference hole	17.3
Distance between mandrel & pulley end surface	3.47
Direction of rotation	CW
Screw	M16
Protetive Cap	Outside

INA: F-556614 535009010  
 VALEO: 4702068  
 BOSCH:  
 WAI: 24-2284-3  
 HITACHI  
 VW  
 CARGO

## APPLICATION

FORD:  
 FIESTA 1.4

NB80079

P.S.

1.THE LENGTH DOES NOT INCLUDE DUST COVER.

2.CW MEANS CLOCKWISE,CCW MEAS ANTICLOCKWISE.



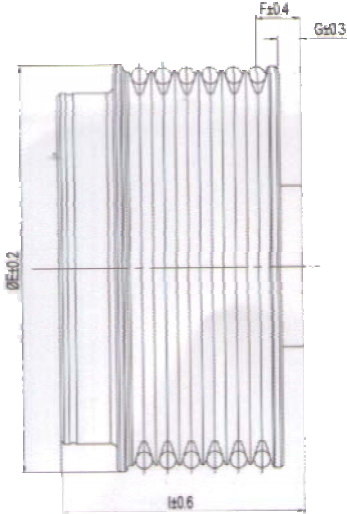
# ALTERNATOR PULLEY

RoHS CE UL ISO9001:2000

## PARTS NO.

## PRODUCT INFO

## CROSSREFERENCE



No. of groove	6
Angle of groove	37
Out diameter	61
OD of groove:	60
Height	36.9
Distance between mandrel end & 1st teeth	6.6
Inner diameter	17
Depth of reference hole	12.5
Distance between mandrel & pulley end surface	3.4
Direction of rotation	CW
Screw	M16
Protetive Cap	Outside

INA:  
 VALEO:  
 BOSCH:  
 WAI  
 HITACHI  
 VW  
 CARGO

## APPLICATION

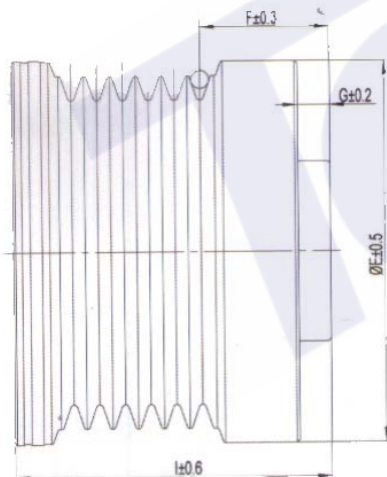
CHERY 2.0TCI 1.9D

NB80082

## PARTS NO.

## PRODUCT INFO

## CROSSREFERENCE



No. of groove	6
Angle of groove	37
Out diameter	53
OD of groove:	49
Height	44
Distance between mandrel end & 1st teeth	18
Inner diameter	17
Depth of reference hole	12
Distance between mandrel & pulley end surface	4.5
Direction of rotation	CW
Screw	M14
Protetive Cap	Outside

INA:  
 VALEO: 4702068  
 BOSCH:  
 WAI  
 HITACHI  
 VW  
 CARGO

## APPLICATION

OPEL  
 VOLKSWAGENL

Nb80083

P.S.

1.THE LENGTH DOES NOT INCLUDE DUST COVER.

2.CW MEANS CLOCKWISE,CCW MEAS ANTICLOCKWISE.



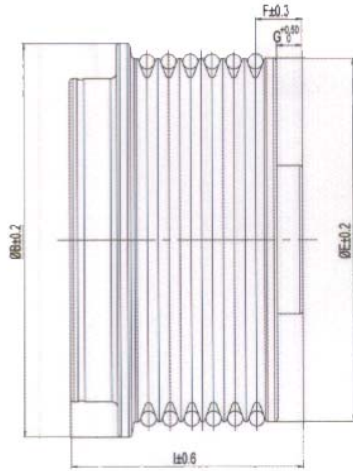
# ALTERNATOR PULLEY

RoHS COMPLIANCE CE UL ISO9001:2000

## PARTS NO.

## PRODUCT INFO

## CROSSREFERENCE



No. of groove	6
Angle of groove	40
Out diameter	60
OD of groove:	60
Height	38.25
Distance between mandrel end & 1st teeth	7.7
Inner diameter	17
Depth of reference hole	13.75
Distance between mandrel & pulley end surface	4.25
Direction of rotation	CW
Screw	M16
Protetive Cap	Outside

INA:  
 VALEO: 2612800  
 BOSCH:  
 WAI  
 HITACHI  
 VW  
 CARGO

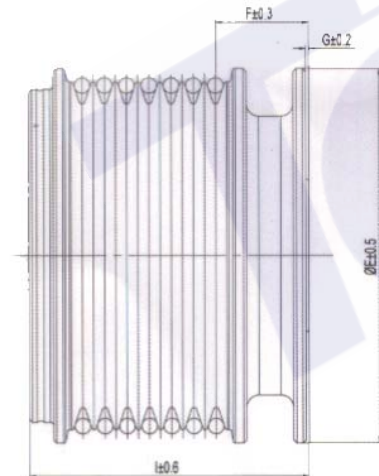
## APPLICATION

NB80084

## PARTS NO.

## PRODUCT INFO

## CROSSREFERENCE



No. of groove	7
Angle of groove	37
Out diameter	60
OD of groove:	55.7
Height	44.8
Distance between mandrel end & 1st teeth	14.9
Inner diameter	17
Depth of reference hole	11.3
Distance between mandrel & pulley end surface	3.47
Direction of rotation	CW
Screw	M16
Protetive Cap	Outside

INA: F232001.06 535004210  
 VALEO: 439471 SG12B062  
 BOSCH:F00M991138 0124515062  
 WAI: 24-91282-3W  
 HITACHI  
 VW  
 CARGO

## APPLICATION

MERCEDES-BENZ:  
 CLK(A/C209)  
 200 COMPRESSOR,  
 200 CGI COMPRESSOR  
 E-KLASSE/CLASS(S/W211)  
 E200 COMPRESSOR  
 SLK(R171)200 COMPRESSOR  
 KOMPRESSOR

Nb80085

### P.S.

- 1.THE LENGTH DOES NOT INCLUDE DUST COVER.
- 2.CW MEANS CLOCKWISE,CCW MEAS ANTICLOCKWISE.

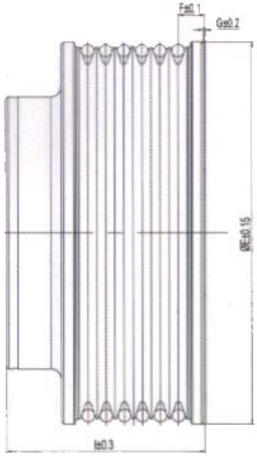
# ALTERNATOR PULLEY

RoHS COMPLIANCE CE UL ISO9001:2000

## PARTS NO.

## PRODUCT INFO

## CROSSREFERENCE



No. of groove	6
Angle of groove	39
Out diameter	79
OD of groove:	73.88
Height	39.3
Distance between mandrel end & 1st teeth	5.34
Inner diameter	15.488
Depth of reference hole	16
Distance between mandrel & pulley end surface	0.3
Direction of rotation	CW
Screw	M14
Protetive Cap	Outside

INA:  
 VALEO:  
 BOSCH:  
 WAI  
 HITACHI  
 VW  
 CARGO

## APPLICATION

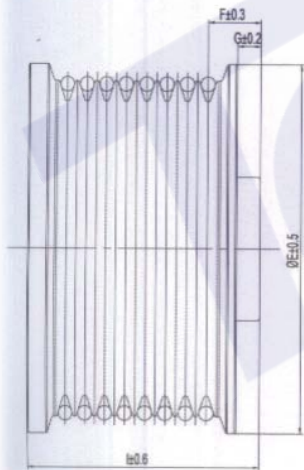
CHERY

Nb80086

## PARTS NO.

## PRODUCT INFO

## CROSSREFERENCE

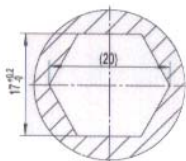


No. of groove	8
Angle of groove	37
Out diameter	63
OD of groove:	57.3
Height	39
Distance between mandrel end & 1st teeth	9.1
Inner diameter	17
Depth of reference hole	12.4
Distance between mandrel & pulley end surface	4
Direction of rotation	CW
Screw	M14
Protetive Cap	Inside

INA:  
 VALEO:  
 BOSCH:  
 WAI: 24-82302  
 HITACHI  
 VW  
 CARGO

## APPLICATION

NB80087



## P.S.

- 1.THE LENGTH DOES NOT INCLUDE DUST COVER.
- 2.CW MEANS CLOCKWISE,CCW MEAS ANTICLOCKWISE.

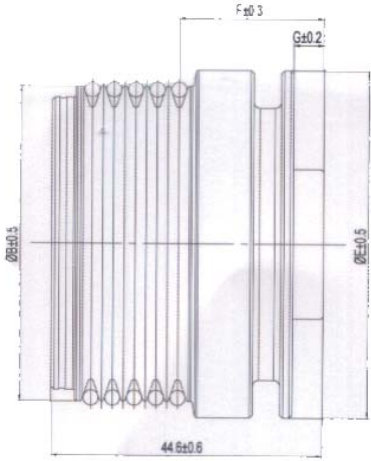
# ALTERNATOR PULLEY



## PARTS NO.

## PRODUCT INFO

## CROSSREFERENCE



No. of groove	5
Angle of groove	37
Out diameter	57
OD of groove:	51.7
Height	44.5
Distance between mandrel end & 1st teeth	23.8
Inner diameter	17
Depth of reference hole	16
Distance between mandrel & pulley end surface	5
Direction of rotation	CW
Screw	M16
Protetive Cap	Outside

INA: F-230759 535002010  
 VALEO: 2547737 593493  
 BOSCH: 1661550215  
 WAI: 24-94257  
 HITACHI  
 VW  
 CARGO

## APPLICATION

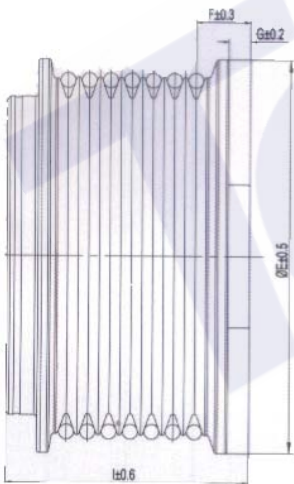
MERCEDES A CLASS

NB80088

## PARTS NO.

## PRODUCT INFO

## CROSSREFERENCE

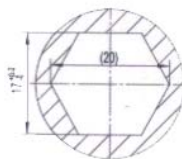


No. of groove	7
Angle of groove	38
Out diameter	66
OD of groove:	60
Height	42.1
Distance between mandrel end & 1st teeth	9.1
Inner diameter	17
Depth of reference hole	14
Distance between mandrel & pulley end surface	3.6
Direction of rotation	CW
Screw	M14
Protetive Cap	Outside

INA:  
 VALEO:  
 BOSCH:  
 WAI: 24-82311  
 HITACHI  
 VW  
 CARGO

## APPLICATION

NB80089



## P.S.

- 1.THE LENGTH DOES NOT INCLUDE DUST COVER.
- 2.CW MEANS CLOCKWISE,CCW MEAS ANTICLOCKWISE.

