

Table of Contents
 产品索引



A	Battery Switch 电瓶电源开关	
	1. Marine Switch 游艇类	01-04
	2. Automotive Switch 汽车类	05-06
	3. Cut Off Switch 断电开关类	07-10
B	Battery Cable 电瓶电源线	
	1. Battery Starter Cable 启动电源线类	12-15
	2. Battery Isolator 电源分配器类	16
	3. Terminal lugs Boots 端子, 护套类	17-18
C	Battery Terminal 蓄电池接头	
	1. OE Battery Terminal 蓄电池接头	20-21
	2. Brass battery terminal 铜蓄电池接头	22-30
	3. Zinc battery terminal 锌蓄电池接头	31-36
	4. Lead battery terminal 铅蓄电池接头	37-38
D	Booster Cable 应急电源线	
	1. Booster Cable 应急电源线	40-41
	2. Battery Clamp 鳄鱼电瓶夹	42-43
E	Battery Accessories 电瓶附件	
	1. Battery Case 电瓶箱	44
	2. Battery Accessories 电瓶附件	44



Battery Switch 电瓶开关



RoHS
compliant

Contour Battery Master Switch A701 游艇电源开关

1. The A701 Contour Battery Master Switch offers a number unique features, it can be locked with other switch by a device part. Can be either surface or recess mounted by cutting a 2.1"(52mm) hole.

1. A701是一款经典型游艇电源开关,有很多独一无二的性能,两个产品可通过一个小片连接在一起,顶部安装孔大小为21寸(52mm)。

2. Features a control knob (different label choice) which can be removed by switching to a counter-clockwise 45° position.

2. 旋转45度时,可轻易取下旋钮,另外可定做不同的旋钮商标。

3. Three removable side plates on sides for access of up to 1/0 cables plus a rear cover insulating the rear terminals against any short circuits. This ensures the switch meets ABYC requirements.

3. 在4个方向预留接口,配3个活动盖板用于不接线的3个方向;接线最大尺寸1/0(70平方),接线端子必须带热收缩管以防止短路。这个产品符合ACYC要求。



A701
Contour Battery Master Switch

Battery Selector Switch 701S 电源分配开关

1. The A701S is the most compact selector switch available on the market. Housed in the same dimensions as the A701, and includes the same removable side plates and back cover.

1. A701S外形尺寸同A701,是一款市场上最流行的电源分配开关。

2. While we recommend isolated battery systems as outlined with our distribution clusters, the A701S offers a simple economical way of separating tow batteries.

2. 如果客人配置电源分配器, A701S 是一款性价比最高的首选产品。

3. Please note selector switches will not separate electronics from harmful engine starting spikes.

3. A701S 不是一款切断总电源开关,要注意使用。



RoHS
compliant

701S
Battery Selector Switch



Main Technical Data/ 主要技术数据

型号 Item	尺寸 Size (mm)	工作电流 Continue(Amp)	屈服电流 Crank (Amp)	电压 Voltage (V DC)	功能 Operation	连接尺寸 Stud size(mm)
A701	68x68x75	275(12V)	1250(12V)	12-48	ON/OFF	2x3/8"
A701S	68x68x75	275(12V)	1250(12V)	12-48	1-2-both-off	2x3/16"

Notes: If voltage is 24V, the Amp will reduce 50%. 如果电压增加1倍,工作电流降低50%。



Battery Switch 电瓶开关系列



RoHS
compliant



Table of Contents/ 产品索引

1. Marine Switch/游艇类
2. Automotive Switch/汽车类
3. Cut off Switch/断电开关类

Battery Switch 电瓶开关



A701-PM
Panel Mounted Switch



A701S-PM
Panel Mounted Switch



Panel-Mounted Switch A701-PM, A701S-PM 游艇电源开关(操控板型)

The A701-PM Panel-Mounted Switch offers a number unique features, designed specifically for panel mount applications. This range gives a very compact, versatile solution.

A701-PM型游艇电源开关是一款专门装配在操控板上的开关, 有很多独一无二的性能:

1. Compact, Lightweight, Removable key on 701-PM, Countersunk recesses for surface mount application.
1. 紧凑性, 轻便性, 旋钮可卸性, 外形正好卡在操控板上。
2. Full access for cables-no restrictions, Standard 2-1/16" (52mm) hole cut out.
2. 可以360度接线, 不受限制: 孔径: 2-1/16" (52mm)。
3. Features a control knob(different label choice) which can be removed by switching to a counter-clockwise 45° position.
3. 旋转45度时, 可轻易取下旋钮, 另可根据客户要求旋钮上做不同的商标。
4. A701S-PM is same function with A701S, also include above features.
4. A701S-PM 电源分配开关与A701S功能相同。

Heavy-duty Battery Switch 游艇电源开关(重型)

The A720 Heavy duty Battery Switch fits into the same contour lock system as used on the battery distribution system. Rated at 600A continuous and 2500 cranking. It is well suitable for larger vessels. As with the 701, the 720 can be recessed or surface mounted, The 720 uses the same style of self cleaning sliding contact as used in the 701 and used the same label sheet.

A720游艇电源开关(重型)外观同A701一样简洁大方, 且易于安装。这是一款用在大型游艇上的开关, 不间断电流600A, 屈服电流2500A。另外它的商标可与A701是互换的。



A720/A720S
Heavy-duty Battery Switch Heavy-duty Battery Switch



Main Technical Data/ 主要技术数据

型号 Item	尺寸 Size (mm)	工作电流 Continue(Amp)	屈服电流 Crank (Amp)	电压 Voltage (V DC)	功能 Operation	连接尺寸 Stud size(mm)
A701-PM	69x69x67	275(12V)	1250(12V)	12-48	ON/OFF	2x5/16"
A701S-PM	69x69x67	275(12V)	1250(12V)	12-48	1-2-both-off	2x5/16"
A720	102x102x90	600(12V)	2500(12V)	12-48	ON/OFF	2x3/8"
A720S	102x102x90	600(12V)	2500(12V)	12-48	1-2-both-off	2x3/8"

Notes: If voltage is 24V, the Amp will reduce 50%. 如果电压增加1倍, 工作电流降低50%。

Battery Switch 电瓶开关



A1201
Contour Battery Master Switch



A1201S
Contour Battery Master Switch



Contour Battery Master Switch 游艇电源开关

1. The A1201 A1201S Contour Battery Master Switch offers a number unique features. Can be either surface or recess mounted by cutting a 2.1"(52mm) hole.

1.A1201, A1201S是一款经典型游艇电源开关, 有很多独一无二的性能, 顶部安装孔大小为21寸(52mm)。

2. Features a control knob (different label choice) which can be removed by switching to a counter-clockwise 45° position.

2. 旋转45度时, 可轻易取下旋钮, 另外可定做不同的旋钮商标。

3. Three removable side plates on sides for access of up to 1/0 cables plus a rear cover insulating the rear terminals against any short circuits. This ensures the switch meets ABYC requirements.

3. 在4个方向预留接线口, 配3个活动盖板用于不接线的3个方向: 接线最大尺寸1/0(70平方), 接线端子必须带热收缩管以防止短路。这个产品符合ACYC要求。

Contour Battery Master Switch 游艇电源开关

1. The A1202S A1203S Contour Battery Master Switch offers a number unique features. Can be either surface or recess mounted by cutting a 2.1"(52mm) hole.

1.A1202S, A1203S是一款经典型游艇电源开关, 有很多独一无二的性能, 顶部安装孔大小为21寸(52mm)。

2. Three removable side plates on sides for access of up to 1/0 cables plus a rear cover insulating the rear terminals against any short circuits. This ensures the switch meets ABYC requirements.

2. 接线最大尺寸1/0(70平方), 接线端子必须带热收缩管以防止短路。这个产品符合ACYC要求。



A1202S
Contour Battery Master Switch



A1203S
Contour Battery Master Switch



Main Technical Data/ 主要技术数据

型号 Item	尺寸 Size (mm)	工作电流 Continue(Amp)	屈服电流 Crank (Amp)	电压 Voltage (V DC)	功能 Operation	连接尺寸 Stud size(mm)
A1201	68x68x75	275(12V)	1250(12V)	12-48	ON/OFF	2x5/16"
A1201S	68x68x75	275(12V)	1250(12V)	12-48	1-2-both-off	2x5/16"
A1202S	/	275(12V)	1250(12V)	12-48	1-2-both-off	2x5/16"
A1203S	68x68x75	275(12V)	1250(12V)	12-48	1-2-both-off	2x5/16"

Notes: If voltage is 24V, the Amp will reduce 50%. 如果电压增加1倍, 工作电流降低50%。

Battery Switch 电瓶开关



A801
Battery Switch

Battery Switch A801/A802 A801/A802 游艇电源开关

The A801/A802 Battery Switch offers a number unique features, designed specifically for GM small truck. This range gives a very compact, versatile solution.

A801/A802 具有很多独一无二的特点，专为小卡车而设计。

1. Compact, Lightweight, Removable key on A801/A802, easy mount application.
1. 紧凑性, 轻便性, 旋扭可卸性, 外形正好卡在安装板上。
2. Inside, all conducting part use Copper.
2. 内部所有的导电配置材料都是紫铜。
3. Features a control knob which can be removed by switching, then put the cover on top of them to protect the dusting coming in.
3. 旋转45度时, 可轻易取下旋钮, 上面带一个黑色防尘盖。
4. A801 is same function with A802, A801 with 2 installing holes, and A802 with 4 installing holes.
4. A801电源开关和A802的功能相同, A801有2个安装孔, A802有4个安装孔。

Battery Selector Switch A803/A804 A803/A804 电源开关(双重型)

The A803 Heavy duty Battery Switch fits into the same contour lock system as used on the battery distribution system, also with additional function, with a small rate battery switch. It is well suitable for double switch request.

A803电源开关(重型)外观同A801一样简洁大方, 且易于安装。这是一款可同时控制两个电源的开关。一个为主电源开关, 另一个小电源开关。



A804
Battery Selector Switch

A803
Battery Selector Switch

Main Technical Data/ 主要技术数据

型号 Item	工作电流 Continue	屈服电流 Crank	电压 Voltage	工作温度 Woking temperature	安装尺寸及软管 Installing sizes and hoses	型号代码 OE NO:	操作 Operation
A801	200A(12V)	1000A(12V)	12-24V	40-80°C	40mm/2	JK453	ON/OFF
A802	200A(12V)	1000A(12V)	12-24V	40-80°C	40mm/4	JK453	ON/OFF
A803	200A(12V)	1000A(12V)	12-24V	40-80°C	40mm/4	/	ON/OFF
A804	125A(12V)	1000A(12V)	12-24V	40-80°C	40mm/4	/	ON/OFF

Battery Switch 电瓶开关



A804
Battery Selector Switch

A805
Battery Selector Switch

Battery Switch A804/A805 A804/A805 电源开关

The A804/A805 Battery Switch offers a number unique features, designed specifically for GM small truck. This range gives a very compact, versatile solution.

A801/A802电源开关是一款专门为通用卡车设计的电源开关, 有很多独一无二的性能:

1. Compact, Lightweight, stable key on A805/A806, easy mount application.
1. 紧凑性, 轻便性, 操控性, 外形正好卡在安装板上。
2. Inside, all conducting part use Copper.
2. 内部所有的导电配置材料都是紫铜。
3. Features a control knob with spring inside, easy to operate.
3. 旋扭带弹簧, 操控性非常强。
4. A804 is same function with A805.
4. A804与A805性能完全相同, 仅外观存在区别。

Heavy duty Battery Switch A806 A806 电源开关(重力型)

The A806 Heavy duty Battery Switch fits into the same contour lock system as used on the battery distribution system, with a 45° angle operating pin and a dust protecting cover.

A806电源开关(双重型)外形大方, 简洁, 且安装方便, 自带一个45度的操作杆, 和挂锁及防尘盖。



A806
Heavy Duty Battery Switch

A807
Heavy Duty Battery Switch

Main Technical Data/ 主要技术数据

型号 Item	工作电流 Continue	屈服电流 Crank	电压 Voltage	工作温度 Woking temperature	安装尺寸及软管 Installing sizes and hoses	型号代码 OE NO:	操作 Operation
A804	200A	1000A	12-24V	-40-80°C	40mm/2	E9341915060	ON/OFF
A805	200A	1000A	12-24V	-40-80°C	40mm/4	34130021	ON/OFF
A806	200A	1000A	12-24V	-40-80°C	40mm/4	34002003	ON/OFF
A807	200A	1000A	12-24V	-40-80°C	40mm/4	34002003	ON/OFF

Battery Switch 电瓶开关



A901
Battery Switch

A902
Battery Switch

Battery Switch A901/A902
A901/A902 电源开关(高级)

The A901/A902 Battery Switch fits top post Batteries.
A901 / A902电源开关是适用于上面带正负桩头的蓄电池。

1. Manufactured of copper-zinc plated steel and brass.
1. 由黄铜和镀黄铜钢制成。
2. Fits side post batteries with standard post adapters.
2. 适用于“top”和“side”型(加一个配置器)的电瓶夹。
3. Attach to battery terminal by clamping down on the cap, lift cap to remove from battery terminal.
3. 按下电源开通, 拉起电源断开。
4. RoHS Compliant, Fits 4 to 6 gauge wires.
4. 环保认证, 可接AWG4-6号线。



Battery Switch A903/A904
A903/A904 电源开关(高级)

The A903/A904 Battery Switch fits top post Batteries.
A903 / A904电源开关是适用于上面带正负桩头的蓄电池。

1. Manufactured of zinc and painting.
1. 由锌合金喷漆制成
2. Fits side post batteries with standard post adapters.
2. 适用于“top”和“side”型(加一个配置器)的电瓶夹。
3. Attach to battery terminal by clamping down on the cap, lift cap to remove from battery terminal.
3. 按下电源开通, 拉起电源断开。
4. RoHS Compliant, Fits 4 to 6 gauge wires.
4. 环保认证, 可接AWG4-6号线。



A903
Battery Switch

A904
Battery Switch

Main Technical Data/ 主要技术数据

型号 Item	工作电流 Continue rate	屈服电流 Crank rate	电压 Voltage	直径 Diameter	电缆尺寸 Cable Size	颜色 Color
A901	430A	1000A	12-24V	19mm /Positive	4-6AWG	■ RED
A902	430A	1000A	12-24V	17.5mm /Negative	4-6AWG	■ BLUE/BLACK
A903	430A	1000A	12-24V	19mm /Positive	4-6AWG	■ RED
A904	430A	1000A	12-24V	17.5mm /Negative	4-6AWG	■ BLACK

Battery Switch 电瓶开关



A1001
Knife-blade Switch

Knife-blade Switch A1001, A1002
A1001/A1002 闸刀开关

The A1001/A1002 knife-blade switches, This range gives a very compact, versatile solution.

A1001/A1002是一款专门装配在操控板上的闸刀开关, 有很多独一无二的性能:

1. Mount on negative battery post, Disconnect batteries quickly and easily.
1. 装在负极蓄电池上, 开和关非常简便。
2. Stop unwanted battery drain, Help prevent theft, tampering and unauthorized use.
2. 防止不必要的跑电, 以及避免未经允许的使用。
3. Improve safety and security of stored vehicles, RVs and seasonal equipment.
3. 改善汽车, 保证水上工具和家庭大型设备安全。



A1002
Knife-blade Switch

Main Technical Data/ 主要技术数据

型号 Item	工作电流 Continue rate	屈服电流 Crank rate	电压 Voltage	直径 Diameter	电缆尺寸 Cable Size	颜色 Color
A1001	250A	750A	12-24V	3/8	4-6AWG	■ BLACK
A1002	250A	750A	12-24V	17.5mm /Negative	4-6AWG	■ RED

Battery Switch 电瓶开关



56-00026
Battery Switch

Battery Switch 56-00026, 56-00028
56-00026/56-00028 电瓶开关

All our Compact Battery Switches feature:
小型电源开关特性:

1. Easy to install on negative battery post.
1. 非常简便的装在负极蓄电池头上。
2. Battery is disconnected by unscrewing the knob a few turns, and reconnected by tightening the knob.
2. 松开就是断电，旋紧就可以导电。
3. Knob can be removed completely to deter theft.
3. 将绿色螺帽旋下可防止偷窃。
4. Compact size fits most battery compartments. Rated 500 amps surge and 125 amps continuous at 12 volts.
4. 适合大多数电瓶,在12V条件下,持续电流125A,瞬间电流500A。
5. Add a 15 amp fused bypass that maintains computer settings, radio, clock, etc., while battery is disconnected.
5. 配上一个15amp的旁路保险丝,可在汽车开关断开时,保证汽车电脑系统,警报,车锁等元器件供电。



56-00025
Battery Switch

Knob Color
按钮颜色



Red

Black

Green

Main Technical Data/ 主要技术数据

型号 Item	工作电流 Continue rate	屈服电流 Crank rate	电压 Voltage	直径 Diameter	电缆尺寸 Cable Size	颜色 Color
56-00026	125A	500A	12-24V	17.5mm /Negative	4-6AWG	Green, Black, Red
56-00025	125A	500A	12-24V	12.5mm /Negative	4-6AWG	Green, Black, Red

Battery Switch 电瓶开关



56-00027
Battery Switch

Battery Switch 56-00027, 56-00029
56-00027/56-00029 电瓶开关

All our Compact Battery Switches feature:
所有小型电源开关的特性:

1. Easy to install on negative battery post.
1. 简易地安装在蓄电池负极柱头上。
2. Battery is disconnected by unscrewing the knob a few turns, and reconnected by tightening the knob.
2. 松开就是断电，旋紧就可以导电。
3. Knob can be removed completely to deter theft.
3. 将绿色螺帽旋下可防止偷窃。
4. Compact size fits most battery compartments. Rated 500 amps surge and 125 amps continuous at 12 volts.
4. 适合大多数电瓶,在12V条件下,持续电流125A,瞬间电流500A。
5. Add a 15 amp fused bypass that maintains computer settings, radio, clock, etc., while battery is disconnected.
5. 配上一个15amp的旁路保险丝,可在汽车开关断开时,保证汽车电脑系统,警报,车锁等元器件供电。

Knob Color
按钮颜色



Red

Black

Green



56-00028
Battery Switch

Main Technical Data/ 主要技术数据

型号 Item	工作电流 Continue rate	屈服电流 Crank rate	电压 Voltage	直径 Diameter	电缆尺寸 Cable Size	旋钮颜色 Knob Color
56-00027	125A	500A	12-24V	17.5mm /Negative	4-6AWG	Green, Black, Red
56-00028	125A	500A	12-24V	17.5mm /Negative	4-6AWG	Green, Black, Red

Battery Cable 电瓶电源线

Solid brass battery terminal
高质量的铜端子



Long life polyolefin heat shrink.
高级热收缩管



High grade fuel acid, and chemical resistant insulation.
耐油, 酸, 及其它化学质量电线。

Cable and terminal crimped at 30 ton
用30吨压力压

Battery to Starter 电瓶-马达线

1. Quality cables manufactured to the highest standard.
1. 按最高标准生产。
2. A full range of high quality, oxygen-free copper, cable from 14mm to 95mm.
2. 全系列采用紫铜线, 规格:14mm-95mm.
3. Crimped at 10 to 30 ton depending on cable gauge. High quality insulation and heat shrink.
3. 根据线径的大小, 锁紧压力从10-30ton, 高质量热收缩管。



Master Battery to Starter/ 电瓶-马达线



Switch To Starter/ 开关-马达线

长度 Length		线规	线规
cm	inch	AWG0/2(65mm ²)	AWG2(mm ²)
30	12	BC12-00	BC12-2
38	15	BC15-00	BC15-2
46	18	BC18-00	BC18-2
61	24	BC24-00	BC24-2
76	30	BC30-00	BC30-2
91	36	BC36-00	BC36-2
106	42	BC42-00	BC42-2
122	48	BC48-00	BC48-2
153	60	-	BC60-2

长度 Length		线规	线规
cm	inch	AWG0/2(65mm ²)	AWG2(mm ²)
30	12	SS12-00	SS12-2
38	15	SS15-00	SS15-2
46	18	SS18-00	SS18-2
61	24	SS24-00	SS24-2
76	30		SS30-2
91	36	SS36-00	SS36-2
100			
106	42		SS42-2
122	48	SS48-00	SS48-2



Battery Joiner/ 电瓶-并联线

长度 Length		线规	线规
cm	inch	AWG0/2(65mm ²)	AWG2(mm ²)
23	9	SW9-00	SW9-2
25	10	SW10-00	SW10-2
30	12	SW12-00	SW12-2
38	15		SW15-2
46	18	SW18-00	SW18-2
15	6		SW6-2
20	8	SW8-00	SW8-2



Braided Copper Earth Strap/ 接地线

长度 Length		线规	线规
cm	inch	AWG0/2(65mm ²)	AWG2(mm ²)
15	6	ES6-00	ES6-2
20	8	ES8-00	ES8-2
25	10	ES10-00	ES10-2
30	12	ES12-00	ES12-2
38	15	ES15-00	ES15-2
46	18	ES18-00	ES18-2
61	24	ES24-00	ES24-2



B



Battery Cable

电瓶电源线系列

Table of Contents/ 产品索引

1. Battery Starter Cable/ 启动电源线类
2. Terminal lugs Boots / 端子, 护套类
3. Battery Isolator/ 电源分配器类



Battery Cable 电瓶电源线



1. Quality cables manufactured to the highest standard.
1. 最高标准的质量要求
2. Good conductivity, and good to resist corrosion and other harsh contaminants.
2. 导电性好防腐性强及抗脏能力。
3. We make custom battery cables per your specification, long or short, small or big size etc.
3. 我们可以根据客人要求做不同的尺寸和规格。

6 Gauge/6号线

型号 Part No	描述 Description	小线数 Leads	颜色 Color	长度 (Inch)
SC610	Standard	-	Red	10"
SC614	Standard	-	Red	14"
SC615	Standard	-	Red	15"
SC617	Standard	-	Red	17"
SC619	Standard	-	Red	19"
SC619R	Standard	1	Red	19"
SC620	Standard	-	Red	20"
SC624	Standard	-	Red	24"
SC625R	Standard	1	Red	25"
SC627	Standard	-	Red	27"
SC631	Standard	-	Red	31"
SC632R	Standard	1	Red	32"
SC634	Standard	-	Red	34"
SC638	Standard	-	Red	38"
SC638R	Standard	1	Red	38"
SC642	Standard	-	Red	42"
SC642R	Standard	1	Red	42"
SC648	Standard	-	Red	48"
SC648R	Standard	1	Red	48"
SC651R	Standard	1	Red	51"
SC653	Standard	-	Red	53"
SC654R	Standard	1	Red	54"
SC665R	Standard	1	Red	65"

Top Terminal Battery Cables
"TOP"型电瓶马达线

4 Gauge/4号线

型号 Part No	描述 Description	小线数 Leads	颜色 Color	长度 (INCH)
SC409	Standard	-	Red	9"
SC412	Standard	-	Red	12"
SC412R	Standard	1	Red	12"
SC415	Standard	-	Red	15"
SC417	Standard	-	Red	17"
SC420	Standard	-	Red	20"
SC420DR	Standard	1	Red	20"
SC425	Standard	-	Red	25"
SC425R	Standard	1	Red	25"
SC427	Standard	-	Red	27"
SC432	Standard	-	Red	32"
SC432R	Standard	1	Red	32"
SC434	Standard	-	Red	34"
SC434DR	Standard	2	Red	34"
SC438	Standard	-	Red	38"
SC438DR	Standard	2	Red	38"
SC438R	Standard	1	Red	38"

2 Gauge/2号线

型号 Part No	描述 Description	小线数 Leads	颜色 Color	长度 (Inch)
SC210	Standard	-	Black	10"
SC220	Standard	-	Black	20"
SC220R	Standard	1	Black	20"
SC225	Standard	-	Black	25"
SC225R	Standard	1	Black	25"
SC227	Standard	-	Black	27"
SC232	Standard	-	Black	32"
SC232R	Standard	1	Black	32"
SC234	Standard	-	Black	34"
SC238	Standard	-	Black	38"
SC238R	Standard	1	Black	38"
SC242	Standard	-	Black	42"
SC242R	Standard	1	Black	42"
SC248	Standard	-	Black	48"
SC248R	Standard	1	Black	48"
SC254	Standard	-	Black	54"
SC254R	Standard	1	Black	54"
SC258	Standard	-	Black	58"
SC258R	Standard	1	Black	58"
SC265	Standard	-	Black	65"
SC265R	Standard	1	Black	65"
SC272	Standard	-	Black	72"
SC272R	Standard	1	Black	72"

Battery Cable 电瓶电源线



4 Gauge/4号线

型号 Part No	描述 Description	小线数 Leads	颜色 Color	长度 (Inch)
ST220	Standard	-	Black	20"
ST225W	Premium	1	Black	25"
ST230	Standard	-	Black	30"
ST235W	Premium	1	Black	35"
ST240	Standard	-	Black	40"
ST245W	Premium	1	Black	45"
ST250	Standard	-	Black	50"
ST255	Standard	-	Black	55"
ST255W	Premium	1	Black	55"
ST260	Standard	-	Black	60"
ST265	Standard	-	Black	65"
ST265W	Premium	1	Black	65"
ST275	Standard	-	Black	75"
ST280	Standard	-	Black	80"
ST290	Standard	-	Black	90"

Side Terminal Battery Cables
"SIDE" 型电瓶线

1. It is injection molded terminal ends with OEM side terminal bolts.
1. 使用模具压铸的端子和OEM的螺栓。
2. Is manufactured to meet General Motors (GM) and SAE J1127 specifications.
2. 端子根据通用汽车和SAE J1127 标准制作。

6 Gauge/6号线

型号 Part No	描述 Description	小线数 Leads	颜色 Color	长度 (INCH)
ST625	Standard	1	Red	25"
ST635	Standard	1	Red	35"

4 Gauge/4号线

型号 Part No	描述 Description	小线数 Leads	颜色 Color	长度 (Inch)
ST420	Standard	-	Red	20"
ST425	Standard	-	Red	25"
ST425W	Premium	1	Black	25"
ST430	Standard	-	Red	30"
ST435	Standard	-	Red	35"
ST435W	Premium	1	Black	35"
ST440	Standard	-	Red	40"
ST445	Standard	-	Red	45"
ST445W	Premium	1	Black	45"
ST450	Standard	-	Red	50"
ST455	Standard	-	Red	55"
ST455W	Premium	1	Black	55"
ST465	Standard	-	Red	65"
ST465W	Premium	1	Black	65"



Harness Repair Splice 线束桥接线



Harness Repair Splice A88 线束桥接线

Quick Connect Battery Harness Repair Splice
用于桥接电瓶和整车线束。

1. For fast convenient replacement of hard to reach cables.
1. 更换非常方便
2. Replaces corroded portion, not the entire cable.
2. 不需要换整根线, 只需要换掉腐蚀部分
3. Ideal for automotive, truck, and farm applications.
3. 适用于, 卡车, 及农用车
4. RoHS compliant
4. RoHS 认证

Main Technical Data/ 主要技术数据

型号 Item	线规 Gauge	型号 Type	大线/中线 Aux.wire Gauge/color	Master Carton外箱		颜色 Color
				Quantity数量	Weight重量	
A8859	4	Lug-Dual	12/Blk	5	4 lbs.	Black
A8863	4	Side-Dual	12/Blk	5	4 lbs.	Black
A8864	4	Top-Dual	12/Blk	5	4 lbs.	Black
A8865	4	Top	12/Blk,10/Red	5	3 lbs.	Black
A8866	4	Side	12/Blk,10/Red	5	3 lbs.	Black
A8867	4	Top	10/Blk,8/Red	5	3 lbs.	Black
A8868	4	Side	10/Blk,8/Red	5	3 lbs.	Black
A8869	4	Lug	12/Blk,10/Red	5	3 lbs.	Black



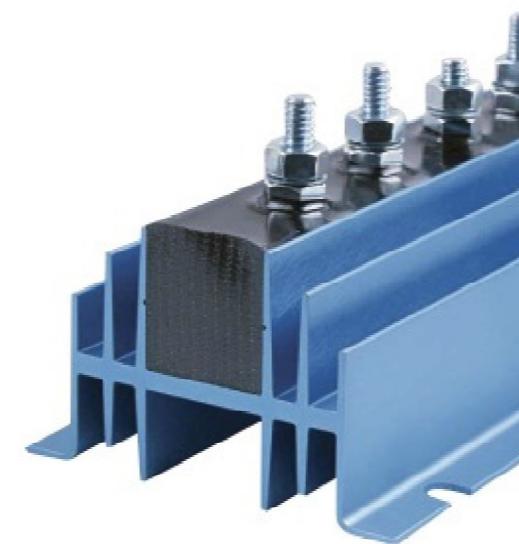
Jumper Cable A900/A1000 应急线

1. Cup and Pin Jumpers are designed to link multiple batteries to allow simultaneous charging of batteries.
1. 这两种电瓶线可为多个电瓶并联充电且操作简单。
2. Suitable for multiple battery types. Ideal for battery manufactures and distributors.
2. 该电瓶线非常适合电瓶工厂、经销商使用。
3. Features: Pin/cup style made from Zinc alloy.
3. 环保锌合金制造。

12 Gauge/ 12号线

型号 Part No.	描述 Description	小线数 Leads	颜色 Color	长度 Length
A900	Cup Jumper	1	Black	15"
A1000	Pin Jumper	1	Black	15"

Battery Isolator 电瓶分配线



Battery Isolator 电瓶阻隔器

Battery Isolator 电瓶分配器

1. Automatically isolates the starting battery from the auxiliary battery, protect the starting battery drainout.
1. 能自动把启动电瓶和娱乐电瓶分开, 防止启动电瓶过度放电。
2. Suitable for 4x4, Marine, Truck, Caravan and camping applications.
2. 适用于4x4, 游艇, 货车, 野外餐车等等。
3. No need to modify vehicle wiring.
3. 不需要改动主机的线路。
4. Kit contains all components required to complete the job.
4. 配备所有的附件。
5. Voltage sensitive relay rated at 140amps.
5. 电压传感器能承载电流140amps.
6. Proven reliability over many years, easy to install.
6. 经久耐用安装简便。



Anderson Plugs 安德森接头

1. Impact resistant polycarbonate housing and silver plated copper terminals.
1. 高强度、耐碰撞聚碳酸酯塑料外壳和镀锡紫铜端子。
2. Operating temperature -20°C to 105°C.
2. 操作温度: -20°C - 105°C。

Main Technical Data/ 主要技术数据

	型号 Part No.	线规 Cable size	安培 Amp rating
Complete unite	A2350	8mm ²	50Amp
Cover	A2350-1		
Complete unite	A2360	35mm ²	175Amp
Cover	A2360-1		
Handle	A2360-2		
Complete unite	A2370	65mm ²	350Amp
Cover	A2370-1		
Handle	A2370-2		

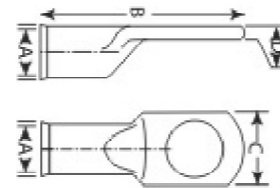


Anderson plugs 安德森接头

Standard Copper Lugs 标准紫铜端子



**Standard Copper Lugs
标准铜端子**



Main Technical Data/ 主要技术数据

型号 Part No.	线规 Gauge	尺寸 Size	A	B	C	D
LT810	8	#10	0.19"	1.20"	0.46"	0.07"
LT825	8	1/4"	0.19"	1.20"	0.46"	0.07"
LT831	8	5/16"	0.19"	1.20"	0.46"	0.07"
LT838	8	3/8"	0.19"	1.34"	0.62"	0.07"
LT850	8	1/2"	0.19"	1.50"	0.76"	0.07"
LT610	6	#10	0.24"	1.30"	0.46"	0.08"
LT625	6	1/4"	0.24"	1.30"	0.46"	0.08"
LT631	6	5/16"	0.24"	1.30"	0.46"	0.08"
LT638	6	3/8"	0.24"	1.41"	0.63"	0.08"
LT650	6	1/2"	0.24"	1.55"	0.77"	0.08"
LT410	4	#10	0.29"	1.50"	0.55"	0.08"
LT425	4	1/4"	0.29"	1.50"	0.55"	0.08"
LT431	4	5/16"	0.29"	1.50"	0.55"	0.08"
LT438	4	3/8"	0.29"	1.50"	0.55"	0.08"
LT450	4	1/2"	0.29"	1.70"	0.78"	0.08"
LT210	2	#10	0.34"	1.71"	0.66"	0.10"
LT225	2	1/4"	0.34"	1.71"	0.66"	0.10"
LT231	2	5/16"	0.34"	1.71"	0.66"	0.10"
LT238	2	3/8"	0.34"	1.71"	0.66"	0.10"
LT250	2	1/2"	0.34"	1.71"	0.77"	0.10"
LT125	1	1/4"	0.36"	1.73"	0.66"	0.10"
LT131	1	5/16"	0.36"	1.73"	0.66"	0.10"
LT138	1	3/8"	0.36"	1.73"	0.66"	0.10"
LT150	1	1/2"	0.36"	1.75"	0.77"	0.10"
LT1025	1/0	1/4"	0.42"	1.85"	0.75"	0.11"
LT1031	1/0	5/16"	0.42"	1.85"	0.75"	0.11"
LT1038	1/0	3/8"	0.42"	1.85"	0.75"	0.11"
LT1050	1/0	1/2"	0.42"	1.85"	0.75"	0.11"
LT2025	2/0	1/4"	0.46"	2.08"	0.82"	0.12"
LT2031	2/0	5/16"	0.46"	2.08"	0.82"	0.12"
LT2038	2/0	3/8"	0.46"	2.08"	0.82"	0.12"
LT2050	2/0	1/2"	0.46"	2.08"	0.82"	0.12"
LT3025	3/0	1/4"	0.51"	2.18"	0.90"	0.13"
LT3031	3/0	5/16"	0.51"	2.18"	0.90"	0.13"
LT3038	3/0	3/8"	0.51"	2.18"	0.90"	0.13"
LT3050	3/0	1/2"	0.51"	2.18"	0.90"	0.13"
LT4025	4/0	1/4"	0.56"	2.40"	1.00"	0.13"
LT4031	4/0	5/16"	0.56"	2.40"	1.00"	0.13"
LT4038	4/0	3/8"	0.56"	2.40"	1.00"	0.13"
LT4050	4/0	1/2"	0.56"	2.40"	1.00"	0.13"
LT25038	250MCM	3/8"	0.69"	2.65"	1.20"	0.13"
LT25050	250MCM	1/2"	0.69"	2.65"	1.20"	0.13"
LT25058	250MCM	5/8"	0.69"	2.05"	1.20"	0.13"

Standard copper lugs are made from seamless bare copper tubing. Ideal for grounding connections, battery cables and general wiring purposes.

标准紫铜端子是用无缝紫铜管做成，主要用于接地线，电瓶线及其它用途电线。

1. Electro-tin plated for resistance to corrosion.
1. 高耐腐蚀镀锡处理。
2. Bell shaped end for easy cable entry.
2. 尾端是喇叭口设计，防线容易。
3. Stamped lettering- for easy wire size and stud hole identification.
3. 清晰的刻字以便认清电线，清晰的线规，螺栓孔标识。
4. Seamless copper tubing.
4. 无缝紫铜管。
5. Meets SAE conductivity standards J163 AND J1811.
5. 符合J163和J1811的导电标准。
6. RoHS compliant.
6. 符合环保认证。

**Heavy Duty LUG LT999
重型端子**



Terminal Insulator Guards 电瓶头防护套



**Terminal Boot PVC
电瓶头防护套**

1. Terminal Insulator Guards are made from a tough, high temperature Polyvinyl Chloride (PVC) compound rate at 90°C.
1. 用PVC制成的电瓶头防护套，可耐温90°C。
2. Insulator Guards protect against accidental shorting of ungrounded battery terminals, and protect terminals from dirt dust and foreign objects.
2. 电瓶头防护套可防止电瓶短路，以及防灰尘和其它脏东西。
3. PVC compound is self extinguishing and meets V-94-V2 flammability rating, meets SAE J 1128 dielectric specification.
3. PVC 材料符合V-94-V2和 SAE J1128 标准。



Main Technical Data/ 主要技术数据

型号 Part No.	正极 Positive	负极 Negative	颜色 Color	应用 Application
TB001	Positive		■ Red	
TB002		Negative	■ Black	
TB003	Positive		■ Red	
TB004		Negative	■ Black	
TB005	Positive		■ Red	
TB006		Negative	■ Black	
TB007	Positive		■ Red	
TB008		Negative	■ Black	
TB009	Positive		■ Red	
TB010		Negative	■ Black	
TB011	Positive		■ Red	
TB012		Negative	■ Black	
TB013	Positive		■ Red	
TB014		Negative	■ Black	
TB015	Positive		■ Red	
TB016		Negative	■ Black	



Battery Terminal 蓄电池接头

T001>>

ROHS
compliant



T002>>

ROHS
compliant



T003>>

ROHS
compliant



T004>>

ROHS
compliant



OE Battery Terminal
主机厂-蓄电池接头

OE

H59
After Battery Terminal

Main Technical Data/ 主要技术数据

型号 Part No.	曾用名 Used name	材料 Material	表面处理 Body C.	螺栓处理 Bolt C.	适用电线 mm'	尺寸 Size	备注 Note
T001	150676601	H59	Blasting	/	/	19	RoHS
T002	160676301	H59	Blasting	/	/	19	RoHS
T003	-	H62	Blasting	/	35-50	17.5	RoHS
T004	-	H59	Blasting	/	50-70	19	RoHS

Battery Terminal

蓄电池接头系列

Table of Contents/ 产品索引

1. OE Battery Terminal / 蓄电池接头
2. Brass battery terminal/ 铜蓄电池接头
3. Zinc battery terminal/ 锌蓄电池接头
4. Lead battery terminal/ 铅蓄电池接头

Battery Terminal 蓄电池接头



OE Battery Terminal
主机厂-蓄电池接头 **OE**

H62
OE Battery Terminal

Main Technical Data/ 主要技术数据

型号 Part No.	曾用名 Used name	材料 Material	表面处理 Body C.	螺栓处理 Bolt C.	适用电线 mm ²	尺寸 Size	备注 Note
TP005 +	/	H62	Tin C.	Zinc C.	35-50	19	RoHS
TP005 -	/	H62	Tin C.	Zinc C.	35-50	17.5	RoHS
TP006 +	铜皮端子	H62	Dark Tin	Dark Tin	50	19	RoHS
TP006 -	/	H62	Dark Tin	Dark Tin	50	17.5	RoHS
TP007 +	铜皮端子	H62	Dark Tin	Dark Tin	35	19	RoHS
TP007 -	/	H62	Dark Tin	Dark Tin	35	17.5	RoHS
TP008 +	铜皮端子	H62	Tin C.	Zinc C.	35-50	19	RoHS
TP008 -	/	H62	Tin C.	Zinc C.	35-50	17.5	RoHS

Brass Battery Terminal 黄铜蓄电池接头

Brass Battery Terminal
黄铜蓄电池接头

H59
Brass Battery Terminal

Main Technical Data/ 主要技术数据

型号 Part No.	曾用名 Used name	表面处理 Body C.	螺栓处理 Bolt C.	适用电线 mm ²	尺寸 Size
T009 +	1506100	Blasting	Zinc C.	35-50	19
T009 -	1506110	Blasting	Zinc C.	35-50	17.5
T010 +	1506120	Blasting	Zinc C.	35-50	19
T010 -	1506130	Blasting	Zinc C.	35-50	17.5
T011 +	1506270	Blasting	Zinc C.	35-50	19
T011 -	1506280	Blasting	Zinc C.	35-50	17.5



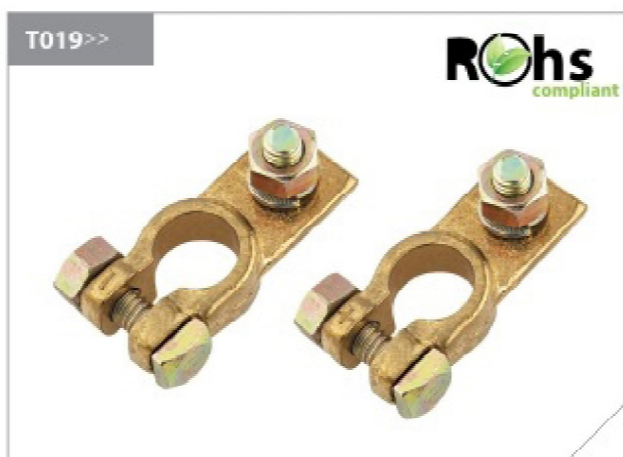
H59
Brass Battery Terminal

Main Technical Data/ 主要技术数据

型号 Part No.	曾用名 Used name	表面处理 Body C.	螺栓处理 Bolt C.	适用电线 mm ²	尺寸 Size
T012 +	/	Blasting	Yellow Zinc C.	35	19
T012 -	/	Blasting	Yellow Zinc C.	35	17.5
T013 +	/	Blasting	Yellow Zinc C.	50	19
T013 -	/	Blasting	Yellow Zinc C.	50	17.5
T014 +	/	Polishing	Yellow Zinc C.	75	19
T014 -	/	Polishing	Yellow Zinc C.	75	17.5
T015 +	/	Polishing	Yellow Zinc C.	90	19
T015 -	/	Polishing	Yellow Zinc C.	90	17.5



Brass Battery Terminal 黄铜蓄电池接头



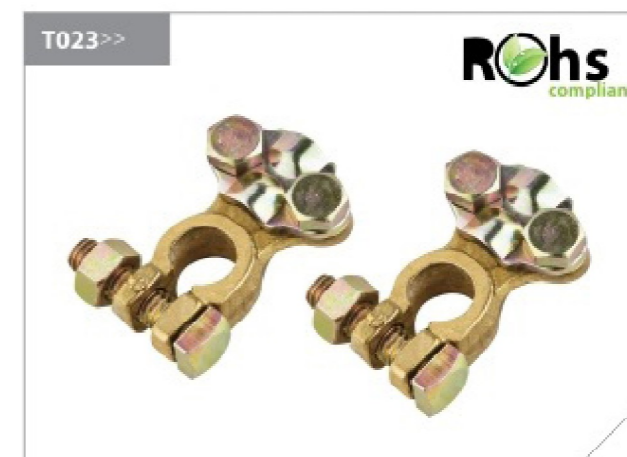
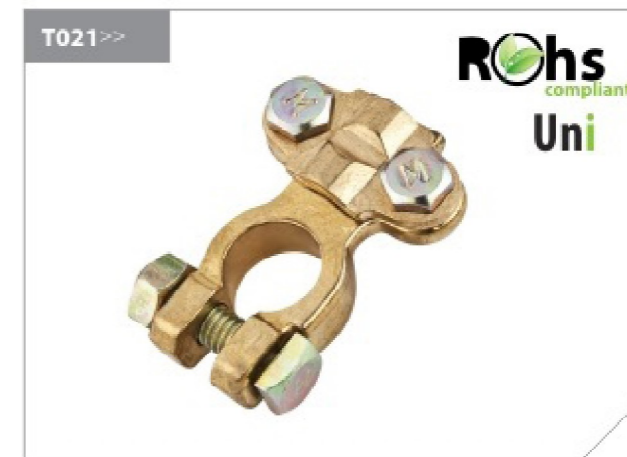
Brass Battery Terminal
黄铜蓄电池接头

H59
Brass Battery Terminal

Main Technical Data/ 主要技术数据

型号 Part No.	曾用名 Used name	材料 Material	螺栓处理 Bolt C.	适用电线 mm'	尺寸 Size	备注 Note
T016 +	MA142 +	H59	Yellow Zinc C.	50-90	19	RoHS
T016 -	MA142 -	H59	Yellow Zinc C.	50-90	17.5	RoHS
T017 +	MA14HD +	H59	SS	50-90	19	RoHS
T017 -	MA14HD -	H59	SS	50-90	17.5	RoHS
T018 +	MA14 +	H59	Painting	35-50	19	RoHS
T018 -	MA14 -	H59	Painting	35-50	17.5	RoHS
T019 +	MA100 +	H59	Yellow Zinc C.	35-50	19	RoHS
T019 -	MA100 -	H59	Yellow Zinc C.	35-50	17.5	RoHS

Brass Battery Terminal 黄铜蓄电池接头



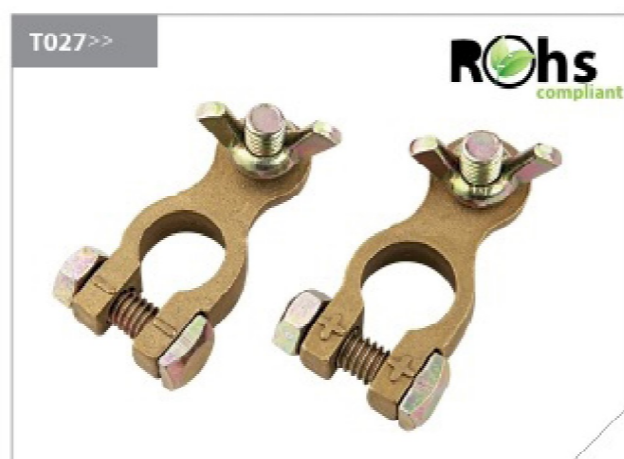
Brass Battery Terminal
黄铜蓄电池接头

H59
Brass Battery Terminal

Main Technical Data/ 主要技术数据

型号 Part No.	曾用名 Used name	材料 Material	表面处理 Body C.	螺栓处理 Bolt C.	适用电线 mm'	尺寸 Size	备注 Note
T020	MA11	H59	Polishing	Yellow Zinc C.	35-50	18.2	Uni
T021	MA11HD	H59	Polishing	Yellow Zinc C.	50-90	18.2	Uni
T022 +	MA32 +	H59	Polishing	Yellow Zinc C.	35-50	17.5	
T022 -	MA32 -	H59	Polishing	Yellow Zinc C.	35-50	19	
T023 +	MA36ST +	H59	Polishing	Yellow Zinc C.	35-50	11.5	Japan, Korea
T023 -	MA36ST -	H59	Polishing	Yellow Zinc C.	35-50	13	Japan, Korea

Brass Battery Terminal 黄铜蓄电池接头



Brass Battery Terminal
黄铜蓄电池接头

H59
Brass Battery Terminal

Main Technical Data/ 主要技术数据

型号 Part No.	曾用名 Used name	材料 Material	表面处理 Body C.	螺栓处理 Bolt C.	适用电线 mm'	尺寸 Size	备注 Note
T024	-	H59	Golden painting	Golden painting	35-50	18.2	USA
T025+	音响类	H59	Golden painting	Golden painting	35-50	19	Forging
T025-	-	H59	Golden painting	Golden painting	35-50	17.5	Forging
T026+	音响类	H59	Golden painting	Golden painting	35-50	19	Forging
T026-	-	H59	Golden painting	Golden painting	35-50	17.5	Forging
T027+	-	H59	Blasting	Yellow zinc painting	35-50	19	USA
T027-	-	H59	Blasting	Yellow zinc painting	35-50	17.5	USA

Brass Battery Terminal 黄铜蓄电池接头



Brass Battery Terminal
黄铜蓄电池接头

H59
Brass Battery Terminal

Main Technical Data/ 主要技术数据

型号 Part No.	曾用名 Used name	材料 Material	表面处理 Body C.	螺栓处理 Bolt C.	适用电线 mm'	尺寸 Size	备注 Note
T028+	Rac.	H59	Dark Tin C.	Dark Tin C.	35-50	19	RoHS
T028-	-	H59	Dark Tin C.	Dark Tin C.	35-50	17.5	RoHS
T029+	BT5	H59	Dark Tin C.	Dark Tin C.	35	19	9mm
T029-	BT6	H59	Dark Tin C.	Dark Tin C.	35	17.5	9mm
T030+	BT7	H59	Dark Tin C.	Dark Tin C.	50	19	11mm
T030-	BT8	H59	Dark Tin C.	Dark Tin C.	50	17.5	11mm
T031+	BT20	H59	Dark Tin C.	Dark Tin C.	75-90	19	14mm
T031-	BT21	H59	Dark Tin C.	Dark Tin C.	75-90	17.5	14mm
T032+	M.S	H59	Dark Tin C.	Dark Tin C.	35-50	19	Two cable
T032-	-	H59	Dark Tin C.	Dark Tin C.	35-50	17.5	Two cable
T033+	Rac.	H59	Dark Tin C.	Dark Tin C.	35-50	19	Multi Fun.
T033-	-	H59	Dark Tin C.	Dark Tin C.	35-50	17.5	Multi Fun.

Brass Battery Terminal 黄铜蓄电池接头

T035/T035>>



T036>>



T037>>



T038>>



**Brass Battery Terminal
黄铜蓄电池接头**

H59
Brass Battery Terminal

Main Technical Data/ 主要技术数据

型号 Part No.	曾用名 Used name	材料 Material	表面处理 Body C.	螺栓处理 Bolt C.	适用电线 mm ²	尺寸 Size	备注 Note
T034+	A	H59	Tin C.	Zinc C.	35-50	19	S-90°
T034-	B	H59	Tin C.	Zinc C.	35-50	17.5	S-270°
T035+	C	H59	Tin C.	Zinc C.	35-50	19	S-270°
T035-	D	H59	Tin C.	Zinc C.	35-50	17.5	S-90°
T036+	M.S.	H59	Tin C.	Zinc C.	35-50	19	
T036-	M.S.	H59	Tin C.	Zinc C.	35-50	17.5	
T037+	M.S.	H59	Tin C.	Zinc C.	35-50	19	10mm
T037-	M.S.	H59	Tin C.	Zinc C.	35-50	17.5	10mm
T038+	M.S.	H59	Polishing	Zinc C.	75-90	19	Heavy
T038-	M.S.	H59	Polishing	Zinc C.	75-90	17.5	Heavy

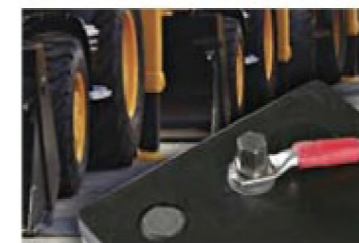
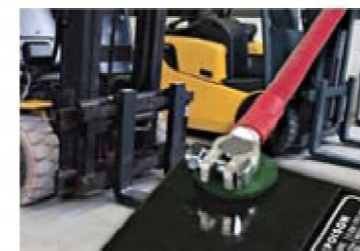
Brass Battery Terminal 黄铜蓄电池接头

**Brass Battery Terminal
黄铜蓄电池接头**

H62
Brass Battery Terminal

Main Technical Data/ 主要技术数据

型号 Part No.	曾用名 Used name	表面处理 Body C.	螺栓处理 Bolt C.	适用电线 mm ²	尺寸 Size	备注 Note
T039+	M01E	Tin C.	Zinc C.	35-50	19	9mm
T039-	M01E	Tin C.	Zinc C.	35-50	17.5	9mm
T040+	M02E	Tin C.	Zinc C.	50-75	19	11mm
T040-	M02E	Tin C.	Zinc C.	50-75	17.5	11mm
T041+	M03E	Tin C.	Zinc C.	75-90	19	12.5mm
T041-	M03E	Tin C.	Zinc C.	75-90	17.5	12.5mm
T042+	MA23+	Polishing	Yellow Zinc C.	50-75	19	11mm
T042-	MA23-	Polishing	Yellow Zinc C.	50-75	17.5	11mm
T043+	MA21+	Polishing	Yellow Zinc C.	75-90	19	12.5mm
T043-	MA21-	Polishing	Yellow Zinc C.	75-90	17.5	12.5mm
T044+	Right/Left	Tin C.	Zinc C.	35-50	19	9mm
T044-	Right/Left	Tin C.	Zinc C.	35-50	17.5	9mm
T045+	Right/Left	Tin C.	Zinc C.	50-75	19	11mm
T045-	Right/Left	Tin C.	Zinc C.	50-75	17.5	11mm
T046+	M01S	Polishing	Yellow Zinc C.	35-50	19	9mm
T046-	M01S	Polishing	Yellow Zinc C.	35-50	17.5	9mm
T047+	M02S	Polishing	Yellow Zinc C.	50-75	19	11mm
T047-	M02S	Polishing	Yellow Zinc C.	50-75	17.5	11mm



T039/T040 >>



T041 >>



T042/T043 >>



T046/T047 >>



Brass Battery Terminal 黄铜蓄电池接头



Brass Battery Terminal
黄铜蓄电池接头

H59
Brass Battery Terminal

Main Technical Data/ 主要技术数据

型号 Part No.	曾用名 Used name	材料 Material	表面处理 Body C.	螺栓处理 Bolt C.	适用电线 mm'	尺寸 Size	备注 Note
T048+	RoL.M-s	H59	Blasting	Zinc C.	35-50	19	RoHS
T048-	RoL.M-s	H59	Blasting	Zinc C.	35-50	17.5	RoHS
T049+	RoL.M-b	H59	Blasting	Zinc C.	50-75	19	RoHS
T049-	RoL.M-b	H59	Blasting	Zinc C.	50-75	17.5	RoHS
T050+	Brazil	H59	Blasting	Yellow Zinc C.	75-90	19	
T050-	Brazil	H59	Blasting	Yellow Zinc C.	75-90	17.5	
T051+	US	H59	Blasting	Yellow Zinc C.	35-50	19	
T051-	US	H59	Blasting	Yellow Zinc C.	35-50	17.5	

Brass Battery Terminal 黄铜蓄电池接头



Brass Battery Terminal
黄铜蓄电池接头

H59
Brass Battery Terminal

Main Technical Data/ 主要技术数据

型号 Part No.	曾用名 Used name	材料 Material	表面处理 Body C.	螺栓处理 Bolt C.	适用电线 mm'	尺寸 Size	备注 Note
T052+	B.K.T.	H59	Polishing	Yellow Zinc C.	35-50	19	
T052-	B.K.T.	H59	Polishing	Yellow Zinc C.	35-50	17.5	
T053+	S.W.	H59	Copper C.	Copper C.	35-50	19	
T053-	S.W.	H59	Copper C.	Copper C.	35-50	17.5	
T054+	Extrusion	H59	Polishing	Yellow Zinc C.	35-50	19	
T054-	Extrusion	H59	Polishing	Yellow Zinc C.	35-50	17.5	
T055+	Extrusion	H59	Polishing	Yellow Zinc C.	50-75	19	
T055-	Extrusion	H59	Polishing	Yellow Zinc C.	50-75	17.5	
T056+	Ring	Zamak5	Copper C.	Copper C.	25-35	13	
T056-	Ring	Zamak5	Copper C.	Copper C.	25-35	11.5	

Zinc Battery Terminal 锌蓄电池接头



Zinc Battery Terminal
锌蓄电池接头

Zamak5
Zinc Battery Terminal

Main Technical Data/ 主要技术数据

型号 Part No.	曾用名 Used name	材料 Material	表面处理 Body C.	螺栓处理 Bolt C.	适用电线 mm ²	尺寸 Size	备注 Note
T057	TZ110	Zamak5	Zinc C.	Zinc C.	35-50	18.2	Uni, RoHS
T058	TZ510	Zamak5	Zinc C.	Zinc C.	35-50	18.2	Uni, RoHS
T059	TZ800	Zamak5	Zinc C.	Zinc C.	50-75	18.2	Uni, RoHS
T060	TZ210	Zamak5	Zinc C.	Zinc C.	50-75	18.2	Uni, RoHS

Zinc Battery Terminal 锌蓄电池接头



Zinc Battery Terminal
锌蓄电池接头

Zamak5
Zinc Battery Terminal

Main Technical Data/ 主要技术数据

型号 Part No.	曾用名 Used name	材料 Material	表面处理 Body C.	螺栓处理 Bolt C.	适用电线 mm ²	尺寸 Size	备注 Note
T061+	TZ700	Zamak5	Zinc C.	Zinc C.	/	19	RoHS
T061-	TZ705	Zamak5	Zinc C.	Zinc C.	/	17.5	RoHS
T062+	TZ740	Zamak5	Zinc C.	Zinc C.	/	19	RoHS
T062-	TZ745	Zamak5	Zinc C.	Zinc C.	/	17.5	RoHS
T063+	TZ620	Zamak5	Zinc C.	Zinc C.	50-75	19	RoHS
T063-	TZ625	Zamak5	Zinc C.	Zinc C.	50-75	17.5	RoHS
T064+	TZ115	Zamak5	Zinc C.	Zinc C.	50-75	19	RoHS
T064-	TZ116	Zamak5	Zinc C.	Zinc C.	50-75	17.5	RoHS

Zinc Battery Terminal 锌蓄电池接头



Zinc Battery Terminal
锌蓄电池接头

Zamak5
Zinc Battery Terminal

Main Technical Data/ 主要技术数据

型号 Part No.	曾用名 Used name	材料 Material	表面处理 Body C.	螺栓处理 Bolt C.	适用电线 mm ²	尺寸 Size	备注 Note
T065+	TZ1150	Zamak5	Zinc C.	Zinc C.	/	19	RoHS
T065-	TZ1155	Zamak5	Zinc C.	Zinc C.	/	17.5	RoHS
T066+	TZ220	Zamak5	Zinc C.	Zinc C.	35-50	19	RoHS
T066-	TZ225	Zamak5	Zinc C.	Zinc C.	35-50	17.5	RoHS
T067+	TZ100	Zamak5	Zinc C.	Zinc C.	35-50	19	RoHS
T067-	TZ100	Zamak5	Zinc C.	Zinc C.	35-50	17.5	RoHS
T068+	TZ112	Zamak5	Zinc C.	Zinc C.	35-50	19	RoHS
T068-	TZ112	Zamak5	Zinc C.	Zinc C.	35-50	17.5	RoHS

Zinc Battery Terminal 锌蓄电池接头



Zinc Battery Terminal
锌蓄电池接头

Zamak5
Zinc Battery Terminal

Main Technical Data/ 主要技术数据

型号 Part No.	曾用名 Used name	材料 Material	表面处理 Body C.	螺栓处理 Bolt C.	适用电线 mm ²	尺寸 Size	备注 Note
T069+	BE	Zamak5	Brass C.	Yellow Zinc C.	35-50	19	RoHS
T069-	BE	Zamak5	Brass C.	Yellow Zinc C.	35-50	17.5	RoHS
T070+	BR-S	Zamak5	Brass C.	Yellow Zinc C.	35-50	19	RoHS
T070-	BR-S	Zamak5	Brass C.	Yellow Zinc C.	35-50	17.5	RoHS
T071+	HD	Zamak5	Zinc C.	Zinc C.	50-75	19	RoHS
T071-	HD	Zamak5	Zinc C.	Zinc C.	50-75	17.5	RoHS
T072+	BR	Zamak5	Zinc C.	Zinc C.	35-50	19	RoHS
T072-	BR	Zamak5	Zinc C.	Zinc C.	35-50	17.5	RoHS

Zinc Battery Terminal 锌蓄电池接头



Zinc Battery Terminal
锌蓄电池接头

Zamak5
Zinc Battery Terminal

Main Technical Data/ 主要技术数据

型号 Part No.	曾用名 Used name	材料 Material	表面处理 Body C.	螺栓处理 Bolt C.	适用电线 mm ²	尺寸 Size	备注 Note
T073+		Zamak5	Brass C.	Yellow Zinc C.	35-50	19	RoHS
T073-		Zamak5	Brass C.	Yellow Zinc C.	35-50	17.5	RoHS
T074+	France	Zamak5	Brass C.	Yellow Zinc C.	35-50	19	RoHS
T074-	France	Zamak5	Brass C.	Yellow Zinc C.	35-50	17.5	RoHS
T075+	US	Zamak5	Brass C.	Yellow Zinc C.	35-50	19	RoHS
T075-	US	Zamak5	Brass C.	Yellow Zinc C.	35-50	17.5	RoHS
T076+	BKT	Zamak5	Brass C.	Yellow Zinc C.	35-50	19	RoHS
T076-	BKT	Zamak5	Brass C.	Yellow Zinc C.	35-50	17.5	RoHS

Zinc Battery Terminal 锌蓄电池接头



Zinc Battery Terminal
锌蓄电池接头

Zamak5
Zinc Battery Terminal

Main Technical Data/ 主要技术数据

型号 Part No.	曾用名 Used name	材料 Material	表面处理 Body C.	螺栓处理 Bolt C.	适用电线 mm ²	尺寸 Size	备注 Note
T077+	BT1	Zamak5	Zinc C.	Zinc C.	35-50	19	RoHS
T077-	BT2	Zamak5	Zinc C.	Zinc C.	35-50	17.5	RoHS
T078+	BT3	Zamak5	Zinc C.	Zinc C.	50-75	19	RoHS
T078-	BT4	Zamak5	Zinc C.	Zinc C.	50-75	17.5	RoHS
T079	BT5	Zamak5	Brass C.	Yellow Zinc C.	50-75	19	RoHS
T080+	BT8	Zamak5	Brass C.	Yellow Zinc C.	50-75	19	RoHS
T080-	BT9	Zamak5	Brass C.	Yellow Zinc C.	50-75	17.5	RoHS



Lead Battery Terminal
铝蓄电池接头



Main Technical Data/ 主要技术数据

型号 Part No.	曾用名 Used name	材料 Material	表面处理 Body C.	螺栓处理 Bolt C.	适用电线 mm ²	尺寸 Size	备注 Note
T081+	BT33	LEAD	Paiting	Zinc C.	35-50	19	
T081-	BT34	LEAD	Paiting	Zinc C.	35-50	17.5	
T082+	/	LEAD	Paiting	Zinc C.	35-50	19	
T082-	/	LEAD	Paiting	Zinc C.	35-50	17.5	
T083+	/	LEAD	Original	Zinc C.	35-50	uni	
T084-	/	LEAD	Original	Zinc C.	50-75	uni	
T085	/	LEAD	Original	Zinc C.	35-50	3/8	
T086	/	LEAD	Original	Zinc C.	35-50	18.2	
T087	/	LEAD	Original	Zinc C.	/	17.5	
T088	/	LEAD	Original	Zinc C.	/	17.5	



Booster Cable 应急电源线

UL Standard >>



4AWG-UL

SAE Standard >>



SAE-4GA

Cable Specification:



PVC



Main Technical Data/ 主要技术数据

型号 Item	线规 Gauge	长度 Length	标准 Standard	线材料 Cable Material	夹子材料 Clamp Jaw Material	绝缘材料 Insulation
10AWG-UL	10AWG	12-25ft	UL	CCA/Copper	Copper plate steel	PVC
8AWG-UL	8AWG	12-25ft	UL	CCA/Copper	Copper plate steel	PVC
6AWG-UL	6AWG	12-25ft	UL	CCA/Copper	Copper plate steel	PVC
4AWG-UL	4AWG	12-25ft	UL	CCA/Copper	Copper plate steel	PVC
2AWG-UL	2AWG	12-25ft	UL	CCA/Copper	Copper plate steel	PVC
SAE-1GA	1GA	12-25ft	SAE	CCA/Copper	Copper plate steel	PVC
SAE-2GA	2GA	12-25ft	SAE	CCA/Copper	Copper plate steel	PVC
SAE-4GA	4GA	12-25ft	SAE	CCA/Copper	Copper plate steel	PVC
SAE-6GA	6GA	12-25ft	SAE	CCA/Copper	Copper plate steel	PVC
SAE-8GA	8GA	12-25ft	SAE	CCA/Copper	Copper plate steel	PVC
SAE-10GA	10GA	12-25ft	SAE	CCA/Copper	Copper plate steel	PVC



Table of Contents/ 产品索引

1. Booster Cable / 应急电源线
2. Battery Clamp / 鳄鱼夹
3. Battery Accessories/ 电瓶附件

**Booster Cable,
Battery Accessories**

应急电源线, 电瓶附件



ROHS
compliant

Booster Cable 应急电源线

Booster Cable
应急电源线

PVC

Main Technical Data/ 主要技术数据

型号 Part No.	线规 Gauge	长度 Length	标准 Standard	线材料 Cable Material	夹子材料 Clamp Jaw Material	绝缘材料 Insulation
GS-10	10mm*2	2.5m	GS	CCA/ Copper	Copper plate steel	PVC
GS-16	16mm*2	3m	GS	CCA/ Copper	Copper plate steel	PVC
GS-25	25mm*2	3.5m	GS	CCA/ Copper	Copper plate steel	PVC
GS-35	35mm*2	4.5m	GS	CCA/ Copper	Copper plate steel	PVC
GS-50	50mm*2	5m	GS	CCA/ Copper	Copper plate steel	PVC
NM-100	100A	2.5m	NM	CCA/ Copper	Zinc plate steel	PVC
NM-200A	200A	3m	NM	CCA/ Copper	Zinc plate steel	PVC
NM-300A	300A	3.5m	NM	CCA/ Copper	Zinc plate steel	PVC
NM-400A	400A	4.5m	NM	CCA/ Copper	Zinc plate steel	PVC

型号 Part No.	线规 Gauge	长度 Length	标准 Standard	线材料 Cable Material	夹子材料 Clamp Jaw Material	绝缘材料 Insulation
JP-50	50	2.5m	JP	CCA/ Copper	Copper plate steel	PVC/ Rubber
JP-80	80	2.5m-3m	JP	CCA/ Copper	Copper plate steel	PVC/ Rubber
JP-100	100	3.5-5m	JP	CCA/ Copper	Copper plate steel	PVC/ Rubber
JP-200	200	5m	JP	CCA/ Copper	Copper plate steel	PVC/ Rubber



Cable>>



GS-35mm²



NM-100A



JP-100



JP-200

Battery Clamp 鳄鱼夹



Battery Clamp
鳄鱼夹

PVC

Main Technical Data/ 主要技术数据

型号 Part No.	线规 Gauge	安培 Amp	材料 Cable Material	绝缘材料 Insulation
BAC01+	25-35	500	Brass H59	PVC/RED
BAC01-	25-35	500	Brass H59	PVC/Black
BAC02+	35-50	700	Brass H59	PVC/RED
BAC02-	35-50	700	Brass H59	PVC/Black
BAC03+	50-95	1000	Brass H59	PVC/RED
BAC03-	50-95	1000	Brass H59	PVC/Black
BAC04+	25-35	650	Brass H59	PVC/RED
BAC04-	25-35	650	Brass H59	PVC/Black
BAC05+	35-50	850	Brass H59	PVC/RED
BAC05-	35-50	850	Brass H59	PVC/Black
BAC06+	75-95	1200	Brass H59	PVC/RED
BAC06-	75-95	1200	Brass H59	PVC/Black

Cable>>



BAC 01/BAC 02/BAC 03



BAC 04



BAC 05



BAC 06

Battery Clamp 鳄鱼夹

Battery Clamp
鳄鱼夹

PVC

Main Technical Data/ 主要技术数据

型号 Part No.	线规 Gauge	安培 amp	材料 Cable Material	绝缘材料 Insulation
BAC07+	/	35	AISI1020	Rubber/RED
BAC07-	/	35	AISI1020	Rubber/Black
BAC08+	/	80	AISI1020	Rubber/RED
BAC08-	/	80	AISI1020	Rubber/Black
BAC09+	/	120	AISI1020	Rubber/RED
BAC09-	/	120	AISI1020	Rubber/Black
BAC10+	16	100-200	Brass H59	PVC/RED
BAC10-	16	100-200	Brass H59	PVC/Black
BAC11+	35-50	200-350	Brass H59	PVC/RED
BAC11-	35-50	200-350	Brass H59	PVC/Black
BAC12+	75-95	800-1000	Brass H59	PVC/RED
BAC12-	75-95	800-1001	Brass H59	PVC/Black



Battery Clamp>>



BCA07



BCA08



BCA09



BCA10

Battery Accessory 电瓶附件

Battery Box>>



BA006



BA007



BA008



BA009



BA010



BA011



BA012



BA001



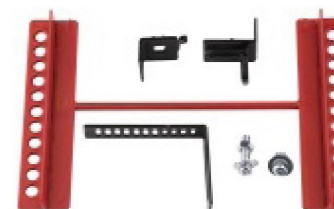
BA002



BA003



BA004



BA005