

PRODUCTS

EP SERIES

EP-500,EP-501,EP-502,EP-503,EP-504,EP-505,EP-506,EP-602,056200-0540,

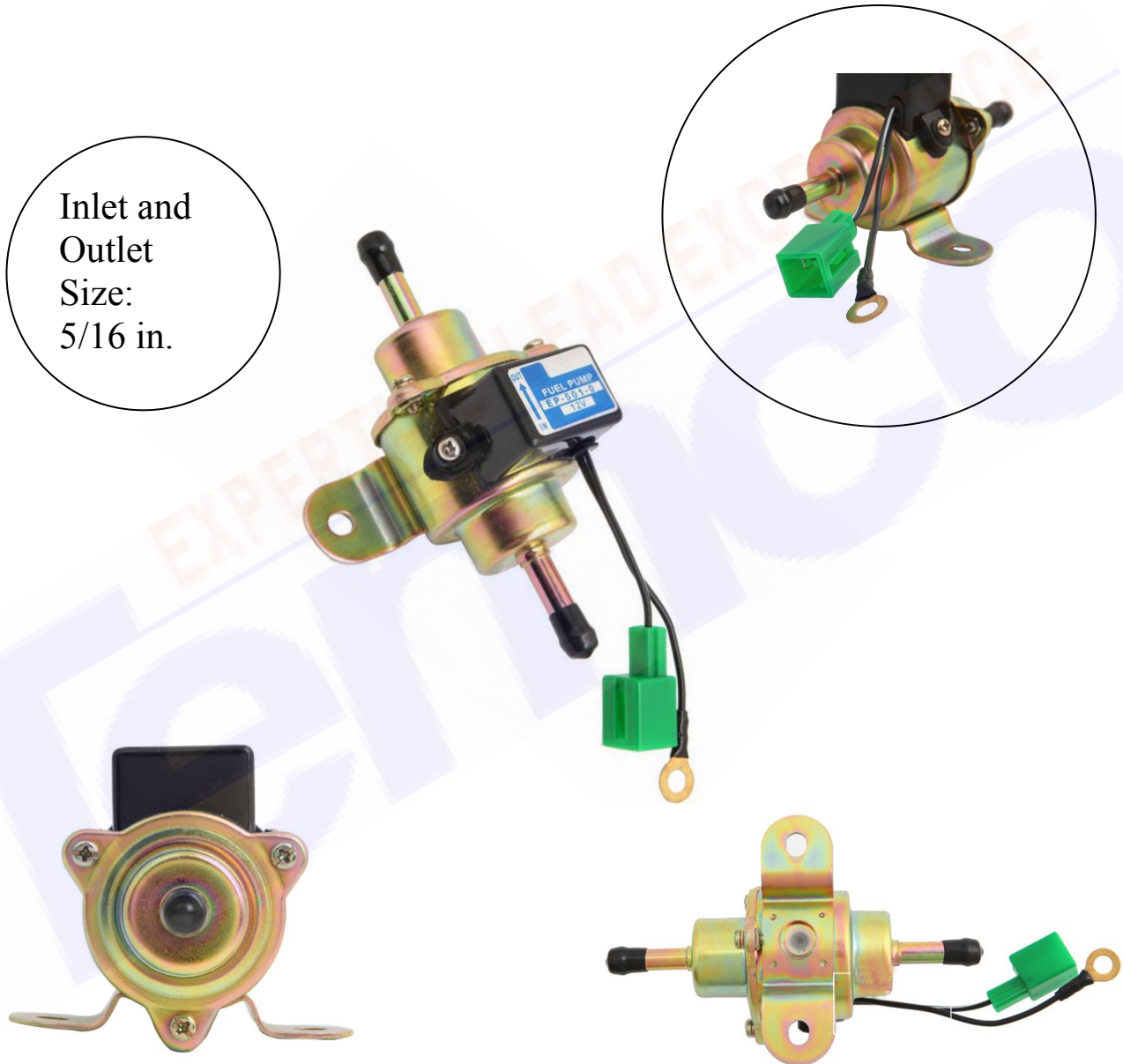
056200-0570,056200-0582 ETC.



EP Specification:

Each Product For Your Needs

Inlet and
Outlet
Size:
5/16 in.



Note: Pls confirm the diameter Inlet and outlet fit for your hose before purchase. Any difference is able to be changed (like inlet and outlet size, colour, connector ETC.)

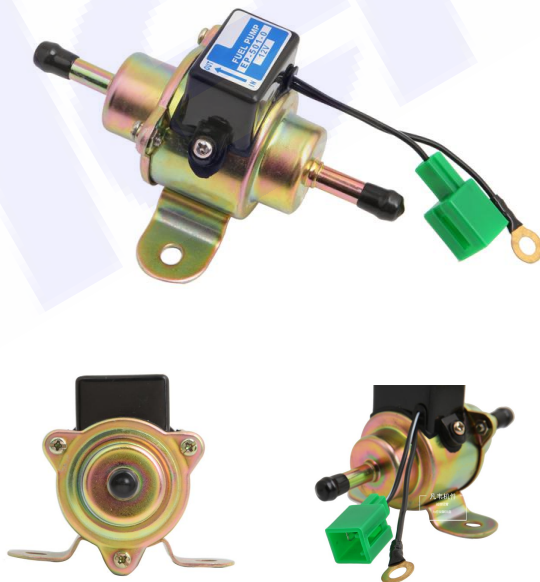
Parameter:

Model:EP-500



ELECTRONIC FUEL PUMP
 Inlet and Outlet Size: 5/16 in.
 Voltage:12V
 Operating current:<1.5A
 Pressure:3psi-5psi
 Flow:>90L/H(1500cc/min,
 23.7US Gal/H,
 19.7UK Gal/H)
 MAZDA NO.:
 8118-13-350
 CAR OMDL:
 MAZDA929L(4MS-T.-CT)MA
 YEAT:77-79 ENG:2000CC

Model:EP-501



ELECTRONIC FUEL PUMP
 Inlet and Outlet Size: 5/16 in.
 Voltage:12V
 Operating current:<1.5A
 Pressure:3psi-5psi
 Flow:>90L/H(1500cc/min,
 23.7US Gal/H,
 19.7UK Gal/H)

Model:EP-502



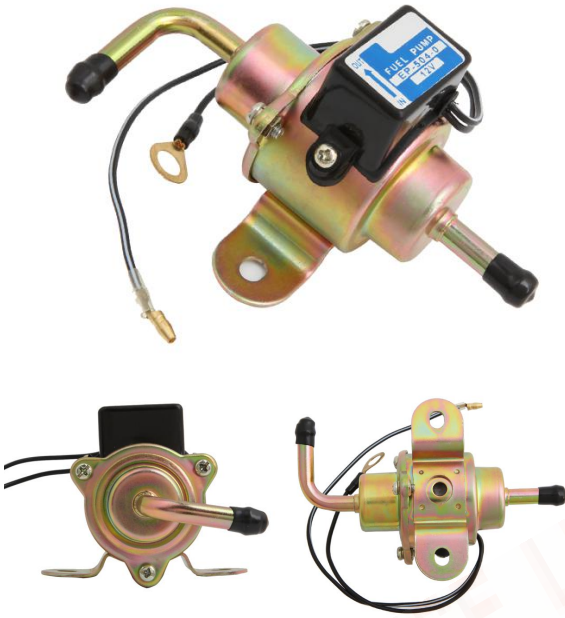
ELECTRONIC FUEL PUMP
Inlet and Outlet Size: 5/16 in.
Voltage:12V Operating
current:<1.5A Pressure:3psi-5psi
Flow:>90L/H(1500cc/min,
23.7US Gal/H,
19.7UK Gal/H)
CAR MODRL:MAZDA
B1600LHD/B1800LHD
BOSCH:69200
YEAR:79-82
AC DELCO:EP202.EP259
CARTER:P60504.P70235.P72008.P
74021.P74024
ENG:1600/1800CC
FORD NO.:D97Z-9350A
YEAR:79-84 EMG:2000CC
MAZDA NO.:8788-13-350
CAR MODEL:COUIRIER MA

Model:EP-503



ELECTRONIC FUEL PUMP
Inlet and Outlet Size: 5/16 in.
Voltage:12V
Operating current:<1.5A
Pressure:3psi-5psi
Flow:>90L/H(1500cc/min,
23.7US Gal/H,
19.7UK Gal/H)
MAZDA NO.:1943-13-350A /
0453-13-350
CAR MODEL:MAZDA929
LHD(LA2VS-T)(LA2VS-RT)
YEAR:73-74.
ENGINE:VC.1800CC DW-320

Model:EP-504



ELECTRONIC FUEL PUMP
Inlet and Outlet Size: 5/16 in.
Voltage:12V
Operating current:<1.5A
Pressure:3psi-5psi
Flow:>90L/H(1500cc/min,
23.7US Gal/H,
19.7UK Gal/H)

Model:EP-505



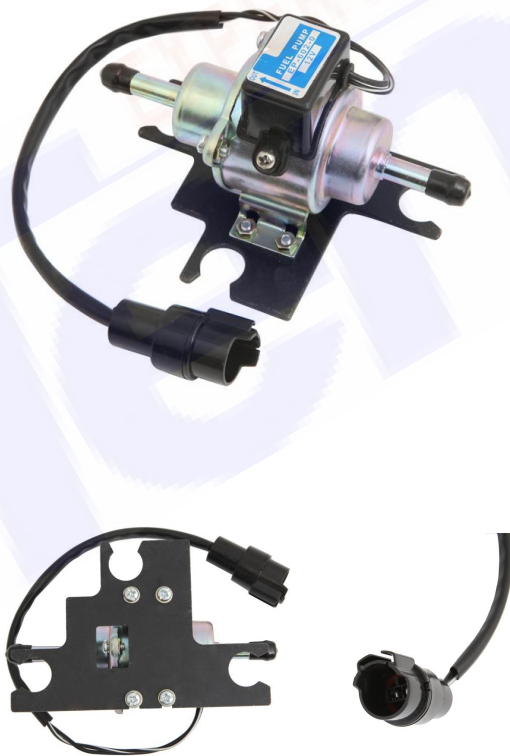
ELECTRONIC FUEL PUMP
Inlet and Outlet Size: 6/25 in.
Voltage:12V
Operating current:<1.5A
Pressure:3psi-5psi
Flow:>90L/H(1500cc/min,
23.7US Gal/H,
19.7UK Gal/H)
MAZDA NO.:8173-13-350A /
8174-13-350
CAR MODEL:MAZDA626
LHD(CM2MS)(CB2VS)NA.MA
YEAR:80.
ENG:1600/1800CC

Model:EP-506



ELECTRONIC FUEL PUMP
Inlet and Outlet Size: 5/16 in.
Voltage:12V
Operating current:<1.5A
Pressure:3psi-5psi
Flow:>90L/H(1500cc/min,
23.7US Gal/H ,
19.7UK Gal/H)
MAZDA NO.:8173-13-350A /
8178-13-350
CAR MODEL:MAZDA9291
(LA4MS-T.-CT)(LA4MV.-T)MA
YEAR:77
DW-331

Model:EP-602



ELECTRONIC FUEL PUMP
Inlet and Outlet Size: 5/16 in.
Voltage:12V
Operating current:<1.5A
Pressure:3psi-5psi
Flow:>90L/H(1500cc/min,
23.7US Gal/H ,19.7UK Gal/H)
CAR MODEL: SUBARU.BRAT
WITHOUT TURBO
HATCHBACK:1600CC/1800CC(US
A)
MAZDA626(CM2MS)(CB2VS)
NA.MA.YEAR:80
MAZDA NO.:8173-13-350A /
8174-13-350
RNH:1600/1800CC
AC DELCO:E151
ENGINE:EA71.81.82
CARTER:P74029 DW-184
(YEAR:82-)42021-GA140
7420-GA140

Model:056200-0570



UNIVERSAL ELECTRIC FUEL PUMP

Inlet and Outlet Size: 6/25 in.
Voltage:12V
Operating current:<1.5A
Pressure:3psi-5psi
Flow:>60L/H (1000cc/min,
15.9US Gal/H,13.2UK Gal/H)
MAZDA NO.:056200-0570
ANOTHER NO.:(S-89) KYOSAN

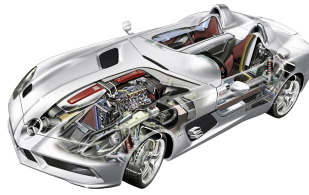
Model:056200-0582



UNIVERSAL ELECTRIC FUEL PUMP

Inlet and Outlet Size: 6/25 in.
Voltage:12V
Operating current:<1.5A
Pressure:3psi-5psi
23100-87516-000
Flow:>60L/H(1000cc/min,
15.9US Gal/H,13.2UK Gal/H)
DAIHATSU NO.:23100-87516
KYOSAN

UC SERIES



UC-V3,UC-V4,UC-V6B,UC-V6H,UC-J3,UC-J5,UC-J7,UC-J8,UC-J10H,UC-J10J,

UC-J10Y,UC-J12A ETC.



UC Specification:

Each Product For Your Needs

Inlet and
Outlet Size:
6/25 in.



Note: Pls confirm the diameter Inlet and outlet fit for your hose before purchase. Any difference is able to be changed (like inlet and outlet size, colour, connector ETC.)

Model:UC-V3



C.P PUMP

Inlet Size Outlet Size: 3/8 in

Voltage:12V

Operating current:<1.7A

Pressure:2psi-4psi

Flow:>60L/H (1000cc/min,
15.9 US Gal/H ,13.2UK Gal/H)

SUBARU NO.:642020090

Model:UC-V4



C.P PUMP

Inlet Size Outlet Size: 5/16 in

Voltage:12V

Operating current:<1.7A

Pressure:2psi-5psi

Flow:>60L/H (1000cc/min,
15.9 US Gal/H ,13.2UK Gal/H)

SUZUKI NO.:15100-85501

OTHER PART NO.:18100-78001

APPLICATLON CARS:

SUZUKI.SUPER

CARRY(85-89)F10A.FT100 Pronto

1000CC..T2/SK410

SUBARU NO.:642020090

Model:UC-V6B



C.P PUMP

Inlet Size Outlet Size: 5/16 in

Voltage:12V Operating current:<1.7A

Pressure:2psi-5psi

Flow:>60L/H (1000cc/min,15.9 US

Gol/H ,

Another Part

NO.:16700-PC6-003/18100-79101

SUZUKI NO.:15100-77300

CAR MODEL:SUZUKI ST-100

T3/T5

Model:UC-V6H



C. P PUMP

Inlet Size Outlet Size: 5/16 in

Voltage:12V

Operating current:<1.7A

Pressure:2psi-5psi

Flow:>60L/H (1000cc/min,15.9 US

Gol/H ,

13.2UK Gol/H)

CAR MODEL:DAMAZ

<p>Model:UC-J3</p> 	<p>C.P PUMP Inlet Size Outlet Size: 5/16 in AIRTEX:E8303 BOSCH:69067 AC DELCO:EP205 Voltage:12V Operating current:<1.7A Pressure:2psi-4psi Inlet Type: Hose Barb Outlet Type: Hose Barb Flow:>70L/H(1166cc/min,18.5US Gol/H ,15.5UK Gol/H) HONDA PRELUDE 1.8(82-79) ACCORD 1.8(81-79) CARTER:P72002 16700-689-045/25 16700-689-005/015 / 16700-PB1-003 Part Key: 000566544</p>
<p>Model:UC-J5</p> 	<p>C.P PUMP Inlet Size Outlet Size: 5/16 in Voltage:12V Operating current:<1.7A Pressure:2psi-4psi Inlet Type: Hose Barb Outlet Type: Hose Barb Flow:>70L/H (1166cc/min, 18.5US Gol/H ,15.5UK Gol/H) AIRTEX:E8055 BOSCH:69062 AC DELCO:EP148 CARTER:P60408 CAR MODEL:HONDA CIVIC 1.3/1.5L(83-80) WAGOVAN 1.5L(83-82) 16700-PA6-003 16700-PA0-013 13700-PA0-003/033</p>

Model:UC-J7



C.P PUMP

Inlet Size Outlet Size: 5/16 in

Voltage:12V

Operating current:<1.7A

Pressure:2psi-4psi

Outlet Size: 0.315

Inlet Type: Hose Barb

Outlet Type: Hose Barb

Flow:>70L/H (1166cc/min,
18.5US Gal/H ,15.5UK Gal/H)

AIRTEX:E8158

BOSCH:69064

AC DELCO:EP206

HONDA:16700-PC6-003 /

16700-PC1-003/013

CAR MODEL:ACCORO

CARTER:P72077

YEAR:82-82

ENG:1600CC

Part Key: 000566570

Model:UC-J8



C.P PUMP

Outlet Size: 5/16 in

Voltage:12V

Operating current:<1.7A

Pressure:2psi-4psi

Inlet Type: Hose Barb

Outlet Type: Hose Barb

Flow:>90L/H(1500cc/min,
23.8US Gal/H 19.7UK Gal/H)

AIREX:E8316

BOSCH:69065

AC DELCO:EP234

HONDA NO:16700-PD2-003

Applicable Car:HONDA/SUBARU

CAR MODEL:ACCORO,1.8L

CARTER:P70217

YEAR:81.ENG:1500CC

Part Key: 000566542

Model:UC-J10F



C.P PUMP

Inlet Outlet Size: 6/25 in

Voltage:12V

Operating current:<1.7A

Pressure:2psi-4psi

Flow:>60L/H(1000cc/min,
15.9US Gal/H,13.2UK Gal/H)

OEM NO:MD126871 MD126878

Applicable Car:Mitsubishi

Model:UC-J10H



C.P PUMP

Inlet Outlet Size: 6/25 in

Voltage:12V

Operating current:<1.7A

Pressure:2psi-4psi

Flow:>60L/H(1000cc/min,
15.9US Gal/H,13.2UK Gal/H)

CARRY NO.:15100-77500

Applicable

Car:HONDA/SUBARU/SUZUKI
/FUTURA

Model:UC-J10J



C.P PUMP

Inlet Outlet Size: 6/25 in

Voltage:12V

Operating current:<1.7A

Pressure:2psi-4psi

Flow:>60L/H(1000cc/min, 15.9US
Gol/H,

13.2UK Gol/H)

AR

Model:SUZUKI,SUBARU,CARRY

OTHE NO.:15100-77500

Model:UC-J10Y



C.P PUMP

Inlet Outlet Size: 6/25 in

Voltage:12V

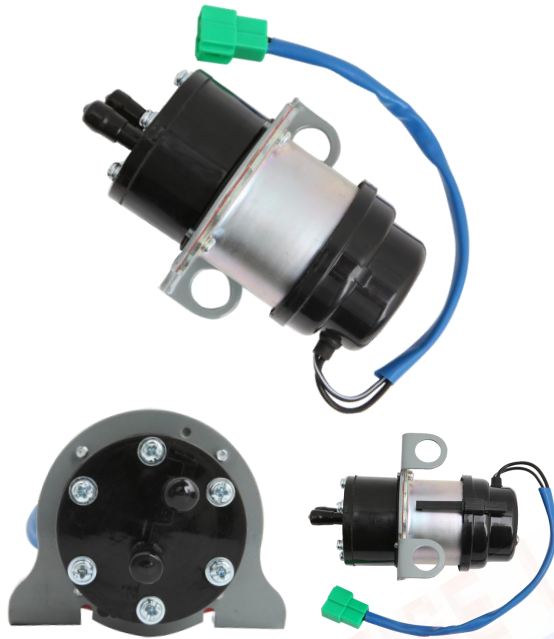
Operating current:<1.7A

Pressure:2psi-4psi

Flow:>60L/H(1000cc/min,
15.9US Gol/H,13.2UK Gol/H)

MAZDA NO:0222-13-350

Model:UC-J12A E-8091



C.P PUMP

Inlet Outlet Size: 5/16 in

Voltage:12V

Operating current:<1.7A

Pressure:2psi-4psi

Flow:>90L/H(1500cc/min,23.8 US
Gal/H,

19.7 UK Gal/H)

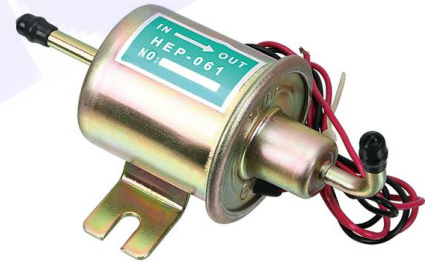
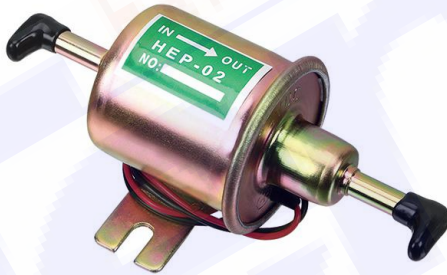
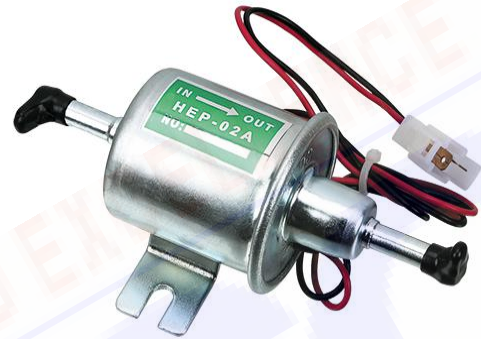
MAZDA NO:0222-13-350 /

B697-13-350 / N249-13-400A/B

MAZDA:B1600/1800(74-71)(PLCK
UP 1.6L) 323 4W.D 1.6L R×7 1.1L

HEP SERIES

HEP-01,HEP-02,HEP-02A,HEP-061,SEP-001 ETC.



HKT SERIES

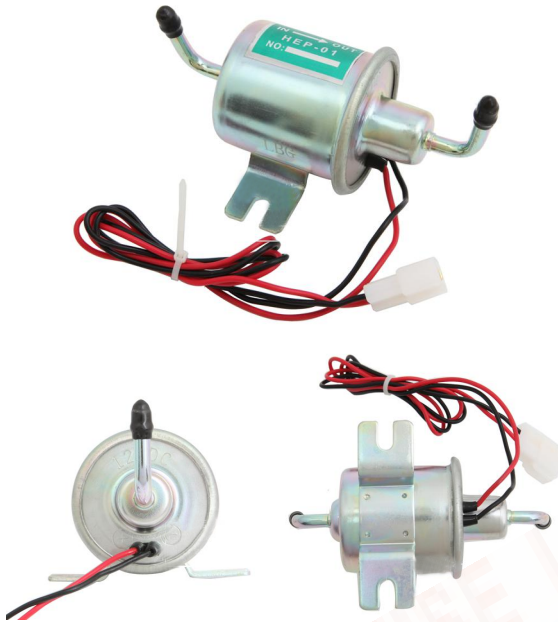
Each Product For Your Needs

Inlet and
Outlet Size:
5/16 in.



Note: Pls confirm the diameter Inlet and outlet fit for your hose before purchase. Any difference is able to be changed (like inlet and outlet size, colour, connector ETC.)

Model:HEP-01



FUEL PUMP

Inlet and Outlet Size: 6/25 in.

Voltage:12V

Operating current:<1.5A

Pressure:3psi-5psi

Flow:>80L/H (1333cc/min,
21US Gal/H, 17.5UK Gal/H)

Model:HEP-02 Model:HEP-02A
12V or 24V



ELECTRIC FUEL PUMP

Inlet and Outlet Size: 5/16 in.

Voltage:12V

Operating current:<1.5A

Pressure:3psi-5psi

Flow:>100L/H (1666cc/min,
26.5US Gal/H,22UK Gal/H)

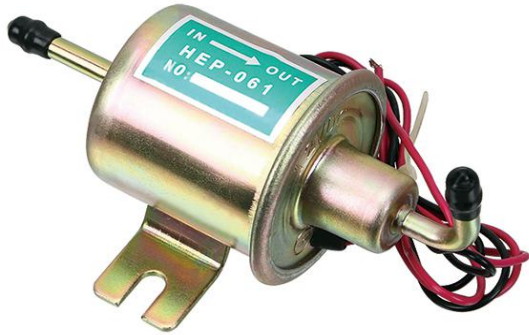
CAR MODEL:

TOYOTA.MAZDA.HONDA.

NISSAN.032-AT09-06001

Note:Connector is able to be changed .

Model:HEP-061



AUTOMOBILE FUEL PUMP

Inlet and Outlet Size: 5/16 in.

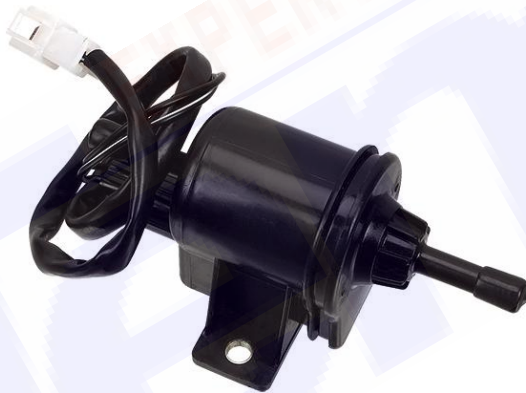
Voltage:12V

Operating current:<1.5A

Pressure:3psi-5psi

Flow:>80L/H (1333cc/min,
>21US Gal/H, 17.5UK Gal/H)

Model:SEP-001



Voltage:12V

Inlet and Outlet Size: 5/16 in.

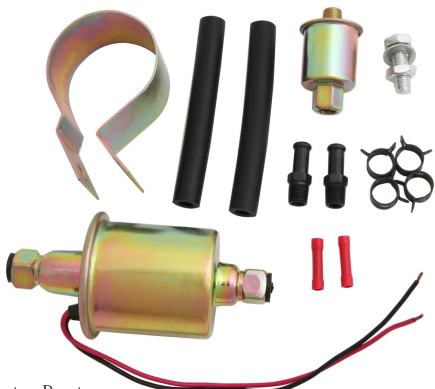
Operating current:<1.5A

Pressure:3.6psi-6psi

Flow:>100L/H (1666cc/min,
26.5US Gal/H,22UK Gal/H)

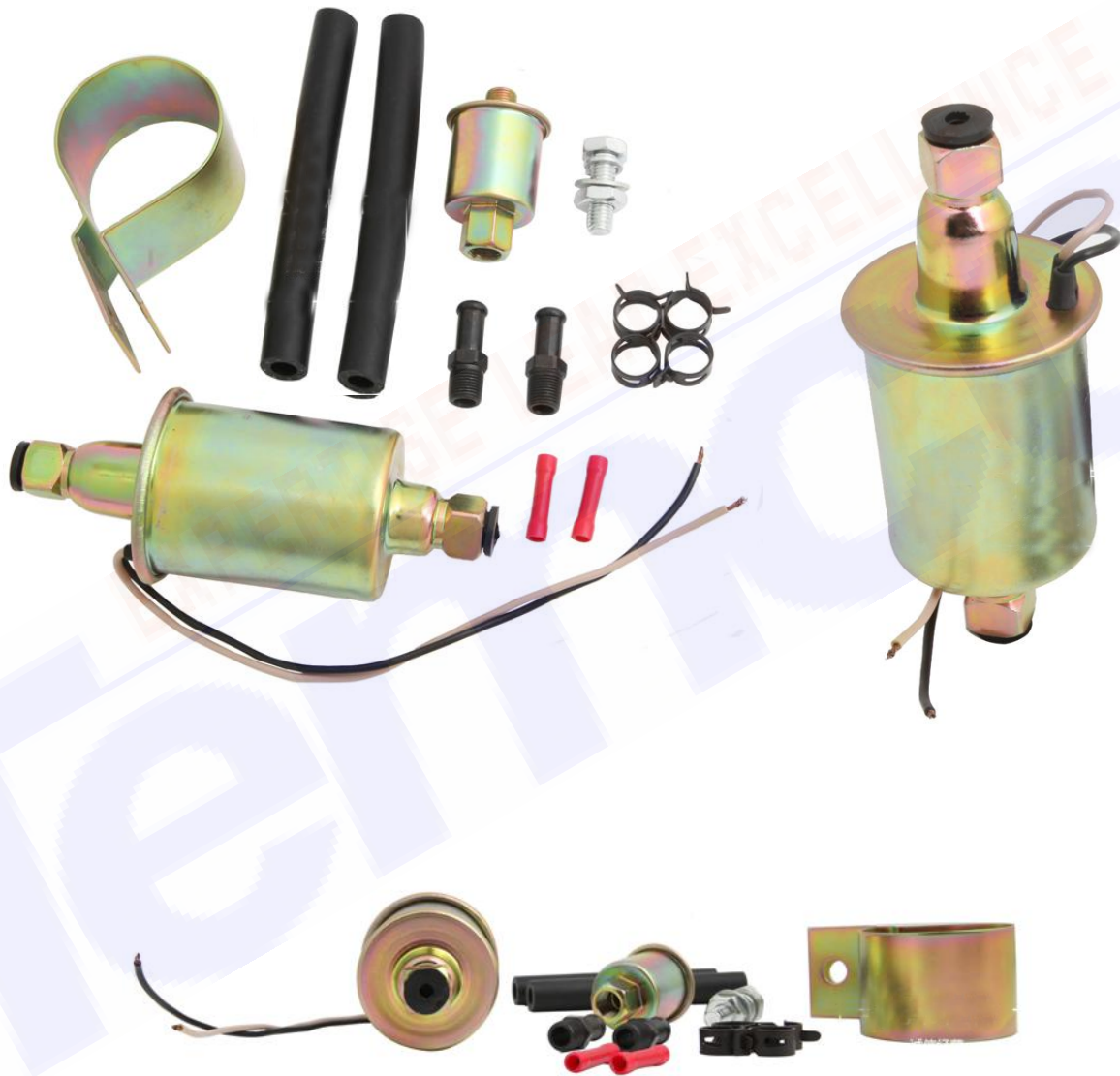
CAR MODEL:MAZDA

E-8012S,E-8016S,E-3309,EP-1000,E-2054,E-2014,E-2019,E-3015,E-3158,E-8131,E-8153,E-8251,E-8304,E-8318,E-8337,A5002,P-11K,3169582 ,ETC



AIRTEX SERIES

Each Product For Your Needs



Note: Pls confirm the diameter Inlet and outlet fit for your hose before purchase. Any difference is able to be changed (like inlet and outlet size, colour, connector ETC).

Model:E-8012S



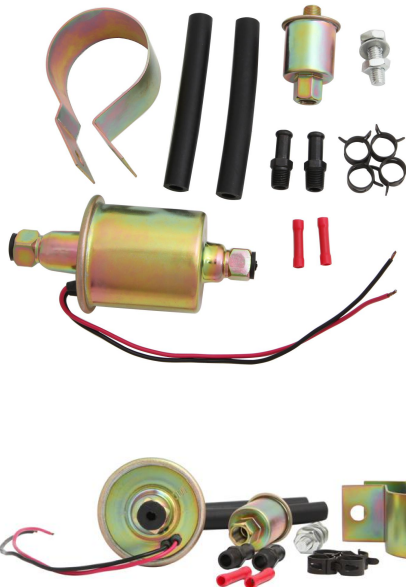
Electric Fuel Pump-IN LINE
OUTLET SIZE:5/16 IN.
Voltage:12V
Operating current:<1.5A
Package Contents: Pump & Kit
Pressure:5psi-9psi
INLET TYPE:Strainer
OUTLET TYPE:HOSE BEAD
Flow:>110L/H(1833cc/min,
29.0US Gal/H ,24.20UK Gal/H)
CAR MODEL:
BUICK/CADILLAC/CHEVROLET/
FORD/GMC/JEEP/MERCURY/OL
DSMOBILE/PLYMOUTH/PONTIA
C

Model:E-8016S



Electric Fuel Pump-IN LINE
OUTLET SIZE:5/16 IN.
Voltage:12V
Operating current:<1.5A
Package Contents: Pump & Kit
Pressure:2.5psi-4.5 psi
INLET TYPE:Strainer
OUTLET TYPE:HOSE BEAD
Flow:>110L/H(1833cc/min,
29.0US Gal/H ,24.20UK Gal/H)
CAR MODEL:ALFA
ROMEO/AMERICAN
MOTORS/AUDI/AUSTIN/AUSTIN
HEALEY/BMW/CHEVROLET/DODGE/
FERRARI/FIAT/FORD/GMC/HILLMAN/
HONDA/INTERNATIONAL/ISUZU/JAG
UAR/JEEP/JENSEN/LANCIA/MAZDA/
MERCEDES-BENZ/MERCURY/MG/MIT
SUBISHI/NISSAN/OLDSMOBILE/OPEL
/PEUGEOT/PLYMOUTH/PONTIAC/POR
SCHE/RENAULT/ROVER/SAAB/SIMC
A/SUBARU/SUNBEAM/SUZUKI/T
OYOTA/TRIUMPH/VOLKSWAGE
N/VOLVO/YUGO

Model:P-11K



Electric Fuel Pump-IN LINE
OUTLET SIZE:5/16 IN.
Voltage:12V
Operating current:<1.5A
Package Contents: Pump & Kit
Pressure:5psi-7 psi
INLET TYPE:Strainer
OUTLET TYPE:HOSE BEAD
Flow:>100L/H(1667cc/min,
26.5US Gal/H ,22UK Gal/H)
CAR MODEL:
BMW,BENZ,RENAULT,TOYOTA,MAZD
A,CHEVROLET,LINCOLN
YEAR:76-79

Model:3169582



ELECTRONIC FUEL PUMP
OUTLET SIZE:5/16 IN.
Voltage:12V
Operating current:<1.5A
Pressure:4psi-5psi
Flow:>90L/H(1500cc/min,
24US Gal/H,19.8UK Gal/H)
Voltage:24V
Operating current:<1.7A
Pressure:5psi-7psi
Flow:>120L/H(2000cc/min,
31.8US Gal/H,26.4UK Gal/H)
CAR MODEL:VOLVO
OEM Number 3169582
Application: For Volvo F12 F16

Model:E3309



ELECTRONIC FUEL PUMP
OUTLET SIZE:5/16 IN.
Voltage:12V
Operating current:<1.5A
Pressure:6psi-8psi
Flow:94.5-130L/H
(1575cc/min-2166cc/min,
25-35US Gal/H,20.8-28.6UK Gal/H)
CAR MODEL:CHEVROLET 94-99
CHVROLET TRUCK 94-98
GMC:94-99 GMC TRUCK 94-98
GMC:SAVANA
2500/3500/K1500/K2500/K3500/C3500
SUBURBAN
CHEVROLET:P30.G30.EXPRESS2500.
EXPRESS3500.C1500.C2500.C3500.
K1500.K2500.K3500
ENGINE:6.5L 395Cu.In.V8DLESELOHV
Turbocharged

Model:EP-1000



ELECTRONIC FUEL PUMP
OUTLET SIZE:5/16 IN.
Voltage:12V
Operating current:<1.5A
Pressure:6psi-9psi
Flow:>110L/H
(1833cc/min,29.1US Gal/H,
24.2UK Gal/H)

Model:E-2054



Electric Fuel Pump - IN-LINE
Outlet Size: 3/8 in
Voltage:12V
Operating current:<1.5A
Pressure:3psi-5psi
Inlet Type: Hose Connect
Outlet Type: Hose Connect
Flow:>110L/H((1833cc/min,29.1US
Gal/H,
24.2UK Gal/H)
CAR MODEL:FORD RANGER.
YEAR:87-85. ENGINE:L4-2.3L

Model:A5002



Voltage:12V
Operating current:<1.5A
Pressure:2.5psi-4.5psi
OUTLET SIZE:5/16 IN.
INLET TYPE:Strainer
OUTLET TYPE:HOSE BEAD
Flow:>100L/H (1666cc/min,
26.4US Gal/H,22.00UK Gal/H)
CAR MODEL:ALFA
ROMEO/AMERICANS
MOTORS/AUDI/AUSTIN/AUSTIN
HEALEY/BMW/CHEVROLET/DO
DGE/FERRARI/FIAT

Model:E-2014



Electric Fuel Pump-IN LINE
OUTLET SIZE:1/8 & 3/32
Voltage:12V
Operating current:<1.5A
Package Contents: Pump & Kit
Pressure:2.5psi-4.5psi
Inlet Type: Pipe Thread & Hose Barb
Outlet Type: Pipe Thread & Hose
Flow:>100L/H(1666cc/min,
26.4US Gal/H,22.00UK Gal/H)
CAR MODEL:FORD COURIER
YEARS:72-78

Model:E-2019



Electric Fuel Pump-IN LINE
OUTLET SIZE:1/8 & 3/32
Electric Fuel Pump-IN LINE
Voltage:12V
Operating current:<1.5A
Package Contents: Pump & Kit
Pressure:2.5psi-4.5psi
Inlet Type: Pipe Thread & Hose Barb
Outlet Type: Pipe Thread & Hose
Flow:>100L/H(1666cc/min,26.4US
Gal/H,
22.00UK Gal/H)
CAR MODEL:FORD
COURIER ,MAZDA B2000
YEARS:79-82 YEAR:79-84

Model:E-3015



Electric Fuel Pump-IN LINE
OUTLET SIZE:1/8 & 3/32
Voltage:12V
Operating current:<1.5A
Package Contents: Pump & Kit
Pressure:2.5psi-4.5psi
Inlet Type: Pipe Thread & Hose Barb
Outlet Type: Pipe Thread & Hose
Flow:>100L/H((1666cc/min,
26.4US Gal/H,22.00UK Gal/H)
CAR MODEL:CHEVROLET
LUV YEARS:85-87

Model:E-3158



Electric Fuel Pump-IN LINE
Voltage:12V
Operating current:<1.5A
Pressure:9.5psi-14psi
Inlet Type: O-Ring Seat
Outlet Type: O-Ring Seat
Flow:>130L/H(2166cc/min,
34US Gal/H, 28.60UK Gal/H)
CAR MODEL:CHEVROLET /
GMC /GMC TRUCK

Model:E-8131



Electric Fuel Pump-IN LINE

Outlet Size: 3/8

Voltage:24V

Operating current:<1.5A

Package Contents: Pump & Kit

Pressure:10psi-14psi

Inlet Type: Hose Bead

Outlet Type: Hose Bead

Flow:>130L/H (2166cc/min,
34US Gal/H, 28.60UK Gal/H)

Model:E-8153



Electric Fuel Pump-IN LINE

Outlet Size: M12x1.5

Voltage:12V

Operating current:<1.5A

Package Contents: Pump & Kit

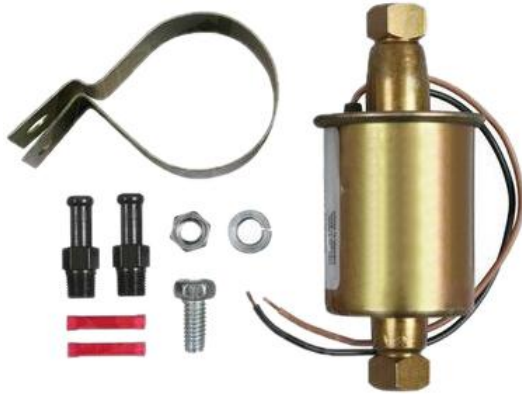
Pressure:10psi-14psi

Inlet Type: Hose Bead

Outlet Type: Threaded O.D.

Flow:>130L/H(2166cc/min,
34US Gal/H, 28.60UK Gal/H)

Model:E-8251



Electric Fuel Pump-IN LINE
Outlet Size: 5/16
Voltage:12V
Operating current:<1.5A
Package Contents: Pump & Kit
Pressure:2.5psi-4.5psi
Inlet Type: Hose Bead
Outlet Type: Hose Bead
Flow:>110L/H (1833cc/min,
29.0US Gal/H ,24.20UK Gal/H)

Model:E-8304



Electric Fuel Pump-IN LINE
Outlet Size: 1/8 & 3/32
Voltage:12V
Operating current:<1.5A
Package Contents: Pump & Kit
Pressure:2.5psi-4.5psi
Inlet Type: Pipe Thread & Hose Barb
Outlet Type: Pipe Thread & Hose
Flow:75L/H-110L/H(1250cc/min-18
33cc/min,
20-29US Gal/H,16.51-24.2UK
Gal/H)
CAR MODEL:MAZDA
626/808/B1600/B1800/RX-2/RX-3/
RX-4/COSMO YEAR:71-82
Part Key: 006201205

Model:E-8318



Electric Fuel Pump-IN LINE
Outlet Size: 1/8 & 3/32
Voltage:12V
Operating current:<1.5A
Package Contents: Pump & Kit
Pressure:2.5psi-4.5psi
Inlet Type: Pipe Thread & Hose Barb
Outlet Type: Pipe Thread & Hose
Flow:75L/H-110L/H(1250cc/min-1833cc/min,20-29USGal/H, 16.51-24.2UK Gal/H)
CAR MODEL:MAZDA / FORD 626/808/B1600/B1800/B2000/RX-2/ /COSMO/COURIER YEAR:71-84
Part Key: 000566809

Model:E-8337

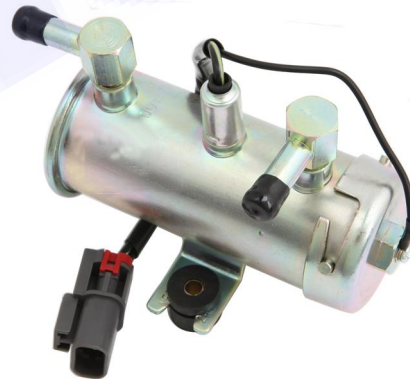
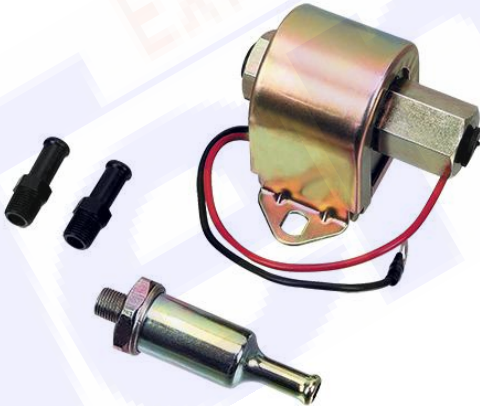
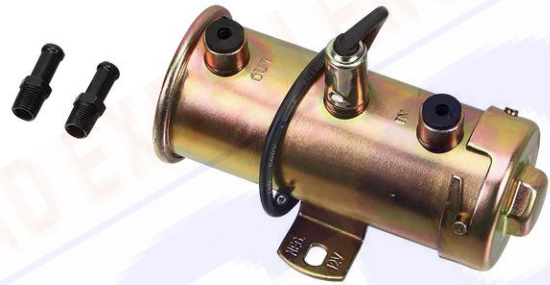
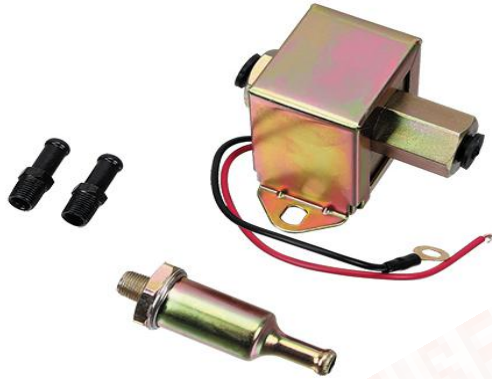


Electric Fuel Pump-IN LINE
Outlet Size: 5/16
Voltage:12V
Operating current:<1.5A
Package Contents: Pump & Kit
Pressure:5psi-9psi
Inlet Type: Hose Bead
Outlet Type: Female Thread
Flow:>110L/H(1833cc/min, 29.0 US Gal/H,24.2 UK Gal/H)

FACET SERIES



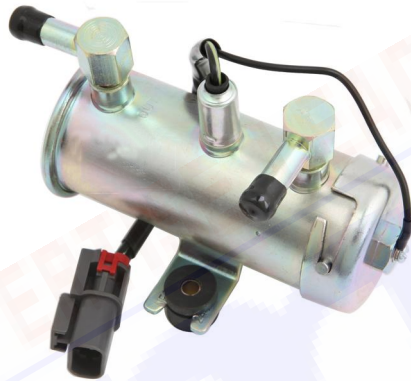
P-501,P-502,P-503,P-809,E-8012M,E-8012M-2,E-8012M-3,476087 ETC.



FACET (ENG) Specification:

Each Product For Your Needs

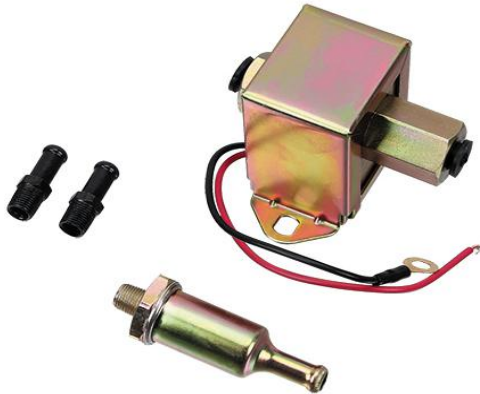
Inlet and
Outlet Size:
5/16 in.



Note: Pls confirm the diameter Inlet and outlet fit for your hose before purchase. Any difference is able to be changed (like inlet and outlet size, colour, connector ETC).

<p>Model:P-501 152-0568</p> 	<p>UNIVERSAL ELECTRIC FUEL PUMP Inlet Size Outlet Size: 5/16 in Voltage:12V Operating current:<1.5A Pressure:3psi-5psi Flow:>70L/H(1166cc/min, 18.5US Go/H,15.4UK Go/H) FACET PUMP CAR MODEL: AUDI/AUSTIN/CHEVROLET/DO DGE/FIAT/HONDA/ISUZU/MAZD A/MG/MITSUBISHI/NISSAN/PLY MOUTH/PORSCHE/SAAB/SURAB U/VW/VOLVO</p>
<p>Model:P-502</p> 	<p>UNIVERSAL ELECTRIC FUEL PUMP Inlet Size Outlet Size: 5/16 in Voltage:12V Operating current:<1.5A Pressure:4psi-6psi Flow:>90L/H(1500cc/min, 23.8 US Go/H,19.7UK Go/H) FACET PUMP CAR MODEL: AUDI/AUSTIN/CHEVROLET/DO DGE/FIAT/HONDA/ISUZU/MAZD A/MG/MITSUBISHI/NISSAN/PLY MOUTH/PORSCHE/SAAB/SURAB U/VW/VOLVO</p>

Model:P-503



UNIVERSAL ELECTRIC FUEL PUMP

Inlet Size Outlet Size: 5/16 in

Voltage:12V

Operating current:<1.5A

Pressure:5psi-7psi

Flow:>100L/H(1666cc/min,
26.5US Gal/H ,22UKGal/H)

FACET PUMP

CAR:AUDI/AUSTIN/CHEVROLET
/DODGE/FIAT/HONDA/ISUZU/M
AZDA/MG/MITSUBISHI/NISSAN/
PLYMOUTH/PORSCHE/SAAB/SU
RABU/VW/VOLVO

Model:P-809



UNIVERSAL ELECTRIC FUEL PUMP

Inlet Size Outlet Size: 5/16 in

Voltage:12V

Operating current:<1.5A

Pressure:4psi-6psi

Flow:>90L/H (1500cc/min,
23.8US Gal/H

19.7UK Gal/H)

FACET PUMP

Model:E-8012M



UNIVERSAL ELECTRIC FUEL PUMP
Inlet Size Outlet Size: 5/16 in
Voltage:12V
Operating current:<1.5A
Pressure:4psi-6psi
Flow:>100L/H (1666cc/min,26.5US
Gal/H ,
22UKGal/H)
FACET PUMP

Model:E-8012M-2



UNIVERSAL ELECTRIC FUEL PUMP
Inlet Size Outlet Size: 5/16 in
Voltage:12V
Operating current:<1.5A
Pressure:4psi-6psi
Flow:>100L/H(1666cc/min,26.5US
Gal/H ,
22UKGal/H)
FACET PUMP CAR
MODEL:NISSAN

Model:E-8012M-3



UNIVERSAL ELECTRIC FUEL PUMP

Inlet Size Outlet Size: 5/16 in

Voltage:24V

Operating current:<1.5A

Pressure:6psi-8psi

Flow:>120L/H(2000cc/min,

31.7US Gal/H ,

26.3UK Gal/H)

FACET PUMP

Model:476087



UNIVERSAL ELECTRIC FUEL PUMP

Inlet Size Outlet Size: 5/16 in

Voltage:12V

Operating current:<1.5A

Pressure:4psi-6psi

Flow:>100L/H(1666cc/min,

26.5US Gal/H,22UK Gal/H)

FACET PUMP

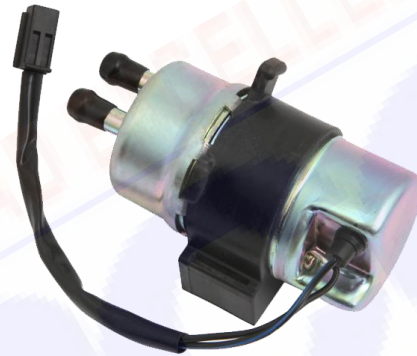
CAR MODEL:RANGE ROVER

MOTORCYCLE SERIES



PP-28,PP-29,PP-30,PP-34,PP-40,PP-43,PP-114,PP-116,PP-117,PP-129,PP-138,

PP-158 ETC.



PP Specification:

Each Product For Your Needs

Inlet and
Outlet Size:
3/8 in.



Note: Pls confirm the diameter Inlet and outlet fit for your hose before purchase. Any difference is able to be changed (like inlet and outlet size, colour, connector ETC).

Model Number PP-114



FUEL PUMP

Inlet Outlet Size: 3/8 in

Voltage: 12V

Operating current: <1.5A

Pressure:0.015-0.025KG/CM2 ,
2.18PSI -3.63PSI

Flow:>70 L/H

(1166CC/MIN,18.5US Gal/H,
15.4UK Gal/H)

Model Number PP-116



FUEL PUMP

Inlet Outlet Size: 6/25 in

Voltage: 12V

Operating current: <1.5A

Pressure:0.015-0.025KG/CM2 ,
2.18PSI -3.63PSI

Flow:>60 L/H

(1166CC/MIN,18.5US Gal/H,
15.4UK Gal/H)

Model :PP-28



FUEL PUMP

Inlet Outlet Size: 5/16 in

Voltage: 12V

Operating current: <1.7A

Pressure: 0.015-0.03KG/CM2,
2.18PSI-4.35PSI

Flow:> 60L/H(1000CC/MIN,
15.9US Gal/H,13.2UK Gal/H)

Model :PP-29



FUEL PUMP

Inlet Outlet Size: 6/25 in

Voltage: 12V

Operating current:<1.5A

Pressure:0.015-0.025KG/CM2,
2.18PSI -3.63PSI

Flow:>60L/H
(1000CC/MIN,15.9US Gal/H,
13.2UK Gal/H)

Model : PP-30



FUEL PUMP

Inlet Outlet Size: 5/16 in

Voltage:12V

Operating current: <1.5A

Pressure:0.015-0.025KG/CM2 ,
2.18PSI -3.63PSI

Flow:> 60L/H (1000CC/MIN,
15.9US Gal/H,13.2UK Gal/H)

CAR MODEL:SUZUKI AN

Burgman, VL Intruder,YAMAHA XP

T-Max (SJ011),XJ N,XJ S Diversion

(4EB1),XVS Drag Star

(4XR/4VR),XVS Drag Star Classic

(VM022/VM025),XVS Drag Star / V
Star Classic

ENG:250cc-1500cc

Model:PP-34



FUEL PUMP

Inlet Outlet Size: 6/25 in

Voltage:12V

Operating current: <1.5A

Pressure:

0.015-0.025KG/CM2 ,2.18PSI
-3.63PSI

Flow:> 60 L/H (1000CC/MIN,
15.9US Gal/H,13.2UK Gal/H)

Model:PP-40



FUEL PUMP

Inlet Outlet Size: 6/25 in

Voltage:12V

Voltage:12V

Operating current: <1.5A

Pressure: 0.015-0.025KG/CM2 ,
2.18PSI -3.63PSI

Flow:> 60 L/H (1000CC/MIN,
15.9US Gal/H,13.2UK Gal/H)

Model Number PP-129



FUEL PUMP

Inlet Outlet Size: 5/16 in

Voltage: 12V

Operating current: <1.5A

Pressure:0.015-0.025KG/CM2 ,
2.18PSI -3.63PSI

Flow:>70 L/H
(1166CC/MIN,18.5US Gal/H,
15.4UK Gal/H)

Model Number PP-117



FUEL PUMP

Voltage: 12V

Operating current: <1.7A

Pressure: 0.015-0.03KG/CM² ,
2.18PSI-4.35PSI

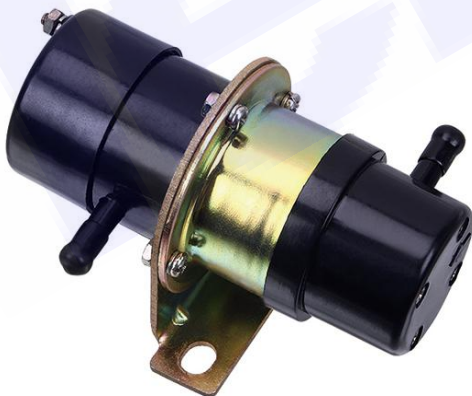
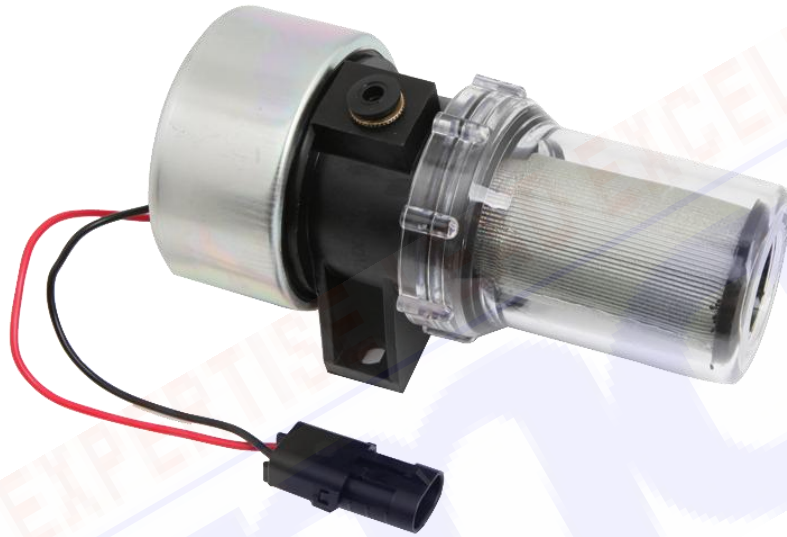
Flow:> 60L/H (1000CC/MIN)

15.9US Gal/H,13.2UK Gal/H

CONSTRUCTION SERIES

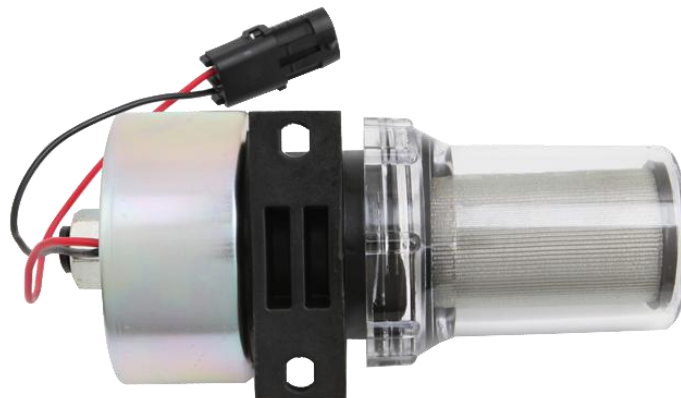
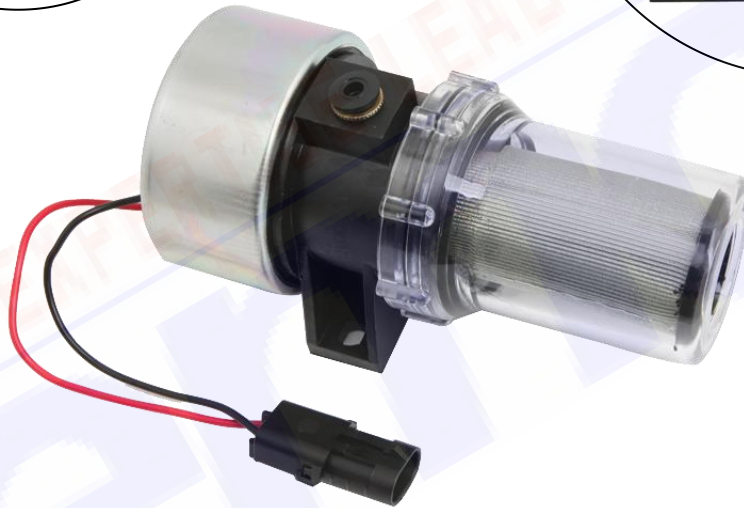


41-7059 / 40223, 45995896, MITSUBA EP-32 ETC.



Specification:

Each Product For Your Needs



Model:41-7059 / 40223



DLESEL PUMP

Inlet Outlet Size: 5/16 in

Voltage:12V

Operating current:<1.5A

Pressure:6psi-8psi

Flow:>120L/H(2000cc/min,
31.7 US Gal/H,26.4 UK Gal/H)

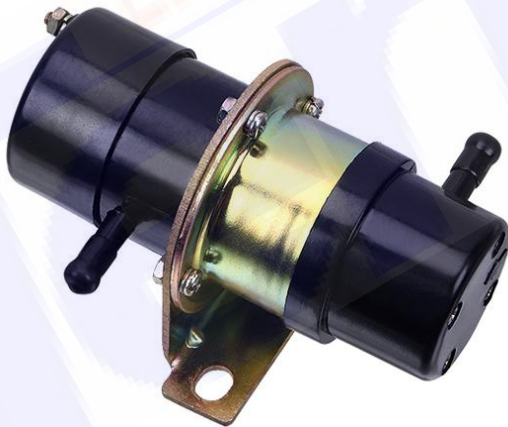
OEM NO:41-7059/40223,

30-01108-03 30-01108-02

30-01108-01 291-001-456-7295

Application: Thermo King,Carrier

Model:45995896



FUEL PUMP

Inlet Outlet Size: 5/16 in

Voltage:12V

Operating current:<1.7A

Pressure:2psi-4psi

Flow:>70L/H (1166cc/min,
18.5 US Gal/H, 15.5 UK Gal/H)

Model: MITSUBA EP-323



FUEL PUMP

Inlet Outlet Size: 5/16 in

Carburetor engines

Voltage: 12V

Operating current: <1.6A

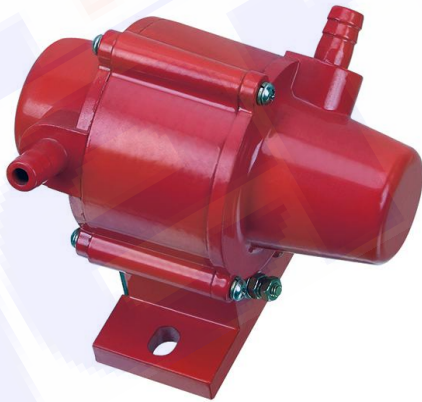
Pressure: 4psi-5psi

Flow: >65L/H (1083cc/min,

17.2 US Gal/H,

14.2 UK Gal/H)

Model FW-59



DIESEL PUMP

Voltage: 12V

Operating current: <1.5A

Pressure: 4psi-6psi

Flow: >70L/H (1166cc/min,

18.5 US Gal/H, 15.5 UK Gal/H)