



## M01

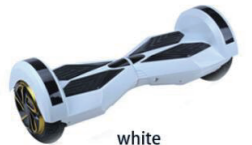
Unit size (mm): 585\*185\*178  
Material : ABS+UV  
Max Load(kg) : 120  
Max Speed(km/h):10  
Max Mileage(km): 15-20  
Battery: 36V,4.4 AH (LG or Samsung)  
Motor Power(w): 350\*2  
Max Tilt Angle: ≤ 17°  
Net Weight(kg): 10.5  
The Charging Time(hr): 1-2  
Pedal Distance From Ground(mm):46  
Tire size:6.5inch(171mm)  
Charging Voltage: AC 110-240V /50-60Hz  
Color: red ,green, blue,silver and so on .  
packaging size(mm): 660\*250\*260  
water and dust proof: IP54





## M03

Unit size (mm): 590\*230\*210  
 Material : ABS+UV  
 Max Load(kg) : 120  
 Max Speed(km/h): 10  
 Max Mileage(km):15- 20  
 Battery: 36V,4.4 AH (LG or Samsung)  
 Motor Power(w):350\*2  
 Max Tilt Angle: ≤ 17°  
 Net Weight(kg): 13  
 The Charging Time(hr): 1-2  
 Pedal Distance From Ground(mm): 46  
 Tire size:8 inch  
 Support BT Speaker and with LED light  
 Charging Voltage: AC 110-240V /50-60Hz  
 Color: red ,blue ,white and so on .  
 packaging size(mm): 700\*280\*300  
 water and dust proof: IP54



white



blue



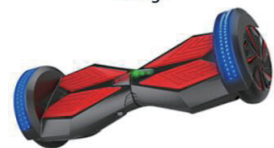
green



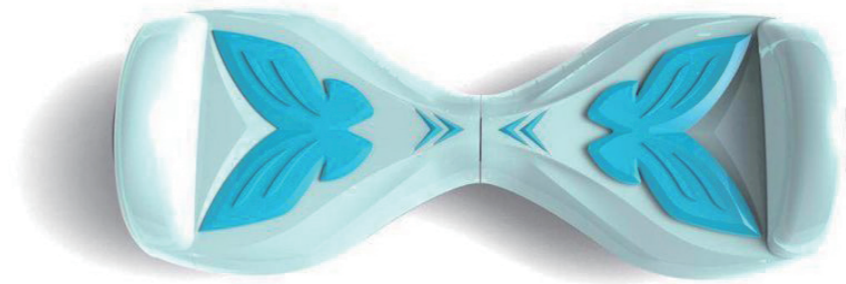
orange



red



black



## M06

Unit size (mm): 522\*188\*154  
 Material : ABS+UV  
 Max Load(kg) : 60  
 Max Speed(km/h):5  
 Max Mileage(km): 10  
 Battery: 36V,2.2AH (LG or Samsung)  
 Motor Power(w): 250x2  
 Max Tilt angle: ≤ 10°  
 Net Weight(kg): 4.5  
 The Charging Time(hr): 1-1.5(hr)  
 Pedal Distance From Ground(mm):23  
 Tire size:4.5inch  
 Charging Voltage: AC 110-240V /50-60Hz  
 Color: red ,green, blue, and so on .  
 Control system:JC Rohot  
 water and dust proof: IP54





## M08

Unit size (mm): 590\*230\*210  
 Material : ABS+UV  
 Max Load(kg) : 120  
 Max Speed(km/h): 10  
 Max Mileage(km):15- 20  
 Battery: 36V,4.4 AH (LG or Samsung)  
 Motor Power(w):350\*2  
 Max Tilt Angle: ≤ 17°  
 Net Weight(kg): 13  
 The Charging Time(hr): 1-2  
 Pedal Distance From Ground(mm): 46  
 Tire size:10 inch  
 Charging Voltage: AC 110-240V /50-60Hz  
 Color: red ,blue ,white and so on .  
 packaging size(mm): 715\*345\*340  
 water and dust proof: IP54

## M018

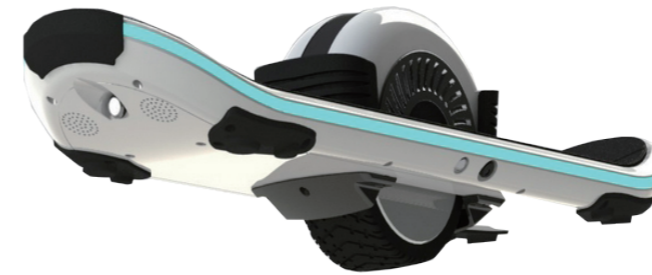
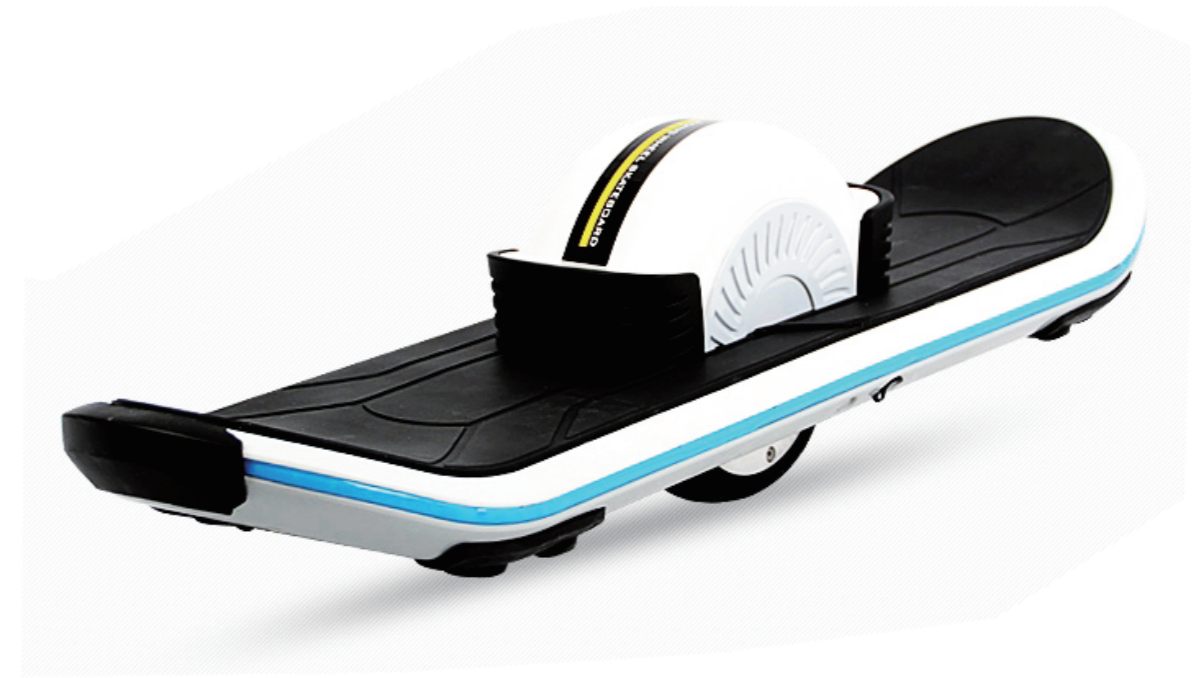


Unit size(mm):590x230x210  
 Material:ABS+PC  
 Max Load(kg):120  
 Max Speed(km):10-18  
 Battery:36V,4.4AH(LG or Samsung )  
 Motor Power(w):350\*2  
 Max Tilt Angle:≤ 30°  
 Net Weight(kg):10  
 The Charging Time(hr):1-2  
 Pedal Distance From Ground(mm):46  
 Tire size:10inch  
 Charging Voltage:AC 110-240V/50-60Hz  
 Color:red,blue,white,black,green  
 Packing size(mm):715x345x340  
 Water and dust proof:IP54



## M09

Unit size(mm):570x180x180  
 Material:ABS+PC  
 Max Load(kg):120  
 Max Speed(km):10-18  
 Battery:36V,4.4AH(LG or Samsung )  
 Motor Power(w):350\*2  
 Max Tilt Angle:≤ 30°  
 Net Weight(kg):10  
 The Charging Time(hr):1-2  
 Pedal Distance From Ground(mm):48  
 Tire size:6.5inch  
 Charging Voltage:AC 110-240V/50-60Hz  
 Color:red,blue,white,black,green  
 Packing size(mm):650x230x245  
 Water and dust proof:IP54



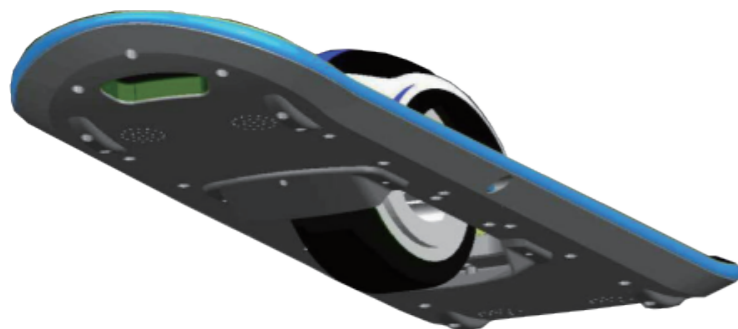
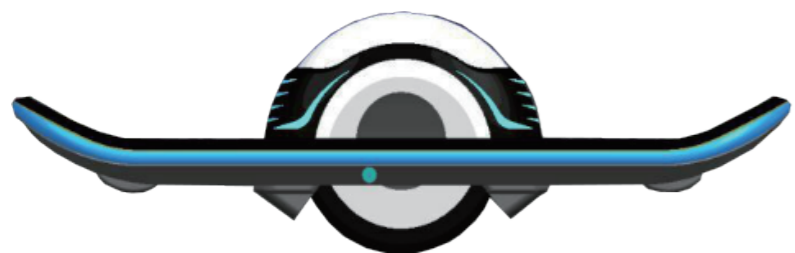
## GK01

Color:Black and white  
 Max speed:18km/h  
 Max running distance:16km  
 Max climbing angle:20°  
 Battery:36V 4.4AH lithium battery  
 Permitted using:Temperature-10 ℃-40 ℃  
 Charging time: 60minutes  
 Motor size:6.5 inch; Motor power:500W  
 LED light :Yes; Blue tooth:Yes  
 Brake way: body control  
 Principle of control:Gyroscopic Theory  
 Charge voltage: AC100-220V/50-60HZ  
 Net weight:10.5kg; Gross weight:13kg  
 Unit size:823.5\*230.3\*210.9mm  
 Ground clearance:60.9mm  
 Package size:920x345x290mm



## GK02

Color:Black and white  
Max speed:18km/h  
Max running distance:16km  
Max climbing angle:20°  
Battery:36V 4.4AH lithium battery  
Permitted using:Temperature-10℃-40℃  
Charging time: 60minutes  
Motor size:10inch; Motor power:500W  
LED light :Yes; Blue tooth:Yes  
Brake way: body control  
Principle of control:Gyroscopic Theory  
Charge voltage: AC100-220V/50-60HZ  
Net weight:14kg; Gross weight:16kg  
Unit size:823.5\*245.3\*210.9mm  
Ground clearance:60.9mm  
Package size:920x345x290mm



## C01

Max speed:12km/h  
Running distance:20-25km  
Max load:120kg  
Net weight:5kg  
Motor:180W  
Battery:Samsung battery 36V/9A  
Front tire size:85mm  
Unit size:380\*280\*90mm



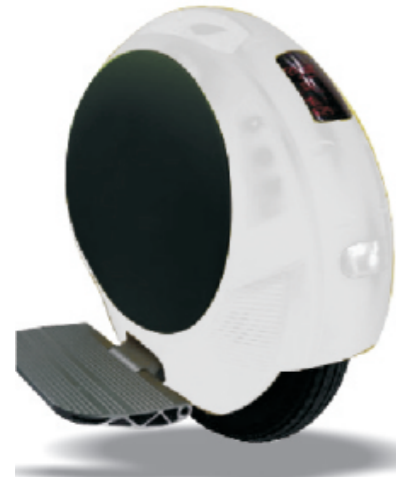


## G03

Material:ABS material+UV  
 Pedal:Aviation Aluminium Materials  
 Color:Black/White/Blue/Red/Pink/Gold/Silver/  
 Yellow and more other colors  
 Battery capacity:132wh  
 Battery voltage:60V  
 Battery power:350W  
 Max cruise speed:18Km/h  
 The charging time:2.5hr  
 Specification: 460\*540\*180mm  
 Weight:9.8Kg  
 The max carried weight:120Kg  
 Tyre size:14 inch  
 The number of LED:4 LED  
 Climbing Angle:45°  
 Waterproof switch:IP56  
 Function: bluetooth to play music

## G04

Specification: 450\*395\*160mm  
 Color:Black/White/Blue/Red/Orange/  
 Green and more other colors  
 Weight:9.8kg  
 Petal distance from the ground:112mm  
 The max carried weight:120kg  
 Max cruise speed:25km/h  
 Climbing Angle:≤20°  
 Battery capacity:132/264wh  
 Battery power:350w  
 Battery voltage:AC220V50-60HZ  
 The charging time:1hr  
 Tilt protection: In both left and right 45 Degrees  
 Working Temperature:-10 C~40 C  
 Bluetooth speakers,Colorful lights,Automatic induction lamp



## G05

Unit size (mm): 470\*400\*150/470\*400\*340  
 Material : ABS+UV  
 Max Load(kg) : 120  
 Max Speed(km/h): 18  
 Max Mileage(km): 15-60  
 Battery capacity(wh): 132 SAMSUNG BRAND  
 ( 260WH/340WH optional)  
 Motor Power: Magnetic levitation motor 350W (Max 800W)  
 Pedal: Aluminum  
 Climbing Angle: ≤ 20°  
 Net Weight(kg): 10.9-12.6  
 The Charging Time(hr): 1.5 ( 1 hour can reach 80%)  
 Tire size:14 inch(the tire contact area is large ,can stand by itself )  
 Built-in LED light  
 Water Proof Switch: IP56  
 Color: black,white

## B01

Max speed:≤20km  
 Max load:150kg  
 Foldable time:1 S  
 Charging time:5 hours  
 Gross Weight:12kg/Net weight:8kg  
 Speed up control:Instrument speed up  
 Running range:30km  
 Frame material:High-carbon steel  
 Motor:250W  
 Battery capacity:18.5V 10AH  
 Tire size:8 inch  
 Package Size:106.7cmx21.2cmx46.6cm





## B02

Max speed:≤25km  
Max load:150kg  
Charging time:5-6 hours  
Gross Weight:19kg  
Speed up control:Instrument speed up  
Running range:25km(standard model)  
Running range:35km(high standard model)  
Frame material:High-carbon steel  
Battery capacity:36V  
Charging voltage:100V-240V AC  
Unit size:938mmx1188mm  
Package Size:100cmx30cmx48cm



## B04

Specification:110cmx18cmx95cm  
Max speed:20km-25km  
Max load:150kg  
Charging time:4-6hours  
Option: Saddle  
Speed up control:Instrument speed up  
Running range:25km  
Weight:11.5kg  
Frame material:High-carbon steel  
Battery:24V 5A  
Motor:24V 250W  
Tire size:6 inch



## B03

Max speed:35km/h  
Max load:120kg  
Gross Weight:17kg/Net weight:13.6kg  
Charging time:4-6hours  
Two wheel distance:800mm  
Speed up control:Instrument speed up  
Frame material:High-carbon steel  
Battery:Lithium battery 36V  
Battery capacity:10AH(25-30km) 18.4AH(45-50km)  
Motor:DC brushless  
Tyre size:8 inch / 10 inch  
Tyre material: Front pump t, back solid tyre  
Break system:drum brake  
Unit size:98x54x120cm  
Package size:103cmx24cmx36cm  
Color option:RED/BLACK/GOLD/SILVER



## B06

Specification:198\*55\*120cm  
 Front and rear wheel center distance: 800mm  
 Scooter weight: Including battery 15.5kg  
 Carried weight: 150KG  
 Max cruise speed: 30-35km/h  
 The endurance mileage: 40-60km  
 Battery type: Lithium-ion battery  
 Normal voltage: 36V; Battery capacity: 12.8AH  
 Motor type: brushless DC motor  
 Rated output power: 350W  
 Maximum speed: 900r/min; Rated voltage: 36V  
 Type: front wheel free pneumatic tire / with shock,  
 rear pneumatic tire  
 Size: 10 inches; Input voltage: AC220V  
 Output voltage: 2A; Charge time: 4—4.5hr



## F01

Unit Size (mm): 520\*245\*1150  
 Net Weight(kg): 13.5  
 Gross Weight(kg): 16  
 Tire Size: 8 inch  
 Max Carried Weight(kg): 120  
 Max Tilt angle: ≤ 40°  
 Max Speed(km/h): 20  
 Max Mileage(km): 25  
 Lithium Battery: 36V (Chinese battery /LG battery/Samsung battery)  
 Pedal Distance From Ground(mm):144  
 Base Distance From Ground(mm): 100  
 Color: White, Black,Blue  
 Motor Power(w): 350\*2  
 The Charging Time(hr): 1.5  
 Charging Voltage: AC 110-240V /50-60Hz  
 Carton size(mm): 590\*320\*320mm

## B07

Frame material: High-carbon steel  
 Battery cartridge material:ABS+PP  
 Pedal:High strength rust-proof iron pedal  
 Tire material:Durable rubber  
 Motor type:12V/250W,Brush  
 Max speed:15 km/h  
 Battery :12V/20AH  
 Battery type:Lead-acid  
 Power adapter:12V/4A  
 Charger time:4-5 h  
 Running range:15 km  
 Net weight:20 kg  
 Load:90 kg  
 Tire size:8 inch (200mm)  
 Folding:Yes

Folding device:Gas spring  
 Brake:Drum brake  
 Climbing ability:15 degree  
 Part:No front lighting and loudspeaker  
 Support:No electric quantity show



## F02

Size:680\*430\*460mm  
 Max cruise speed:18km/h  
 Carried weight:125kg  
 The endurance mileage:30km  
 Net weight:48kg  
 Climbing Angle:≤35°  
 Ground height:27cm  
 The maximum height:160cm  
 Standard tyre pressure:100kpa  
 Minimum turning:0  
 Power indicator:Digital power display  
 Battery:240 min full charged  
 The handlebar height:800-1100cm  
 Tyre:17"Vacuum puncture proof tyre

Power:Brush motor  
 Battery:Lead acid12A  
 Voltage:36v  
 Motor:500W\*2  
 Color:Black/White/Red/Yellow





## F03

Unit Size (mm): 680\*430\*460  
 Net Weight(kg): 60  
 Gross Weight(kg): 68  
 Tire Size: 19 inch  
 Max Carried Weight(kg): 125  
 Max Tilt angle: ≤ 40°  
 Max Speed(km/h): 18  
 Max Mileage(km): 20  
 Battery : Lead acid 12Ah  
 Pedal Distance From Ground(mm):270  
 Base Distance From Ground(mm): 150  
 Color: White, Black,Blue  
 Motor Power(w): 500\*2  
 The Charging Time(hr): 1.5  
 Charging Voltage: AC 110-240V /50-60Hz  
 Carton size(mm): 860\*525\*725

## F04

Product name:17inch handle electric hoverboard  
 Tyre size:17inch  
 Color:white,black,blue,orange  
 Netweight:35KG/Gross weight:40KG  
 Battery:60V 8.8Ah (Samsung battery option)  
 Work temperature:-20°--60°  
 Motor:350Wx2; Voltage :110v-240v  
 Max speed :20km/h; Max load :130kg  
 Full charge running distance:40-100km  
 Climbing capability:≤30°  
 Charging time:90-150(mins)  
 Pedal height:22.3cm; Height of shaft:93cm  
 Remote control:optional  
 Low battery protection:remind you when battery less than 20%  
 Packing size:600\*250\*260mm



## F05



Size:600\*400\*420mm  
 Max cruise speed:16km/h  
 Carried weight:90kg  
 The endurance mileage:20km  
 Net weight:16kg  
 Climbing Angle:≤35°  
 Ground height:23cm  
 The maximum height:95-170cm  
 Standard tyre pressure:250kpa  
 Minimum turning:0  
 Power indicator:Digital power display  
 Battery:180-240 min full charged  
 The handlebar height:800-1100cm  
 Tyre:17"Vacuum puncture proof tyre

Power:Brush motor  
 Battery:Lead acid8A  
 Voltage:36v  
 Motor:500W\*2  
 Color:Black/White/Red/Yellow

# E01



Color:Blue /black/red/green  
Max speed:25km/h  
Max running distance:25-40km  
Max climbing angle:20°  
Max load:120kg  
Battery:36V 8AH lithium battery  
Permitted using:Temperature-10℃-40℃  
Charging time: 6-8 hours  
Motor size:14inch/12inch  
Motor power:180-240W  
LED light :Yes  
Frame material:High-carbon steel  
Charge voltage: AC100-220V/50-60HZ  
Net weight:15kg  
Gross weight:19kg  
Unit size:110\*100\*84cm(H\*L\*W)  
Foldable size:110\*70\*50cm(H\*L\*W)

# E02



Color:Blue /black/red/green  
Max speed:20km/h  
Max running distance:25-30km  
Max climbing angle:20°  
Max load:120kg  
Battery:36V 8AH lithium battery  
Permitted using:Temperature-10℃-40℃  
Charging time: 6-8 hours  
Motor size:12inch  
Motor power:180-240W  
LED light :Yes  
Frame material:High-carbon steel  
Charge voltage: AC100-220V/50-60HZ  
Net weight:13kg  
Gross weight:17kg  
Unit size:100\*95\*80cm(H\*L\*W)  
Foldable size:100\*60\*40cm(H\*L\*W)

# H01



Product size:1759\*750\*700mm  
Handel height:adjustable  
Two wheel distance:1296mm  
Net weight:50kg/Goss weight:64kg;Type size:18x9.5inch  
Frame:38mm diameter and 2mm thick  
Control mode:Power/long distance/High speed  
Brake mode:Front brake disc/back brake disc+EABS  
Max climbing angle:20°  
Brake distance: 1.2m(20km/h dry road) 3.1m(20km/h wet road)  
Max running distance:80km; Max load:200kg  
Battery:Lithium battery 60V 12AH;Motor:800W brushless DC  
Controler: Limited current protection≤25A low-voltage protection 52V  
Charger: Input AC 140-240V 50/60HZ Output DC 71.4V  
Equipment:  
Horn/Wireless Security Alarm System/Keyless start system/  
Quick finding/APP control system/battery indicating display/  
fault detect/Induction unlock/Mobile phone running indicator/Electric lock/

# P01



Start mode:Remote control  
Carry mode:Quick dismantling system  
Maximum size:1550(L)×930(W)×750(H)mm;Transport weight:62KG  
Curb weight:56KG;Maximum load:100KG  
Seat height:350mm;Minimum distance:40mm  
Drive system:High speed Brushless motor (custom power, speed)  
Power control system:Brushless Controller (Customized startup mode)  
Rated power:1000W; Rated current:≤27.6A  
Maximum axle torque:17.34 N.m (1.76Kgm)  
Adapter battery:48V12AH Replaceable battery pack weight 18kg±0.5kg  
Time required for charging:6 hours  
Power drift battery life:Typical value\* 40mins \*tarmac road & Load 75KG  
Transmission system:6:1 Planet gear retarder & Maintenance free Chain  
Max speed:45km/h  
Instrument display:Drifting; Residualpower; Dump energy; Speed display;  
Driving range; Drift range  
Lighting system:Remote control: Front light, Wide light.  
Seat:Custom seat  
Handlebar specification:580mm×22.2mm  
Steering system:Custom 34mm bearing steering system  
Brake system:160mm Disc brake  
Main body material:High strength steel  
Housing material:ABS