



30pcs Cap Type Oil Filter Wrench Set
30件套碗型滤清器扳手

- **Size:** 66mm-6F, 65mm-14F, 65/67mm-14F, 68mm-14F, 73mm-14F, 74mm-15F, 74/76mm-15F, 76mm-12F, 76mm-14F, 75/77mm-15F, 76mm-30F, 76mm-8F, 78mm-15F, 80mm-15F, 80/82mm-15F, 86mm-16F, 86mm-18F, 90mm-15F, 92mm-10F, 93mm-15F, 93mm-36F, 93mm-45F, 95mm-15F, 96mm-18F, 100mm-15F, 106mm-15F, 108mm-15F, 108mm-18F, 3-jaw wrench 65-120mm, Adaptor 1/2(F) N 3/8(M) Square drive Tool

- **3/8 "drive**
Material: Carbon Steel

| ITEM NO | SIZE mm | QTY./CARTON set | PACKING | G.W/N.W kg | MEAS cm |
|---------|---------|-----------------|-------------|------------|------------|
| WS2700 | / | 4 | shrink film | 24.8/26.3 | 61x36x45.5 |



11pcs Cap Type Oil Filter Wrench Set
11件套碗型机油滤清器扳手

- **Size:** 65/67mm-14F, 68mm-14F, 74/76mm-15F, 76mm-30F, 76mm-14F, 80mm-15F, 86mm-16F, 93mm-15F, 93mm-36F, 100mm-15F, Adaptor 1/2(F) N 3/8(M) Square drive Tool

- **3/8 "drive**
Material: Carbon Steel

| ITEM NO | SIZE mm | QTY./CARTON set | PACKING | G.W/N.W kg | MEAS cm |
|---------|---------|-----------------|-------------|------------|------------|
| WS2703 | / | 5 | shrink film | 13/11.2 | 36.5x31x27 |



15pcs Cap Type Oil Filter Wrench Set
15件套碗型机油滤清器扳手

- **Size:** 65mm-14F, 65/67mm-14F, 68mm-14F, 74mm-15F, 74/76mm-15F, 75/77mm-15F, 76mm-30F, 76mm-14F, 80mm-15F, 80/82mm-15F, 90mm-15F, 93mm-15F, 93mm-36F, 100mm-15F, Adaptor 1/2(F) N 3/8(M) Square drive Tool

- **3/8 "drive**
Material: Carbon Steel

| ITEM NO | SIZE mm | QTY./CARTON set | PACKING | G.W/N.W kg | MEAS cm |
|---------|---------|-----------------|-------------|------------|----------|
| WS2701 | / | 4 | shrink film | 13.6/14.5 | 38x35x34 |



9pcs Cap Type Oil Filter Wrench Set
9件套镀铬滤清器扳手

- **Size:** 65mm-14F, 67mm-14F, 74mm-14F, 79mm-15F, 73mm-14F, 92mm-15F, 95mm-15F, 98mm-15F, 101mm-15F

- **1/2 "drive**
Thickness: 2.0mm
Material: Carbon Steel

| ITEM NO | SIZE mm | QTY./CARTON set | PACKING | G.W/N.W kg | MEAS cm |
|---------|---------|-----------------|-------------|------------|------------|
| WS2704 | / | 5 | shrink film | 14.8/12.3 | 36.5x31x27 |

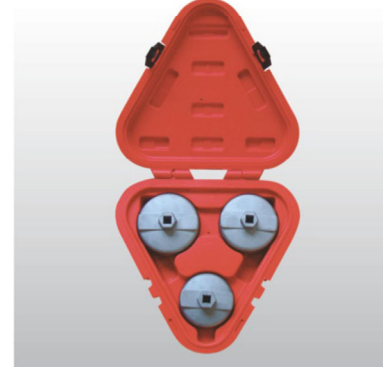


13pcs Cap Type Oil Filter Wrench Set
13件套碗型滤清器扳手

- **Size:** 66mm-6F, 76mm-8F, 76mm-12F, 86mm-16F, 86mm-18F, 92mm-10F, 93mm-45F, 96mm-18F, 106mm-15F, 108mm-15F, 108mm-18F, 3-jaw wrench 65-120mm, Adaptor 1/2(F) N 3/8(M) Square drive Tool

- **3/8 "drive**
Material: Carbon Steel

| ITEM NO | SIZE mm | QTY./CARTON set | PACKING | G.W/N.W kg | MEAS cm |
|---------|---------|-----------------|-------------|------------|----------|
| WS2702 | / | 5 | shrink film | 13.8/14.9 | 38x35x34 |



3pcs Aluminium Cup Type Oil Filter Wrench
三件套铝合金碗型滤清器扳手

- **Size:** 64mm-14F, 74mm-14F, 76mm-14F

- **Material:** Aluminium Alloy

| ITEM NO | SIZE mm | QTY./CARTON set | PACKING | G.W/N.W kg | MEAS cm |
|---------|---------|-----------------|-------------|------------|------------|
| WS2705 | / | 5 | shrink film | 4.05/5.05 | 37.5x26x26 |

OIL FILTER WRENCH



■ **23pcs Aluminium Cap Type Oil Filter Wrench Set**
23件套铝合金碗型滤清器扳手

- **Size:** 65mm-14F 67mm-14F 74mm-14F 75mm-15F
74mm-8F 74mm-15F 73mm-14F 75mm-12F
74mm-15F 79mm-15F 73mm-15F 74mm-14F
84mm-18F 89mm-15F 91mm-15F 92mm-15F
95mm-15F 76mm-12F 80mm-15F 101mm-15F
92mm-15F
one 1/2" Ratchet wrench
one Ring spanner

- **1/2 " drive**
Material: Aluminium Alloy

| ITEM NO | SIZE mm | QTY./CARTON set | PACKING | G.W/N.W kg | MEAS cm |
|---------|---------|-----------------|-------------|------------|----------|
| WS2706 | / | 4 | shrink film | 23/22 | 47x45x39 |



■ **6pcs Nylon Cap Oil Filter Wrench**
6件套尼龙碗型滤清器扳手

- **Size:** 65/67-14F 74/76-15F
76-14F 93-15F
76/80/93-15/30/36F
Adaptor 1/2(F) N 3/8(M) Square drive Tool

- **3/8 "drive**
Material: Nylon

| ITEM NO | SIZE mm | QTY./CARTON set | PACKING | G.W/N.W kg | MEAS cm |
|---------|---------|-----------------|-------------|------------|------------|
| WS2707 | / | 5 | shrink film | 6.5/5 | 36.5x31x27 |

OIL FILTER WRENCH



CAP TYPE OIL FILTER WRENCH
碗型机油滤清器扳手

**THOROUGHLY
TEMPERED**



ITEM NO:W26400

Material: Carbon Steel
Thickness: 1.2mm

Size:

66mm-6F, 65mm-14F, 65/67mm-14F
68mm-14F, 73mm-14F, 74mm-15F
74/76mm-15F, 76mm-12F, 76mm-14F
75/77mm-15F, 76mm-30F, 76mm-8F
78mm-15F, 80mm-15F, 80/82mm-15F
86mm-16F, 86mm-18F, 90mm-15F
92mm-10F, 93mm-15F, 93mm-36F
93mm-45F, 95mm-15F, 96mm-18F
100mm-15F, 106mm-15f, 108mm-15F
108mm-18F

OIL FILTER WRENCH

OIL FILTER WRENCH



■ Thickening Cap Type Oil Filter Wrench

No.: W26200
Size: THK: 2mm



■ Nylon Cap Type Oil Filter Wrench

尼龙碗型机油滤清器扳手

| ITEM NO | SIZE mm | Q'TY PCS | PACKING | G.W/N.W kg | MEAS cm |
|---------|--------------------|----------|---------|------------|----------------|
| N26305 | 65/67-14F | 12/72 | In bulk | 7.9/8 | 34.5x31.5x26.5 |
| N26306 | 76-15F | 12/72 | In bulk | 8.3/10.4 | 34.5x31.5x26.5 |
| N26307 | 74/76-15F | 12/72 | In bulk | 8.3/10.4 | 34.5x31.5x26.5 |
| N26308 | 93-15F | 12/72 | In bulk | 9.2/11.5 | 34.5x31.5x26.5 |
| N26309 | 76/80/93-15/30/36F | 12/72 | In bulk | 11.8/13.2 | 34.5x31.5x26.5 |



■ Thickening Cap Type Oil Filter Wrench

Material: Carbon Steel
surface treatment for chromium plating

| ITEM NO | SIZE mm | Q'TY PCS | PACKING | G.W/N.W kg | MEAS cm |
|---------|---------|----------|--------------|-------------|----------|
| W26201 | 65-14F | 10/40 | suction card | 7/8.3 | 45x30x41 |
| W26202 | 67-14F | 10/40 | suction card | 7.2/8.5 | 45x30x41 |
| W26203 | 74-14F | 10/40 | suction card | 8/9.3 | 45x30x41 |
| W26204 | 79-15F | 10/40 | suction card | 8.64/9.94 | 45x30x41 |
| W26205 | 73-14F | 10/40 | suction card | 8.4/9.7 | 45x30x41 |
| W26209 | 92-15F | 10/40 | suction card | 11.24/12.54 | 45x30x41 |
| W26210 | 95-15F | 10/40 | suction card | 11.4/12.7 | 45x30x41 |
| W26213 | 98-15F | 10/40 | suction card | 12/13.3 | 45x30x41 |
| W26214 | 101-15F | 10/40 | suction card | 12.2/13.5 | 45x30x41 |

■ Cap Type Oil Filter Wrench

碗型机油滤清器扳手

Material: Carbon Steel
Thickness: 1.2mm

| ITEM NO | SIZE mm | Q'TY PCS | PACKING | G.W/N.W kg | MEAS cm |
|---------|-----------|----------|---------------|------------|----------------|
| W26401 | 66-6F | 12/144 | Label/in bulk | 14.3/15.5 | 34.5x31.5x26.5 |
| W26402 | 65-14F | 12/144 | Label/in bulk | 14.9/16.2 | 34.5x31.5x26.5 |
| W26403 | 65/67-14F | 12/144 | Label/in bulk | 15.1/16.6 | 36.5x31.5x28 |
| W26404 | 68-14F | 12/144 | Label/in bulk | 13.2/14.5 | 31.5x26x18.5 |
| W26405 | 73-14F | 12/144 | Label/in bulk | 15.5/16.8 | 36.5x31.5x28 |
| W26406 | 74-15F | 12/144 | Label/in bulk | 17.5/19.2 | 36.5x31.5x28 |
| W26407 | 74/76-15F | 12/144 | Label/in bulk | 17/18.5 | 36.5x31.5x28 |
| W26408 | 76-14F | 12/144 | Label/in bulk | 17/18 | 36.5x31.5x28 |
| W26409 | 76-12F | 12/72 | Label/in bulk | 7.6/8.8 | 36.5x31.5x28 |
| W26410 | 75/77-15F | 12/72 | Label/in bulk | 8.6/9.8 | 31.5x27.5x19.5 |
| W26411 | 76-30F | 12/72 | Label/in bulk | 8.5/9.2 | 31.5x27.5x19.5 |
| W26412 | 76-8F | 12/72 | Label/in bulk | 8.1/9.3 | 31.5x27.5x19.5 |
| W26413 | 78-15F | 12/72 | Label/in bulk | 9.3/10.5 | 31.5x27.5x19.5 |
| W26414 | 80-15F | 12/72 | Label/in bulk | 9.6/10.6 | 32.5x31x22 |
| W26415 | 80/82-15F | 12/72 | Label/in bulk | 9.3/10.5 | 32.5x31x22 |
| W26416 | 86-16F | 12/72 | Label/in bulk | 9.9/11.2 | 32.5x31x22 |
| W26417 | 86-18F | 12/72 | Label/in bulk | 9.8/11 | 32.5x31x22 |
| W26418 | 90-15F | 12/72 | Label/in bulk | 9.5/10.8 | 32.5x31x22 |
| W26419 | 92-10F | 12/72 | Label/in bulk | 9.6/10.8 | 32.5x31x22 |
| W26420 | 93-15F | 12/72 | Label/in bulk | 11.8/13.2 | 34x28x24 |
| W26421 | 93-36F | 12/72 | Label/in bulk | 11.6/13.1 | 34x28x24 |
| W26422 | 93-45F | 12/72 | Label/in bulk | 10.2/11.5 | 34x28x24 |
| W26423 | 95-15F | 12/72 | Label/in bulk | 10.7/11.5 | 34x28x24 |
| W26424 | 96-18F | 12/72 | Label/in bulk | 10.3/11.5 | 34x28x24 |
| W26425 | 100-15F | 12/72 | Label/in bulk | 11.3/12.5 | 38x32x26 |
| W26426 | 106-15F | 12/72 | Label/in bulk | 11.7/12.8 | 38x32x26 |
| W26427 | 108-15F | 12/72 | Label/in bulk | 12.1/13.3 | 38x32x26 |
| W26428 | 108-18F | 12/72 | Label/in bulk | 12.4/13.5 | 38x32x26 |
| W26429 | New76-12F | 12/72 | Label/in bulk | 7.8/9.9 | 34x28x24 |



■ Aluminium Cap Type Oil Filter Wrench

碗型机油滤清器扳手

Material: Aluminium Alloy

| ITEM NO | SIZE mm | Q'TY PCS | PACKING | G.W/N.W kg | MEAS cm |
|---------|----------|----------|--------------|-------------|--------------|
| W26301 | 64-14F | 12/72 | Sliding Card | 8.1/9.6 | 55x38x32.5 |
| W26302 | 74-14F | 12/72 | Sliding Card | 9.5/10.8 | 55x38x32.5 |
| W26303 | 76-14F | 12/72 | Sliding Card | 11/11.9 | 55x38x32.5 |
| W26304 | 86.5-16F | 12/72 | Sliding Card | 11.52/13.02 | 61.5x41.5x39 |

OIL FILTER WRENCH

OIL FILTER WRENCH



Standard Oil Filter Wrench
经济型机油滤清器扳手

Material: Carbon Steel

| ITEM NO | SIZE Inch / mm | Q'TY PCS | PACKING | G.W/N.W kg | MEAS cm |
|---------|-----------------------|-------------|--------------|---------------|--------------|
| WC2801 | 2-3/4"-3-1/4" 70-82.5 | 6/36 | Sliding Card | 8.9/7.4 | 45.5x30.5x36 |
| WC2802 | 3-7/16"-3-3/4" 87-95 | 6/36 | Sliding Card | 9.7/8.2 | 45.5x30.5x36 |



Stainless Steel Swivel Oil Filter Wrench
不锈钢可调式滤清器扳手

Material: Stainless steel

| ITEM NO | SIZE Inch / mm | Q'TY PCS | PACKING | G.W/N.W kg | MEAS cm |
|---------|-------------------------|-------------|--------------|---------------|------------|
| WC2901 | 2-3/8"-2-5/8" 60.3-66.7 | 6/36 | Sliding Card | 12.3/10.8 | 51x30.5x39 |



Swivel Oil Filter Wrench
可调式机油滤清器扳手

Material: Carbon Steel

| ITEM NO | SIZE Inch / mm | Q'TY PCS | PACKING | G.W/N.W kg | MEAS cm |
|---------|-----------------------|-------------|--------------|---------------|--------------|
| WC2803 | 2-3/4"-3-1/4" 70-82.5 | 6/36 | Sliding Card | 11.8/10.3 | 45.5x30.5x36 |
| WC2804 | 3-7/16"-3-3/4" 87-95 | 6/36 | Sliding Card | 12.3/10.8 | 45.5x30.5x36 |



Swivel Oil Filter Wrench
可调式机油滤清器扳手

Material: Stainless steel

| ITEM NO | SIZE Inch / mm | Q'TY PCS | PACKING | G.W/N.W kg | MEAS cm |
|---------|-------------------------|-------------|--------------|---------------|------------|
| WC2902 | 2-3/8"-2-5/8" 60.3-66.7 | 6/36 | Sliding Card | 11/12.5 | 51x30.5x39 |
| WC2903 | 2-3/4"-3-1/4" 70-82.5 | 6/36 | Sliding Card | 11.8/13.3 | 51x30.5x39 |
| WC2904 | 3-7/16"-3-3/4" 87-95 | 6/36 | Sliding Card | 12.5/13.8 | 51x30.5x39 |



Swivel Oil Filter Wrench
可调式机油滤清器扳手

Material: Carbon Steel

| ITEM NO | SIZE Inch / mm | Q'TY PCS | PACKING | G.W/N.W kg | MEAS cm |
|---------|----------------------|-------------|--------------|---------------|------------|
| WC2805 | 2-3/8"-2-7/8" 60-73 | 6/36 | Sliding Card | 11.8/10.3 | 50x30x40 |
| WC2806 | 2-7/8"-3-3/8" 73-85 | 6/36 | Sliding Card | 12.3/10.8 | 50x30x40 |
| WC2807 | 3-3/8"-3-3/4" 85-95 | 6/36 | Sliding Card | 13.4/11.9 | 50x30x40 |
| WC2808 | 3-3/4"-4-3/8" 95-110 | 6/36 | Sliding Card | 13.9/12.4 | 50x30x40 |



Swivel Oil Filter Wrench
可调式机油滤清器扳手

Material: Stainless Steel

| ITEM NO | SIZE Inch / mm | Q'TY PCS | PACKING | G.W/N.W kg | MEAS cm |
|---------|-------------------------|-------------|-------------------------|---------------|------------|
| WC2905 | 2-3/8"-2-5/8" 60.3-66.7 | 6/36 | 1/2 Double Sliding Card | 11.5/13 | 50x30.5x45 |
| WC2906 | 2-3/4"-3-1/4" 70-82.5 | 6/36 | 1/2 Double Sliding Card | 12.4/13.9 | 50x30.5x45 |
| WC2907 | 3-7/16"-3-3/4" 87-95 | 6/36 | 1/2 Double Sliding Card | 13.2/14.7 | 50x30.5x45 |



Swivel Oil Filter wrench
可调式滤清器扳手

Material: Stainless steel

| ITEM NO | SIZE Inch / mm | Q'TY PCS | PACKING | G.W/N.W kg | MEAS cm |
|---------|---------------------|-------------|--------------|---------------|------------|
| WC2809 | 2-1/4"-2-3/4" 57-70 | 6/36 | Sliding Card | 8.6/7.4 | 51x30.5x39 |



Swivel Oil Filter Wrench
可调式机油滤清器扳手

Material: Stainless steel
Handle: Double-injection molding

| ITEM NO | SIZE Inch / mm | Q'TY PCS | PACKING | G.W/N.W kg | MEAS cm |
|---------|-----------------------|-------------|-------------------------|---------------|------------|
| WC2908 | 4-1/8"-4-1/2" 104-113 | 6/36 | 1/2 Double Sliding Card | 15.2/13.7 | 56x34x43 |



Swivel Oil Filter Wrench
可调式机油滤清器扳手

Material: Stainless steel

| ITEM NO | SIZE Inch / mm | Q'TY PCS | PACKING | G.W/N.W kg | MEAS cm |
|---------|-------------------------|-------------|--------------|---------------|------------|
| WC2909 | 2-3/4"-3-1/4" 70-82.5 | 6/24 | Sliding Card | 7/8.5 | 31x29x37.5 |
| WC2910 | 3-3/4"-3-7/8" 88.9-98.5 | 6/24 | Sliding Card | 8.9/10.3 | 39.5x32x39 |



Half Chain-type Oil Filter Wrench
半链条机油滤清器扳手

Material: Stainless steel

| ITEM NO | SIZE Inch / mm | Q'TY PCS | PACKING | G.W/N.W kg | MEAS cm |
|---------|--------------------------|-------------|---------|---------------|------------|
| WS3004 | 2-3/4"-4-1/2" 69.9-114.3 | 6/36 | | 9.9/11.2 | 48x30x37.5 |



Stainless Steel Oil Filter Wrench
不锈钢机油滤清器扳手

Material: Stainless steel

| ITEM NO | SIZE Inch / mm | Q'TY PCS | PACKING | G.W/N.W kg | MEAS cm |
|---------|------------------------|-------------|--------------|---------------|------------|
| WC2911 | 3-3/4"-4-3/8" 95.3-110 | 6/36 | Sliding Card | 16.3/17.8 | 54x43x34 |
| WC2912 | 4-1/8"-4-1/2" 104-113 | 6/36 | Sliding Card | 17.1/18.6 | 54x43x34 |
| WC2913 | 5-1/4"-5-3/4" 133-146 | 6/36 | Sliding Card | 17.8/18.9 | 54x43x34 |



Chain Filter Wrench
链条滤清器扳手

| ITEM NO | SIZE Inch / mm | Q'TY PCS | PACKING | G.W/N.W kg | MEAS cm |
|---------|-------------------|-------------|---------|---------------|------------|
| WS3005 | 6" 152.4 | 40 | In bulk | 18.2/19.7 | 40x24x17 |
| WS3006 | 9" 228.6 | 40 | In bulk | 20.2/21.7 | 40x24x17 |
| WS3007 | 12" 304.8 | 40 | In bulk | 26.5/28 | 40x24x17 |



Swivel Oil Filter Wrench
可调式滤清器扳手

Material: Carbon Steel

| ITEM NO | SIZE Inch / mm | Q'TY PCS | PACKING | G.W/N.W kg | MEAS cm |
|---------|-------------------------|-------------|--------------|---------------|------------|
| WS3001 | 3" - 3-3/4" 76.2-95.3 | 6/36 | Sliding Card | 9.2/10.5 | 54x43x34 |
| WS3002 | 4" - 4-3/8" 101.6-111.1 | 6/36 | Sliding Card | 9.4/11.6 | 54x43x34 |



Strap Filter Wrench
皮带式滤清器扳手

| ITEM NO | SIZE Inch / mm | Q'TY PCS | PACKING | G.W/N.W kg | MEAS cm |
|---------|-------------------|-------------|---------|---------------|------------|
| WS3008 | 9" 228.6 | 50 | In bulk | 17/18 | 47x25x18 |
| WS3009 | 12" 304.8 | 50 | In bulk | 18/19 | 47x25x18 |



Half Chain-type Oil Filter Wrench
半链条机油滤清器扳手

Material: Stainless steel

| ITEM NO | SIZE Inch / mm | Q'TY PCS | PACKING | G.W/N.W kg | MEAS cm |
|---------|------------------------|-------------|----------------|---------------|------------|
| WS3003 | 2-1/2"-4-1/2" 63.5-114 | 6/36 | DOUBLE BLISTER | 11.5/13 | 48x30x37.5 |



Oil Filter Pliers
钳式机油滤清器扳手

Material: Carbon Steel

| ITEM NO | SIZE Inch / mm | Q'TY PCS | PACKING | G.W/N.W kg | MEAS cm |
|---------|------------------------|-------------|--------------|---------------|----------------|
| WP4001 | 2-1/2"-4-5/8" 63.5-116 | 6/36 | Sliding Card | 10/9 | 58.5x37.5x12.5 |



Round Adjustable Oil Filter Wrench
圓形可調式機油濾清器扳手

Material: Carbon Steel

| ITEM NO | SIZE Inch / mm | Q'TY PCS | PACKING | G.W/N.W kg | MEAS cm |
|---------|-------------------------|-------------|----------------|---------------|------------|
| WR4002 | 2-1/2"-3-1/8" 63.5-79.4 | 12/48 | Double Blister | 16.6/18.1 | 66x23.5x37 |



Band Oil Filter Wrench
帶式機油濾清器扳手

Material: Seamless Square Tube+Nylon Belt

| ITEM NO | SIZE Inch / mm | Q'TY PCS | PACKING | G.W/N.W kg | MEAS cm |
|---------|-------------------|-------------|--------------|---------------|------------|
| WB4003 | 0"-6" 0-152 | 6/36 | Sliding Card | 7/8.2 | 49x23.5x24 |



Round Adjustable Oil Filter Wrench
圓形可調式機油濾清器扳手

Material: Carbon Steel

| ITEM NO | SIZE Inch / mm | Q'TY PCS | PACKING | G.W/N.W kg | MEAS cm |
|---------|--------------------------|-------------|--------------|---------------|------------|
| WQ4005 | 2-3/5"-3-1/5" 66-81 | 6/36 | Sliding Card | Sliding Card | 36.5x30x35 |
| WQ4006 | 2-3/4"-3-3/4" 69.9-95.3 | 6/36 | Sliding Card | Sliding Card | 36.5x30x35 |
| WQ4007 | 3-3/4"-4-1/2" 95.3-114.5 | 6/36 | Sliding Card | Sliding Card | 36.5x30x35 |



3-leg Oil Filter Wrench
三爪可調式濾清器扳手

Material: Carbon Steel

| ITEM NO | SIZE Inch / mm | Q'TY PCS | PACKING | G.W/N.W kg | MEAS cm |
|---------|-------------------------|-------------|--------------|---------------|------------|
| WJ2901 | 2-1/2"-3-7/8" 63.5-98.4 | 12/48 | Sliding Card | 11.9/10.4 | 55x23.5x36 |



3-leg Oil Filter Wrench
三爪可調式濾清器扳手

Material: Carbon Steel

| ITEM NO | SIZE Inch / mm | Q'TY PCS | PACKING | G.W/N.W kg | MEAS cm |
|---------|-------------------------|-------------|----------------|---------------|--------------|
| WJ2902 | 2-1/2"-3-7/8" 63.5-98.5 | 6/36 | Double Blister | 7.92/9.9 | 42.5x36x24.8 |



3-leg Two Way Oil Filter Wrench
三爪双向可調濾清器扳手

Material: Carbon Steel

| ITEM NO | SIZE Inch / mm | Q'TY PCS | PACKING | G.W/N.W kg | MEAS cm |
|---------|------------------------|-------------|--------------|---------------|------------|
| WJ2903 | 2-1/2"-4-1/8" 63.5-110 | 6/36 | Sliding Card | 13/14.2 | 47.5x40x39 |



3-leg Two Way Oil Filter Wrench
三爪双向可調濾清器扳手

Material: Carbon Steel

| ITEM NO | SIZE Inch / mm | Q'TY PCS | PACKING | G.W/N.W kg | MEAS cm |
|---------|------------------------|-------------|----------------|---------------|------------|
| WJ2904 | 2-1/2"-4-1/8" 63.5-110 | 6/36 | Double Blister | 13.2/14.5 | 47.5x40x39 |



3-leg Two Way Oil Filter Wrench
扁三爪兩用可調濾清器扳手

Material: Carbon Steel

| ITEM NO | SIZE Inch / mm | Q'TY PCS | PACKING | G.W/N.W kg | MEAS cm |
|---------|------------------------|-------------|-----------|---------------|------------|
| WJ2905 | 2-1/2"-4-1/8" 63.5-110 | 10/40 | Color Box | 14/15.2 | 45.5x40x30 |



3-leg Two Way Oil Filter Wrench
圓三爪兩用可調濾清器扳手

Material: Carbon Steel

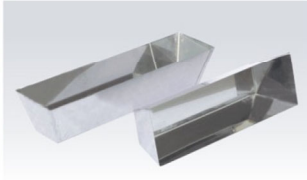
| ITEM NO | SIZE Inch / mm | Q'TY PCS | PACKING | G.W/N.W kg | MEAS cm |
|---------|------------------------|-------------|-----------|---------------|------------|
| WJ2906 | 2-1/2"-4-1/8" 63.5-110 | 40 | Color Box | 25/26.2 | 45x36x19.5 |



3-leg Two Way Oil Filter Wrench
圓彎三爪兩用可調濾清器扳手

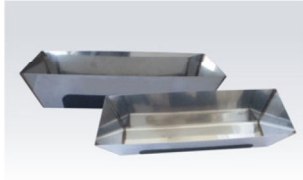
Material: Carbon Steel

| ITEM NO | SIZE Inch / mm | Q'TY PCS | PACKING | G.W/N.W kg | MEAS cm |
|---------|-----------------------|-------------|-----------|---------------|--------------|
| WJ2907 | 1-4/5"-2-19/30" 45-75 | 40 | Color Box | 24/25.8 | 48.5x39x19.5 |



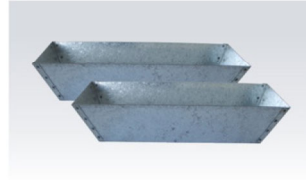
Stainless Steel Mun Pan
不锈钢油灰槽

| ITEM NO | M201 | M202 |
|-------------------|-----------|-----------|
| SIZE Inch / mm | 12" 305 | 14" 356 |
| Q'TY PCS | 12/48 | 12/48 |
| PACKING | PP | PP |
| G.W/N.W kg | 28.3/29.5 | 31.2/32.5 |
| MEAS cm | 39x26x30 | 39x26x30 |



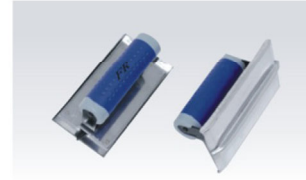
Stainless Steel Mun Pan (lab mat)
不锈钢油灰槽带防滑垫

| ITEM NO | M203 | M204 |
|-------------------|-----------|-----------|
| SIZE Inch / mm | 12" 305 | 14" 356 |
| Q'TY PCS | 12/48 | 12/48 |
| PACKING | PP | PP |
| G.W/N.W kg | 25.6/27.2 | 26.9/28.2 |
| MEAS cm | 39x26x30 | 39x26x30 |



Galvanized Steel Mun Pan
镀锌板油灰槽

| ITEM NO | M205 | M206 |
|-------------------|----------|-----------|
| SIZE Inch / mm | 12" 305 | 14" 356 |
| Q'TY PCS | 12/48 | 12/48 |
| PACKING | PP | PP |
| G.W/N.W kg | 26/27.3 | 26.9/28.2 |
| MEAS cm | 39x26x30 | 39x26x30 |



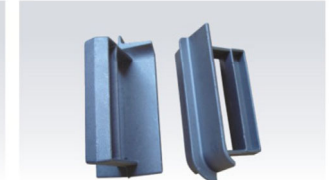
Stainless Steel Groover
不锈钢开槽刀

| ITEM NO | M303 |
|-------------------|-----------|
| SIZE Inch / mm | 6" 154 |
| Q'TY PCS | 12/48 |
| PACKING | PP |
| G.W/N.W kg | 15.8/17.2 |
| MEAS cm | 40x27x25 |



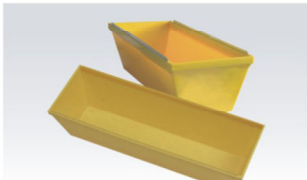
Aluminum Alloy Edger
铝合金圆角器

| ITEM NO | M304 |
|-------------------|----------|
| SIZE Inch / mm | 6" 154 |
| Q'TY PCS | 12/48 |
| PACKING | PP |
| G.W/N.W kg | 6.5/7.8 |
| MEAS cm | 40x27x25 |



Aluminum Alloy Groover
铝合金开槽刀

| ITEM NO | M305 |
|-------------------|----------|
| SIZE Inch / mm | 6" 154 |
| Q'TY PCS | 12/48 |
| PACKING | PP |
| G.W/N.W kg | 8.4/9.6 |
| MEAS cm | 40x27x25 |



Plastic Mun Pan
塑料油灰槽

Material: ABS

| ITEM NO | M207 | M208 |
|-------------------|----------|-----------|
| SIZE Inch / mm | 12" 305 | 14" 356 |
| Q'TY PCS | 12/48 | 12/48 |
| PACKING | PP | PP |
| G.W/N.W kg | 9.1/10.5 | 10.1/11.5 |
| MEAS cm | 39x26x30 | 39x26x30 |



Drywall Rasp
不锈钢锉刨

| ITEM NO | M301 |
|-------------------|----------|
| SIZE Inch / mm | 6" 154 |
| Q'TY PCS | 12/48 |
| PACKING | PP |
| G.W/N.W kg | 9.1/10.3 |
| MEAS cm | 39x26x30 |



Stainless Steel Edger
不锈钢圆角器

| ITEM NO | M302 |
|-------------------|-----------|
| SIZE Inch / mm | 6" 156 |
| Q'TY PCS | 12/48 |
| PACKING | PP |
| G.W/N.W kg | 14.5/16.8 |
| MEAS cm | 40x27x25 |



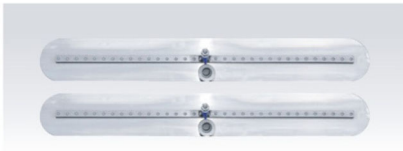
Surform Blade
锉片

| ITEM NO | M401 | M402 | M403 | M404 |
|--------------------|---------------|----------------------|-------------------------|------------------------|
| SIZE Inch mm | 10" 250x16 | 10"x1-5/8" 250x40 | 5-1/2"x1-5/8" 140x40 | 2-1/2"x1-5/8" 60x40 |
| Q'TY PCS | 6/120 | 6/120 | 6/120 | 6/120 |
| PACKING | PP | PP | PP | PP |
| G.W/N.W kg | 6/7.5 | 5.1/6.2 | 3.5/4.2 | 2.8/3.2 |
| MEAS cm | 42x32x24 | 42x32x24 | 42x32x24 | 42x32x24 |



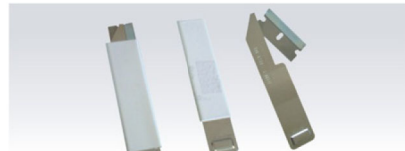
Nail Puller
小撬棒/起钉器

| ITEM NO | M501 | M502 | M503 | M504 |
|--------------------|---------|---------|---------|---------|
| SIZE Inch mm | 4.5" | 5.5" | 7" | 7" |
| Q'TY PCS | 10/200 | 10/200 | 10/200 | 10/200 |
| PACKING | PP | PP | PP | PP |
| G.W/N.W kg | 23/24.5 | 14/15.5 | 6.6/7.8 | 4.6/5.8 |
| MEAS cm | / | / | / | / |



Plaster Trowel
抹泥刀

| ITEM NO | SIZE Inch / mm | Q'TY PCS | PACKING | G.W/N.W kg | MEAS cm |
|---------|-------------------|-------------|---------|---------------|------------|
| M601 | 36" 914 | 3 | PP | 6.3/6.6 | 93x29x8 |



Carton Cutter
纸箱割刀

| ITEM NO | SIZE cm | Q'TY PCS | PACKING | G.W/N.W kg | MEAS cm |
|---------|------------|-------------|---------|---------------|------------|
| M602 | 10X2.2 | / | PP | 16.5/18.5 | / |



Putty knife
油灰刀

ITEM NO: M603
Size: 1.5" 2" 2.5" 3" 4" 4.5" 5" 5.5" 6"



Galvanized Clamp

马夹
ITEM NO.: M700