

TEMCO

— Automotive Parts —



Rear Wiper Blades

*March forward courageously,
with the Rear Clear!*

www.0086parts.com

100%
Universal

NF-028

Multifunction
Flat Wiper Blade



Flat Wiper Blades (Universal)

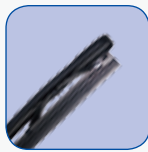


NF-040



- ☺ TOP Quality in the world!
- ☺ Only for Top Brands!
- ☺ Newest Design in 2012!

Application: *100% Universal*
 Arm Type: *All type Arms*
 Rubber: *Teflon*
 Spring: *Stainless Steel*
 Size: *11"~28"*



Spring Claws
 Innovative Spring Claws Structure, Self-Adjusting the radian of the Main Spring, ensure the pressure evenly.



10 Adaptors
 With 10 Adaptors, can fit almost 100% cars, cover all the wiper arms in the world.



Single Main Spring
 Single Main Spring, 14mm width, using the raw material imported from Japan; Free of Patent.



Aerodynamical Spoiler Cover
 Intergrated Whole Spoiler Cover, designed accordingly to new Aerodynamical technology. Working well in High Speed.

Inch	11"	12"	13"	14"	15"	16"	17"	18"	19"	20"	21"	22"	23"	24"	25"	26"	27"	28"
mm	275	300	325	350	375	400	425	450	475	500	525	550	575	600	625	650	675	700

NF-028



- ☺ 100% universal for all kind of passenger cars
- ☺ Teflon rubber for top quality
- ☺ Easy to replace the adapters
- ☺ New innovation item

NEW!

**100%
Fit**

Full range of Adapter

Totally 10 adapters to fit different wiper arms. Cover the full range of the passenger cars in the world.

Easy-Install

Just detach previous adapter, and press the new one on the adapter base.

Application: *100%
Universal*

Arm Type: *All type Arms*

Rubber: *Teflon*

Spring: *Stainless Steel*

Size: *11"~28"*

Inch	11"	12"	13"	14"	15"	16"	17"	18"	19"	20"	21"	22"	23"	24"	25"	26"	27"	28"
mm	275	300	325	350	375	400	425	450	475	500	525	550	575	600	625	650	675	700

NF-018



- ⊙ 100% universal for all kind of passenger cars
- ⊙ Teflon rubber for top quality
- ⊙ Best choice for end sales
- ⊙ Most popular type in last 4 years



Application: *100% Universal*
 Arm Type: *All type Arms*
 Rubber: *Teflon*
 Spring: *Stainless Steel*
 Size: *11"~28"*

NF-039

- ⊙ Fit for E1, E2, E3, E4 Wiper Arm
- ⊙ OEM quality



Application: *For OE Arms*
 Arm Type: *E1, E2, E3, E4*
 Rubber: *Teflon*
 Spring: *Stainless Steel*
 Size: *11"~28"*

NF-037



- ⊙ Fit for Hook Wiper Arm
- ⊙ Top quality



Application: *Universal*
 Arm Type: *Hook*
 Rubber: *Teflon*
 Spring: *Stainless Steel*
 Size: *11"~28"*

NF-030



- ☉ With Sprayer and Water hose
- ☉ Fit for Samand and Peugeot 405



11"
12"
13"
14"
15"
16"
17"
18"
19"
20"
21"
22"
23"
24"
26"
28"

Application: *Universal*
 Arm Type: *Hook*
 Rubber: *Natural Rubber with Graphite*
 Spring: *Stainless Steel*
 Size: *11"~28"*

NF-011

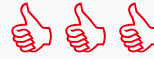
- ☉ Fit for Hook, Bayonet Wiper Arm
- ☉ Top quality



11"
12"
13"
14"
15"
16"
17"
18"
19"
20"
21"
22"
23"
24"
26"
28"

Application: *Universal*
 Arm Type: *Hook, Pin*
 Rubber: *Natural Rubber with Graphite*
 Spring: *Stainless Steel*
 Size: *11"~28"*

NF-003



- ☉ Fit for Hook, Bayonet Wiper Arm
- ☉ Top quality



11"
12"
13"
14"
15"
16"
17"
18"
19"
20"
21"
22"
23"
24"
26"
28"

Application: *Universal*
 Arm Type: *Hook, Pin*
 Rubber: *Natural Rubber with Graphite*
 Spring: *Stainless Steel*
 Size: *11"~28"*

NF-002



- ☉ Fit for Hook, Bayonet Wiper Arm
- ☉ Top quality



11"
12"
13"
14"
15"
16"
17"
18"
19"
20"
21"
22"
23"
24"
26"
28"

Application: *Universal*
 Arm Type: *Hook, Pin*
 Rubber: *Natural Rubber with Graphite*
 Spring: *Stainless Steel*
 Size: *11"~28"*

Flat Wiper Blades (OEM)



NF-022



- ⊙ OEM type for Toyota
- ⊙ Hybrid type for Flat wiper & Conventional metal frame wiper
- ⊙ Aerodynamic design
- ⊙ Universal for Hook type wiper arm

Hybrid Design
Hybrid type for Flat wiper and Conventional metal frame wiper, have the advantage from both type

Hook Adapter
Universal for most of the cars with hook type wiper arm

Aerodynamic Frame
Aerodynamic design, better performance in high speed driving, more clean, less noise

Wider Rubber
The rubber is much Wider than normal type, better performance

Application: *Honda Accord, Universal*
 Arm Type: *Hook*
 Rubber: *Teflon*
 Spring: *Stainless Steel*
 Size: *11"~28"*

Inch	11"	12"	13"	14"	15"	16"	17"	18"	19"	20"	21"	22"	23"	24"	26"	28"
mm	275	300	325	350	375	400	425	450	475	500	525	550	575	600	650	700
Claw	4	4	4	4	4	4	6	6	6	8	8	8	8	8	8	8

NF-033

- ⊗ OEM type for Honda Civic
- ⊗ OEM quality



11"
12"
13"
14"
15"
16"
17"
18"
19"
20"
21"
22"
23"
24"
26"
28"

Application: *Honda Civic*

Arm Type: *Hook*

Rubber: *Teflon*

Spring: *Stainless Steel*

Size: *11"~28"*

NF-029

- ⊗ OEM type for Porsche
- ⊗ OEM quality



11"
12"
13"
14"
15"
16"
17"
18"
19"
20"
21"
22"
23"
24"
26"
28"

Application: *Porsche*

Arm Type: *OEM*

Rubber: *Teflon*

Spring: *Stainless Steel*

Size: *11"~28"*

NF-019

- ⊗ OEM type for VW Sagitar
- ⊗ OEM quality



11"
12"
13"
14"
15"
16"
17"
18"
19"
20"
21"
22"
23"
24"
26"
28"

Application: *VW Sagitar*

Arm Type: *OEM*

Rubber: *Teflon*

Spring: *Stainless Steel*

Size: *11"~28"*

NF-017

- ⊗ OEM type for VW Golf
- ⊗ OEM quality



11"
12"
13"
14"
15"
16"
17"
18"
19"
20"
21"
22"
23"
24"
26"
28"

Application: *VW Golf*

Arm Type: *OEM*

Rubber: *Teflon*

Spring: *Stainless Steel*

Size: *11"~28"*

NF-014

- ⊗ OEM type for Mercedes-Benz
- ⊗ OEM quality



11"
12"
13"
14"
15"
16"
17"
18"
19"
20"
21"
22"
23"
24"
26"
28"

Application: *Mercedes-Benz*
Arm Type: *OEM*
Rubber: *Teflon*
Spring: *Stainless Steel*
Size: *11"~28"*

NF-013

- ⊗ OEM type for BMW 3 Series
- ⊗ OEM quality



11"
12"
13"
14"
15"
16"
17"
18"
19"
20"
21"
22"
23"
24"
26"
28"

Application: *BMW 3 Series*
Arm Type: *OEM*
Rubber: *Teflon*
Spring: *Stainless Steel*
Size: *11"~28"*

NF-012

- ⊗ OEM type for Audi A6L
- ⊗ OEM quality



11"
12"
13"
14"
15"
16"
17"
18"
19"
20"
21"
22"
23"
24"
26"
28"

Application: *Audi A6L*
Arm Type: *OEM*
Rubber: *Teflon*
Spring: *Stainless Steel*
Size: *11"~28"*

NF-009

- ⊗ OEM type for Benz 220
- ⊗ OEM quality



11"
12"
13"
14"
15"
16"
17"
18"
19"
20"
21"
22"
23"
24"
26"
28"

Application: *Benz 220*
Arm Type: *OEM*
Rubber: *Teflon*
Spring: *Stainless Steel*
Size: *11"~28"*

NF-007

- ☺ OEM type for Audi A6 2003
- ☺ OEM quality



11"
12"
13"
14"
15"
16"
17"
18"
19"
20"
21"
22"
23"
24"
26"
28"

Application: *Audi A6 2003*
Arm Type: *OEM*
Rubber: *Teflon*
Spring: *Stainless Steel*
Size: *11"~28"*

NF-006

- ☺ OEM type for Volvo
- ☺ OEM quality



11"
12"
13"
14"
15"
16"
17"
18"
19"
20"
21"
22"
23"
24"
26"
28"

Application: *Volvo*
Arm Type: *OEM*
Rubber: *Teflon*
Spring: *Stainless Steel*
Size: *11"~28"*

NF-005

- ☺ OEM type for BMW 5 Series
- ☺ OEM quality



11"
12"
13"
14"
15"
16"
17"
18"
19"
20"
21"
22"
23"
24"
26"
28"

Application: *BMW 5 Series*
Arm Type: *OEM*
Rubber: *Teflon*
Spring: *Stainless Steel*
Size: *11"~28"*

NF-001

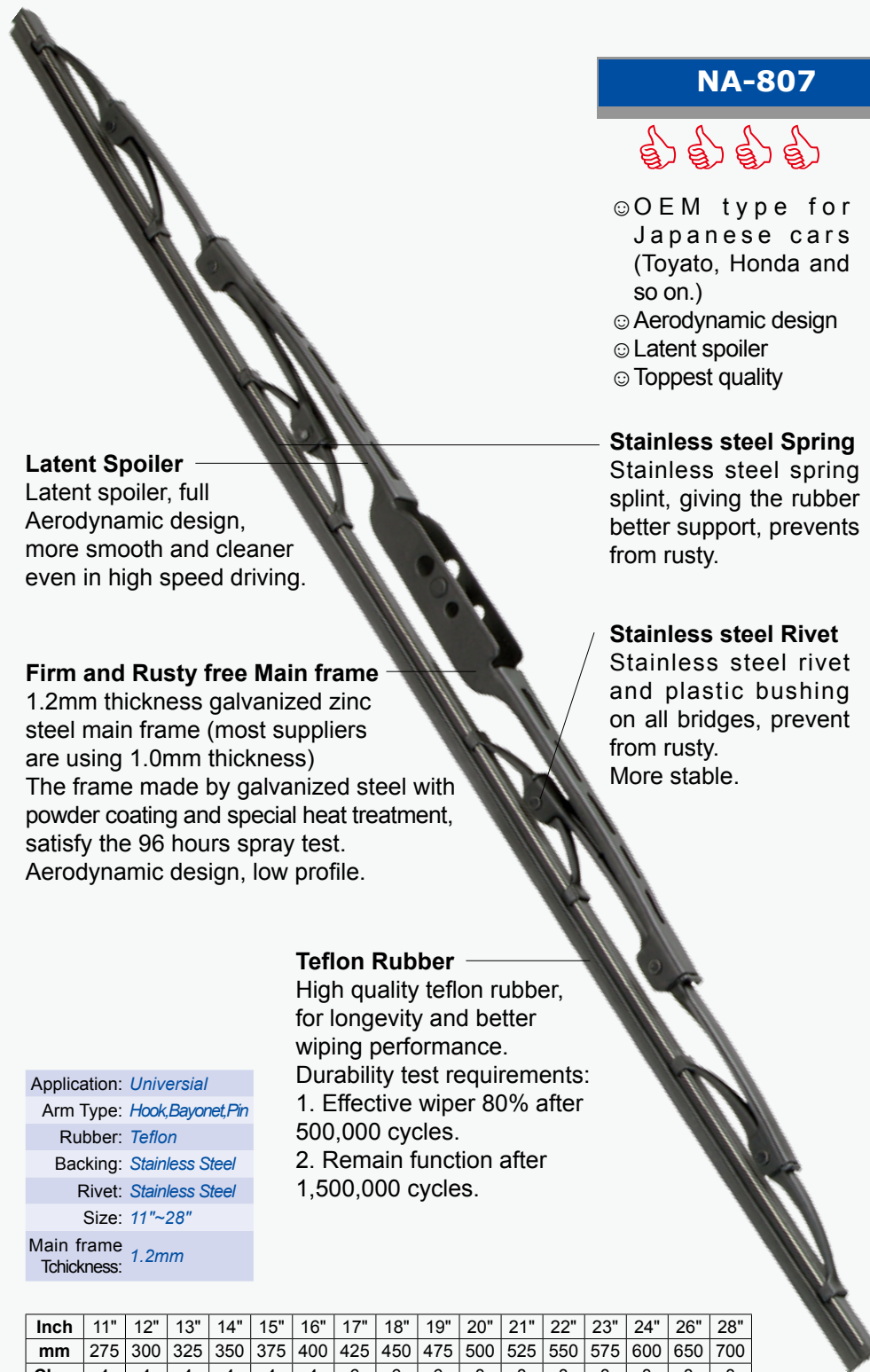
- ☺ OEM type for Ford Focus
- ☺ OEM quality



11"
12"
13"
14"
15"
16"
17"
18"
19"
20"
21"
22"
23"
24"
26"
28"

Application: *Ford Focus*
Arm Type: *OEM*
Rubber: *Teflon*
Spring: *Stainless Steel*
Size: *11"~28"*

A+++ Conventional Wiper Blades



NA-807



- ☺ OEM type for Japanese cars (Toyato, Honda and so on.)
- ☺ Aerodynamic design
- ☺ Latent spoiler
- ☺ Toppest quality

Latent Spoiler
 Latent spoiler, full Aerodynamic design, more smooth and cleaner even in high speed driving.

Stainless steel Spring
 Stainless steel spring splint, giving the rubber better support, prevents from rusty.

Firm and Rusty free Main frame
 1.2mm thickness galvanized zinc steel main frame (most suppliers are using 1.0mm thickness)
 The frame made by galvanized steel with powder coating and special heat treatment, satisfy the 96 hours spray test.
 Aerodynamic design, low profile.

Stainless steel Rivet
 Stainless steel rivet and plastic bushing on all bridges, prevent from rusty.
 More stable.

Teflon Rubber
 High quality teflon rubber, for longevity and better wiping performance.
 Durability test requirements:
 1. Effective wiper 80% after 500,000 cycles.
 2. Remain function after 1,500,000 cycles.

Application:	Universal
Arm Type:	Hook,Bayonet,Pin
Rubber:	Teflon
Backing:	Stainless Steel
Rivet:	Stainless Steel
Size:	11"~28"
Main frame Thickness:	1.2mm

Inch	11"	12"	13"	14"	15"	16"	17"	18"	19"	20"	21"	22"	23"	24"	26"	28"
mm	275	300	325	350	375	400	425	450	475	500	525	550	575	600	650	700
Claw	4	4	4	4	4	4	6	6	6	8	8	8	8	8	8	8

NA-806

- ⊙ OEM type for Japanese cars
- ⊙ Aerodynamic design
- ⊙ Latent spoiler
- ⊙ Toppest quality



11"
12"
13"
14"
15"
16"
17"
18"
19"
20"
21"
22"
23"
24"
26"
28"

Application: *Universal*
 Arm Type: *Hook, Bayonet*
 Rubber: *Teflon*
 Backing: *Stainless Steel*
 Rivet: *Stainless Steel*
 Size: *11"~28"*
 Main frame Thickness: *1.2mm*

NA-805



- ⊙ Special frame design
- ⊙ OEM quality
- ⊙ All metal frame
- ⊙ Popular in Europe



11"
12"
13"
14"
15"
16"
17"
18"
19"
20"
21"
22"
23"
24"
26"
28"

Application: *Universal*
 Arm Type: *Hook, Bayonet, Pin*
 Rubber: *Teflon*
 Backing: *Stainless Steel*
 Rivet: *Stainless Steel*
 Size: *11"~28"*
 Main frame Thickness: *1.2mm*

NA-804

- ⊙ Special frame design
- ⊙ OEM quality
- ⊙ All metal frame
- ⊙ Popular in Europe



11"
12"
13"
14"
15"
16"
17"
18"
19"
20"
21"
22"
23"
24"
26"
28"

Application: *Universal*
 Arm Type: *Hook, Bayonet, Pin*
 Rubber: *Teflon*
 Backing: *Stainless Steel*
 Rivet: *Stainless Steel*
 Size: *11"~28"*
 Main frame Thickness: *1.2mm*

NA-801



- ⊙ New Bosch type
- ⊙ Best selling item for high quality market in Africa and South America



11"
12"
13"
14"
15"
16"
17"
18"
19"
20"
21"
22"
23"
24"
26"
28"

Application: *Universal*
 Arm Type: *Hook, Bayonet, Pin*
 Rubber: *Teflon*
 Backing: *Stainless Steel*
 Rivet: *Stainless Steel*
 Size: *11"~28"*
 Main frame Thickness: *1.2mm*

Conventional Wiper Blades



NU-107



- ☺ No.1 sales in worldwide!
- ☺ The most popular type conventional wiper blade
- ☺ Bosch 405 type

Natural Rubber with Graphite

Quite smooth in wiping performance, also protects the windows from scratch
Best choice rubber for aftermarket, good price.

Application:	<i>Universal</i>
Arm Type:	<i>Hook,Bayonet,Pin</i>
Rubber:	<i>Natural rubber with Graphite</i>
Backing:	<i>Stainless Steel</i>
Rivet:	<i>Stainless Steel</i>
Size:	<i>11"~28"</i>
Main frame Thickness:	<i>1.0mm</i>

Inch	11"	12"	13"	14"	15"	16"	17"	18"	19"	20"	21"	22"	23"	24"	26"	28"
mm	275	300	325	350	375	400	425	450	475	500	525	550	575	600	650	700
Claw	4	4	4	4	4	4	6	6	6	8	8	8	8	8	8	8

NU-106

- ⊙ OEM for Renault 9,11
- ⊙ All metal frame
- ⊙ Popular in Turkey market



11"
12"
13"
14"
15"
16"
17"
18"
19"
20"
21"
22"
23"
24"

Application: *Universal*
 Arm Type: *Hook, Bayonet, Pin*
 Rubber: *Natural rubber with Graphite*
 Backing: *Stainless Iron*
 Rivet: *Stainless Iron*
 Size: *11"~24"*
 Main frame Thickness: *1.0mm*

NU-105



- ⊙ No.1 economic type
- ⊙ All metal frame
- ⊙ Popular in Nigeria market



11"
12"
13"
14"
15"
16"
17"
18"
19"
20"
21"
22"
23"
24"

Application: *Universal*
 Arm Type: *Hook, Bayonet, Pin*
 Rubber: *Natural rubber with Graphite*
 Backing: *Iron*
 Rivet: *Iron*
 Size: *11"~24"*
 Main frame Thickness: *0.8mm*

NU-103

- ⊙ Whole Metal frame
- ⊙ PC backing rubber



11"
12"
13"
14"
15"
16"
17"
18"
19"
20"
21"
22"

Application: *Universal*
 Arm Type: *Hook, Bayonet, Pin*
 Rubber: *PC Backing*
 Backing: *Iron*
 Rivet: *Iron*
 Size: *11"~22"*
 Main frame Thickness: *0.7mm*

NU-102



- ⊙ Good price!
- ⊙ Metal main frame
- ⊙ Plastic legs
- ⊙ PC backing rubber



11"
12"
13"
14"
15"
16"
17"
18"
19"
20"

Application: *Universal*
 Arm Type: *Hook, Bayonet, Pin*
 Rubber: *PC Backing*
 Backing: *Iron*
 Rivet: *Iron*
 Size: *11"~20"*
 Main frame Thickness: *0.7mm*

OEM Wiper Blades



NO-610



- ☺ OEM type for Peugeot 405
- ☺ OEM quality
- ☺ With water sprayer and water hose
- ☺ Popular in Iran market

Application: *Peugeot 405*

Arm Type: *Hook*

Adapter:

Rubber: *Natural rubber with Graphite*

Backing: *Stainless Steel*

Rivet: *Stainless Steel*

Size: *22"*

Main frame Thickness: *1.0mm*

Inch	22"
mm	550
Claw	8

NO-608

- ⊙ OEM for Benz
- ⊙ Bosch 930 type



22"
24"
26"

Application: *Mercedes-Benz*

Arm Type: *Hook*

Adapter:

Rubber: *Natural rubber with Graphite*

Backing: *Stainless Steel*

Rivet: *Stainless Steel*

Size: *22", 24", 26"*

Main frame Thickness: *1.4mm*

NO-607



- ⊙ OEM for Samand
- ⊙ With Nozzle and Water hose
- ⊙ Popular in Iran market



18"
19"
20"
21"
22"
23"
24"

Application: *Samand*

Arm Type: *Hook*

Adapter:

Rubber: *Natural rubber with Graphite*

Backing: *Stainless Steel*

Rivet: *Stainless Steel*

Size: *18"~24"*

Main frame Thickness: *1.2mm*

NO-606



- ⊙ OEM for many car types of Volkswagen
- ⊙ Driver side with spoiler
- ⊙ Passenger side is curved



19"
21"
22"

Application: *Volkswagen*

Arm Type: *Hook*

Adapter:

Rubber: *Natural rubber with Graphite*

Backing: *Stainless Steel*

Rivet: *Stainless Steel*

Size: *19", 21", 22"*

Main frame Thickness: *1.2mm*

NO-605

- ⊙ OEM for Peugeot 206
- ⊙ Driver side with metal spoiler



16"
26"

Application: *Peugeot 206*

Arm Type: *Hook*

Adapter:

Rubber: *Natural rubber with Graphite*

Backing: *Stainless Steel*

Rivet: *Stainless Steel*

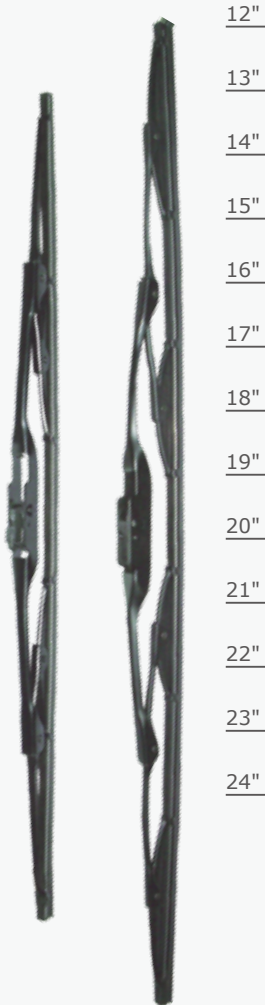
Size: *26"+16"*

Main frame Thickness: *1.2mm*



NO-604

- Ⓞ OEM for GM Buick, Ford, and others
- Ⓞ Special frame design
- Ⓞ Popular in USA market



Application: *GM Buick*
Arm Type: *Hook*
Adapter:
Rubber: *Natural rubber with Graphite*
Backing: *Stainless Steel*
Rivet: *Stainless Steel*
Size: *12"~24"*
Main frame Thickness: *1.2mm*

NO-603

- Ⓞ OEM for BMW 5 series, 7 series, 8 series, Renault Safrane, and others
- Ⓞ Special frame design



Application: *BMW 7 Series*
Arm Type: *Hook*
Adapter:
Rubber: *Natural rubber with Graphite*
Backing: *Stainless Steel*
Rivet: *Stainless Steel*
Size: *24"+26"*
Main frame Thickness: *1.2mm*

NO-602

- Ⓞ OEM for BMW 3 series, and others
- Ⓞ Special frame design



Application: *BMW E39*
Arm Type: *Hook*
Adapter:
Rubber: *Natural rubber with Graphite*
Backing: *Stainless Steel*
Rivet: *Stainless Steel*
Size: *22"+26"*
Main frame Thickness: *1.2mm*

NO-601

- Ⓞ OEM for BMW E39, and others
- Ⓞ Special frame design



Application: *BMW 3 Series*
Arm Type: *Hook*
Adapter:
Rubber: *Natural rubber with Graphite*
Backing: *Stainless Steel*
Rivet: *Stainless Steel*
Size: *26"+26"*
Main frame Thickness: *1.2mm*

Spoiler Wiper Blades

NB-504



- ⊗ OEM type for Japanese cars (Toyato, Honda and so on.)
- ⊗ Aerodynamic design
- ⊗ Latent spoiler
- ⊗ Toppest quality

Teflon Rubber

High quality teflon rubber, for longevity and better wiping performance.

Durability test requirements:

1. Effective wiper 80% after 500,000 cycles.
2. Remain function after 1,500,000 cycles.

UX plastic Spoiler

Secret technology UX plastic spolier, make the spoiler more stronger and more flexible, not easy to broken, high performance.



Application:	Universal
Arm Type:	Hook,Bayonet,Pin
Rubber:	Teflon
Backing:	Stainless Steel
Rivet:	Stainless Steel
Size:	11"~28"
Main frame Thickness:	1.2mm

Inch	11"	12"	13"	14"	15"	16"	17"	18"	19"	20"	21"	22"	23"	24"	26"	28"
mm	275	300	325	350	375	400	425	450	475	500	525	550	575	600	650	700
Claw	4	4	4	4	4	4	6	6	6	8	8	8	8	8	8	8

Snow Wiper Blades



NW-702



- ⊕ EPDM - Synthetic Rubber cover
- ⊕ Anti-Freeze frame structure
- ⊕ Extrem weather tested

EPDM-Synthetic Rubber Cover
Low temperature resistance

Silicon Rubber
High performance in cold temperature

Application: *Universal*
 Arm Type: *Hook, Bayonet*
 Rubber: *Silicon*
 Backing: *Stainless Steel*
 Rivet: *Stainless Steel*
 Size: *15"~24"*
 Main frame Thickness: *1.2mm*

Inch	15"	16"	17"	18"	19"	20"	21"	22"	23"	24"
mm	375	400	425	450	475	500	525	550	575	600
Claw	4	4	6	6	6	8	8	8	8	8

NW-703



- ⊙ Eliminates snow and ice build up
- ⊙ Framless designed, resists wind lift and rust
- ⊙ Installed within minutes
- ⊙ All length available



11"
12"
13"
14"
15"
16"
17"
18"
19"
20"
21"
22"
23"
24"
26"
28"

Application: *Universal*
 Arm Type: *Hook*
 Adapter: *H21*
 Rubber: *Natural rubber with Graphite*
 Spring: *Stainless Steel*
 Size: *11"~28"*

NW-701

- ⊙ EPDM - Synthetic Rubber cover
- ⊙ Anti-Freeze frame structure
- ⊙ Extrem weather tested



15"
16"
17"
18"
19"
20"
21"
22"
23"
24"

Application: *Universal*
 Arm Type: *Hook*
 Adapter:
 Rubber: *Natural rubber with Graphite*
 Backing: *Stainless Steel*
 Rivet: *Stainless Steel*
 Size: *15"~22"*
 Main frame Thickness: *1.2mm*

Crazy Tuner Wiper Blades

NC-304



- ☺ All metal frame
- ☺ Aerodynamic spoiler design
- ☺ All hot colors are available



Application: *Universal*
 Arm Type: *Hook, Bayonet, Pin*
 Rubber: *Natural rubber with graphite*
 Backing: *Stainless Steel*
 Rivet: *Stainless Steel*
 Size: *15"~24"*
 Main frame thickness: *1.0mm*

Inch	15"	16"	17"	18"	19"	20"	21"	22"	23"	24"
mm	375	400	425	450	475	500	525	550	575	600
Claw	4	4	6	6	6	8	8	8	8	8

NC-303

- ☉ Whole metal frame
- ☉ PC backing refill, twin rubber
- ☉ All hot colors are available



Application: *Universal*
Arm Type: *Hook, Pin*
Adapter:
Rubber: *Natural rubber with Graphite*
Backing: *Plastic*
Rivet: *Stainless Steel*
Size: *16", 18"*

NC-302

- ☉ Whole metal frame
- ☉ PC backing refill, twin rubber
- ☉ All hot colors are available



Application: *Universal*
Arm Type: *Hook, Pin*
Adapter:
Rubber: *Natural rubber with Graphite*
Backing: *Plastic*
Rivet: *Stainless Steel*
Size: *16", 18", 20"*

NC-301

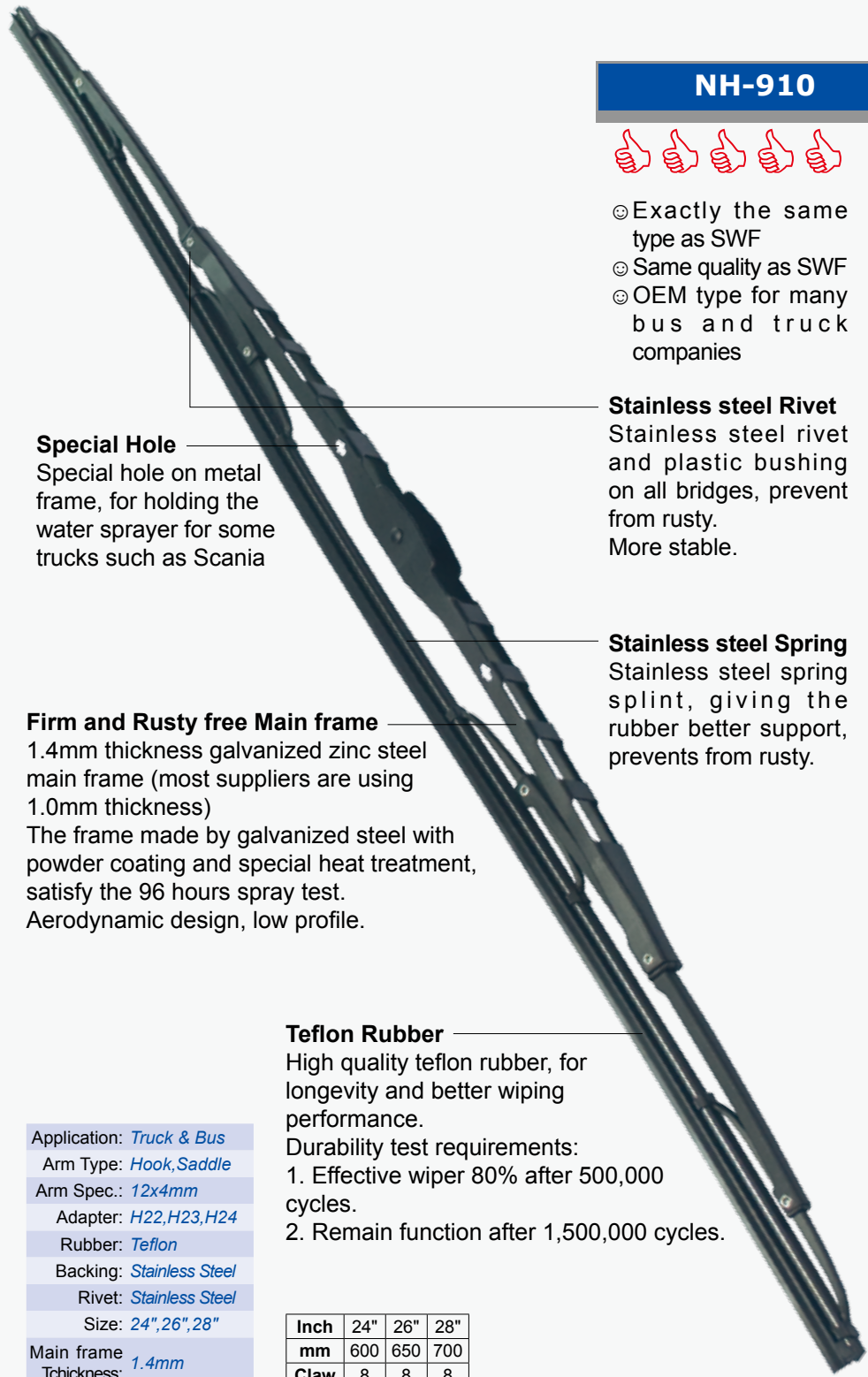


- ☉ Whole plastic frame
- ☉ PC backing refill, twin rubber
- ☉ All hot colors are available



Application: *Universal*
Arm Type: *Hook, Pin*
Adapter:
Rubber: *Natural rubber with Graphite*
Backing: *Plastic*
Rivet: *Stainless Steel*
Size: *16", 18", 20"*

Heavy Duty Wiper Blades



NH-910



- ☺ Exactly the same type as SWF
- ☺ Same quality as SWF
- ☺ OEM type for many bus and truck companies

Special Hole
Special hole on metal frame, for holding the water sprayer for some trucks such as Scania

Stainless steel Rivet
Stainless steel rivet and plastic bushing on all bridges, prevent from rusty.
More stable.

Firm and Rusty free Main frame
1.4mm thickness galvanized zinc steel main frame (most suppliers are using 1.0mm thickness)
The frame made by galvanized steel with powder coating and special heat treatment, satisfy the 96 hours spray test.
Aerodynamic design, low profile.

Stainless steel Spring
Stainless steel spring splint, giving the rubber better support, prevents from rusty.

Teflon Rubber
High quality teflon rubber, for longevity and better wiping performance.

- Durability test requirements:
1. Effective wiper 80% after 500,000 cycles.
 2. Remain function after 1,500,000 cycles.

Application:	Truck & Bus
Arm Type:	Hook, Saddle
Arm Spec.:	12x4mm
Adapter:	H22, H23, H24
Rubber:	Teflon
Backing:	Stainless Steel
Rivet:	Stainless Steel
Size:	24", 26", 28"

Main frame Thickness:	1.4mm
-----------------------	-------

Inch	24"	26"	28"
mm	600	650	700
Claw	8	8	8

NH-914



☉ Flat wiper blade



Application: *Truck & Bus*
 Arm Type: *Saddle*
 Arm Spec.:
 Adapter:
 Rubber: *Teflon*
 Backing: *Stainless Steel*
 Rivet: *Stainless Steel*
 Size: *26", 27", 28"*

NH-913



☉ Flat wiper blade



Application: *Truck & Bus*
 Arm Type: *Hook*
 Arm Spec.: *12x4, 9x4*
 Adapter:
 Rubber: *Teflon*
 Backing: *Stainless Steel*
 Rivet: *Stainless Steel*
 Size: *26", 27", 28"*

NH-912

☉ OEM type for minibus
 ☉ OEM quality
 ☉ Popular in Turkey



Application: *Truck & Bus*
 Arm Type: *Saddle*
 Arm Spec.:
 Adapter:
 Rubber: *Teflon*
 Backing: *Stainless Steel*
 Rivet: *Stainless Steel*
 Size: *26", 27", 28"*
 Main frame
 Thickness: *1.4mm*

NH-908

☉ OEM type for many
 bus and truck
 companies
 ☉ OEM quality



Application: *Truck & Bus*
 Arm Type: *Saddle*
 Arm Spec.: *17mm*
 Adapter: *S63, S66*
 Rubber: *Teflon*
 Backing: *Stainless Steel*
 Rivet: *Stainless Steel*
 Size: *24", 26", 28", 32"*
 Main frame
 Thickness: *1.4mm*

NH-907



- ⊙ OEM type for many bus and coach companies
- ⊙ OEM quality



32"

36"

40"

Application: *Bus & Coach*
 Arm Type: *Saddle*
 Arm Spec.: *21,23,25,27mm*
 Adapter: *S62,S64,S65*
 Rubber: *Teflon*
 Backing: *Stainless Steel*
 Rivet: *Stainless Steel*
 Size: *32",36",40"*
 Main frame Thickness: *1.4mm*

NH-905



- ⊙ OEM type for many bus and coach companies
- ⊙ OEM quality



36"

40"

Application: *Bus & Coach*
 Arm Type: *Reverted hook*
 Arm Spec.: *15mm*
 Adapter: *H16*
 Rubber: *Teflon*
 Backing: *Stainless Steel*
 Rivet: *Stainless Steel*
 Size: *36",40"*
 Main frame Thickness: *1.4mm*

NH-904



- ⊙ OEM shape
- ⊙ OEM quality
- ⊙ Wide adapter for 12x4mm hook type wiper arm



24"

26"

28"

Application: *Truck & Bus*
 Arm Type: *Hook*
 Arm Spec.: *12x4mm*
 Adapter: *H14*
 Rubber: *Teflon*
 Backing: *Stainless Steel*
 Rivet: *Stainless Steel*
 Size: *32",36",40"*
 Main frame Thickness: *1.2mm*

NH-903

- ⊙ OEM shape
- ⊙ OEM quality
- ⊙ Narrow adapter for 9x4mm, 9x3mm hook type wiper arm



24"

26"

28"

Application: *Truck & Bus*
 Arm Type: *Hook*
 Arm Spec.: *9x4mm,9x3mm*
 Adapter: *H20*
 Rubber: *Teflon*
 Backing: *Stainless Steel*
 Rivet: *Stainless Steel*
 Size: *32",36",40"*
 Main frame Thickness: *1.2mm*

Special Vehicle Wiper Blades

NH-962



- ⊗ OEM for train companies
- ⊗ OEM quality
- ⊗ Can fit most of the trains

Firm and Rusty free Main frame

1.4mm thickness galvanized zinc steel main frame

The frame made by galvanized steel with powder coating and special heat treatment, satisfy the 96 hours spray test.

Aerodynamic design, low profile.



Inch	18"	20"
mm	450	500
Leg	2	2

Application:	Universal
Arm Type:	Hook,Bayonet,Pin
Arm Spec.:	16mm
Rubber:	Natural
Backing:	Stainless Steel
Rivet:	Stainless Steel
Size:	18",20"

Main frame Thickness: 1.4mm

NH-961

- ⊙ OEM for train companies
- ⊙ OEM quality
- ⊙ Can fit most of the trains



18"

20"

Application: *Train*
Arm Type: *Saddle*
Arm Spec.: *8mm*
Adapter:
Rubber: *Natural*
Backing: *Stainless Steel*
Rivet: *Stainless Steel*
Size: *18",20"*
Main frame Thickness: *1.4mm*

NH-943



- ⊙ OEM for marine companies
- ⊙ OEM quality
- ⊙ Can fit most of the yatches



24"

28"

32"

36"

40"

Application: *Marine*
Arm Type: *Saddle*
Arm Spec.:
Adapter:
Rubber: *Natural*
Backing: *Stainless Steel*
Rivet: *Stainless Steel*
Size: *24"~40"*
Main frame Thickness: *1.2mm*

NH-942

- ⊙ OEM for marine companies
- ⊙ OEM quality
- ⊙ Can fit most of the yatches



24"

26"

28"

Application: *Marine*
Arm Type: *Hook*
Arm Spec.:
Adapter:
Rubber: *Natural*
Backing: *Stainless Steel*
Rivet: *Stainless Steel*
Size: *24",26",28"*
Main frame Thickness: *1.2mm*

NH-941

- ⊙ OEM for marine companies
- ⊙ OEM quality
- ⊙ Can fit most of the yatches



14"

16"

18"

20"

22"

24"

26"

Application: *Marine*
Arm Type: *Hook*
Arm Spec.:
Adapter:
Rubber: *Natural*
Backing: *Stainless Steel*
Rivet: *Stainless Steel*
Size: *14"~26"*
Main frame Thickness: *1.2mm*

Rear Wiper Blades

NR-410



- Ⓢ OEM type, special for Fiat Tempra rear
- Ⓢ OEM quality
- Ⓢ Metal arm, with wiper blade



Application: *Fiat Tempra*

Position: *Rear*

Rubber: *Natural rubber with Graphite*

Backing: *Stainless Steel*

Rivet: *Stainless Steel*

Blade Size: *20"*

Main frame Thickness: *1.2mm*

Inch	20"
mm	500

NR-409

- Ⓞ OEM type, special for Fiat Palio rear
- Ⓞ OEM quality
- Ⓞ Plastic arm, with wiper blade

14"



Application: *Fiat Palio*
Position: *Rear*
Rubber: *Natural rubber with graphite*
Backing: *Stainless Steel*
Blade Size: *14"*

NR-408

- Ⓞ OEM type, special for Fiat Doblo rear
- Ⓞ OEM quality
- Ⓞ Plastic arm, with wiper blade

13"



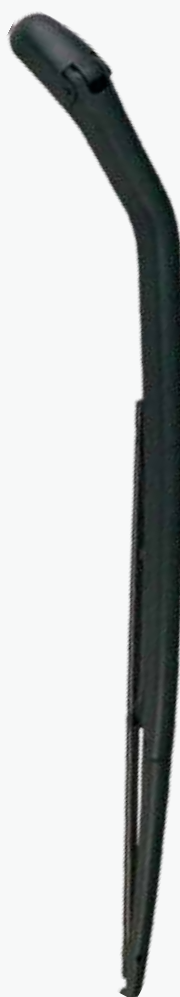
Application: *Fiat Doblo*
Position: *Rear*
Rubber: *Natural rubber with graphite*
Backing: *Stainless Steel*
Blade Size: *13"*

NR-407



- Ⓞ OEM type, special for Peugeot 206 rear
- Ⓞ OEM quality
- Ⓞ Plastic arm, with wiper blade

14"



Application: *Peugeot 206*
Position: *Rear*
Rubber: *Natural rubber with graphite*
Backing: *Stainless Steel*
Blade Size: *14"*

NR-406

- Ⓞ OEM type, special for Fiat Tempra SW rear
- Ⓞ OEM quality
- Ⓞ Plastic arm, with wiper blade

13"



Application: *Fiat Tempra SW*
Position: *Rear*
Rubber: *Natural rubber with graphite*
Backing: *Stainless Steel*
Blade Size: *13"*

NR-404

- ⊙ OEM type, special for Renault Kango Arka rear
- ⊙ OEM quality
- ⊙ Plastic arm



Application: *Renault Kango Arka*
Position: *Rear*
Rubber: *Natural rubber with graphite*
Blade Size:

NR-403

- ⊙ OEM type, special for Renault Clio II rear
- ⊙ OEM quality
- ⊙ Plastic frame

14"



Application: *Renault Clio II*
Position: *Rear*
Rubber: *Natural rubber with graphite*
Backing: *Stainless Steel*
Blade Size: *14"*

NR-402

- ⊙ OEM type, special for Fiat Dablo rear
- ⊙ OEM quality
- ⊙ Plastic frame

14"



Application: *Fiat Dablo*
Position: *Rear*
Rubber: *Natural rubber with graphite*
Backing: *Stainless Steel*
Blade Size: *14"*

NR-401



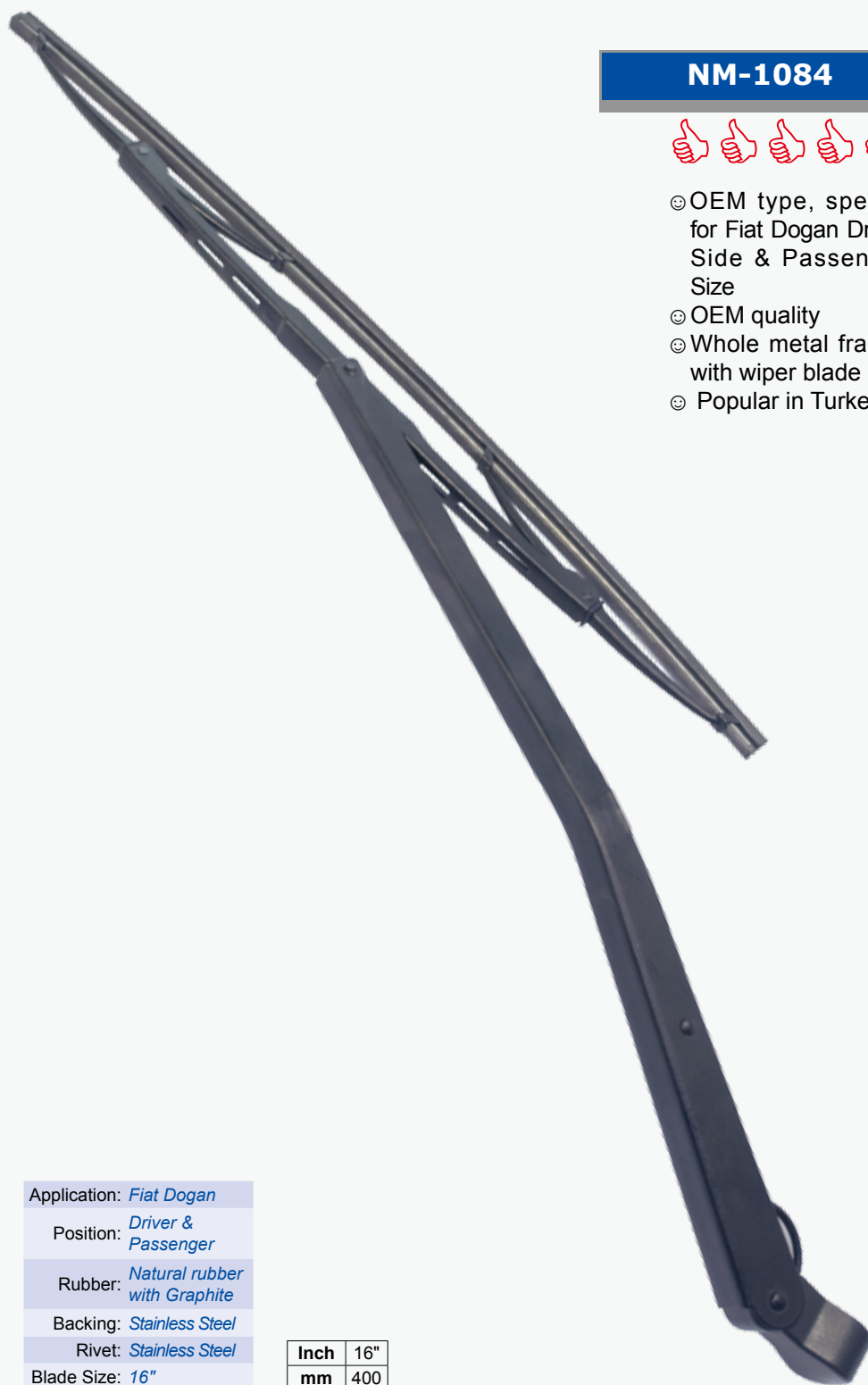
- ⊙ OEM type, special for Renault, Fiat, Lancia, Peugeot, Citroen rear
- ⊙ OEM quality
- ⊙ Plastic frame

16"

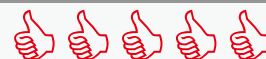


Application: *Renault, Fiat...*
Position: *Rear*
Rubber: *Natural rubber with graphite*
Backing: *Stainless Steel*
Blade Size: *16"*

Wiper Arms



NM-1084



- Ⓢ OEM type, special for Fiat Dogan Driver Side & Passenger Size
- Ⓢ OEM quality
- Ⓢ Whole metal frame, with wiper blade
- Ⓢ Popular in Turkey

Application: *Fiat Dogan*
Position: *Driver & Passenger*
Rubber: *Natural rubber with Graphite*
Backing: *Stainless Steel*
Rivet: *Stainless Steel*
Blade Size: *16"*

Inch	16"
mm	400

NM-1083



- ⊙ OEM type, special for Fiat Tempra Passenger side
- ⊙ OEM quality
- ⊙ Whole metal frame, with wiper blade
- ⊙ Popular in Turkey



20"

Application: *Fiat Tempra*
Position: *Passenger*
Rubber: *Natural rubber with graphite*
Backing: *Stainless Steel*
Blade Size: *20"*

NM-1082



- ⊙ OEM type, special for Fiat Tempra Driver side
- ⊙ OEM quality
- ⊙ Whole metal frame, with wiper blade
- ⊙ Popular in Turkey



20"

Application: *Fiat Tempra*
Position: *Driver*
Rubber: *Natural rubber with graphite*
Backing: *Stainless Steel*
Blade Size: *20"*

NM-1081

- ⊙ OEM type, special for Lada
- ⊙ OEM quality
- ⊙ Whole metal frame, with wiper blade
- ⊙ Popular in Russia



13"

Application: *Lada*
Position:
Rubber: *Natural rubber with graphite*
Backing: *Stainless Steel*
Blade Size: *13"*

NM-1061

- ⊙ OEM type, special for Volvo FH 12
- ⊙ OEM quality
- ⊙ OEM No.: 8189632



Application: *Volvo FH12*
Position: *Front*

NM-1051

- ⊙ OEM type, special for Samand
- ⊙ OEM quality



Application: *Samand*
Position: *Front*

NM-1050

- ⊙ OEM type, special for Peugeot
- ⊙ OEM quality



Application: *Peugeot*
Position: *Front*

NM-1049

- ⊙ OEM type, special for Peugeot
- ⊙ OEM quality



Application: *Peugeot*
Position: *Front*

NM-1031

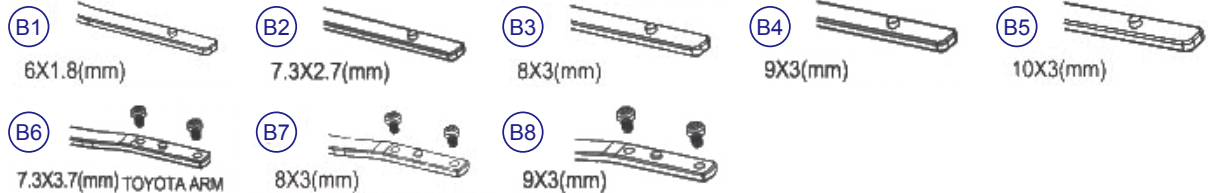
- ⊙ OEM type, special for Renault 9, 11
- ⊙ OEM quality



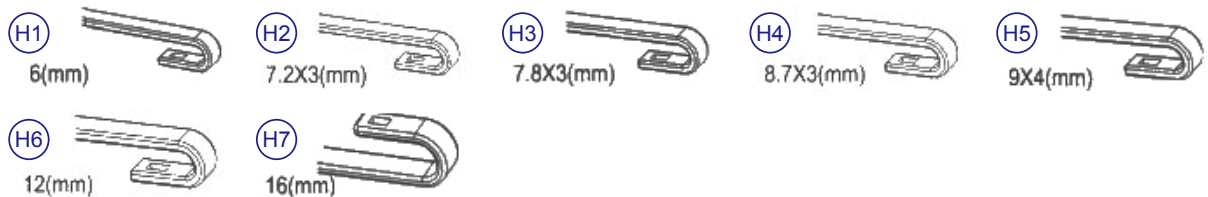
Application: *Renault 9, 11*
Position: *Front*

Wiper Arm Types

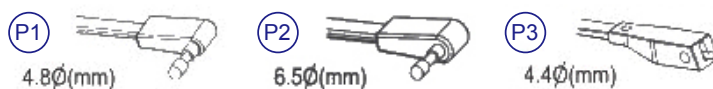
Bayonet Type



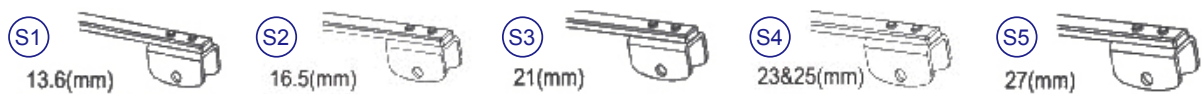
Hook Type



Pin Type



Saddle Type



Adapters

Multi-Function Adapter



M91

Bayonet: 7.3x2.7mm
Hook: 9x3, 9x4mm
Pin: \varnothing 4.8, \varnothing 6.5mm



M92

Bayonet: 7.3x2.7mm
Hook: 9x3, 9x4mm
Pin: \varnothing 4.8, \varnothing 6.5mm

Bayonet Adapter

B41 Bayonet: 7.3x2.7mm	B42 Bayonet: 9x3mm	B43 Bayonet: 9x3mm	B44 Bayonet: 9x3mm	B45 Bayonet: 9x3mm	B46 Bayonet: 7.3x3.7mm	B47 Bayonet: 7.3x3.7mm
B48 Bayonet: 7.3x3.7mm	B49 Bayonet: 7.3x2.7mm	B51 Bayonet: M3.5x6mm				

Hook Adapter

H01 Hook: 9x3mm	H02 Hook: 9x4mm	H03 Hook: 9x3mm	H04 Hook: 7.8x3mm	H05 Hook: 8.7x3mm	H06 Hook: 9x3mm	H07 Hook: 9x3mm
H08 Hook: 9x3mm	H09 Hook: 8x3mm	H10 Hook: 9x3mm	H11 Hook: 9x3mm	H12 Hook: 9x4mm	H13 Hook: 9x3mm	H14 Hook: 12x4mm
H15 Hook: 12x4mm	H16 Hook: 16mm	H17 Hook: 8x3mm	H18 Hook: 9x3mm	H19 Hook: 9x4mm	H20 Hook: 9x4mm	H21 Hook: 9x4mm

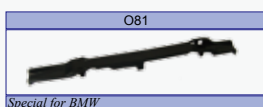
Saddle Cover Adapter

S61 Saddle Cover: 16.5mm	S62 Saddle Cover: 23x25mm	S63 Saddle Cover: 16.5mm
--	---	--

Pin Adapter

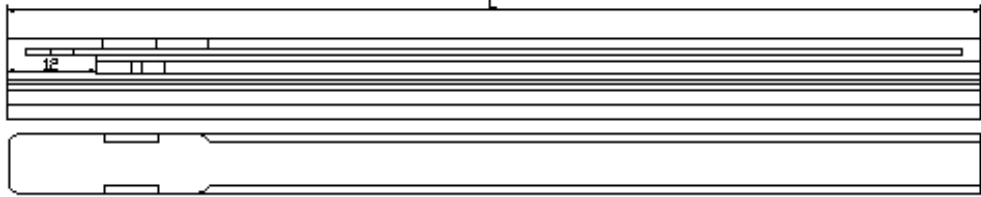
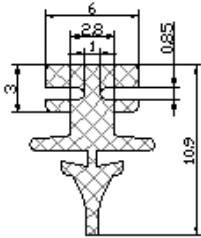
P41 Pin: \varnothing 4.8, \varnothing 6.5mm	P42 Pin: \varnothing 4.8mm	P43 Pin: \varnothing 4.4mm
---	--	--

Original Adapter



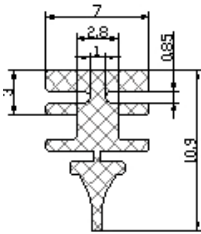
Wiper Rubber

RA



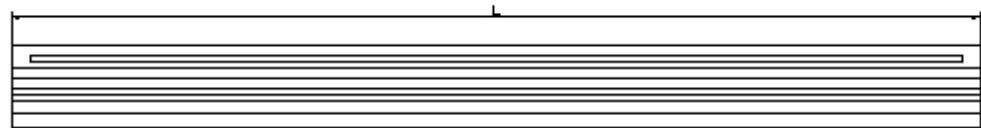
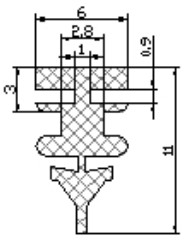
L(inch)	11"	12"	13"	14"	15"	16"	17"	18"	19"	20"	21"	22"	23"	24"	26"
SPEC.	RA280	RA300	RA330	RA350	RA375	RA400	RA420	RA450	RA475	RA500	RA525	RA550	RA590	RA600	RA650
							RA425	RA460	RA480		RA530				

RB



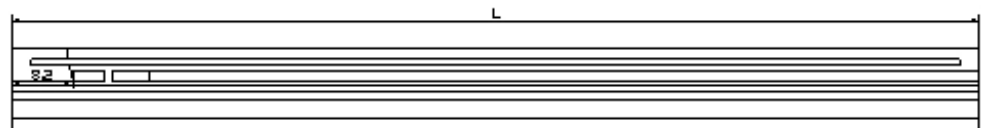
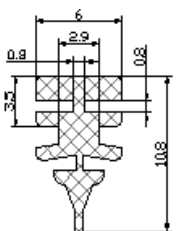
L(inch)	14"	15"	16"	17"	18"	19"	20"	21"	22"	24"
SPEC.	RB350	RB380	RB400	RB430	RB450	RB480	RB500	RB530	RB555	RB600
			RB410							RB610

RDO



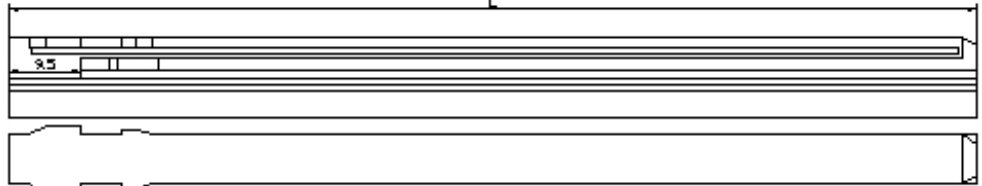
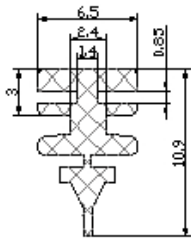
L(inch)	12"	14"	16"	17"	18"	19"	20"	21"
SPEC.	RDO300	RDO350	RDO400	RDO420	RDO450	RDO475	RDO500	RDO520

RD



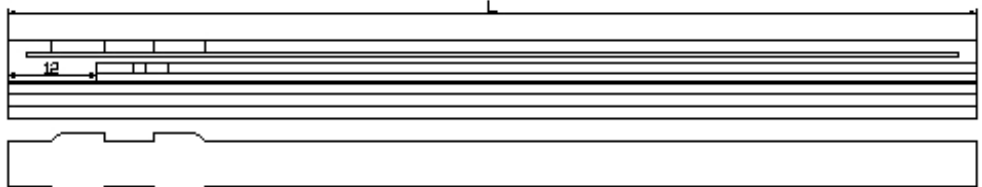
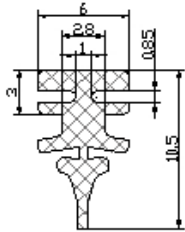
L(inch)	16"	17"	18"	20"
SPEC.	RD400	RD425	RD450	RD475

RE



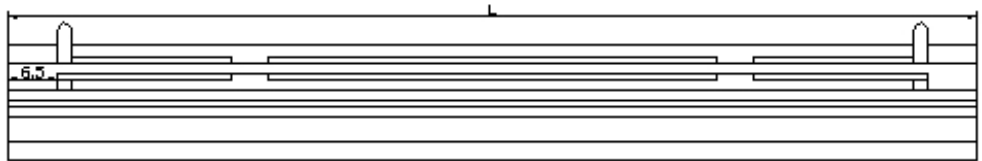
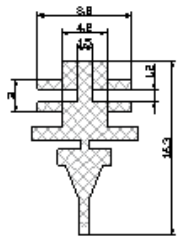
L(inch)	14"	15"	16"	17"	18"	19"	20"	21"	22"
SPEC.	RE350	RE375	RE400	RE425	RE450	RE475	RE500	RE525	RE550

RF



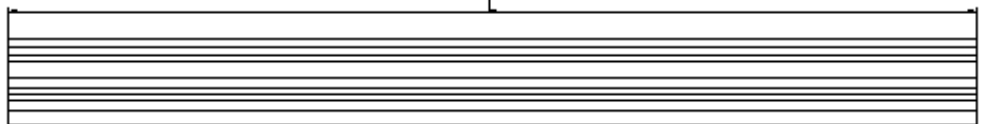
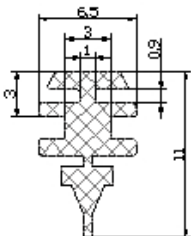
L(inch)	14"	15"	16"	17"	18"	19"	20"	21"	22"
SPEC.	RF350	RF375	RF400	RF425	RF450	RF475	RF500	RF530	RF550

RGB



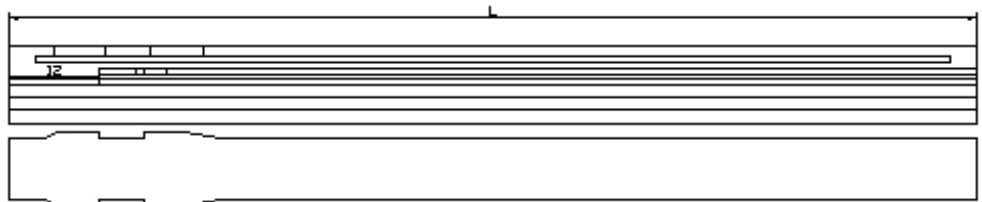
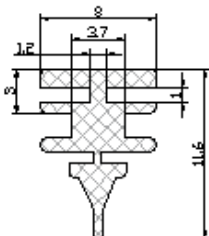
L(inch)	28"	32"	40"
SPEC.	RGB700	RGB800	RGB1000

RG



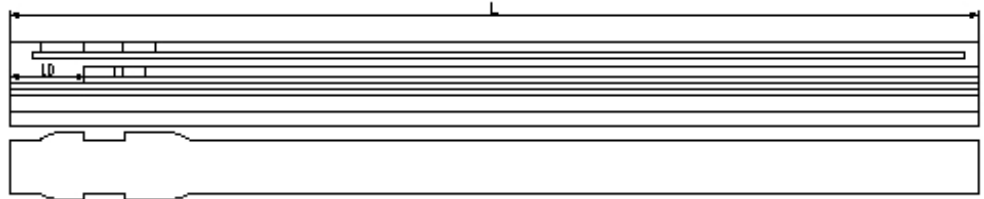
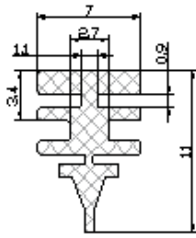
L(inch)	16"	20"	24"
SPEC.	RG400	RG500	RG600

RH



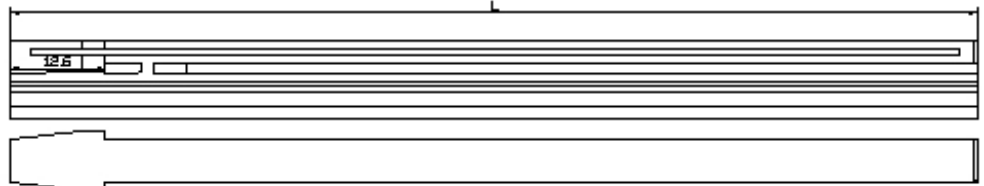
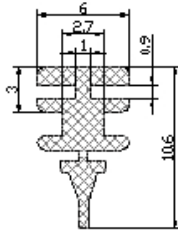
L(inch)	22"	24"	26"	28"
SPEC.	RH560	RH600	RH650	RH710

RJ



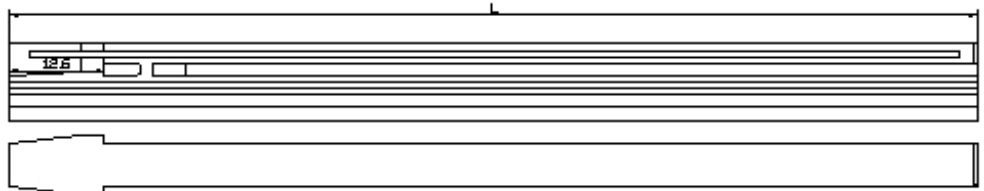
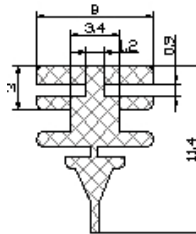
L(inch)	14"	16"	18"	20"	21"	22"	24"	26"	28"
SPEC.	RJ350	RJ400	RJ450	RJ500	RJ530	RJ550	RJ600	RJ650	RJ700

RN6



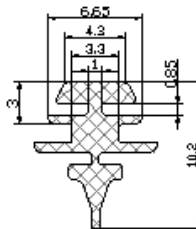
L(inch)	14"	15"	16"	17"	18"	19"	20"	21"	22"
SPEC.	RN350	RN375	RN400	RN425	RN450	RN475	RN500	RN525	RN550B

RN8



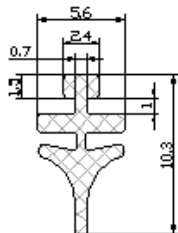
L(inch)		22"	24"
SPEC.		RN550	RN600

RS



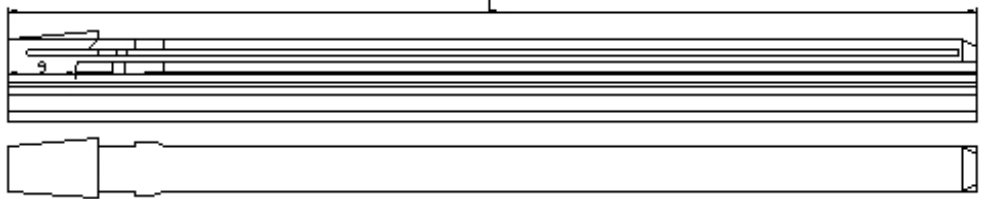
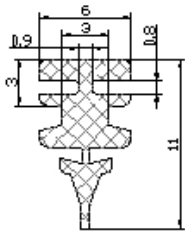
L(inch)	12"	13"	14"	15"	16"	17"	18"	19"	20"	21"	22"	24"
SPEC.	RS300	RS330	RS350	RS380	RS400	RS425	RS450	RS475	RS500	RS530	RS550	RS600
								RS480				RS610

RT



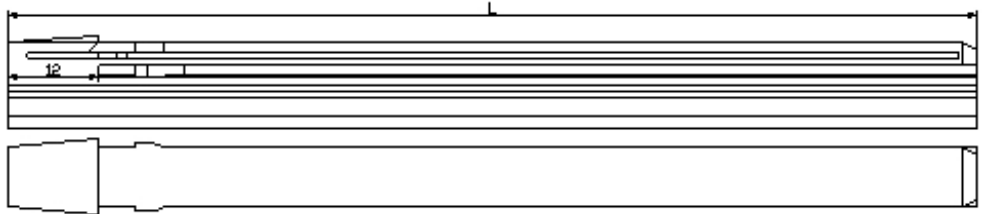
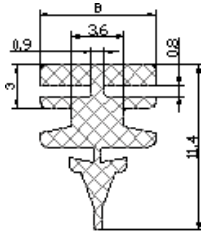
L(inch)	14"	RT362	16"	18"	Cherokee	20"	21"	22"	24"	28"	30"
SPEC.	RT350	RT362	RT400	RT450	RT456	RT500	RT530	RT550	RT600	RT28	RT750
									RT610		

RU6



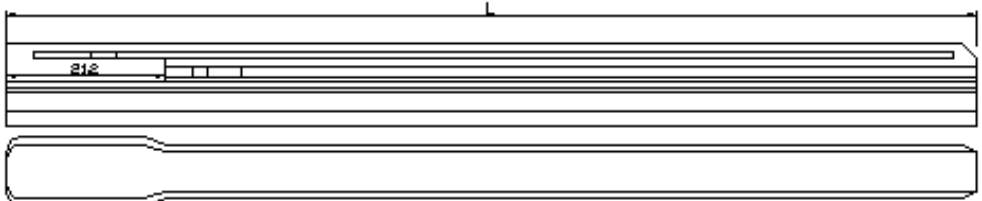
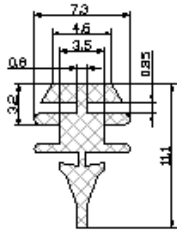
L(inch)	12"	13"	14"	15"	16"	17"	18"	19"	20"	21"
SPEC.	RU12	RU13	RU14	RU15	RU16	RU17	RU18	RU19	RU20	RU21

RU8



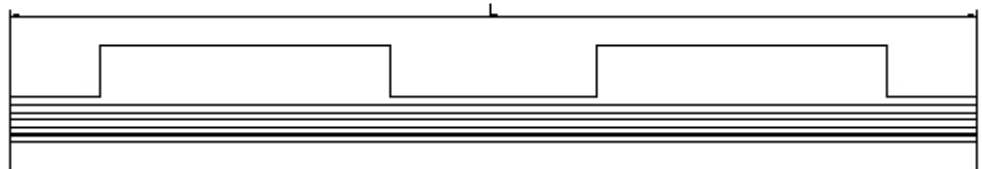
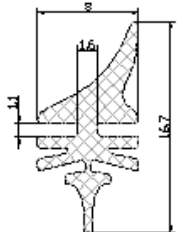
L(inch)	23"	24"	25"	26"
SPEC.	RU23	RU24	RU25	RU26

RWB



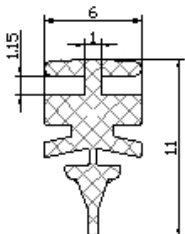
L(inch)	16"	18"	19"	20"	21"	22"	28"
SPEC.	RWB400	RWB450	RWB475	RWB500	RWB525	RWB550	RWB700

RY



L(inch)	16"	17"	18"	19"	20"	21"	22"	24"	26"	28"
SPEC.	RY400	RY425	RY450	RY475	RY500	RY525	RY550	RY600	RY650	RY700

RZ



L(inch)	16"	18"	20"	22"	24"	26"	28"
SPEC.	RZ16	RZ18	RZ20	RZ22	RZ24	RZ26	RZ28

Display Stands

DS-06



DS-03



DS-01

