

Small gain



HUGE RISK!

Why choose TEMCO genuine parts?

Original TEMCO Parts and Accessories adhere to stringent quality and environmental testing and are the result of intense research and development. With an original product, TEMCO customers can legitimately rely on the highest quality standards. **INFERIOR** auto parts may have a huge negative impact on the safety of a vehicle, not only causing wear and tear and damage but also accidents, as shown in the examples below:

Safety risks of **INFERIOR** auto parts:

- Increased dust permeability.
- Insufficient water stability.
- Inferior capacity.

Possible consequences:

Increased, premature engine wear and tear, shorter service intervals.



Safety risks of **INFERIOR** auto parts:

- Inferior finishing & born surface.
- Inferior design & construction .
- Insufficient strength and stability.

Possible consequences:

Structural failure, leakage failure, unstable and even lead accident and hurt human lives under some circumstance



Safety risks of **INFERIOR** auto parts:

- Inferior material
- Raw material lower quality.
- Inferior capacity.

Possible consequences:

Might malfunction under stress. Prone to damage. Diminished lifespan.



Safety risks of **INFERIOR** auto parts:

- Inferior material
- Raw material lower quality.
- Inferior capacity.

Possible consequences:

Unable to support the pressure. Easy to broken. Reduced service life

DURABLE, RELIABLE & DEPENDABLE

INCREASED SAFETY RISK.

INFERIOR auto parts are not subject to the TEMCO's high quality standards. They can seriously impair the functions and safety of your vehicle.

WARRANTY AND LIABILITY CLAIMS.

INFERIOR auto parts will not provide the same warranty and liability as original TEMCO parts.

www.0086PARTS.com

REDUCED SERVICE LIFE.

The frequently encountered **INFERIOR** auto parts can be a source of wear and tear and vehicle damage that simutan -eously increases repair & maintenance costs and shortens the life of the vehicle.

LESS DRIVING PLEASURE

INFERIOR auto parts are not tested for compatibility with the models for which they are offered. They cannot ensure the same driving dynamics and safety as genuine TEMCO parts.

Marketing@0086parts.com
Tel:0086-577-88802125
Fax:0086-577-88802126

EXPERTISE LEAD EXCELLENCE
Temco

WWW.0086PARTS.COM



Small gain

BIG RISK!

Noise!
Dust!
Poor braking!

Don't compromise your safety with inferior quality brake pads!

STEEL BACKING PLATE

Manufactured from steel & epoxy power coated to prevent rusting
Specially treated for high-temperature & electrostatic resistance
Engineered to meet original equipment design for fitment
Increased flexural strength with superior braking engagement.

MECHANICAL RETENTION

TEMCO's mechanical bond/retention system features hundreds of small extruded hooks that are molded directly into the friction material.

BACKING LAYER

TEMCO incorporates a special backing material at the bond line that creates a micro heat shield & optimized bond strength.

SURFACE PREPARATION

Ground for exceptional surface conditioning and flatness

INTEGRALLY MOLDED CONSTRUCTION

Friction compound is hot molded integrally into the backing plate for maximum shear strength

ULTRA PREMIUM BRAKING SOLUTION

- * NAO Formular, technology and formulation from Japan, Safety & Reliable;
- * Anti-noise, Low Dust, slow damage to Brake Disc;
- * Stable of friction coefficient, Official Friction Coefficient is 0.42fK;
- * Braking effort without change at high Temperature (up to 600 C);
- * Perfect Friction performance in raining condition;
- * With more than 1200 SKUs available, covering 98% in the aftermarket
- * ISO9001, SIRIM, CCC & ECE R90 accredited;
- * Perfect in appearance to meet different customer's demands;

NOT ALL CERAMIC BRAKE PADS ARE EQUAL

TEMCO Ceramic brake product cannot be compared to the competition, because not all ceramic brake pads are equal. Ceramic pads can be classified as NAO (non-asbestos organic) formulas and some low-cost manufacturers take that classification to its' extreme by including the entire NAO category as part o their ceramic offering. Some impostors claim to be ceramic, but in reality only contain a minimal amount of ceramic ingredients.

PAD CHAMFER

Engineered to eliminate noisy & vibration
Improved brake management quality

FRICTION MATERIAL

TEMCO performance friction compound of steel matrix & carbonceramic deliver superior stopping power and durability for any high-performance or severe-duty application

SLOTTED FRICTION

Adds friction flexibility to relieve stress
Aid in the removal of friction debris & water
Reduce stopping distance by 5%

HOT BOND SHIM

TEMCO's advance engineered shims feature a single layer of steel with a high-temperature rubber coating. Each shim is designed to dampen noise and hot bonded to eliminate delamination.



WORN OUT



vs.

BROKEN



DURABLE, RELIABLE & DEPENDABLE

TEMCO high-quality ceramic brake pads offers a significant improvement in ride quality, handling, safety, & durability compared to inferior-quality options. In extreme cases, inferior brake pads could completely fail, leading to a loss of braking ability. This is a nightmarish scenario that can result in accidents and severe injuries

- **Reduced stopping distances:** Low-quality pads may not create enough friction against the brake rotor, leading to increased stopping distances. This can be especially dangerous in emergency situations.
- **Fading:** Inferior materials may not withstand high temperatures well, causing the brakes to fade. This means the braking performance gets progressively worse as the brakes heat up, making it even harder to stop the car.
- **Increased wear and tear:** Low-grade pads tend to wear out faster, requiring more frequent replacements. This not only adds to maintenance costs but also raises the risk of ending up with worn-out pads unexpectedly.
- **Noise and vibration:** Substandard pads may generate unpleasant grinding noises or cause vibrations in the brake pedal during braking.



Marketing@0086parts.com
Tel:0086-577-88802125
Fax:0086-577-88802126

EXPERTISE LEAD EXCELLENCE
Temco

WWW.0086PARTS.COM

www.0086PARTS.com

Premium quality

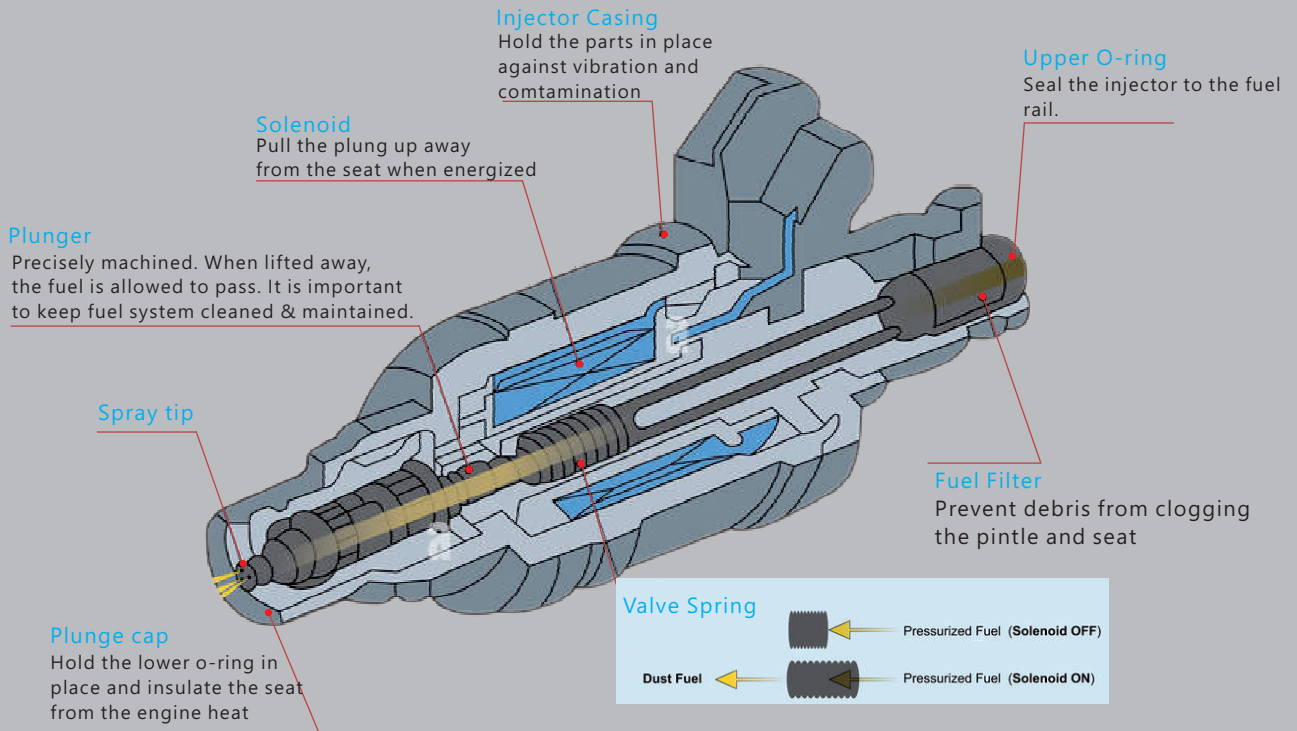
FUEL INJECTOR

Quiet!
Durable!
Reliable!

Don't compromise your safety with inferior quality fuel injector

Marketing@0086parts.com
Tel:0086-577-88802125
Fax:0086-577-88802126

EXPERTISE LEAD EXCELLENCE
Temco



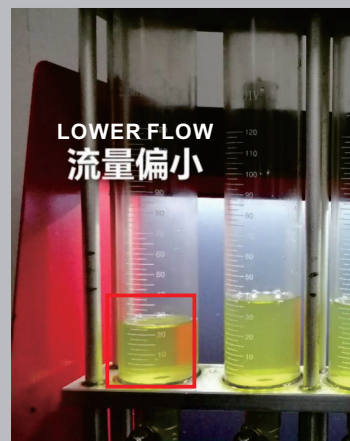
Precise Spray Pattern: TEMCO high-quality fuel injector have a very precise spray pattern. The fuel is atomized into a fine mist, which ensures that it mixes evenly with the air in the engine's cylinders. This leads to more complete combustion, which in turn results in better fuel economy and lower emissions.

Durability: The fuel injector is located in a harsh environment, and it is constantly exposed to high temperatures and pressures. TEMCO high-quality fuel injectors are made from durable materials that can withstand these conditions.

High Flow Rate: TEMCO fuel injector delivers the accurate amount of fuel at the right pressure, even at a higher engine speeds. It projects a high flow rate to deliver the necessary amount of fuel, so as to release full engine power

Compatibility: Different engines have different requirements for fuel injectors. TEMCO is specially OE prototype for specific engine's fit, form and parameter to respond quickly to changes in engine demand

COMPARISON OF TEMCO FUEL INJECTOR VS INFERIOR QUALITY FUEL INJECTORS



DURABLE, RELIABLE & DEPENDABLE

TEMCO high-quality fuel injectors ensure that the engine is running at its best. This will lead to better fuel economy, lower emissions, and improved performance. Risks of inferior fuel injector includes

- **Poor Engine Performance:** Low-quality fuel injectors deliver insufficient fuel into the combustion chamber. It lead to incomplete combustion, resulting in reduced engine power & overall performance
- **Reduced Fuel Efficiency:** Clogged or malfunctioning injectors can disrupt the optimal air-fuel mixture needed for combustion. It reduces fuel efficiency and more gas consumption
- **Increased Emissions:** Inefficient combustion can result in higher emissions, air pollution and environmental damage
- **Risk to Engine Components:** A malfunctions injector may lead to catalytic converter damage and premature wear



www.0086PARTS.com

WWW.0086PARTS.COM



High Quality

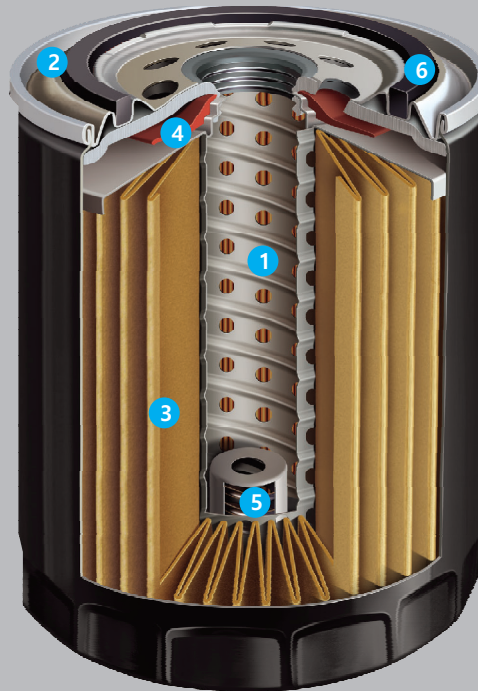
OIL FILTER

Don't compromise your safety with inferior quality oil filter!

POWERFUL PERFORMANCE LASTING QUALITY

- 1 Metal spiral-wound center tube**
Reinforces internal strength for durability.
- 2 End caps**
Prevent trapped contaminants from reaching your engine.
- 3 Premium media**
Media blend provides 99% filtration efficiency.
- 4 Silicone anti-drain back valve**
Protects against dry starts and doesn't dry out.
- 5 Relief valve**
Prevents oil restriction and ensures proper oil flow.
- 6 Nitrile sealing gasket**
Lubricated gasket for long life

COVERING 99%
APPLICATIONS
IN THE MARKET



Environment friendly
metal-free
cartridge filters



OE Style
canister filters



Oil Pressure Warning Light



Oil Leakage



Overheating Engine



Yields to oil pressure
result in deformation



Grey or black smoke
from Exhaust



By-pass valve failure

DURABLE, RELIABLE & DEPENDABLE

Proper Fit

A TEMCO Premium Oil Filter will fit and stay on the vehicle the same way as the original filter that is put on during car production.

Traps small engine damaging particles

A high glass content is woven into the blended media, providing greater efficiency and strength

Holds on to engine damaging particles

Premium filtration media has the capacity to hold up to 14 grams of dirt from entering the engine

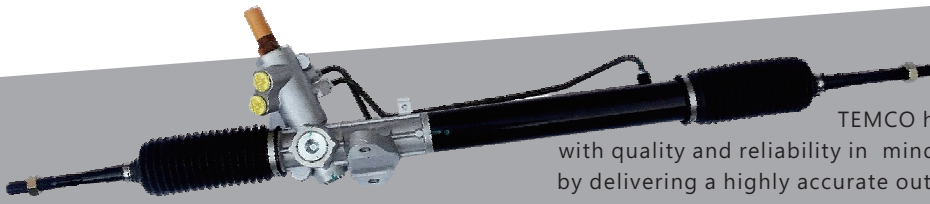


www.0086PARTS.com

Premium quality

HI-QUALITY NEW HYDRAULIC POWER STEERING PRODUCTS

Don't compromise your safety with inferior quality hydraulic parts!



HYDRAULIC STEERING RACK

TEMCO hydraulic steering systems are manufactured with quality and reliability in mind. They provide dependable driver assistance by delivering a highly accurate output at any speed – when it matters the most.

FEATURES:

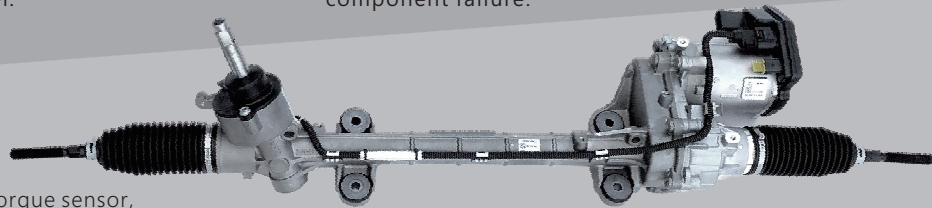
- * **Components:** Made with robust, durable materials that resist wear and tear. This includes high-quality seals, pistons, and hoses that can withstand high pressures and temperatures.
- * **Precision Machining:** Tighter tolerances in components lead to smoother operation and less friction. This translates to a more responsive steering feel.
- * **Leak Prevention:** Superior seals & tighter connections minimize the risk of leaks, which can lead to a loss of power steering fluid and reduced steering effectiveness.
- * **Heat Dissipation:** Efficient heat dissipation keeps the system cool, preventing overheating and potential component failure.

ELECTRIC POWER STEERING

Based on the steering signal recorded by the torque sensor, the ECU calculates the optimum steering assistance and forwards this information to the electric motor, which provides the necessary force.

FEATURES:

- * **Precise Electric Motor Control:** Advanced software and sensors provide a more precise and responsive steering feel compared to lower-quality systems with less sophisticated control algorithms.
- * **Improved Safety:** Sharper steering response better road feel contribute to safer driving, especially in evasive maneuvers.
- * **Weight Savings:** The absence of a hydraulic pump and fluid contributes to a lighter vehicle weight, which can further improve fuel efficiency.
- * **Quieter Operation:** No engine-driven pump translates to a quieter driving experience with less noise from the steering system.



HYDRAULIC POWER STEERING PUMP

TEMCO high-quality power pump is the heart of the system. It directly translates to the overall performance, reliability, & efficiency.

FEATURES:

- * **Robust Construction:** Built with premium materials like heavy-duty cast iron or forged steel for exceptional durability and resistance to wear and tear.
- * **High-Quality Seals:** Utilizes high-performance seals that can withstand high pressures and temperatures without degrading, preventing leaks and maintaining consistent performance.
- * **Improved System Performance:** Delivers consistent and reliable power for smoother operation of hydraulic machinery. This translates to better control and precision during tasks.



DURABLE, RELIABLE & DEPENDABLE

TEMCO hydraulic power steering products includes racks, pumps, pump kits, pulleys, reservoirs, & gearboxes—all engineered to meet or exceed OE specifications in performance, fit, & function with rigorous testing and quality control. Safety risks of **inferior power steering parts** include

- **Loss of Steering Control:** Worn or faulty components lead to leaks, reduced power assist, or even complete failure. This can make steering difficult or impossible, increasing the risk of accidents.
- **Increased System Wear:** Inferior parts may not be properly machined or wear out faster, leading to increased friction and heat generation within the system. This may lead to catastrophic system failure.
- **Environmental Hazards:** Hydraulic fluid leaks from faulty parts can be a serious environmental hazard, polluting soil and waterways.



www.0086PARTS.com



Marketing@0086parts.com
Tel:0086-577-88802125
Fax:0086-577-88802126

EXPERTISE LEAD EXCELLENCE
Temco

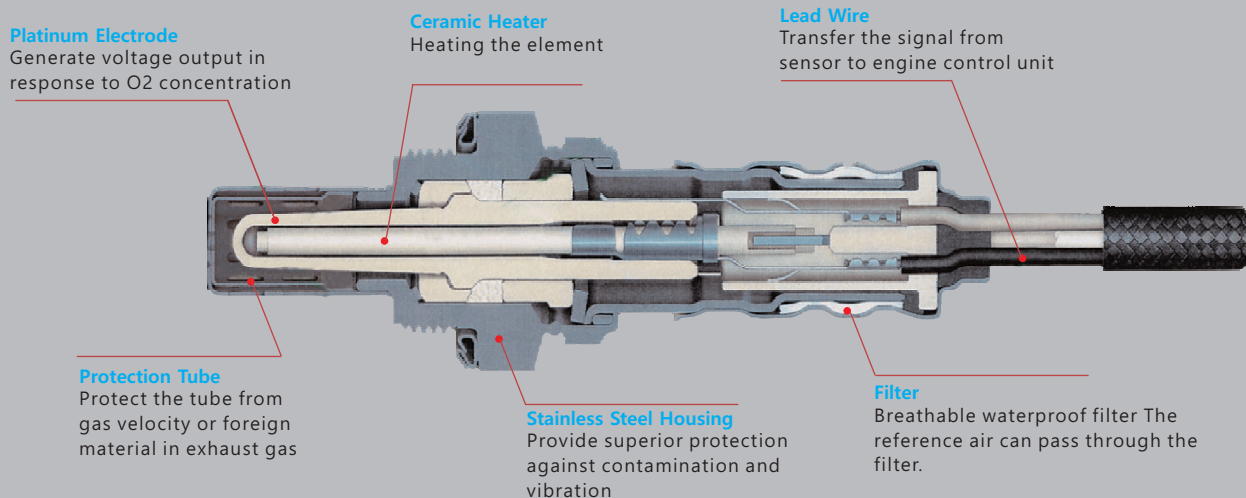
WWW.0086PARTS.COM

Premium Quality

OXYGEN SENSOR

Quiet!
Durable!
Reliable!

Don't compromise your safety with inferior quality O2 sensor



IMPROVED ENGINE RESPONSE AND PERFORMANCE

LOWER EMISSIONS

IMPROVED FUEL ECONOMY

LONGER SENSOR LIFE

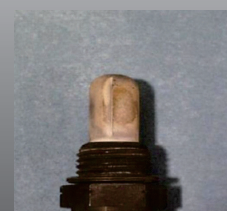
MEET OE SPECIFICATION



Rich Fuel Mixture



Lead Poisoning



Silicon Poisoning

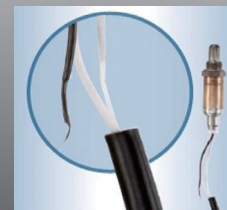
SYMPTOMS OF DEFECTIVE OXYGEN SENSOR WITH INFERIOR QUALITY



Ethylene Glycol (Antifreeze) Contamination



External oil contamination



Broken Signal Line

REPLACE WITH TEMCO HIGH QUALITY OXYGEN SENSOR FOR BETTER PERFORMANCE AND A CLEANER ENVIRONMENT

DURABLE, RELIABLE & DEPENDABLE

TEMCO high-quality oxygen sensors are precision made for outstanding performance & manufactured to meet and exceed all original equipment specification and test requirements 100% OEM. Safety risks of inferior O2 sensor include:

- **Increased emissions:** Inferior sensors contribute to increased emissions, harming the environment.
- **Decreased Fuel Economy:** When the O2 sensor fails, the computer won't receive accurate readings of the air-fuel mixture, leading to reduced fuel efficiency & lower gas mileage.
- **Engine Damage:** A constantly rich fuel mixture can cause excessive wear on the engine components
- **Reduced engine power:** A lean fuel mixture can lead to a lack of power and hesitation during acceleration.



Marketing@0086parts.com
Tel:0086-577-88802125
Fax:0086-577-88802126

EXPERTISE LEAD EXCELLENCE
Temco

WWW.0086PARTS.COM



Premium quality

FUEL PUMP

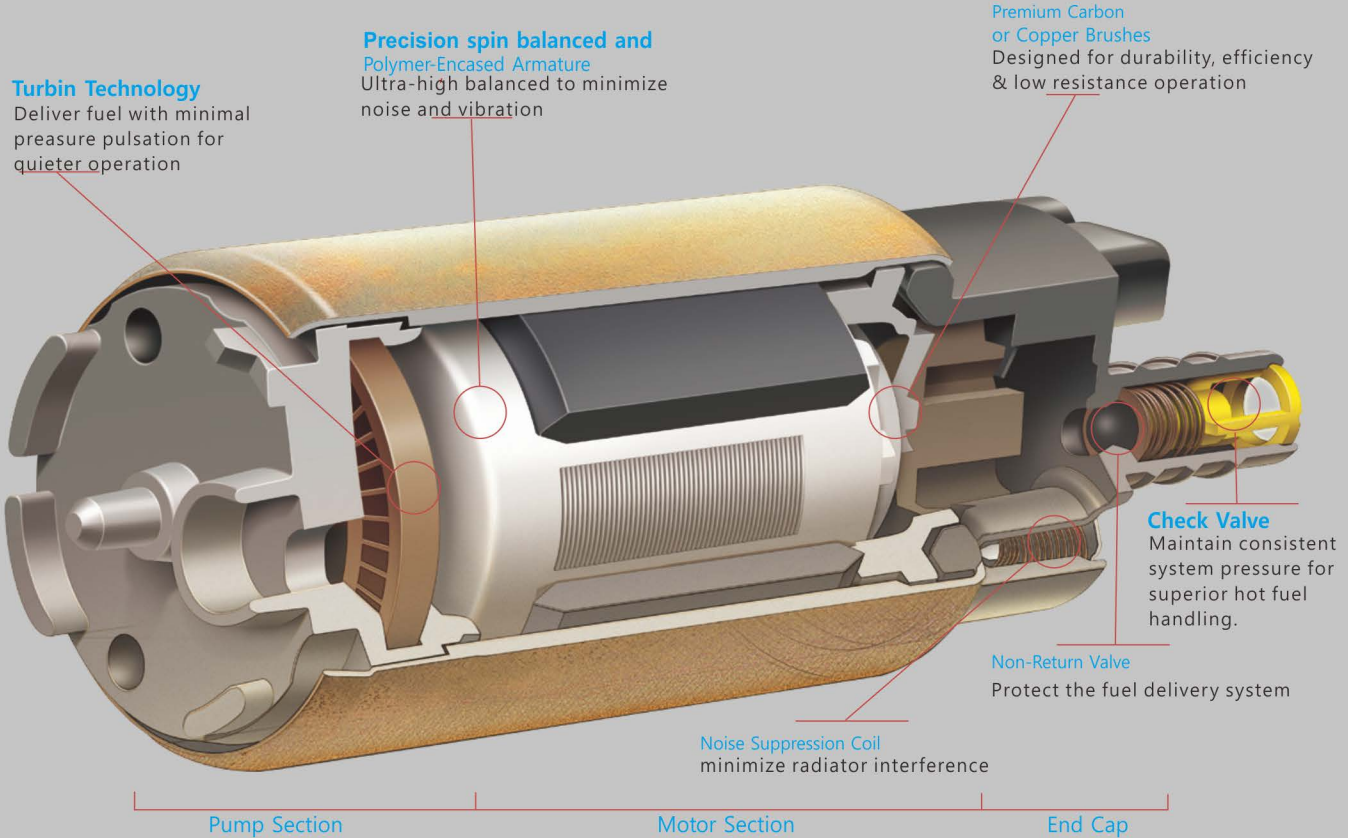
Quiet!
Durable!
Reliable!

Don't compromise your safety with inferior quality fuel pump

Marketing@0086parts.com
Tel:0086-577-88802125
Fax:0086-577-88802126

EXPERTISE LEAD EXCELLENCE
Temco

WWW.0086PARTS.COM



TEMCO Turbine Fuel Pumps

TEMCO brings the benefits of turbine fuel pumps to the aftermarket for late-model vehicles, as well as for many earlier applications with older technology fuel pump. The superior design of TEMCO Turbine Pumps virtually eliminates fuel pulsation and noise, reduces hot-start problems, and prevents on-board electronics interference with the best electromagnetic shielding in the industry. These pumps are produced with ISO9001 & IATF16949 quality accredited production lines, built and tested to the OE fit, form, function and quality standard to ensure a long, reliable service life

Enhanced Product Design & Performance

TEMCO state-of-the-art turbine fuel pumps offer many advantages when compared to older roller-cell and inner-gear pump designs. TEMCO turbine pump design offers silent operation and eliminate fuel pulsation for improved drivability. In addition the core components of this turbine design never come in

Superior Turbine Pump Design

contact with one another, significantly reducing wear & delivering a longer service life.

Impeller ring unique design features evenly-spaced blades to eliminate fuel pulsation and unstable fuel pressure & combustion problems

Precision, spin-balanced armature allows operation in excess of 7,000 rpm while reducing noise & vibration for quiet operation, & **polymer encasing** reduces turbulence in the pump & protects the windings from contamination that can shorten service life.

Premium carbon brushes have an even surface for more direct contact and utilize advanced materials for longer, reliable service life.

Noise suppression coil virtually eliminates radio frequency interference.

Non-return valve maintains fuel system pressure between starts, reducing vapor lock and hot start problems

Inferior quality fuel pump usually are made with cheaper materials & less robust construction methods, these pumps are more susceptible to wear & tear, leading to shorter lifespans & potential breakdowns. It may cause engine hesitation, reduced fuel efficiency, & even damage to the engine



DURABLE, RELIABLE & DEPENDABLE

TEMCO high-quality fuel pumps offers a significant improvement in ride quality, handling, safety, and durability compared to inferior-quality options. Safety risks of **inferior fuel pumps** include

- **Fire Hazard:** Leaks or malfunctions in the pump can lead to fuel spills. Inferior materials is more prone to cracking or breaking, increasing the risk of leaks & leaked fuel might ignite, causing a fire.
- **Engine Failure:** Inconsistent fuel pressure and flow from a failing pump can disrupt engine operation.
- **Reduced Power & Control:** Engine output will be limited if the pump can't deliver fuel at the correct pressure,
- **Emissions Issues:** Incomplete fuel combustion leads to leads to a higher concentration of unburnt fuel in the exhaust, increasing harmful emissions released into the environment.



www.0086PARTS.com



Remanufactured, not rebuild!

ALTERNATOR

Don't compromise your safety with inferior quality rebuild alternator

Protective cap

(only compact alternator)
Check for possible damages.
100 % replaced with a new one in case of defects.

Slip-ring end shield

Test of the antifriction bearing seat.
100 % replacement of the plastic guides,
anti-splash bushings and rubber components.

Pulley

Visual inspection of the poly-V pulley to identify any possible damages. 100 % of the pulleys made out of sheet metal are replaced. Corrosion protection via paint or galvanization

Rectifier (diode board)

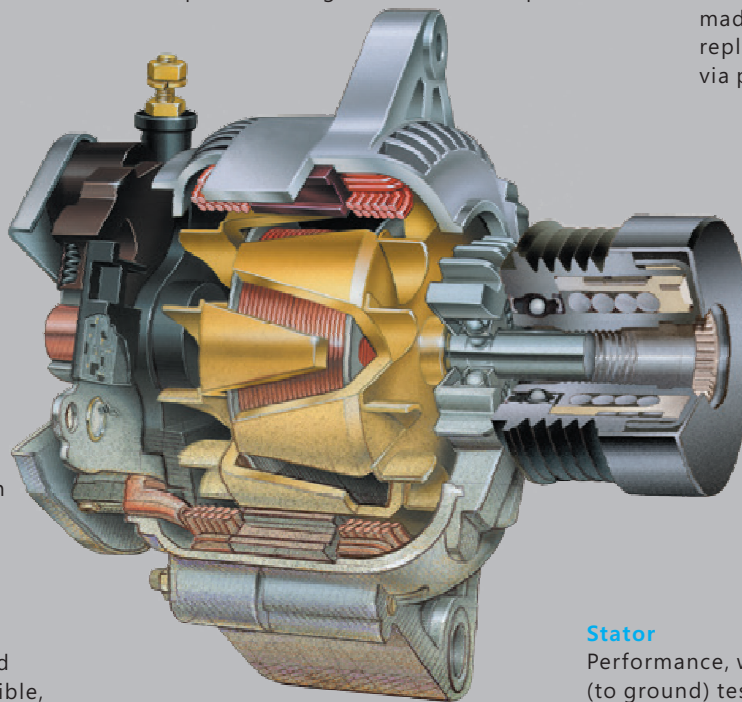
Diode test in forward and reverse direction. In case of defect: 100 % replaced with a new one.

Rotor

Overturning of slip rings. In case they fall below the minimum size, replaced with new ones. Short circuit to ground test.

Electronic field regulator

Functional test of hybrid and monolith regulators. If possible, old types of regulators are substituted by modern ones. Replacement of carbon brushes in case their length falls below the minimum size.



Roller bearings/ grooved ball bearings

100 % replacement by new one.

Drive end shield

Test of the roller bearing seat.

Stator

Performance, winding and short-circuit (to ground) tests. New insulation of the winding if there are any damages.

FULL COMPATIBILITY WITH SENSITIVE ELECTRONICS SYSTEM

- Built to last using the highest quality materials and the most technologically advanced manufacturing processes
- Remanufactured using more new parts than any other unit
- 100% exhaustive multipoint quality and performance testing throughout the remanufacturing process ensures optimum starting and charging performance under all operating conditions
- Every unit is full-load tested to guarantee compliance with **TEMCO** strict performance specifications
- Voltage regulator 100% tested for OE voltage specifications
- Rectifier 100% tested
- 100% computerized/full-load tested for total performance and output
- Diodes 100% tested (replaced with new as required)
- Rotor 100% performance-tested for maximum electrical output
- 100% new long life sealed bearings with special high load, high temperature grease
- Stator 100% insulation and phase balance tested
- Slip rings 100% new or remachined to +/- .05mm, the tightest tolerance in the industry
- 100% new long life self-lubricating brushes
- 100% new clutch pulleys
- All terminals, insulators and hardware provided
- All mounting points 100% gauged & resized or rethreaded for proper fit



DURABLE, RELIABLE & DEPENDABLE

TEMCO high-quality remanufactured alternator offer a significant improvement in ride quality, handling, safety & durability compared to inferior options. Safety risks of **inferior rebuild alternator** include

- **Reliability:** Inferior rebuilds may have hidden defects or subpar components, leading to unexpected failures while driving. This can leave you stranded & vulnerable, especially at night or in bad weather
- **Electrical Hazards:** Poorly rebuilt alternators might produce unstable voltage output, damaging sensitive electronic components in your vehicle. Over time, this can lead to costly repairs or even fires.
- **Shortened Lifespan:** Inferior rebuilds tend to wear out faster due to low-quality materials or inadequate testing. Premature failure can leave you stranded on the road..



www.0086PARTS.com

Remanufactured, not rebuild!

Starter

Don't compromise your safety with inferior quality rebuild starter

Marketing@0086parts.com
Tel:0086-577-88802125
Fax:0086-577-88802126

Armature with commutator

100 % finish turns of the commutator. If falling below minimum diameter: replacement of the armature by a new one. Radial runout test of commutator and armature package. Short circuit test to ground, windings test and measurement of the commutator resistance.

Solenoid switch

100 % replacement of switch cover and contact bridge. Functional test.

Pole housing

Cleaning. In case of permanently excited starters: Replacement of magnets and retention clips if damaged. Magnetization. In case of electrically excited starters: Cleaning. Short circuit to ground test of the excitation winding. If necessary, new impregnation of the winding bands.

Brush holder

Replaced with a new part in case of heavy wear or damages. Replacement of carbon brushes when falling below minimum length.

Drive end shield

100 % replacement of bushings, roller bearings and radial seal ring.

Commutator end shield

100 % replacement of the bushing. Calibration of the bushing seat.

Engagement lever

Visual inspection. Replaced with a new one in the case of heavy wear or damages.

Starter pinion with overrunning clutch

Disassembly and cleaning of the overrunning clutch. Replaced with a new one in the case of heavy wear or damages. 100 % replacement of bearings, rollers, springs, supporting ring and plastic inserts.

Planetary gear

Disassembly. Functional test of the needle bearings while installed. 100 % replacement of bushings of the intermediate bearing.

- Solenoid with 100% new terminal hardware, contact face and high temperature cap, are completely disassembled & computer performance tested for pull/hold strength
- 100% new long life self-lubricating brushes
- Gear train all new bushings
- Drive with 100% new bushings, springs, rollers, washers caps and high-temperature lubrication
- Gear train lubricated with OE-specified grease providing protection from -40°F to +302°F
- 100% full-load tested for maximum torque, amp draw and RPM
- Permanent magnets/field coils tested for field strength and shorts (replaced with new as required)
- Armature continuity tested, gauged, straightened and shimmed
- All electrical connections resoldered
- All shaft splines and load bearing surfaces lubricated with OE high-temperature grade
- Drive gear 100% chamfer tested
- All seals and gaskets replaced per original equipment
- Commutator remachined to **TEMCO** tight tolerances



DURABLE, RELIABLE & DEPENDABLE

TEMCO high-quality remanufactured starters offer a significant improvement in ride quality, handling, safety & durability compared to inferior-quality options. Safety risks of **inferior rebuild starter** include

- **Fire Hazard:** Inferior rebuild starters may use substandard wiring that is not rated for the high currents that a starter motor draws. This can lead to overheating and eventually an electrical fire.
- **Short Circuit:** Poorly rebuilt starters may have loose connections or improperly crimped terminals. This can create a short circuit, which can damage the starter solenoid or other electrical components in the vehicle.
- **Failure to Start:** The most common problem with inferior rebuild starters is that they simply won't start the engine. This can leave you stranded and vulnerable, especially at night or in bad weather.



www.0086PARTS.com



EXPERTISE LEAD EXCELLENCE
Temco

WWW.0086PARTS.COM

Small gain

BIG RISK!

**Wear!
Misalignment!
Risk of failure!**

Don't compromise your safety with inferior quality Control arm



**TEMCO
Premium**



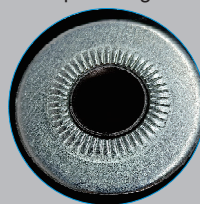
**Inferior
Quality**



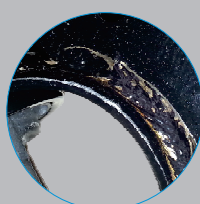
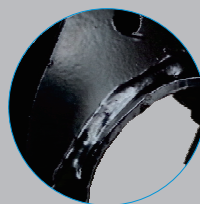
THICKER: A thicker control arm can handle greater forces from bumps, potholes, and aggressive cornering without bending or breaking. This translates to a longer lifespan for the component and reduces the risk of suspension failure



HEAVIER: A heavier control arm with more mass can absorb vibrations from road imperfections better. This translates to a quieter and more comfortable ride for passengers.



BETTER BUSHING: Worn-out control arm bushings allow excess movement between the control arm & other suspension components. Better bushings minimize this deflection, allowing the wheels to maintain proper alignment and react more directly to steering commands.



LASER WELDING: With better control over the laser beam, the weld becomes more focused & penetrates deeper. This creates a stronger bond between the parts of the control arm, improving its overall strength & durability.

DURABLE, RELIABLE & DEPENDABLE

TEMCO high-quality control arm offers a significant improvement in ride quality, handling, safety, and durability compared to inferior-quality options. Safety risks of inferior control arm:

- Increased Risk of Failure.
- Loss of Vehicle Control.
- Compromised Braking Performance
- Uneven Tire Wear
- Reduced Handling and Stability



www.0086PARTS.com

Marketing@0086parts.com
Tel:0086-577-88802125
Fax:0086-577-88802126

EXPERTISE LEAD EXCELLENCE
Temco

WWW.0086PARTS.COM



High Quality

Ball Joint

Don't compromise your safety with inferior quality ball joint!

Clamping rings

Spring steel clamping rings ensure the security of the rubber boot - supporting the static and dynamic sealing areas of the ball pin.

Protective rubber boot

The rubber boot is one of the most important components of a ball joint. The boot ensures that the ball joint assembly is protected against moisture, road debris and is resistant to heat, oil and weathering from the direct effects of sunlight. It is able to seal the joint in every position of the ball pin and at any angle of deflection.

Rodamiento de acero endurecido

High-strength steel construction delivers exceptional resistance to wear and tear, even under demanding driving conditions. Unlike some plastic alternatives, steel bearings won't succumb to high temperatures or heavy loads, offering a longer lifespan for the ball joints. das, lo que ofrece una mayor vida útil de las rótulas.

High performance grease

The grease used by TEMCO has been specifically designed for the lubrication of smooth-running ball joints. The semi-synthetic base oil is thickened with polyuria and is free of heavy metals and black solid lubricants. Special additives are used to increase adhesion to steel and plastic components, which improves the dampening effect between the friction bodies.

Steel cap

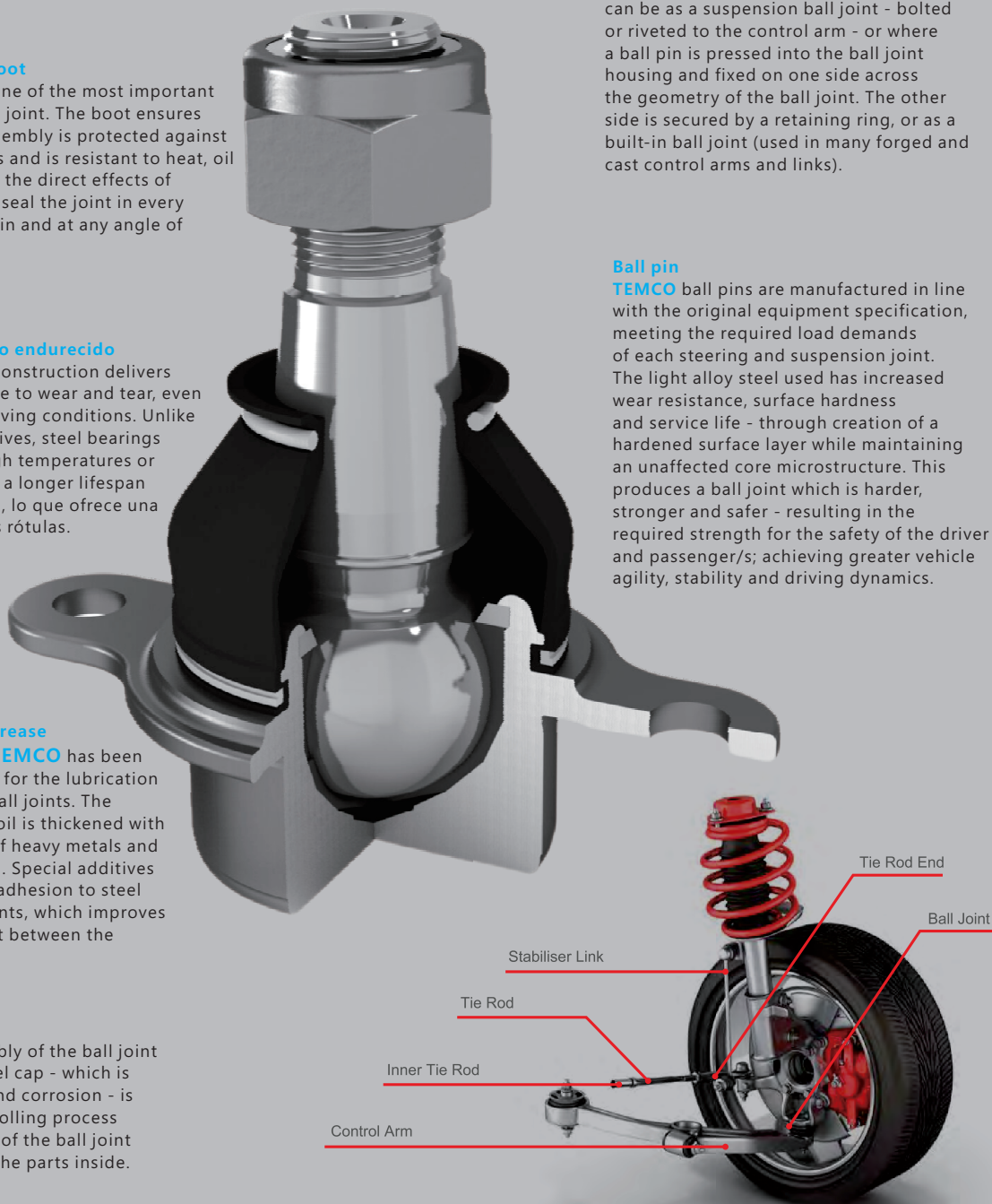
To finalise the assembly of the ball joint components, the steel cap - which is resistant to impact and corrosion - is sealed in place by a rolling process applied to the edges of the ball joint housing, protecting the parts inside.

Casting/housing

The ball joint housing is designed precisely to meet the load and function requirements of each application. This can be as a suspension ball joint - bolted or riveted to the control arm - or where a ball pin is pressed into the ball joint housing and fixed on one side across the geometry of the ball joint. The other side is secured by a retaining ring, or as a built-in ball joint (used in many forged and cast control arms and links).

Ball pin

TEMCO ball pins are manufactured in line with the original equipment specification, meeting the required load demands of each steering and suspension joint. The light alloy steel used has increased wear resistance, surface hardness and service life - through creation of a hardened surface layer while maintaining an unaffected core microstructure. This produces a ball joint which is harder, stronger and safer - resulting in the required strength for the safety of the driver and passenger/s; achieving greater vehicle agility, stability and driving dynamics.



DURABLE, RELIABLE & DEPENDABLE

TEMCO high-quality ball joint offer a significant improvement in ride quality, handling, safety & durability compared to inferior-quality options. Safety risks of inferior ball joints include:

- **Steering Control:** A faulty ball joint can compromise vehicle's suspension & steering, making it difficult to control the vehicle & increasing the risk of swerving or experiencing a complete loss of steering.
- **Suspension Performance:** A damaged ball joint negatively impacts vehicle's suspension system, which result in a rough and uncomfortable ride, reduced handling performance, & poor stability, especially during turns.
- **Complete Failure:** In the worst-case scenario, a severely worn or failed ball joint can result in the wheel separating from the vehicle altogether. This loss of control can cause accidents and endanger lives



www.0086PARTS.com



Marketing@0086parts.com
Tel:0086-577-88802125
Fax:0086-577-88802126

EXPERTISE LEAD EXCELLENCE
Temco

WWW.0086PARTS.COM

Small gain

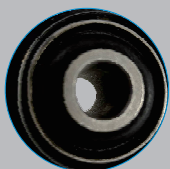
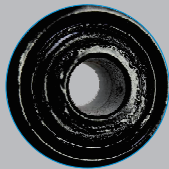
BIG RISK!

**Wear!
Misalignment!
Risk of failure!**

Don't compromise your safety with inferior quality shock absorber

**TEMCO
Premium**

**Inferior
Quality**



BEARING: Premium high quality materials like low-friction polymers, stronger steel races, and robust seals ensure smooth operation, minimize wear, and protect internal components from dirt and moisture. Inferior quality uses weaker plastics, softer metals, and is less effective which leads to increased friction, faster wear, and potential damage from contaminants.

PISTON: Premium quality are made from high-quality, wear-resistant materials like chrome-plated steel. This ensures a smooth, friction-reducing surface and resists corrosion. Inferior quality uses lower-grade steel or softer materials that are more prone to wear & tear. This can lead to increased friction & reduced damping effectiveness.



HEAVIER: A lighter shock could use cheaper, weaker materials that compromise performance & durability.



STRONGER: A thicker steel & larger pistons could handle heavier vehicles and provide high-performance applications.

SUPPORT: Premium quality is precisely engineered to ensure proper fit and minimize stress on the mount. Including additional bushings and reinforcements for better handling and noise reduction.



WORN SHOCK ABSORBER BEARING
INFERIOR QUALITY

NORMAL WORN SHOCK ABSORBER BEARING
PREMIUM QUALITY



WORN RUBBER TOP SHOCK ABSORBER
INFERIOR QUALITY

NORMAL WORN RUBBER TOP SHOCK ABSORBER
PREMIUM QUALITY

DURABLE, RELIABLE & DEPENDABLE

TEMCO high-quality shock absorbers offers a significant improvement in ride quality, handling, safety, and durability compared to inferior-quality options.

Safety risks of inferior shock absorber:

- Increased Stopping Distance.
- Reduced Handling.
- Hydroplaning Risk
- Loss of Vehicle Stability
- Potential for Bottoming Out



www.0086PARTS.com

Marketing@0086parts.com
Tel:0086-577-88802125
Fax:0086-577-88802126

EXPERTISE LEAD EXCELLENCE
Temco

WWW.0086PARTS.COM



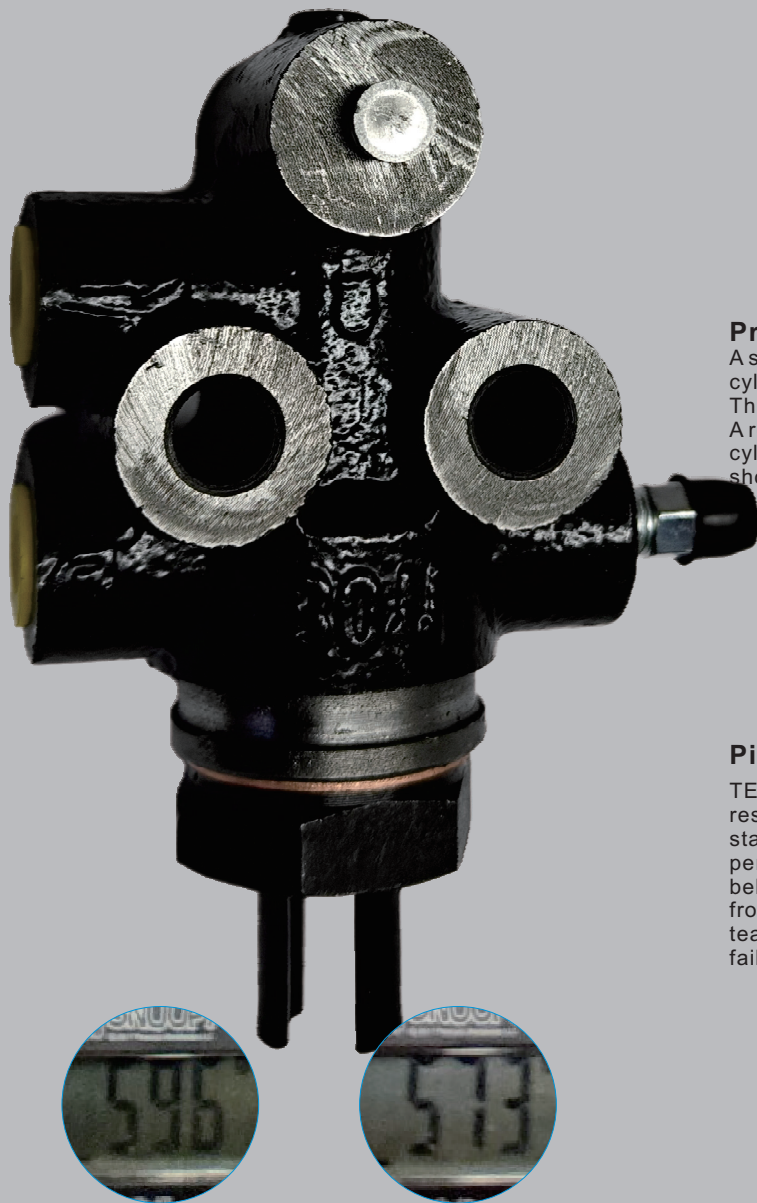
Small gain

BIG RISK!

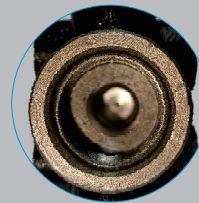
Inferior hydraulic parts not only hurts the vehicle but also the PASSENGER!

Marketing@0086parts.com
Tel:0086-577-88802125
Fax:0086-577-88802126

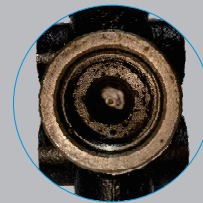
EXPERTISE LEAD EXCELLENCE
Temco



**TEMCO
Premium**



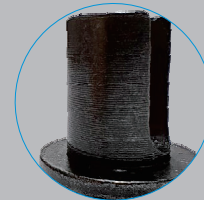
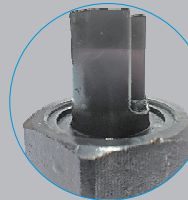
**Inferior
Quality**



Precise vs. Rough Cylinder Finishing:

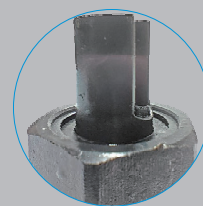
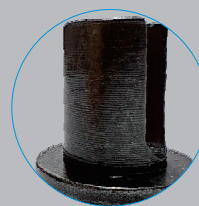
A smooth surface reduces friction between the piston rings and cylinder wall, leading to less wear and tear on both components. This extends cylinder life and reduces maintenance costs.

A rough surface creates friction between the piston rings and cylinder wall, leading to increased wear and tear on both. This shortens engine life and increases maintenance costs.



Pistons:

TEMCO wheel cylinder pistons are made from strong, wear-resistant cast iron with proper heat treatment for dimensional stability. It is essential for maintaining safe braking. Consistent performance and reliable sealing ensure predictable braking behavior in any situation. Pistons of inferior quality may be made from softer & weaker materials that are more prone to wear & tear. It compromises safety and might lead to potential leaks & failure



Cylinder Body:

TEMCO wheel cylinders are crafted from high-strength steel, expertly tempered for exceptional rigidity & resistance to bending under pressure. The surface finish is meticulously smoothed to reduce friction, promoting smooth operation & minimizing wear on the piston and seals. This maximizes braking efficiency and ensures long-lasting performance.

Rod:

TEMCO rod are made from high-strength steel or aluminum alloys with proper tempering for rigidity & resistance to bending. It ensures accurate dimensions and a perfect fit with the piston and wheel cylinder bore. The surface finish is smooth for minimal friction. Inferior quality are made from weaker material, which may bend or even break under pressure, especially during hard braking.



DURABLE, RELIABLE & DEPENDABLE

Safety risks of inferior hydraulic parts:

- Inferior raw material thinner & lighter.
- Very poor quality piston.
- Insufficient strength and stability.

Possible consequences:

- Reduced performance
- Safety Concerns
- Increased risk of failure
- Shorter Lifespan



www.0086PARTS.com

WWW.0086PARTS.COM



ULTRA PREMIUM HYDRAULIC

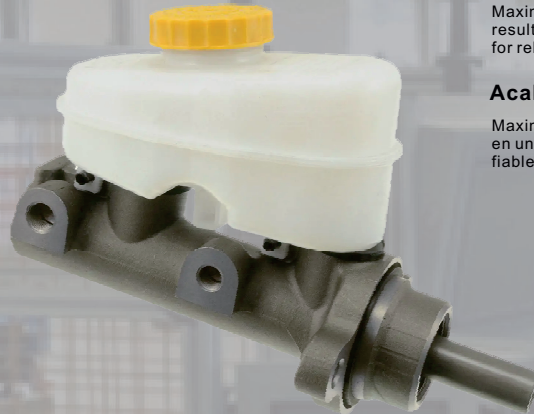
BRAKE MASTER CYLINDER CILINDRO MAESTRO DE FRENO

OEM style reservoir connection

Ensures a leak-free seal and prevents contamination

Conexión de depósito estilo OEM

Garantiza un sellado sin fugas y evita la contaminación



Ultra-smooth cylinder bore finish

Maximizes performance resulting in longer service life for reliable braking

Acabado ultra suave del orificio del cilindro

Maximiza el rendimiento, lo que se traduce en una vida útil más larga para un frenado fiable

Metales de calidad y componentes avanzados

Previene la reacción química que puede conducir a la corrosión y a la falla prematura

Quality metals and advanced components

Prevents chemical reaction that may lead to corrosion and early failure

BRAKE WHEEL CYLINDER CILINDRO DE RUEDA DE FRENO

Ethylene Propylene Rubber (EPDM)

Prevents leakage, offers superior resistance to heat and corrosion & ensures a longer service life

Caucho de etileno propileno (EPDM)

Evita fugas, ofrece una resistencia superior al calor y a la corrosión y garantiza una vida útil más larga



Anodizing applied cylinder bodies

Strengthens metal surfaces for smooth operation of the piston while resisting corrosion

Anodizado de cuerpos de cilindros aplicados

Fortalece las superficies metálicas para un funcionamiento suave del pistón mientras resiste la corrosión

Quick-response OEM design

Reacts quickly to driver's brake pedal input

Diseño OEM de respuesta rápida

Reacciona rápidamente a la entrada del pedal de freno del conductor.

BRAKE BOOSTER BOOSTER DE FRENO

Engineered to exact OE specification

Delivery ideal air pressure and smooth braking action

Diseñado según las especificaciones exactas de los equipos originales

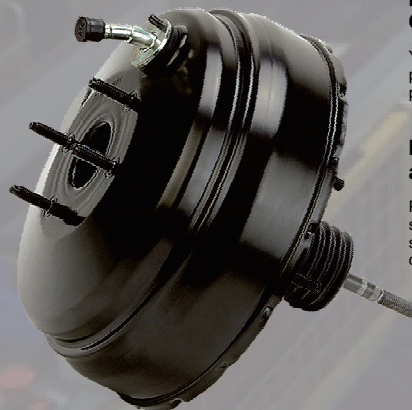
Entrega de una presión de aire ideal y una acción de frenado suave

Quicker response time & better brake fluid flow

Provides improved brake feel

Tiempo de respuesta más rápido y mejor flujo de líquido de frenos

Proporciona una mejor sensación de frenado



Manufactured with the highest quality OE materials and exacting tolerances

Yields maximum durability, precise pedal feel, safe vehicle operation and prevention of driver fatigue

Fabricado con materiales OE de la más alta calidad y tolerancias exactas

Proporciona la máxima durabilidad, una sensación precisa del pedal, un funcionamiento seguro del vehículo y la prevención de la fatiga del conductor

Marketing@0086parts.com
Tel:0086-577-88802125
Fax:0086-577-88802126

EXPERTISE LEAD EXCELLENCE
Temco

WWW.0086PARTS.COM



www.0086PARTS.com

DURABLE, RELIABLE & DEPENDABLE

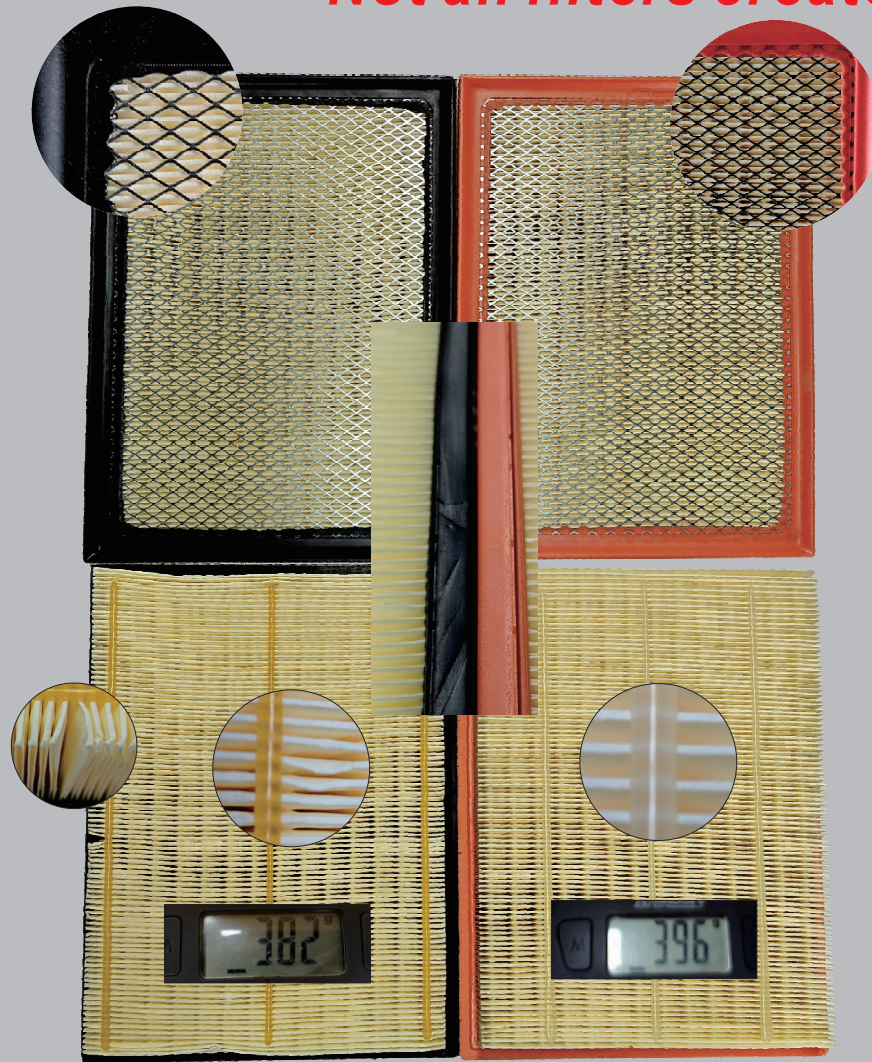
TEMCO brake master cylinders, brake wheel cylinders and brake boosters are designed and tested to meet OE requirements for durability and reliability under extreme conditions. They provide superior brake experience. These hydraulic parts ensure consistent & smooth braking experience under extreme conditions and features highest grade raw material which protects against corrosion



Small gain

BIG RISK!

Not all filters created equal!



FILTRATION EFFICIENCY

TEMCO High-Quality Filters effectively trap dirt, dust and other debris, preventing them from entering the engine. They provide maximum filtration and help maintain engine health. Inferior-Quality Filters may have subpar filtration capabilities, allowing more contaminants to pass through. As a result, they can compromise engine performance and longevity

MATERIAL AND DESIGN.

TEMCO High-Quality Filters are typically made of oiled cotton or other advanced filtration paper that are designed for durability and efficiency. Our extensive experience in crafting such filters Inferior-Quality Filters are constructed from basic paper material, that degrade faster and offer less filtration efficiency.

LONGEVITY:

TEMCO High-Quality Filters can last a long time with proper maintenance, these filters. Inferior-Quality Filters may need more frequent replacements due to their limited capacity to hold debris

AIRFLOW

TEMCO High-quality Filters are designed to allow sufficient airflow while maintaining good filtration. This ensures the engine gets the proper amount of oxygen for optimal performance. Inferior-Quality Filters may restrict airflow too much, reducing engine power and fuel efficiency.



DURABLE, RELIABLE & DEPENDABLE

TEMCO High-quality: Protects your engine, improves performance and fuel efficiency, and provides a cleaner, healthier cabin environment. Safety risks of inferior air filters include:

- **Reduced Filtration Efficiency:** Inferior filters may not effectively trap dirt, dust, and other contaminants. These particles can lead to potential damage and decreased performance
- **Shorter Lifespan:** Inferior-quality filters may require more frequent replacements, adding to costs.
- **Engine Wear and Tear:** Inferior filters can allow unfiltered air to reach the engine and lead to increased wear and tear, affecting the longevity of critical engine components
- **Risk of Equipment Failure:** Inferior ones can contaminate components, clog oil filters, & lead to temperature control valve failure. Hi-tem operation increases the risk of equipment breakdown.

www.0086PARTS.com



Marketing@0086parts.com
Tel:0086-577-88802125
Fax:0086-577-88802126

EXPERTISE LEAD EXCELLENCE
Temco

WWW.0086PARTS.COM

Marketing@0086parts.com
Tel:0086-577-88802125
Fax:0086-577-88802126

EXPERTISE LEAD EXCELLENCE
Temco



RAW MATERIAL

TEMCO discs use high-grade special grey cast iron in accordance with EN-GJL200 grade the GG20 European standard and G3000 American standard

 Drums braking surface runout $\leq 0.05\text{mm}$

 Discs braking surface runout $\leq 0.03\text{mm}$

 Dynamic balance $\leq 80\text{g.cm}$

 E-coating provides excellent corrosion protection
(Selected applications only)

 Covers over 90% of vehicles on the road today



www.0086PARTS.com

Flatness & Parallelism

A precision control of the parallelism of friction surface allows to reduce the vibrations, guaranteeing a high level of comfort during braking, and shorter stopping distance



WWW.0086PARTS.COM

 AUTONOVA
PERFORMANCE AUTO PARTS

 EISSLER
AUTO PARTS

 FLOOSER
AUTO PARTS

 okayama
AUTOMOBILE
SPARE PARTS

 kasu

 NEXGINE
Quality • Service • Dependability

 MOTOLAB

 blitz

 MASTER
BRAKE

 TOSHIO

 M

 VELDING
Premium Quality Auto Parts



WIRE HARNESS
 MAZO DE CABLES



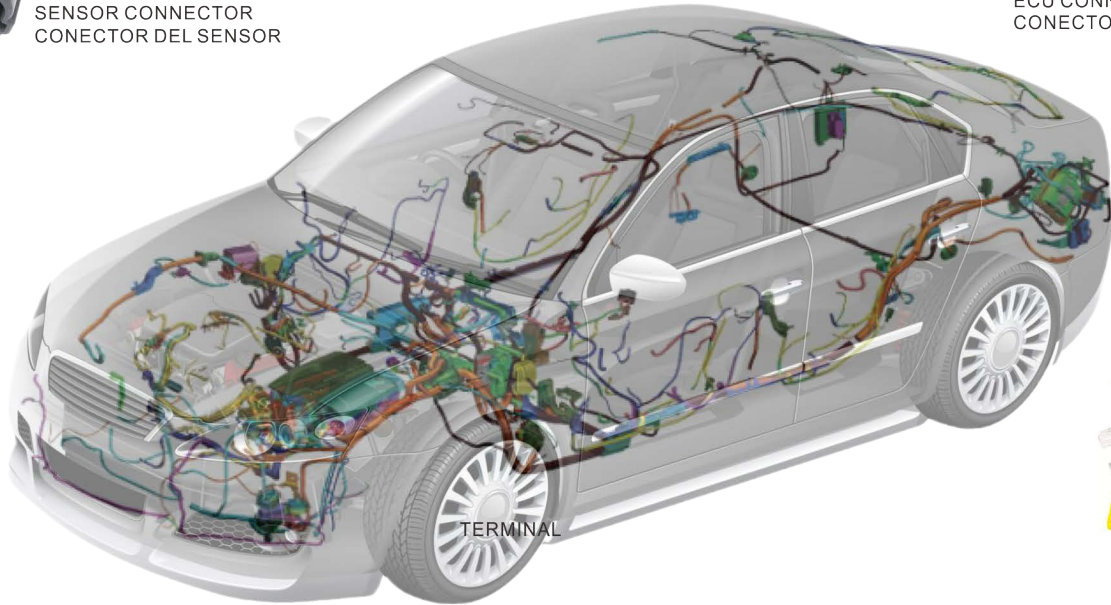
FUEL INJECTOR WIRE
 ALAMBRE DEL INYECTOR
 DE COMBUSTIBLE



SENSOR CONNECTOR
 CONECTOR DEL SENSOR



ECU CONNECTOR
 CONECTOR DEL SENSOR



TERMINAL



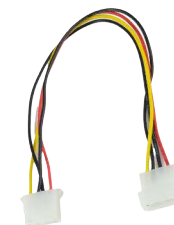
FUSE
 FUSIBLE



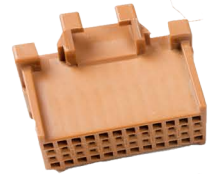
TERMINAL
 TERMINAL DE CABLE



LAMP SOCKET
 CASQUILLO DE LÁMPARA



POWER CONNECTOR
 CONECTOR DE ALIMENTACIÓN



BCM CONNECTOR
 CONECTOR BCM

Resistant to heat, oil, fatigue, aging and friction
 Resistente a la calor, al aceite, a la fatiga, al envejecimiento y a la fricción

High grade raw material enhance durability and length stability
 La materia prima de alta calidad mejora la durabilidad y la estabilidad de la longitud

OE fit, form & function deliver large power & high speed
 El ajuste, la forma y la función del equipo original ofrecen una gran potencia y alta velocidad

Excellent durability and flexibility in using
 Excelente durabilidad y flexibilidad de uso



www.0086PARTS.com

Minimize shorting occurrence
Minimice la ocurrencia de cortocircuitos

